

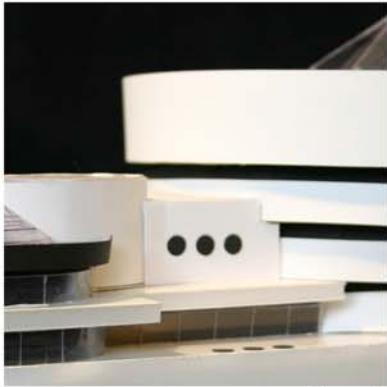


Eric M Wall

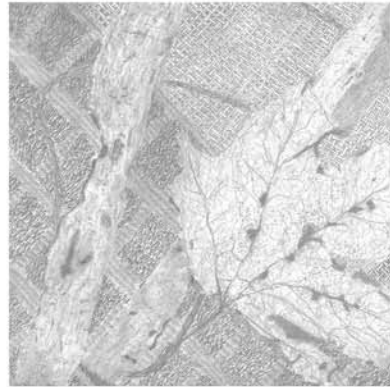
Creative Works

2008 - 2009

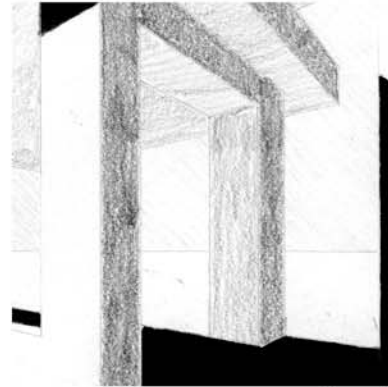
Table of Contents



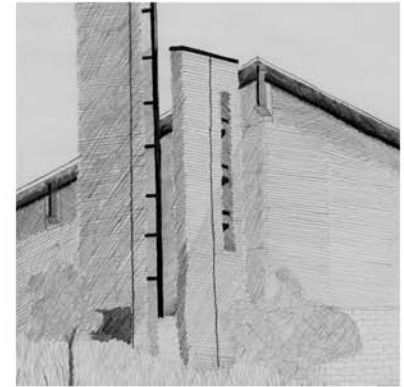
1 - 2



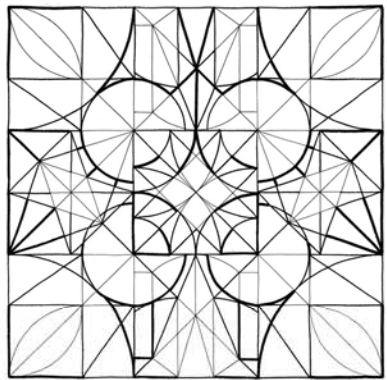
3 - 4



5 - 6



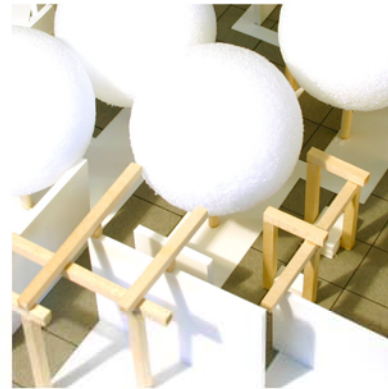
7 - 8



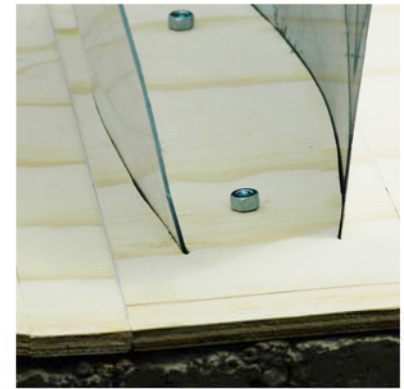
9 - 10



11 - 12



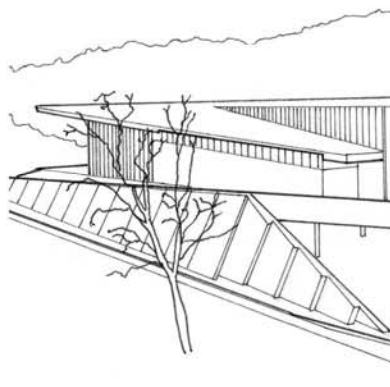
13 - 14



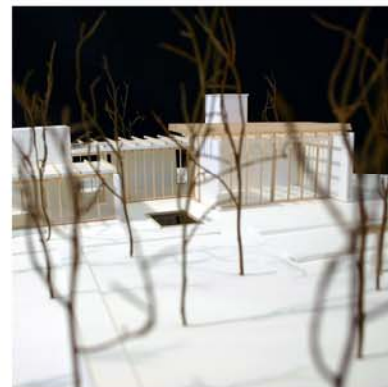
15 - 16



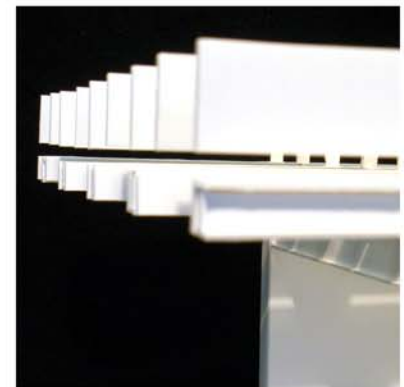
17 - 18



19 - 20



21 - 24



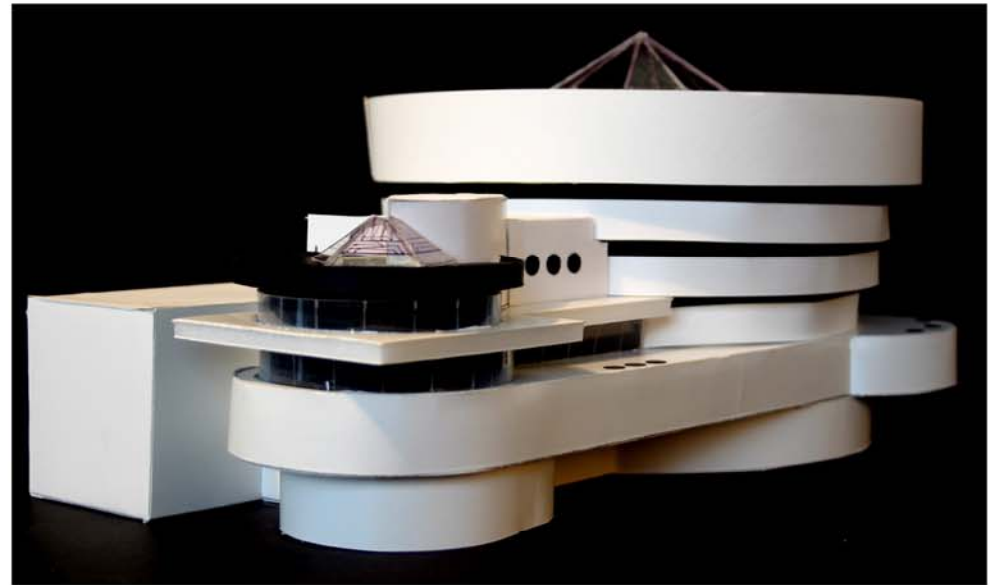
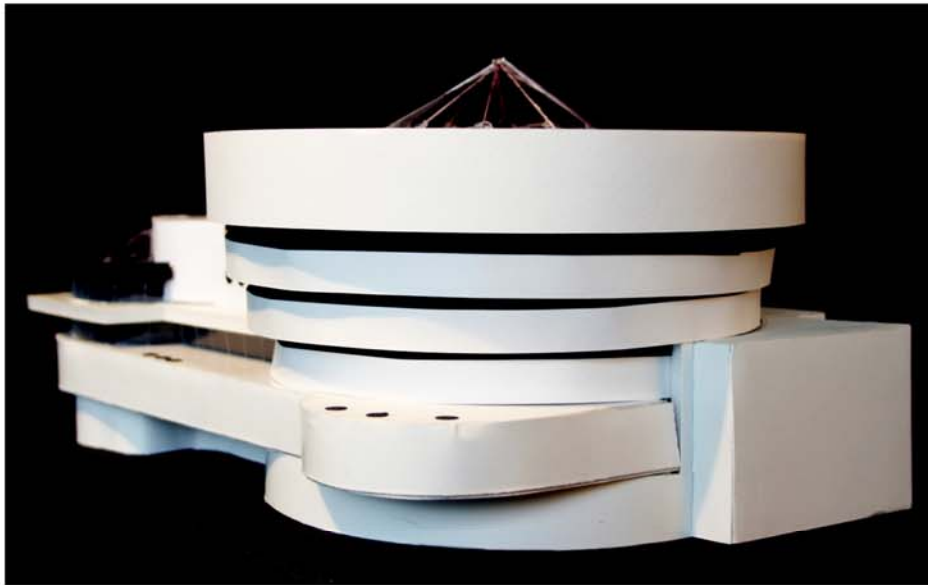
25 - 28

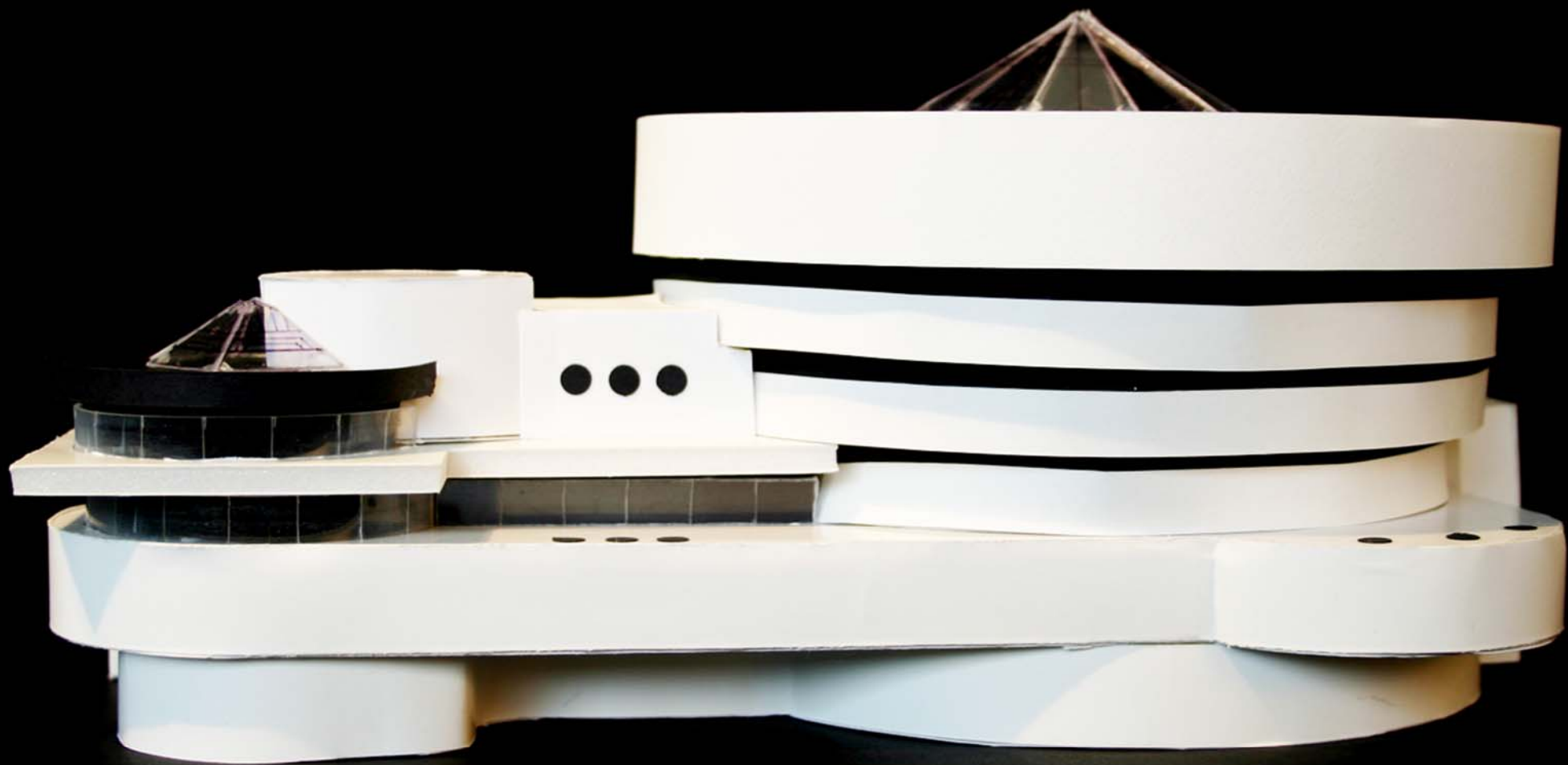
Guggenheim Museum

Arch. 1100, Fall 2008

Assignment: Make a scale model of an assigned building.

Solution: I was assigned Frank Lloyd Wright's Guggenheim Museum in New York City. This is my first model.





Textures

Arch. 1121, Fall 2008

Assignment: Create a collage of materials with a similar theme. Then, draw a detailed sketch of the collage.

Solution: I went with a natural theme, using burlap, bark, a leaf, and a cotton rag. I then sketched the collage using a variety of drawing pencils.

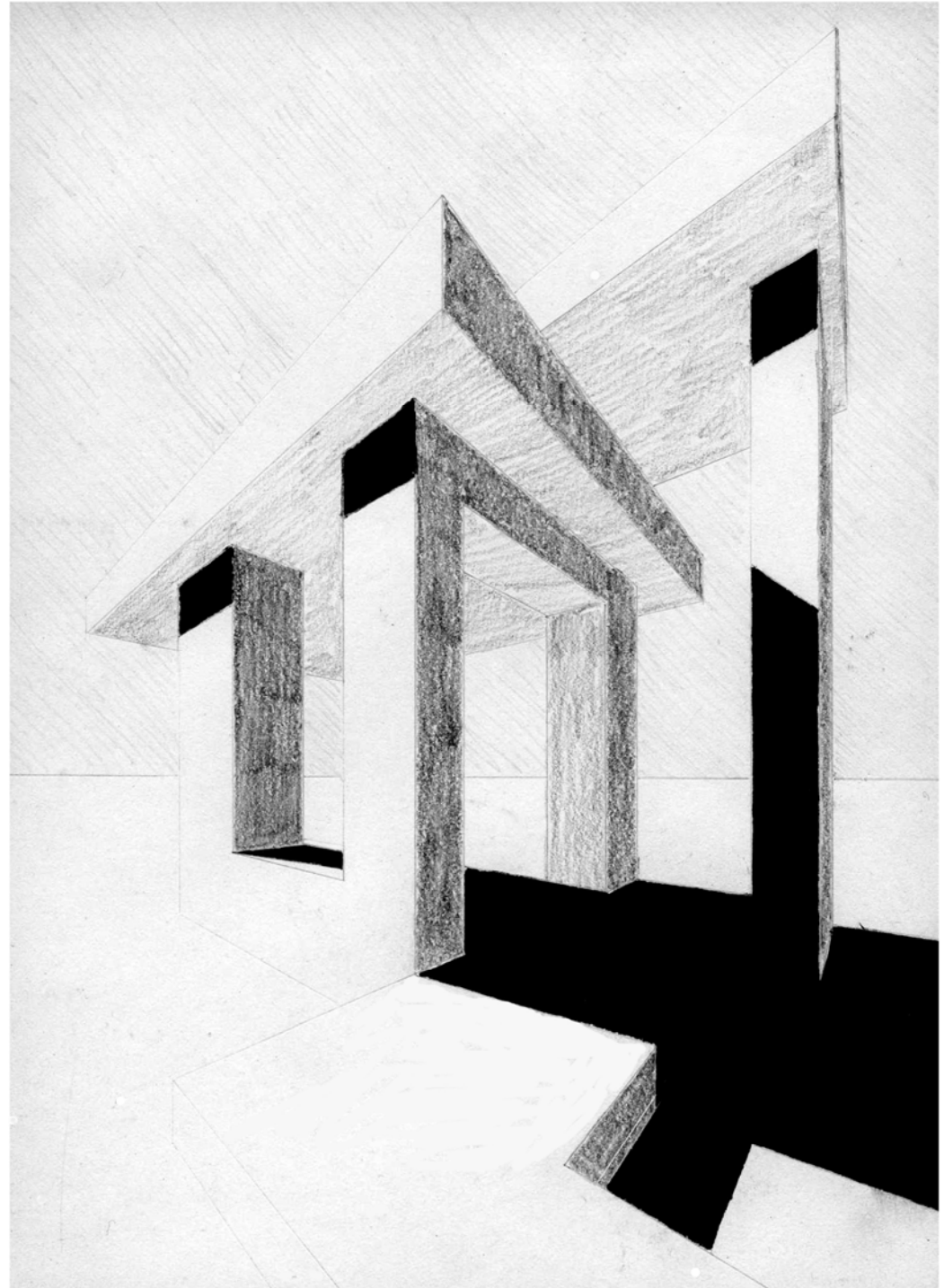
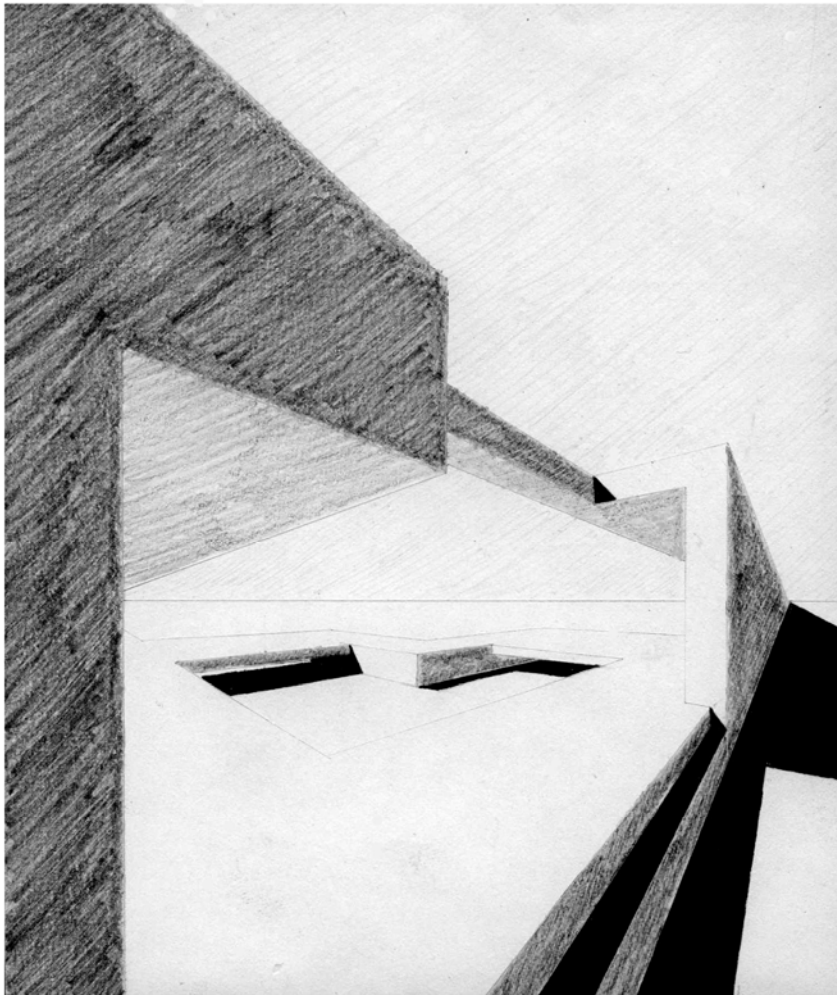


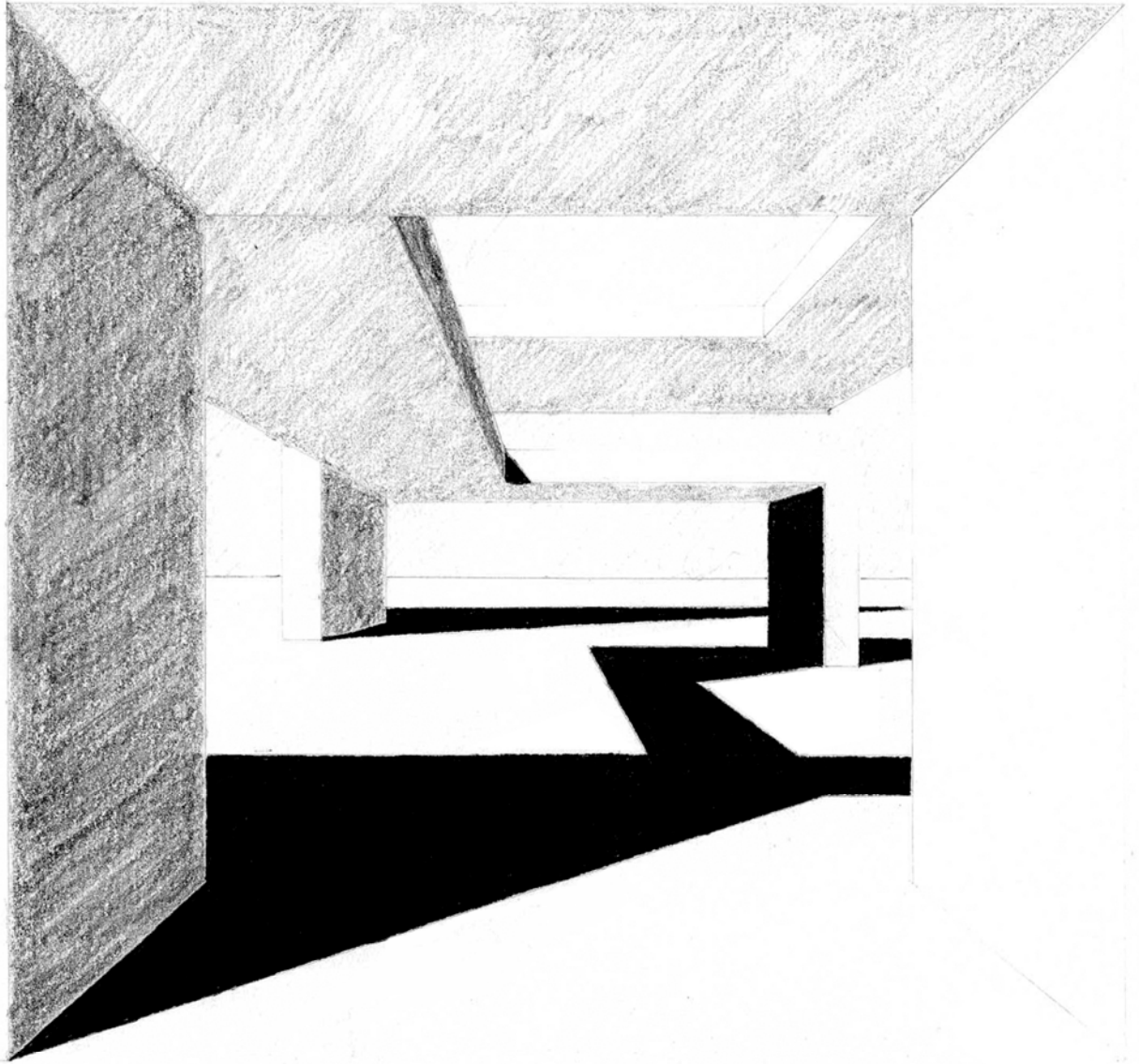
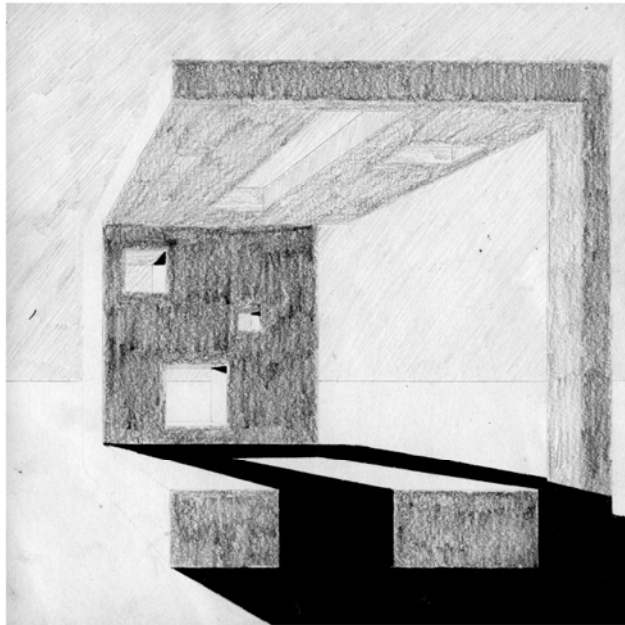
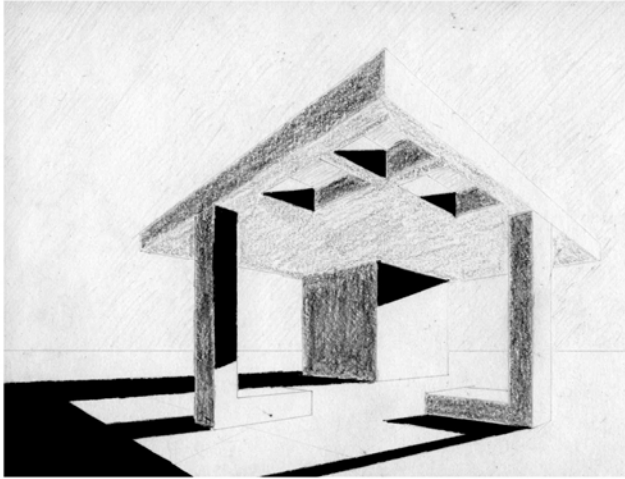


Perspective Journey

Arch. 1121, Fall 2008

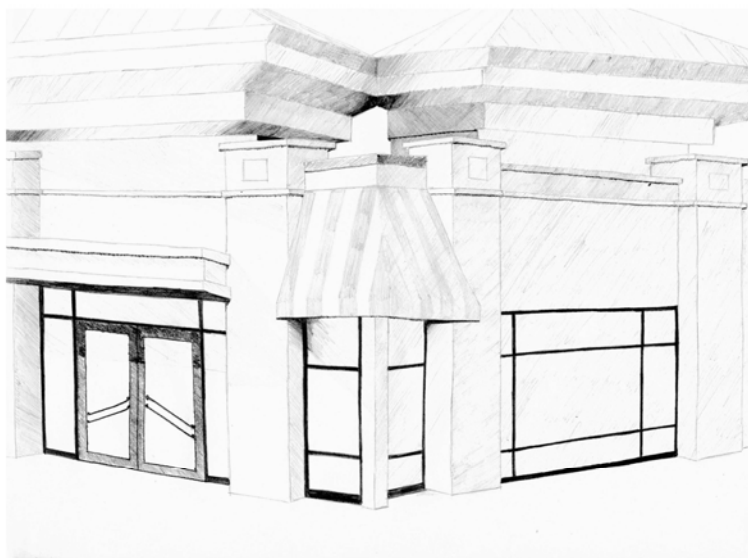
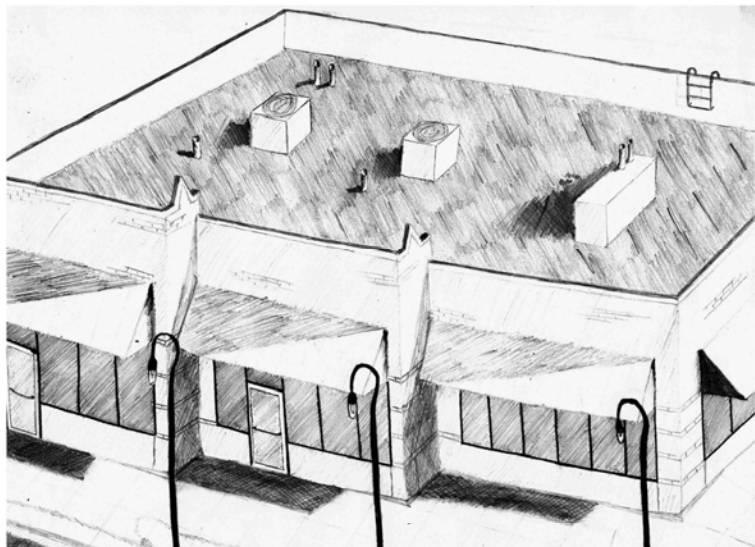
Assignment: Use one-point and two-point perspective techniques to create interesting architectural spaces.

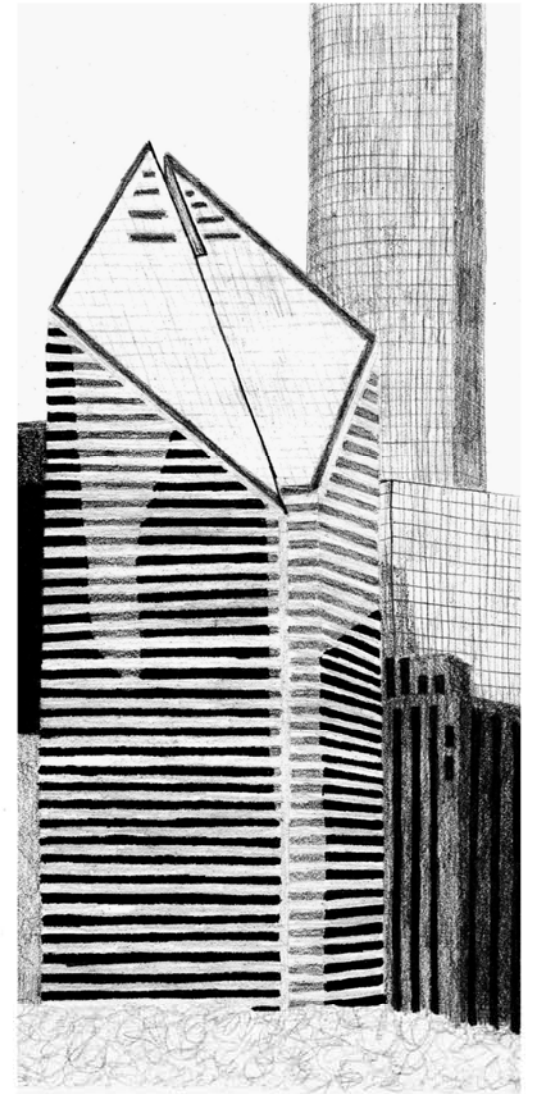




Sketches

Various sketches from different classes.



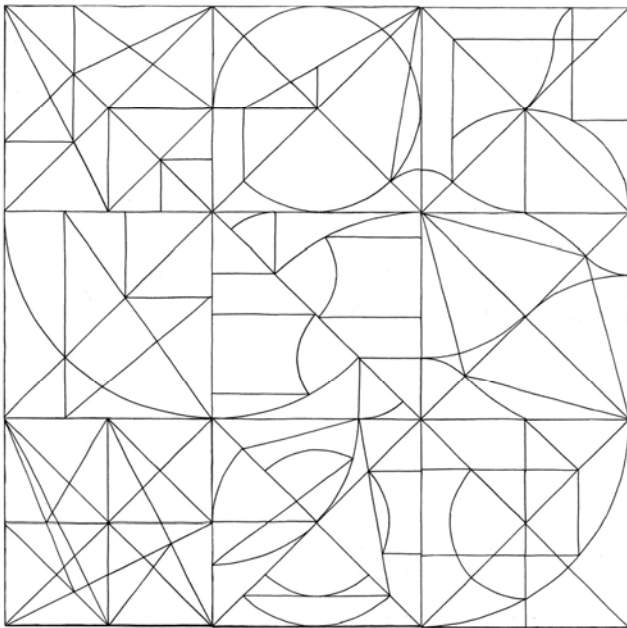


Assemblage and Hierarchy

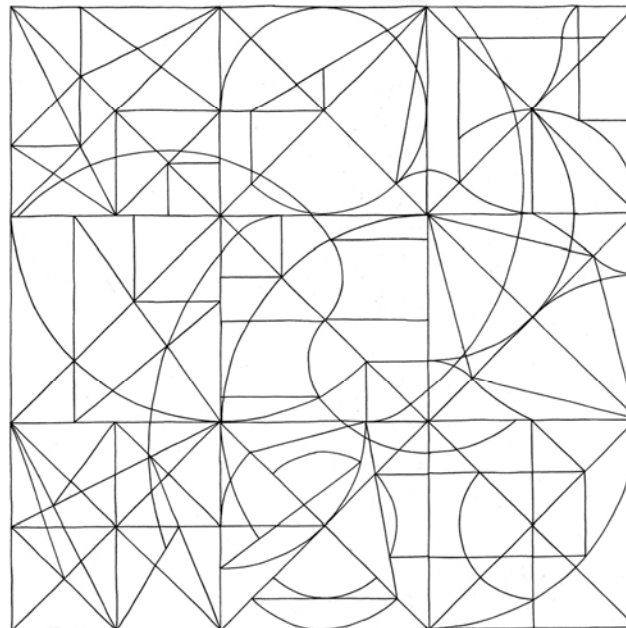
Arch. 1131, Spring 2009

Assignment: Create different 3" square asymmetrical and symmetrical designs. Then compose these smaller squares into two 9" square collages, one asymmetrical and one symmetrical. After this, add lines to the collage that work to make it into a more cohesive composition. Finally, add lineweights to the composition to add depth to the design. All drawings should be drafted in pencil, and then freehand inked.

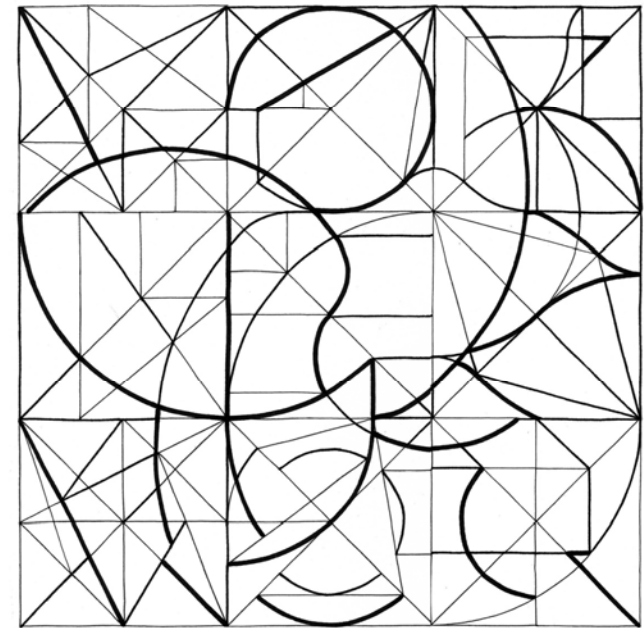
Asymmetrical



Collage

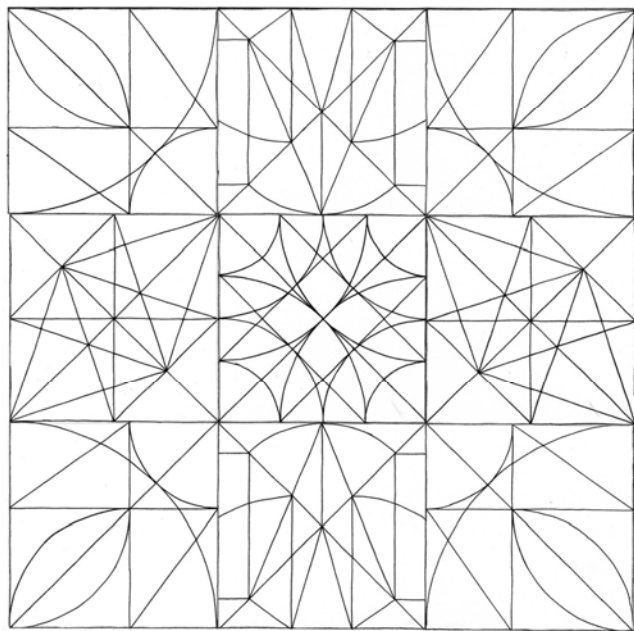


Added Lines

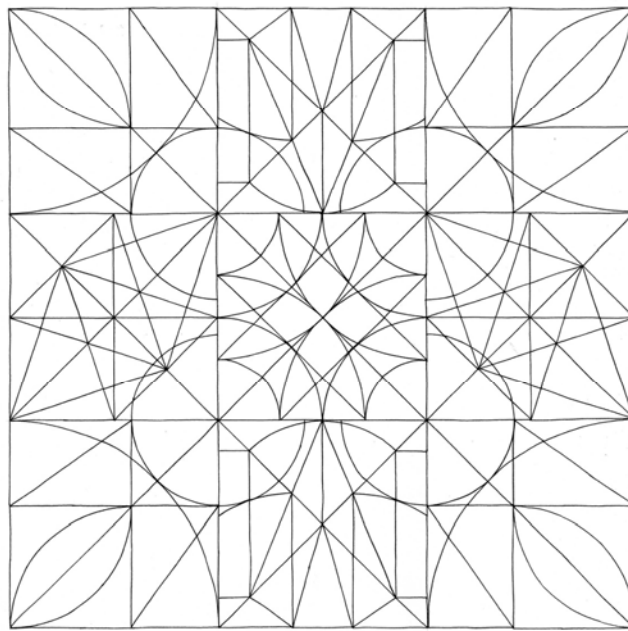


Lineweights

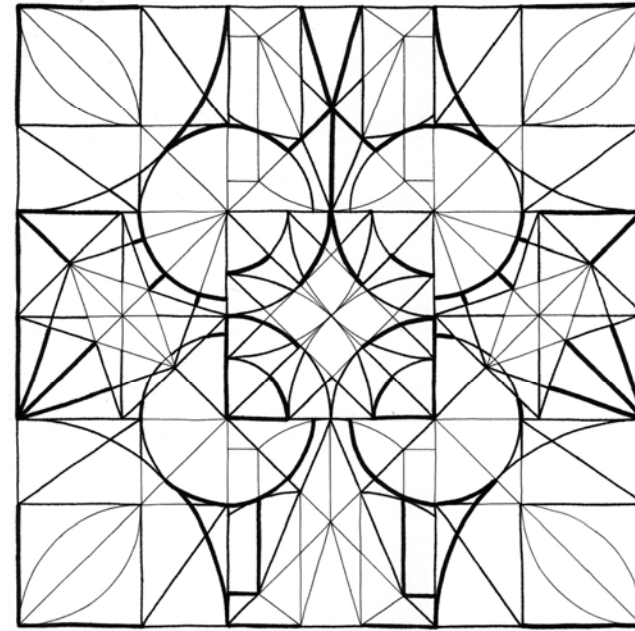
Symmetrical



Collage



Added Lines



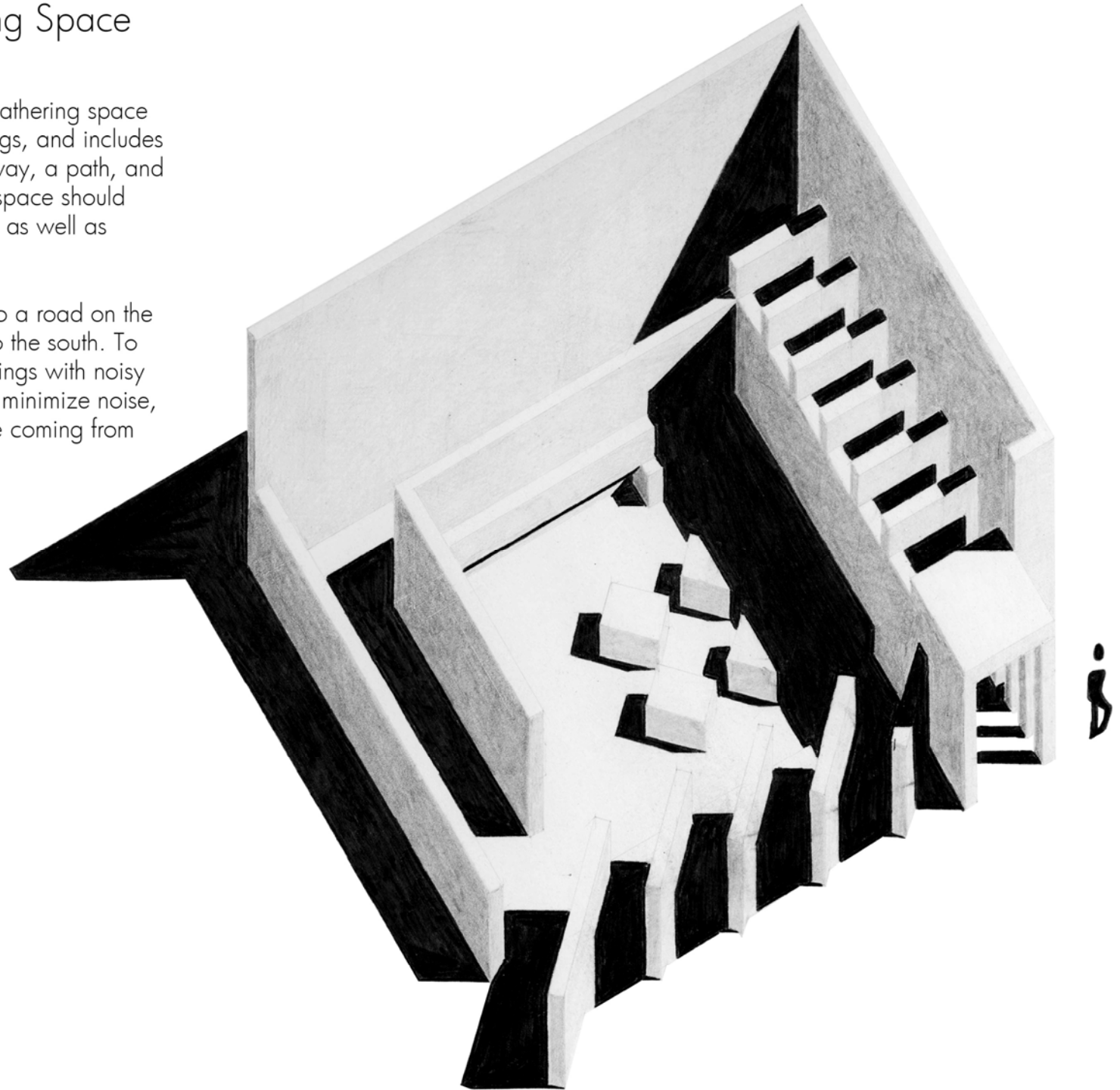
Lineweights

Community Gathering Space

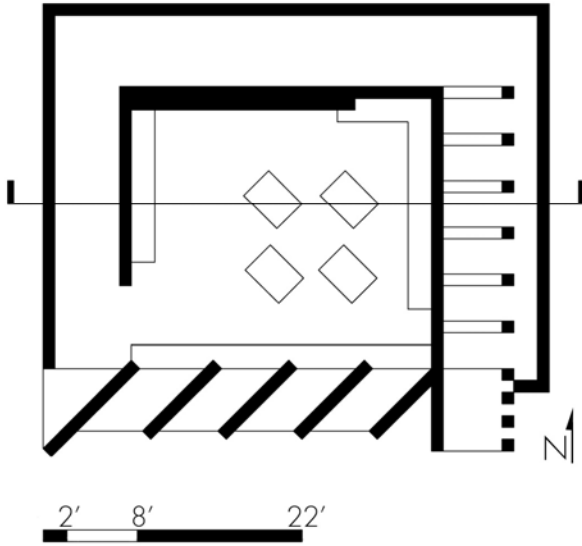
Arch. 1131, Spring 2009

Assignment: Create a public gathering space that responds to the surroundings, and includes three main elements: an entryway, a path, and a main gathering space. This space should accommodate groups of people as well as individuals.

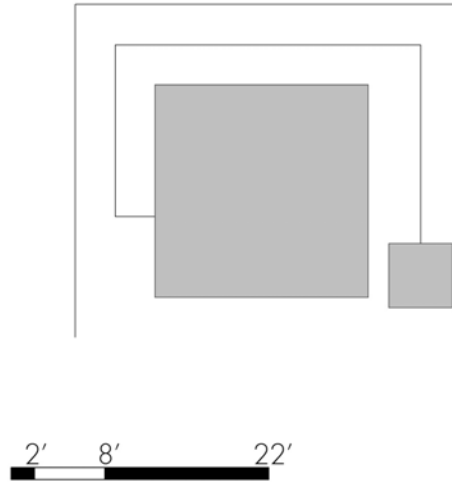
Solution: This site is adjacent to a road on the East side, and an open field to the south. To the north, there lies older buildings with noisy machinery outside of them. To minimize noise, I built high walls to block noise coming from the north and the east.



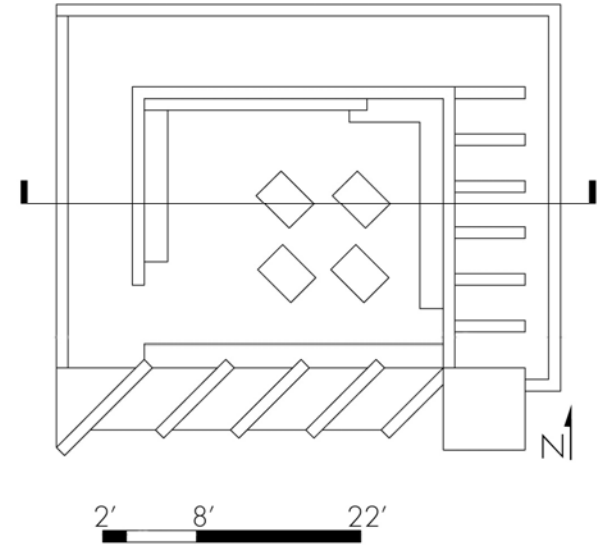
Floorplan



Parti



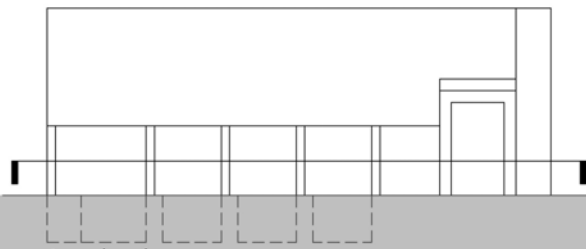
Roofplan



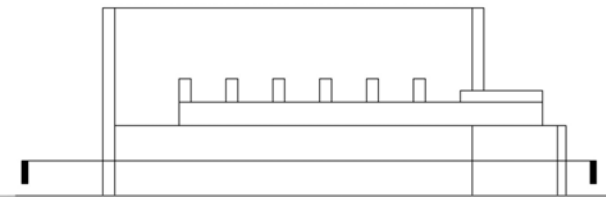
Section A



South Elevation



West Elevation



Spatial Sequence

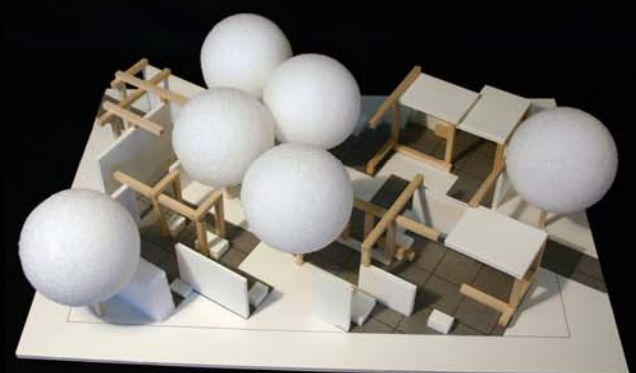
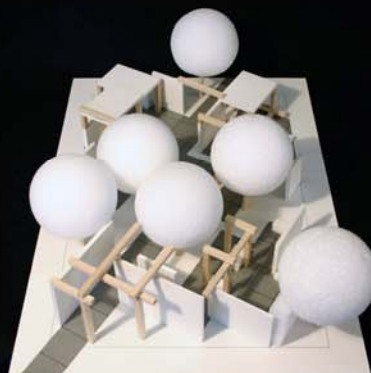
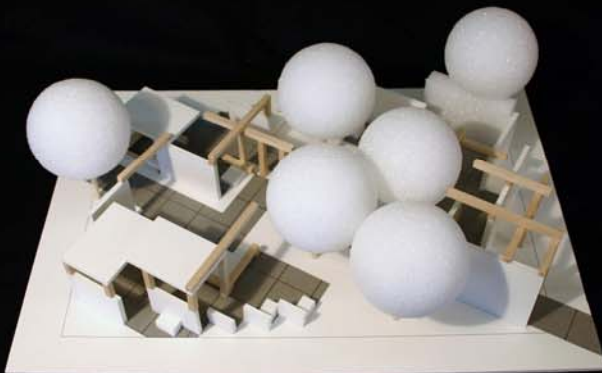
Architecture 1131, Spring 2008

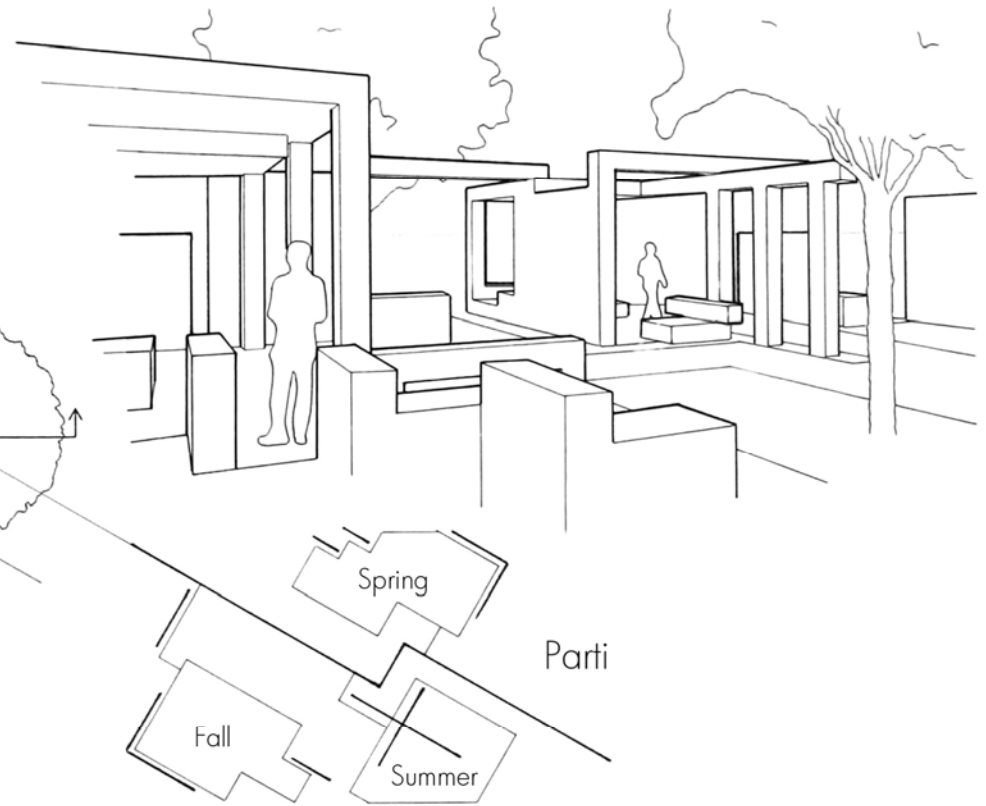
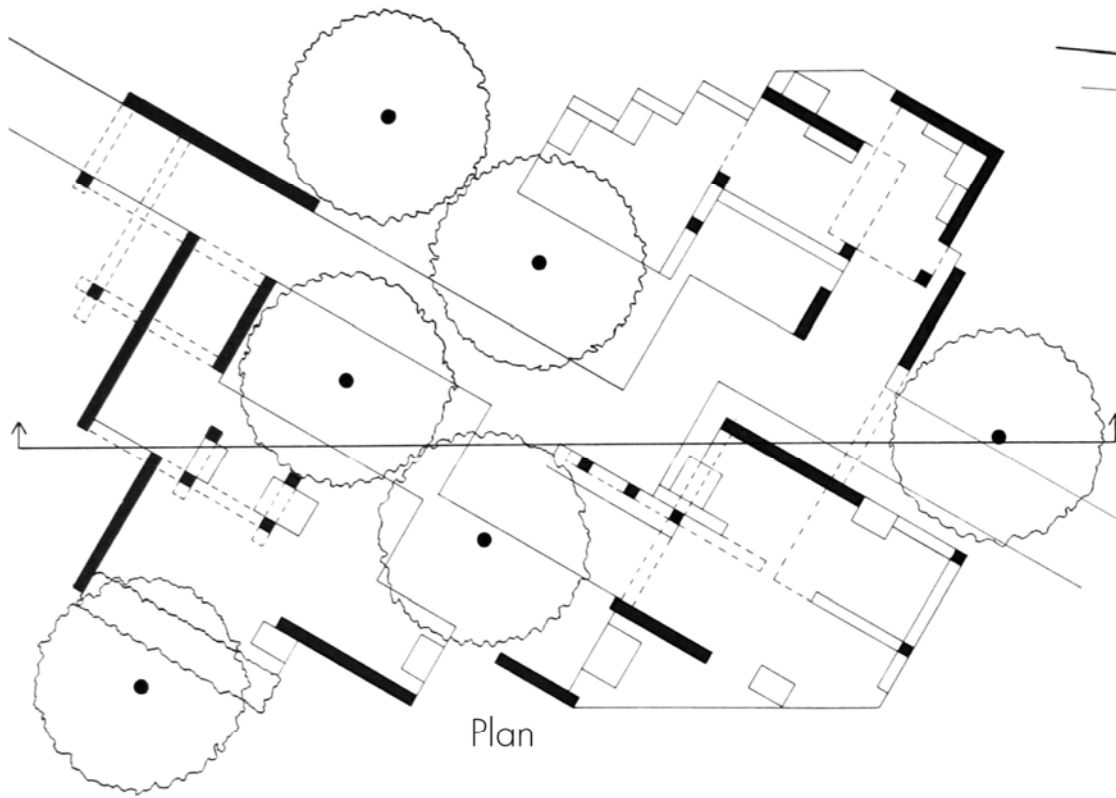
Assignment: Using a proportional kit of parts, create three outdoor spaces. Each outdoor space should be specifically designed for either spring, summer or fall, taking into account solar angles, wind, seasonal temperatures, and rainfall.

Solution: For this design, I was inspired by a quote by Frank Lloyd Wright, "freedom is from within". My intent was to have visitors approach what seems like a enclosed space with high walls. Once visitors enter the space however, the pathway opens up to a large open, airy space. To organize my design, I used a 30/60 degree grid that organizes pathways and the architectural elements.



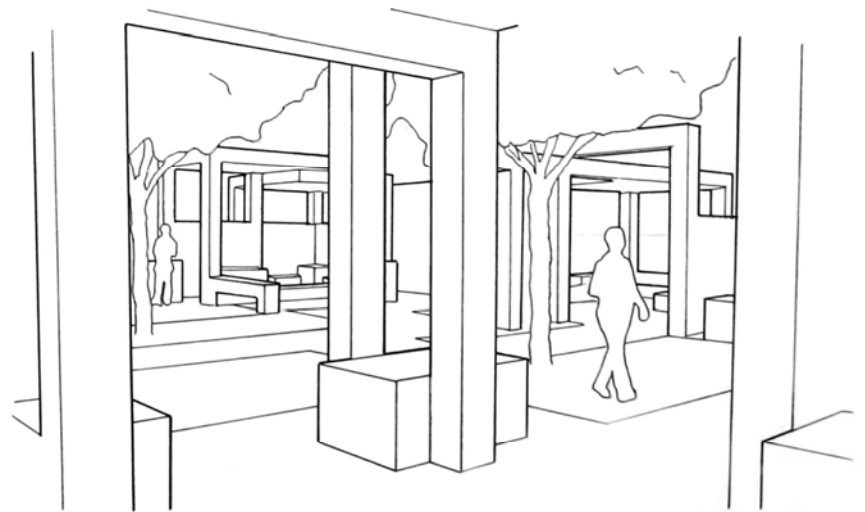
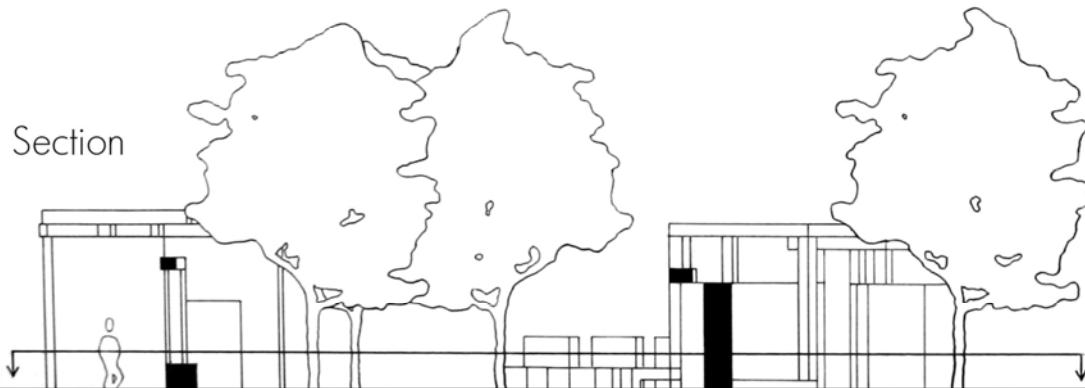
Hand render of summer space.





"freedom is from within"

-Frank Lloyd Wright



Nature of Materials

Arch 1131, Spring 2009

Assignment: Create a sculpture using concrete, metal, wood, and plexiglass that explores the ideas of an architect and a specific work of theirs.

Solution: For this project, I studied Oscar Niemeyer's Church of St. Francis De Assisi in Pampulha, Brazil. Niemeyer was greatly influenced by the natural landscape of Brazil, and the plasticity of concrete.

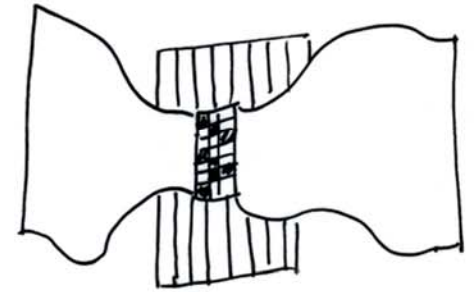
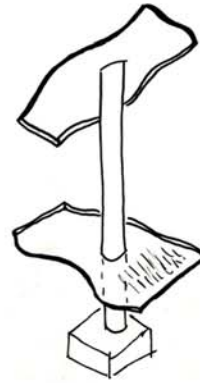
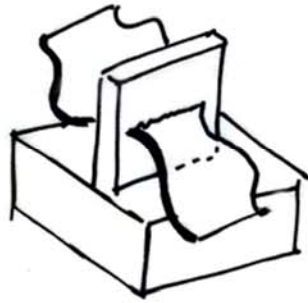
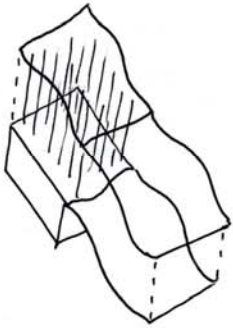
SKY AND CLOUDS plexiglass

MOUNTAINS birchwood

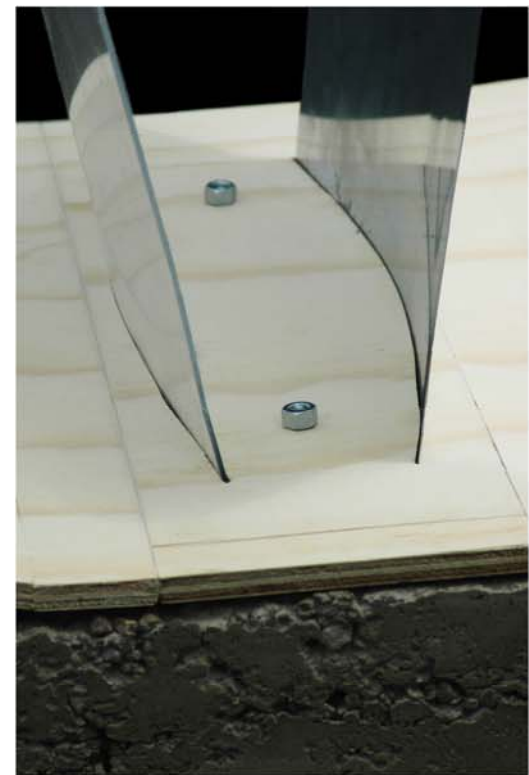
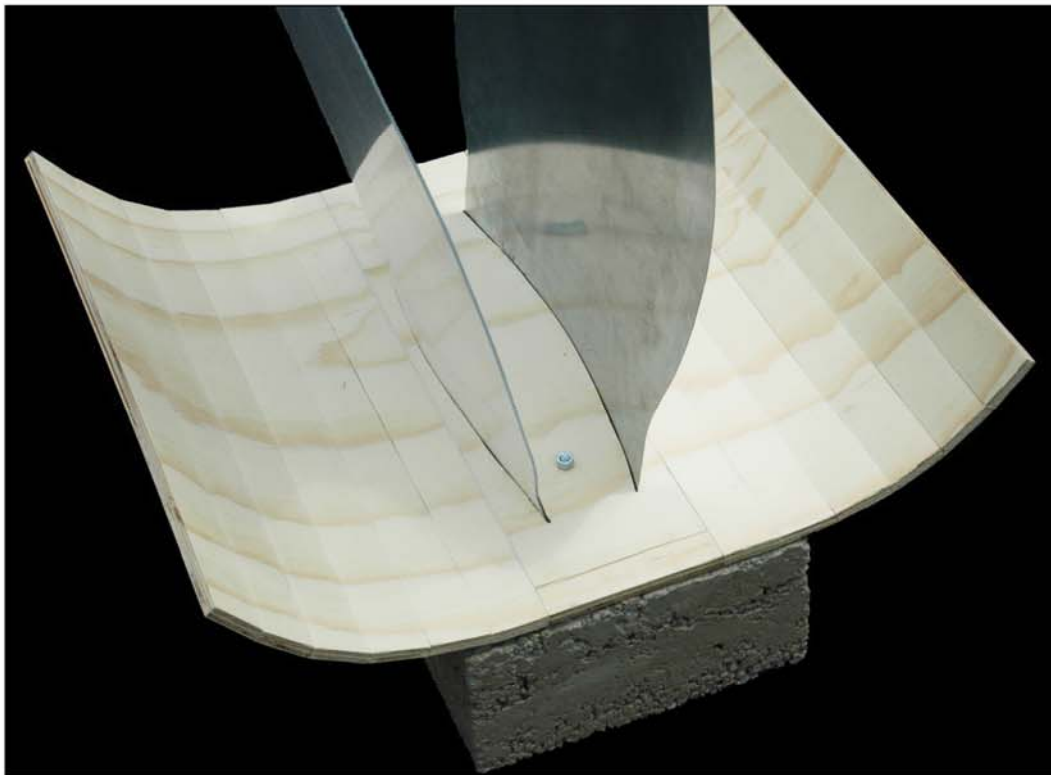
COASTLINE AND WAVES aluminum

PLASTICITY concrete





Process sketches exploring ideas of how to communicate Niemeyer's concept of merging sky and ocean.

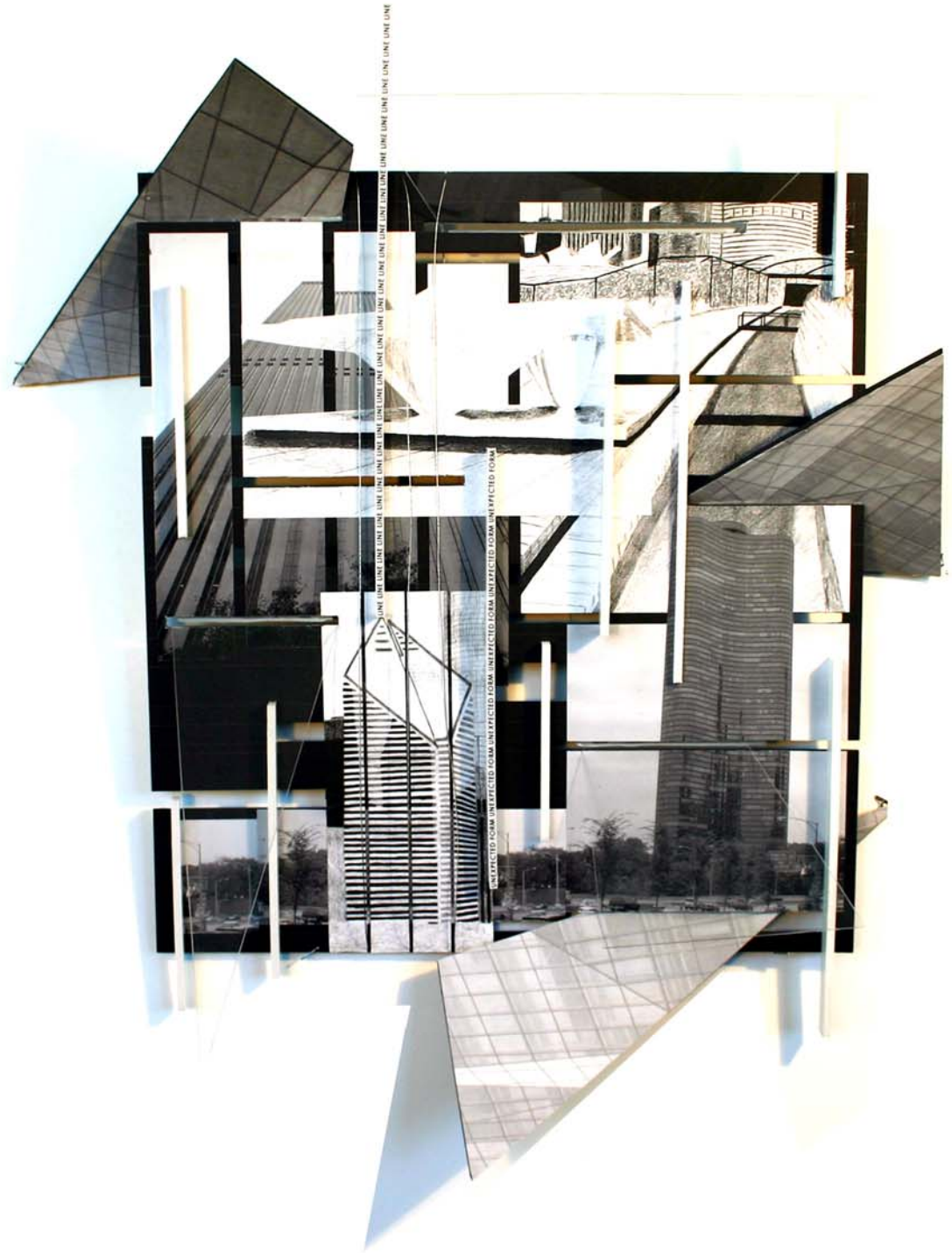


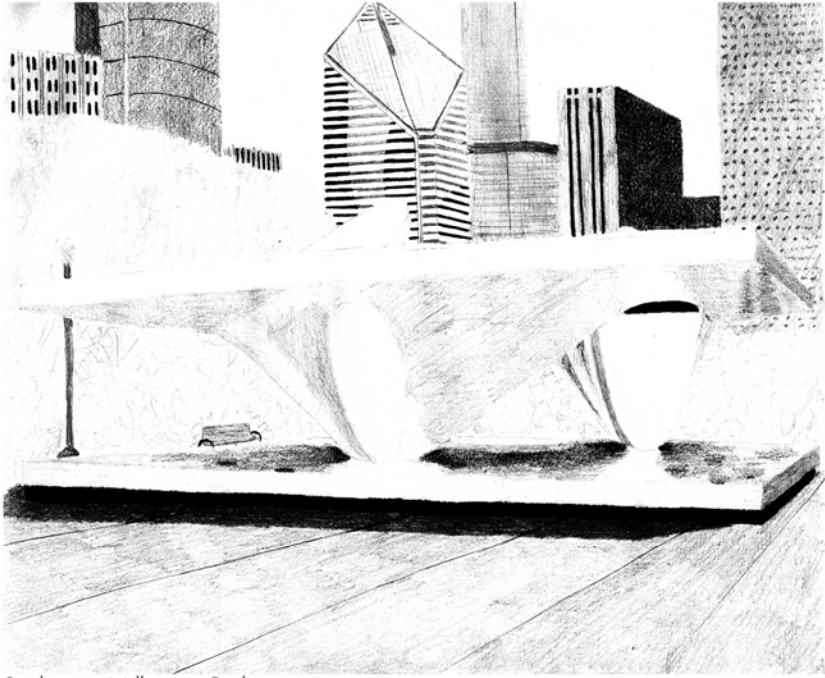
Inspirations Collage

Arch. 2201, Fall 2009

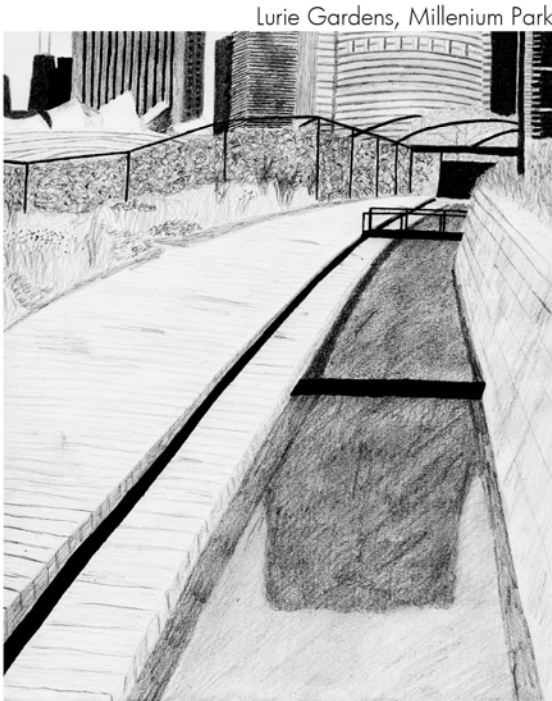
Assignment: Explore the city of Chicago, and take photos/sketches of architectural works that you find inspiring or pleasing. From here, create a three-dimensional collage using these photos, sketches, and text.

Solution: While exploring downtown Chicago, I found myself drawn to buildings like the Aon Center and the Smurfit Stone building that used datum and line as organizing elements. I was also inspired by buildings such as Lake Point Tower, and the Spertus Institute of Jewish Studies, which can be considered unexpected forms. From here, I used my sketches and photographs to create a collage that communicates these ideas.





Sculpture, Millenium Park



Lurie Gardens, Millenium Park



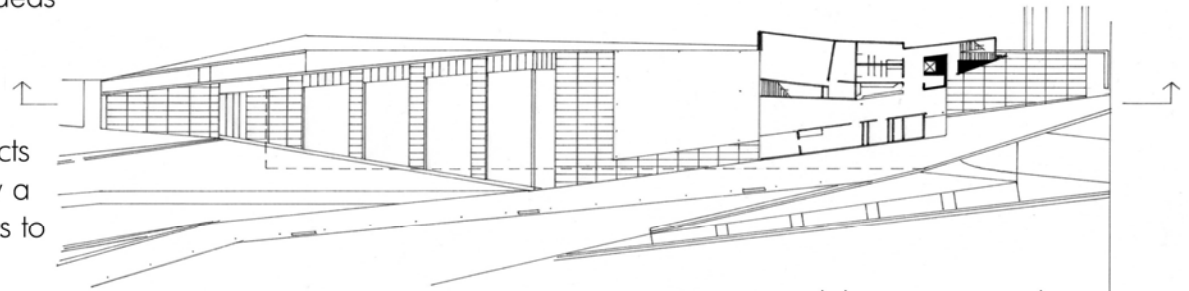
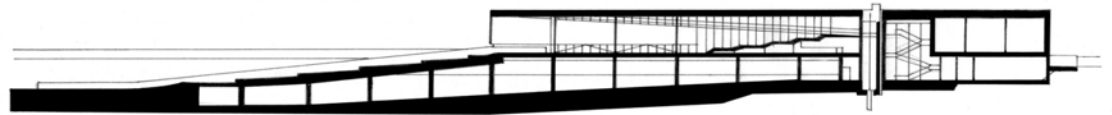
Precedent Study

Arch. 2201, Fall 2009

Assignment: Research and analyze an assigned architect and one of their works. Use hand drafted sections, elevations, plans, and other drawings necessary to communicate their ideas and concepts.

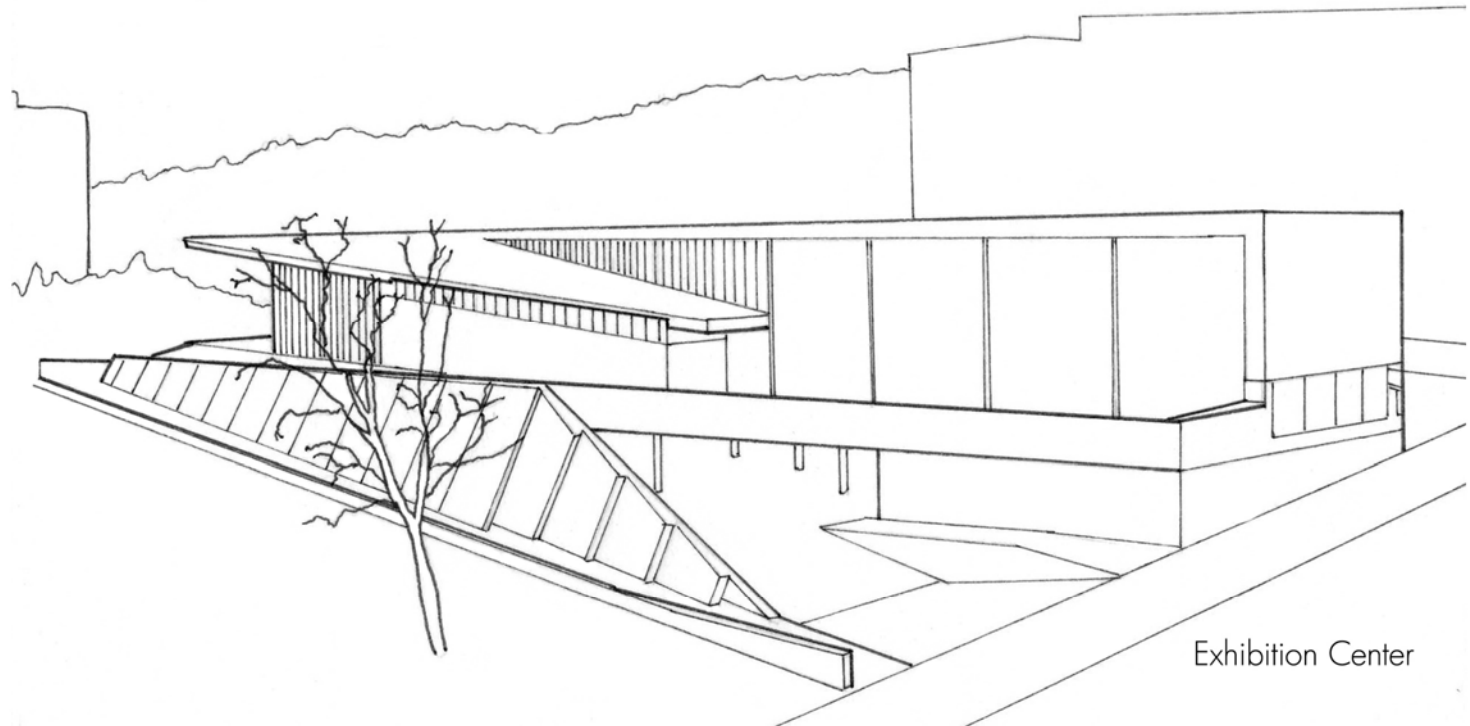
Solution: I was assigned the Olympic Sculpture Park in Seattle, Washington, designed by Weiss-Manfredi Architects in 2007. The site itself is unique because it is separated by a major road and railroad tracks. The idea of the design was to connect the three plots of land into a seamless park.

Weiss-Manfredi's design successfully accomplishes this by sculpting the land itself, which creates a unique space that re-connects Seattle to the Puget Sound.



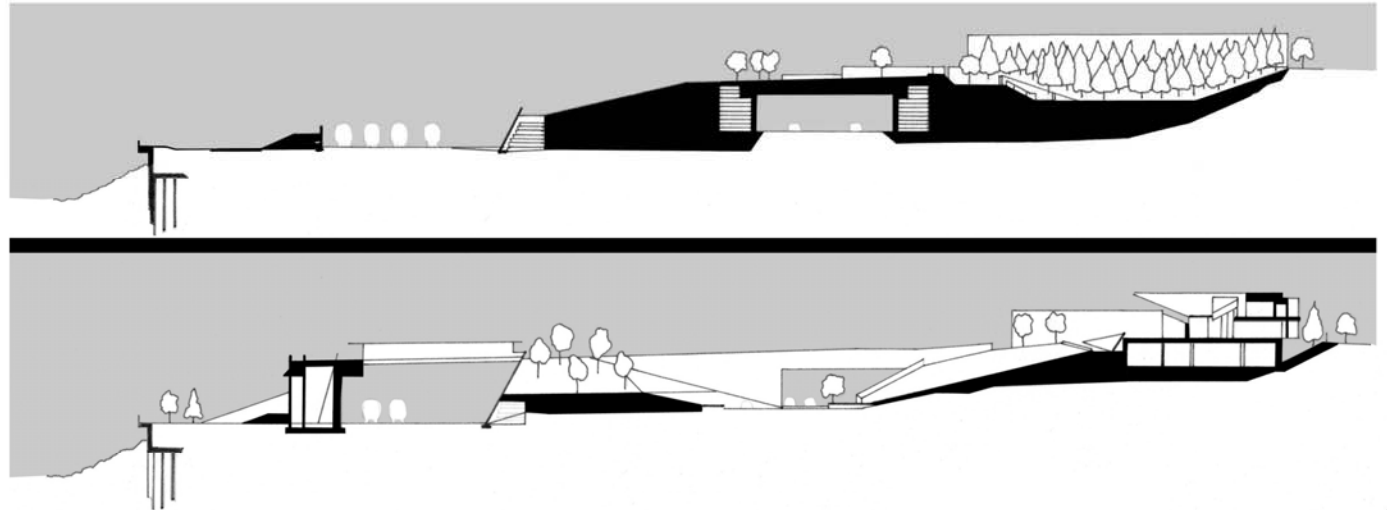
Exhibition Center Plan

Weiss-Manfredi's concept diagram

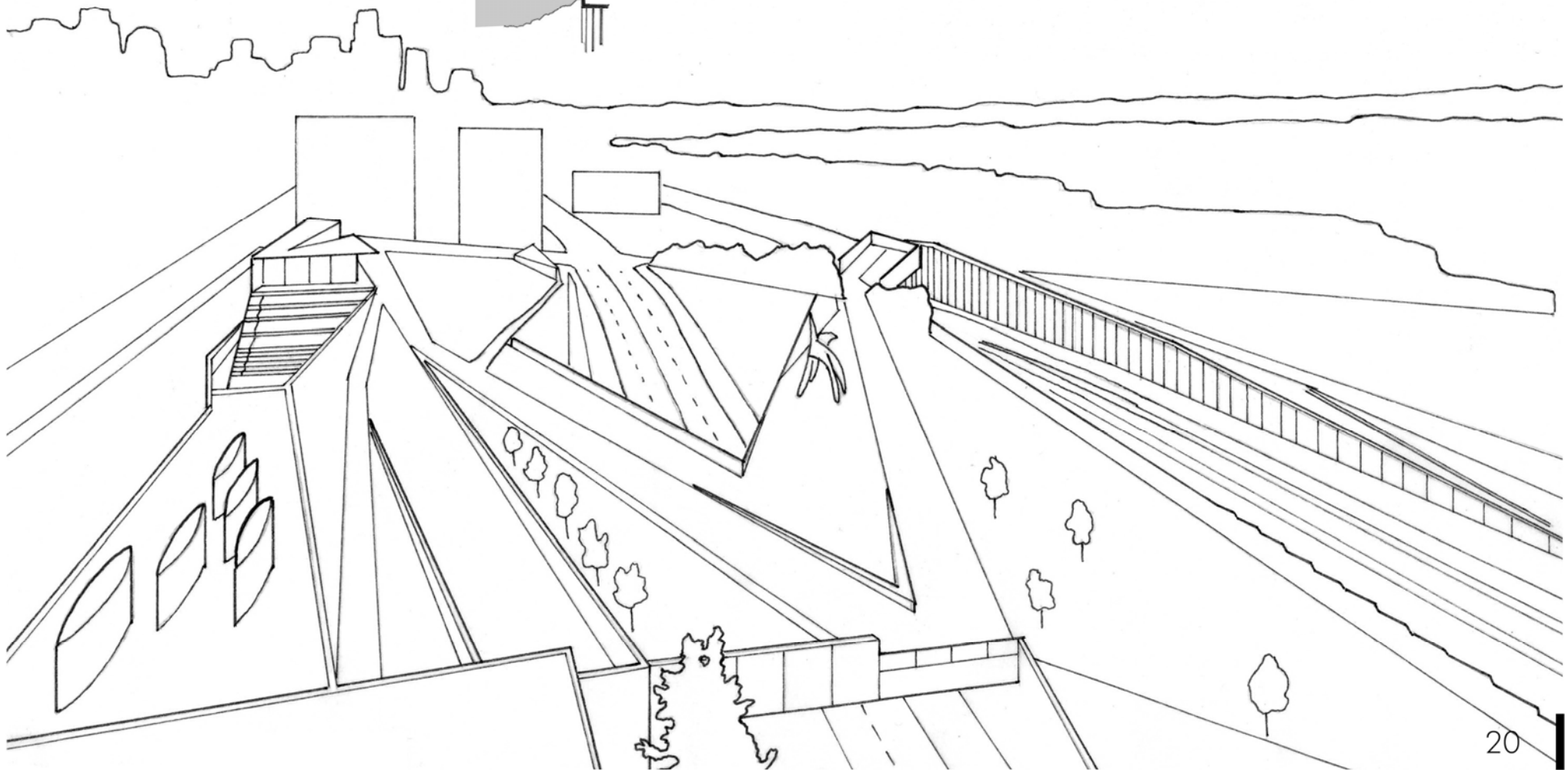


Exhibition Center

Park Sections



Aerial view



Chicago Visitor Center Pavilion

Arch. 2201, Fall 2009, 3 month study

Assignment: Design a visitors center pavilion and cafe in the Daley Bicentennial Plaza in Chicago's Loop. In addition to a visitors center and a cafe, the pavilion should include a multipurpose space that can be used as an art gallery or a meeting room, and should also include an outdoor performance space.

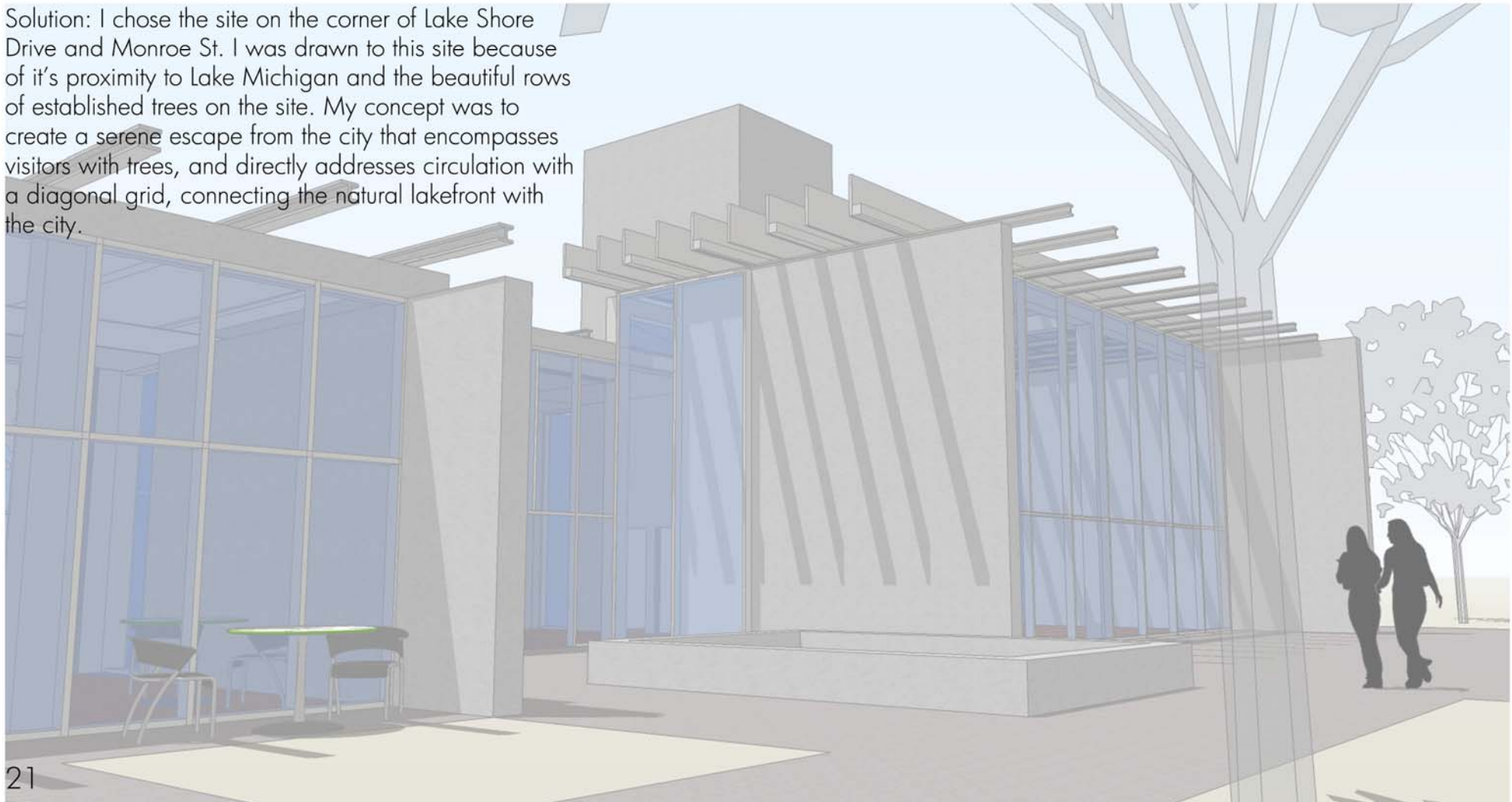


Site Circulation

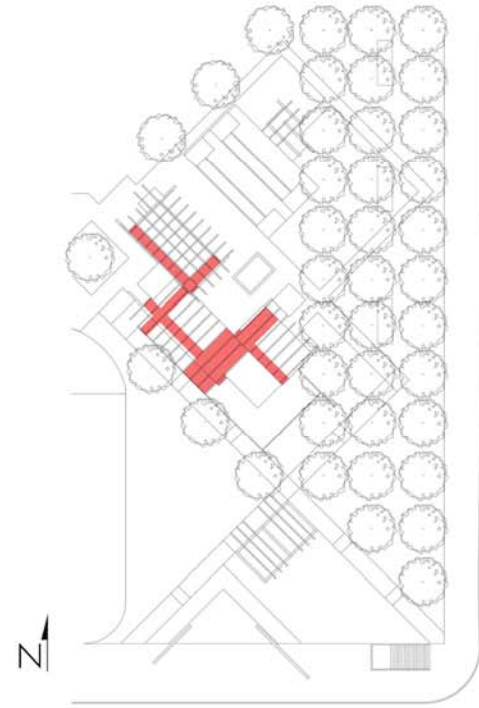
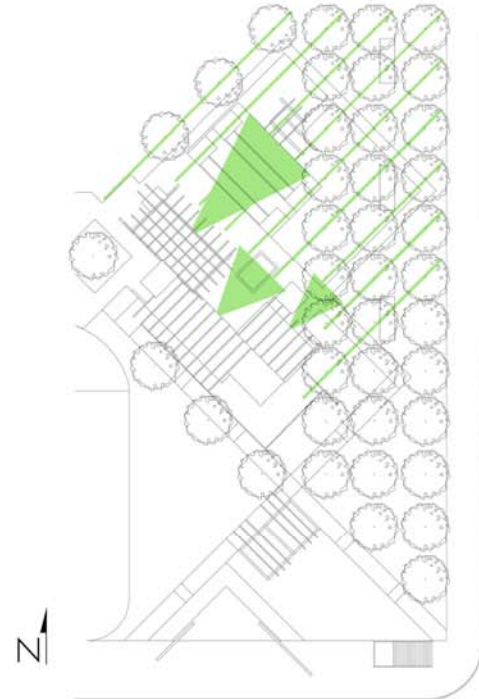
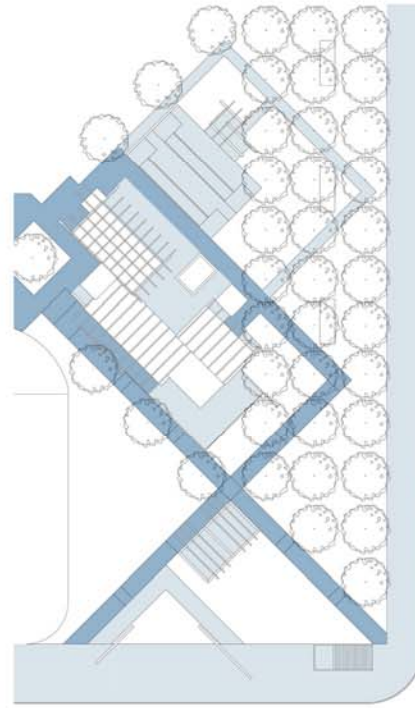
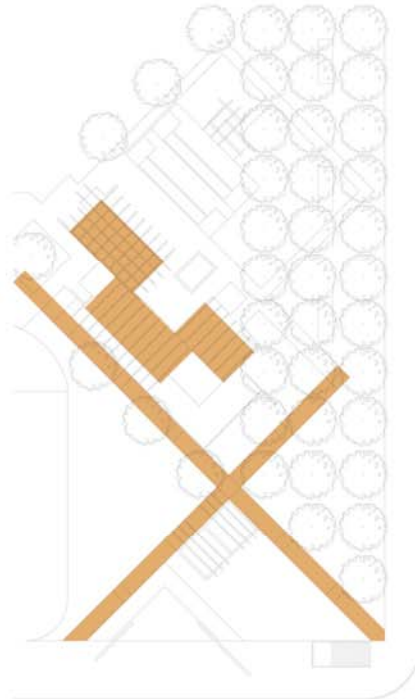
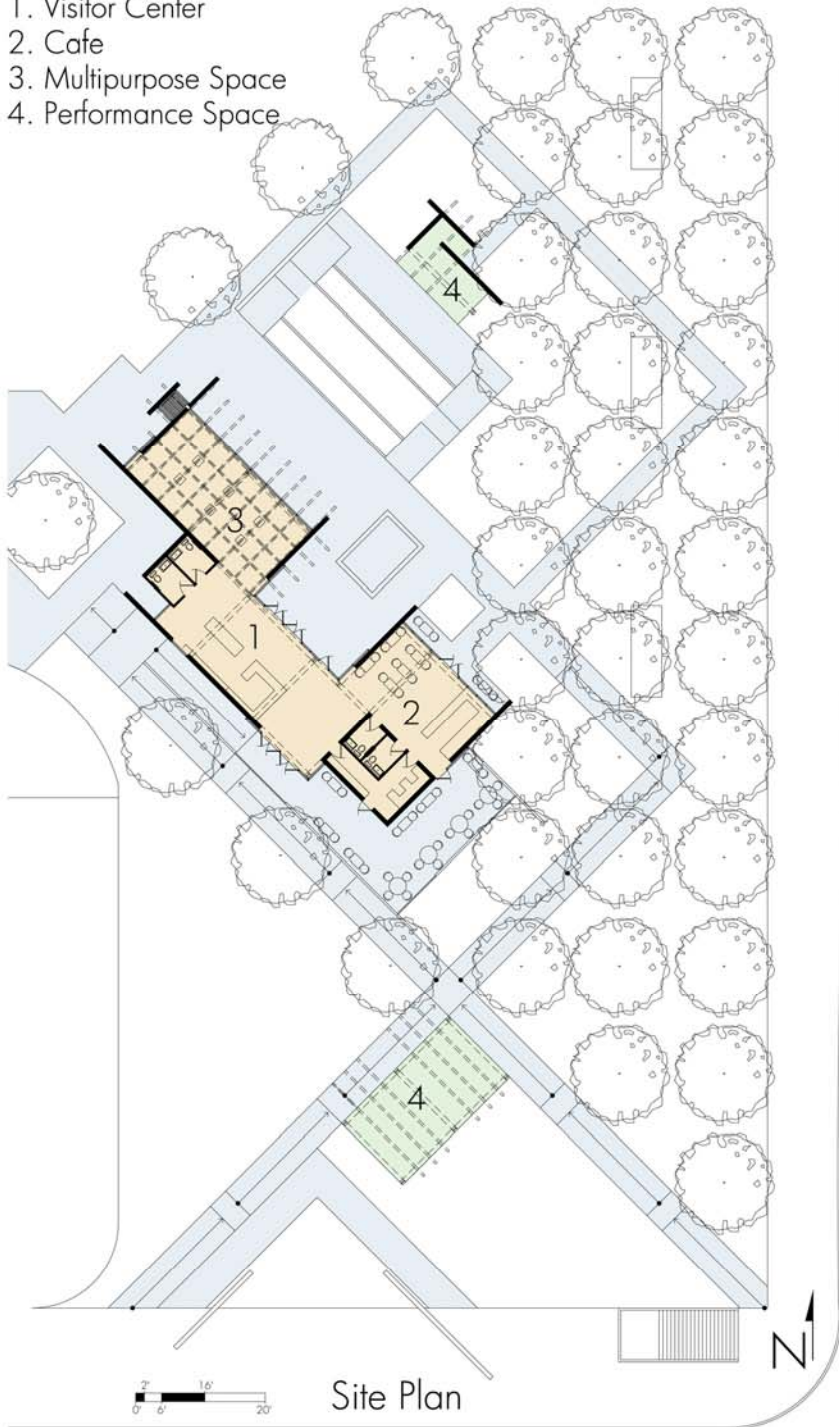


Site Location

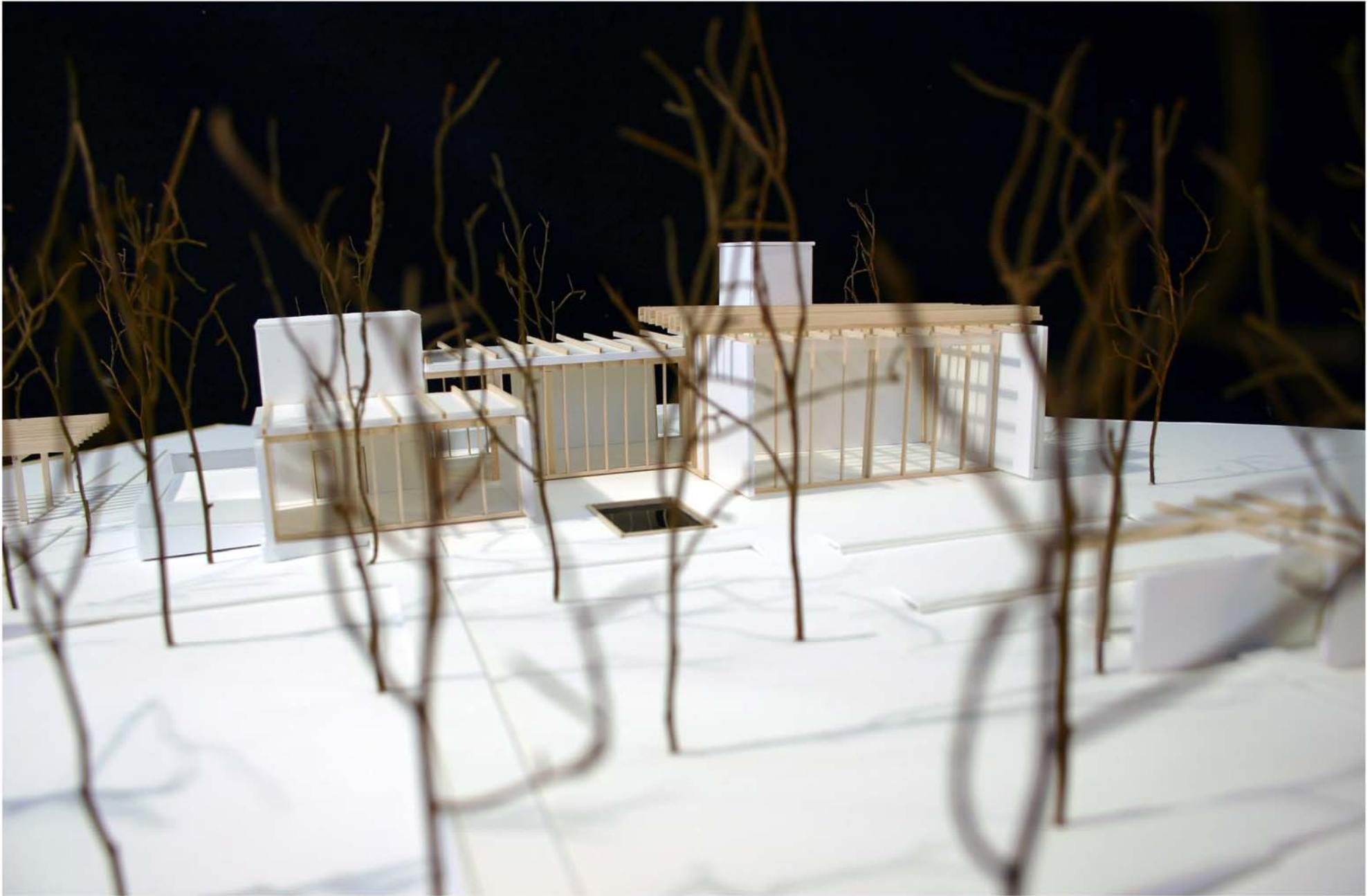
Solution: I chose the site on the corner of Lake Shore Drive and Monroe St. I was drawn to this site because of its proximity to Lake Michigan and the beautiful rows of established trees on the site. My concept was to create a serene escape from the city that encompasses visitors with trees, and directly addresses circulation with a diagonal grid, connecting the natural lakefront with the city.

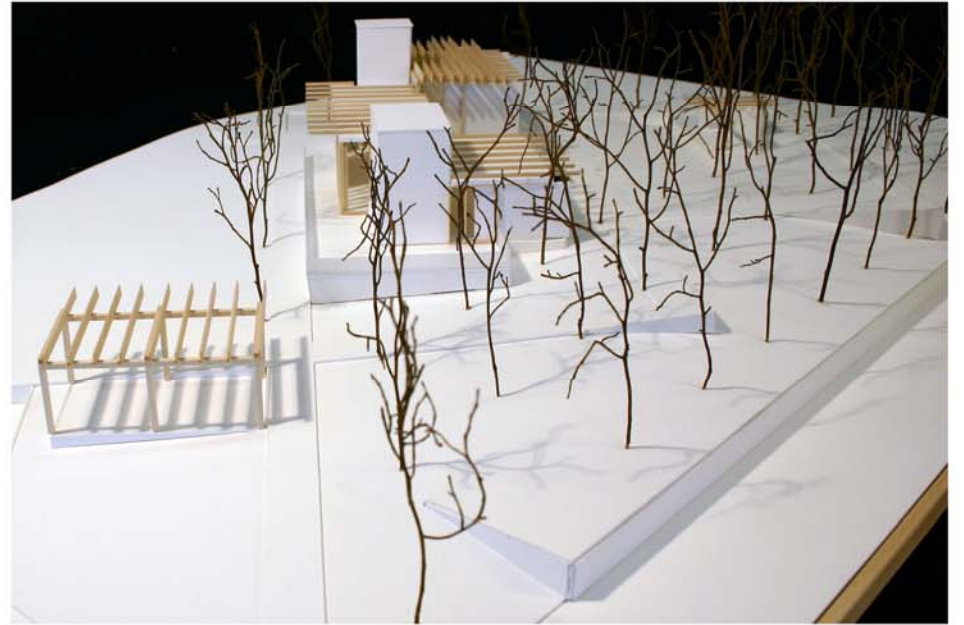


1. Visitor Center
2. Cafe
3. Multipurpose Space
4. Performance Space



Chicago Visitor Center Pavilion





Detail Model

Arch. 2201, Fall 2009

Assignment: Take one structural bay in a space from the Chicago Visitor Center Pavilion. Make a detailed model at 3/4" scale. The purpose of this assignment is to develop a further understanding of how spaces work structurally.

Solution: I modeled a bay from my multipurpose space. By modeling at this scale, I was able to understand how the glass roof in this space works.

