

LOUISA SURTZ

ARCHITECTURE PORTFOLIO

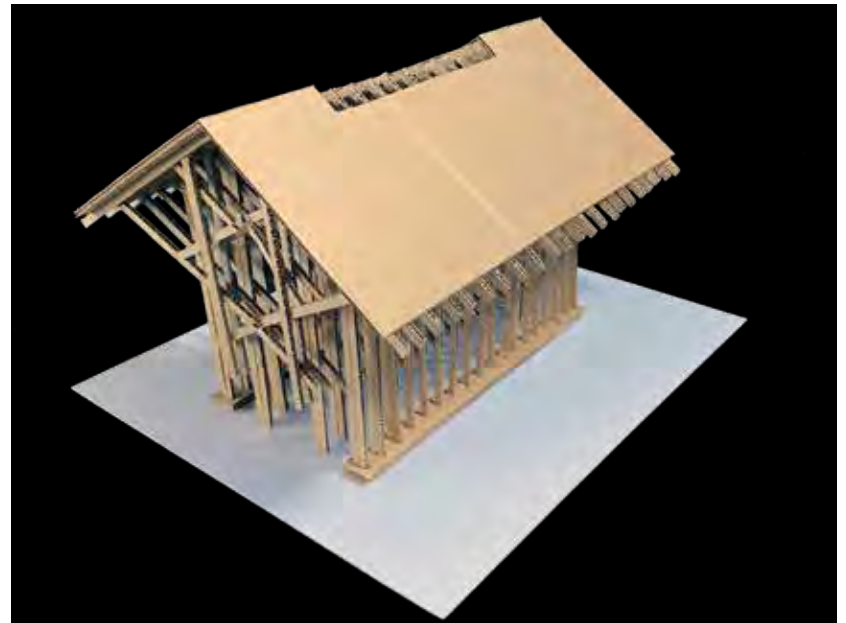
BUILDING ANALYSIS PROJECT

Course: Architecture 1100 - Introduction to Architecture

Duration: 4 weeks

Professor Karen Pearson

Objective: To research and create a model of the Thorncrowne Chapel in Eureka Springs, Arkansas.

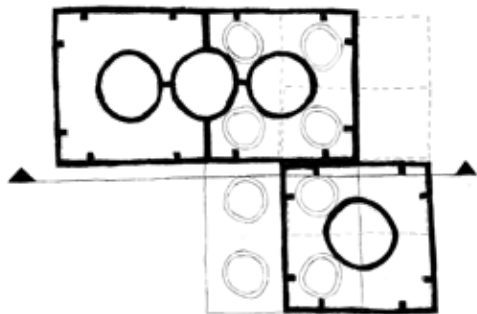




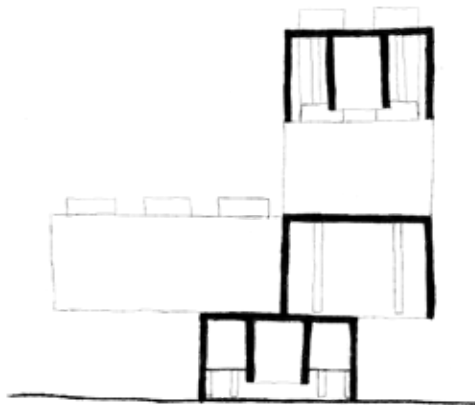
DUPLO PROJECT

Course: Architecture 1121 - Arch. Design Communication
Duration: 3 weeks
Professor Karen Pearson

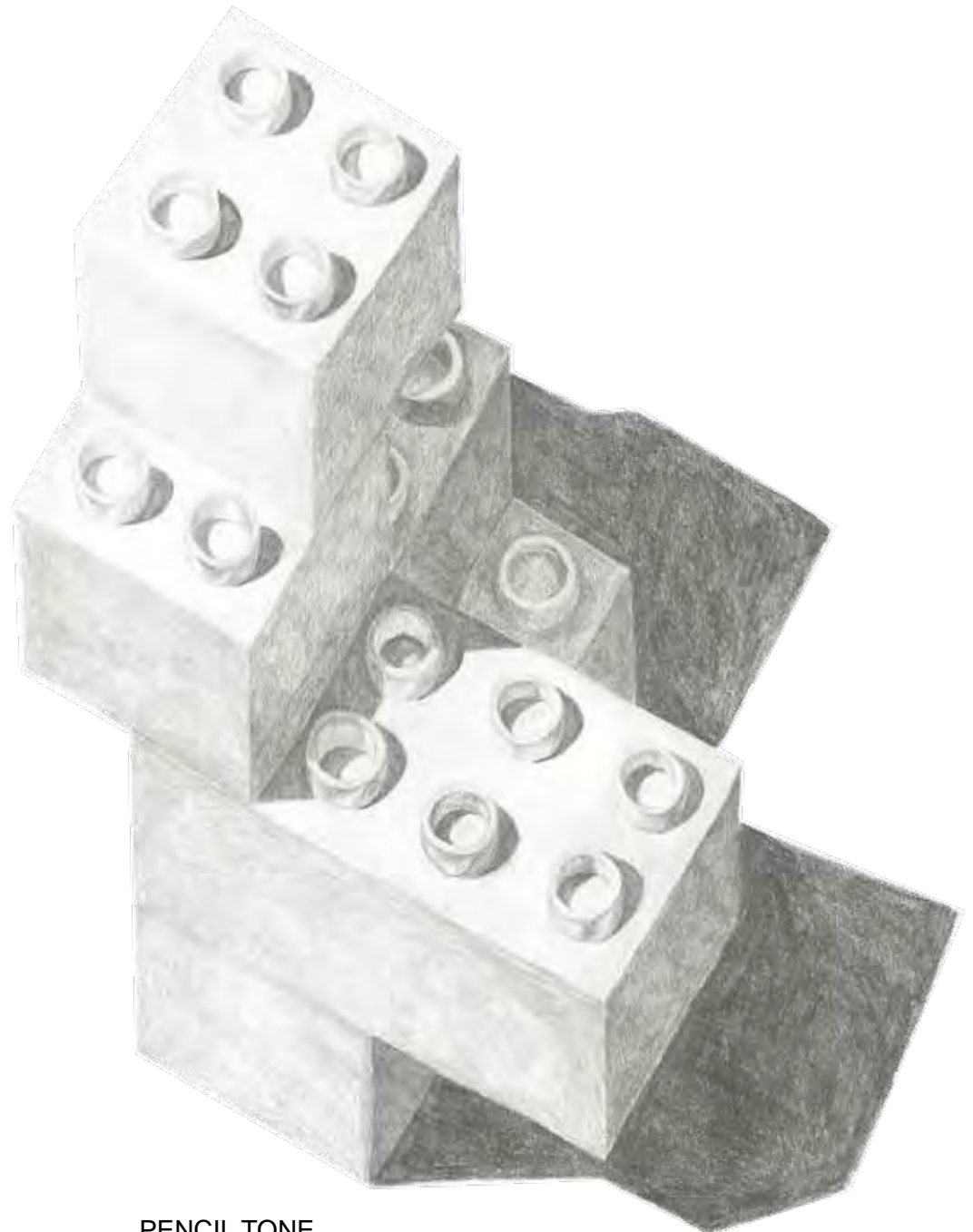
Objective: To create freehand orthographic and paraline drawings of an arrangement of Duplo blocks.



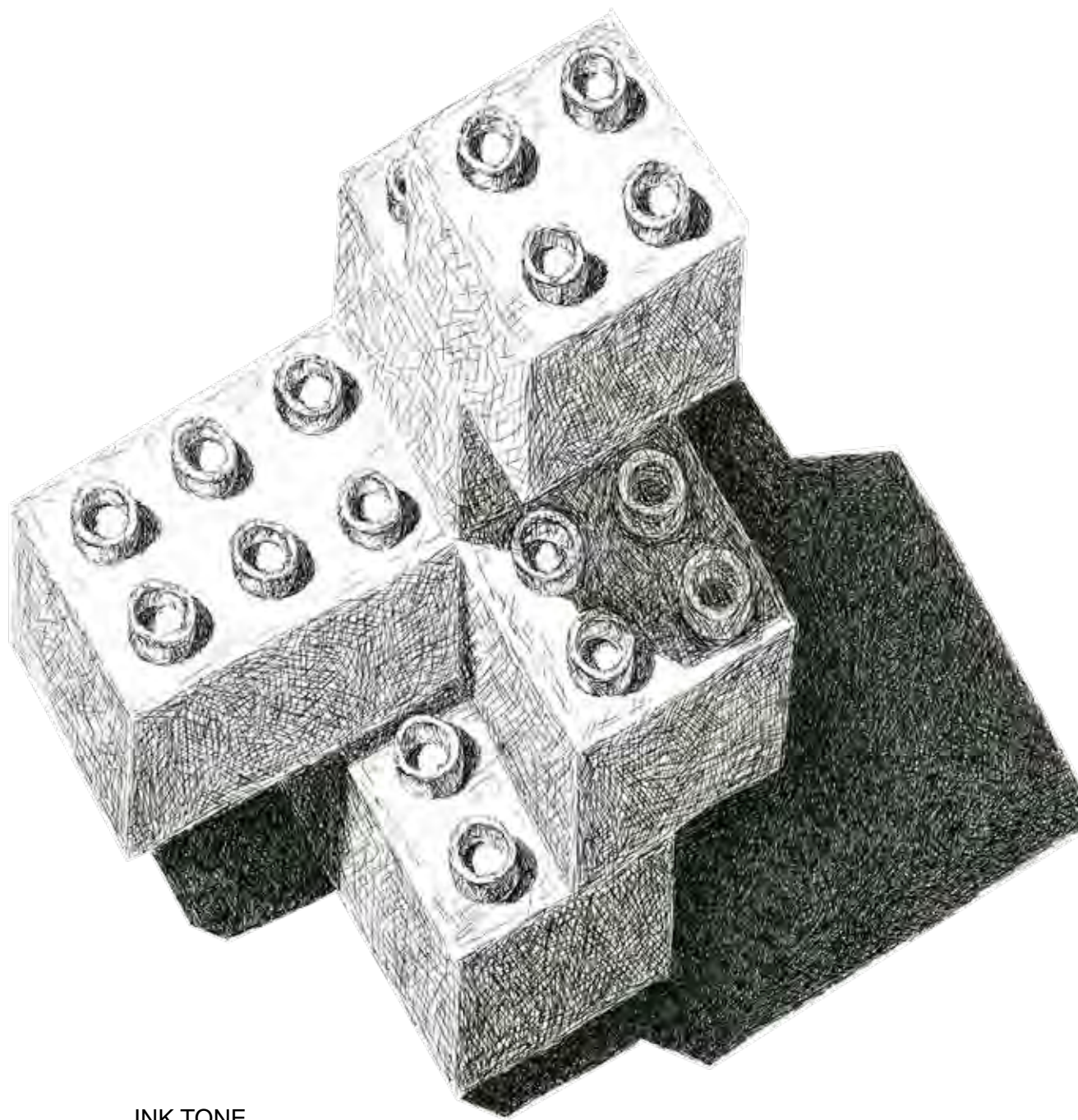
PLAN



SECTION



PENCIL TONE



INK TONE

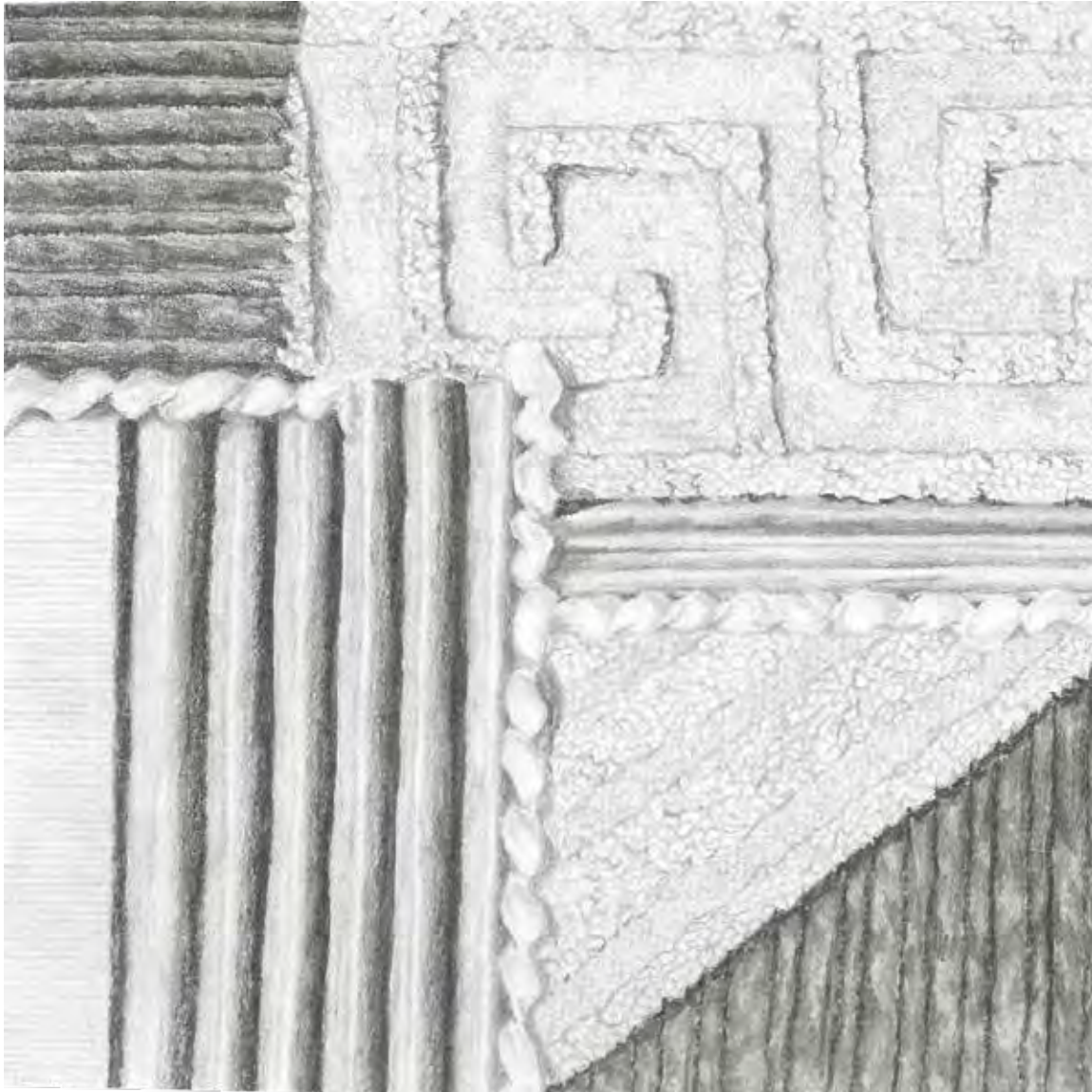
TEXTURE COLLAGE

Course: Architecture 1121 - Arch. Design Communication
Duration: 2 weeks
Professor Karen Pearson

Objective: To compose a collage out of textured materials and draw it in detail.



COLLAGE

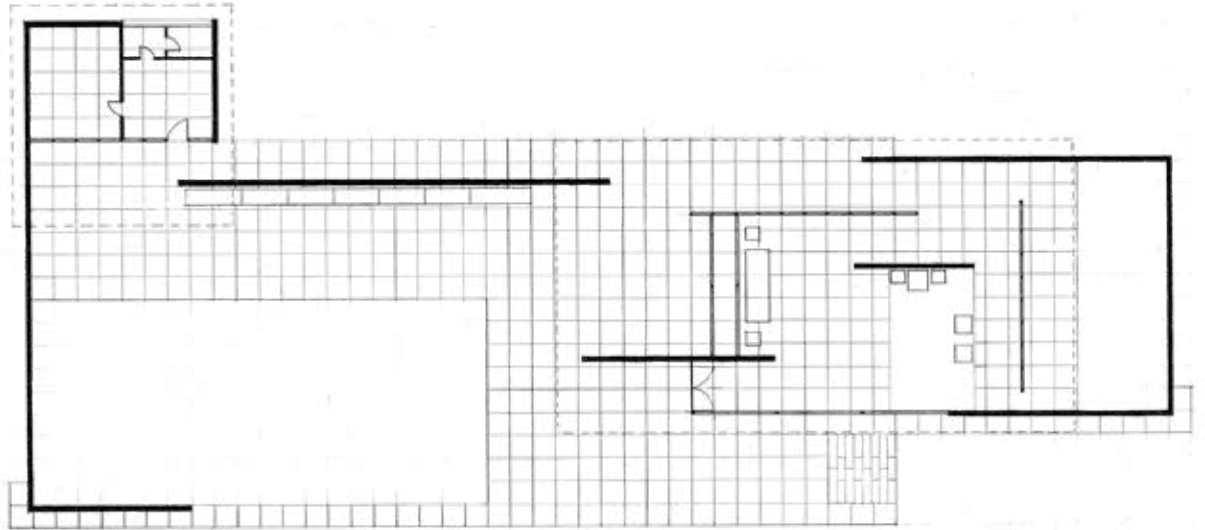


DRAWING

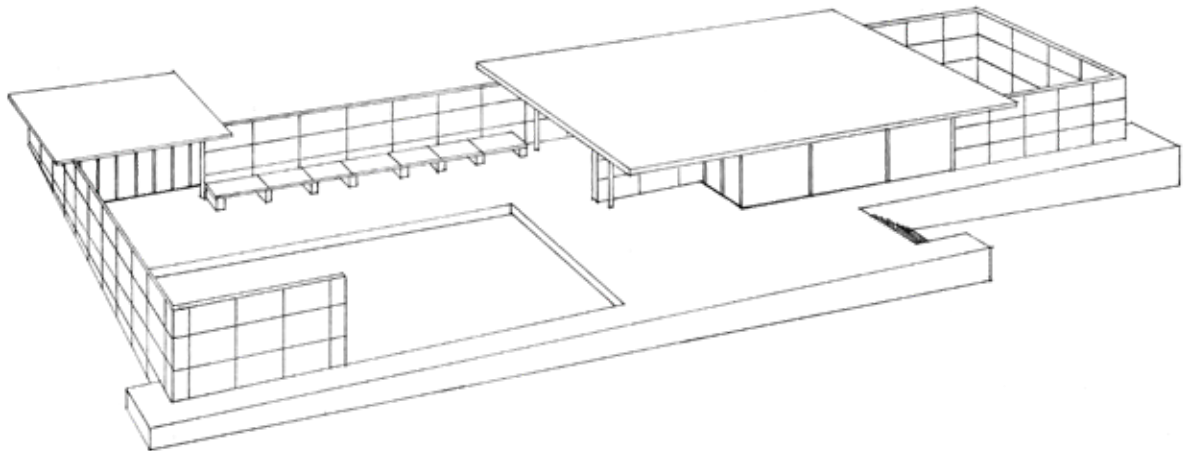
BARCELONA PAVILION

Course: Architecture 1121 - Arch. Design Communication
Duration: 4 weeks
Professor Karen Pearson

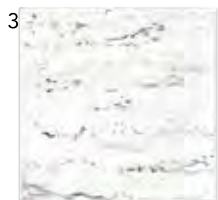
Objective: To analyze and document the composition and materials of the Barcelona Pavilion using various types of drawings.



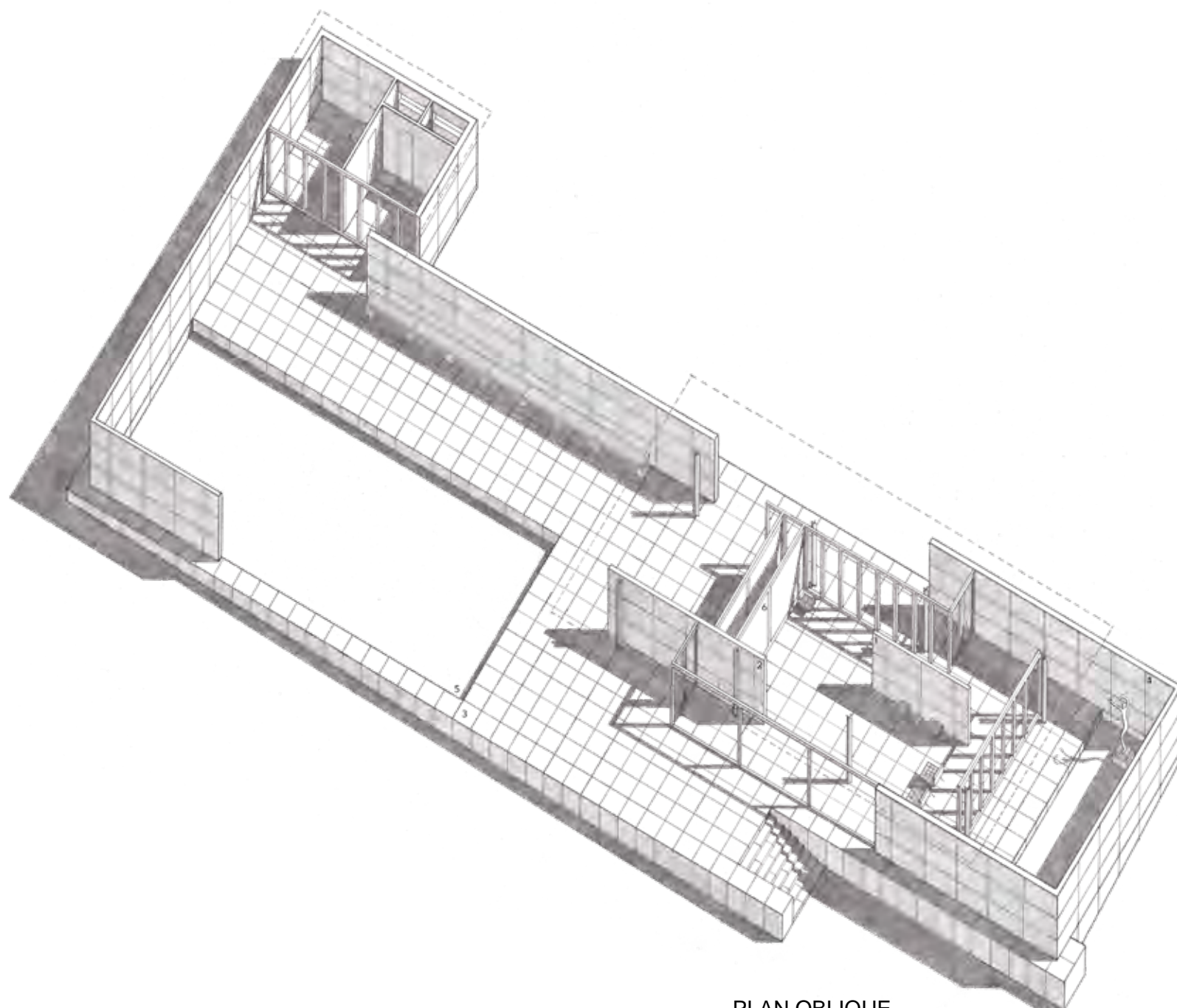
PLAN



PERSPECTIVE



MATERIALS



PLAN OBLIQUE

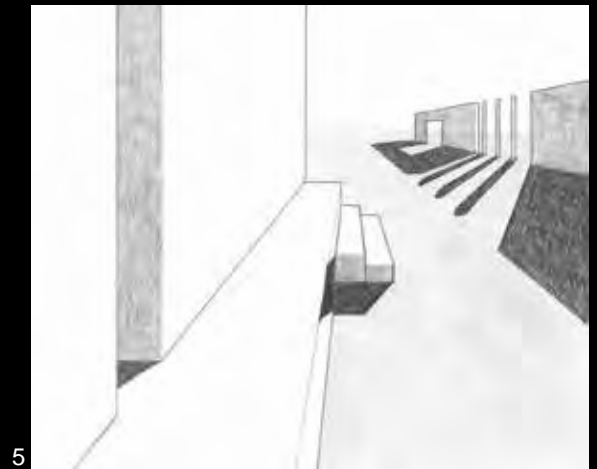
PERSPECTIVE JOURNEY

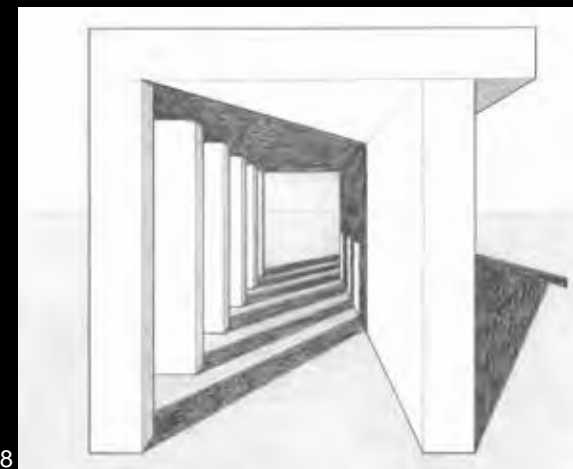
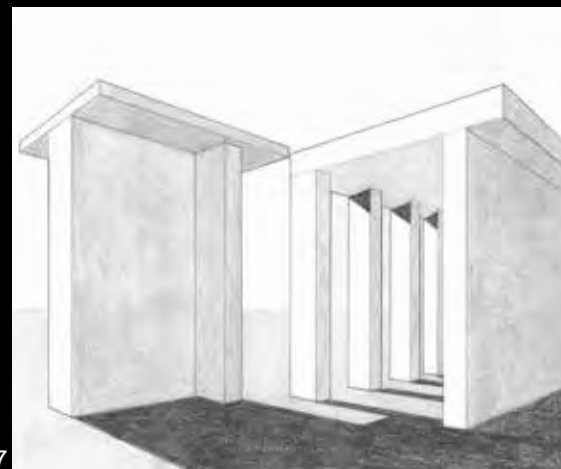
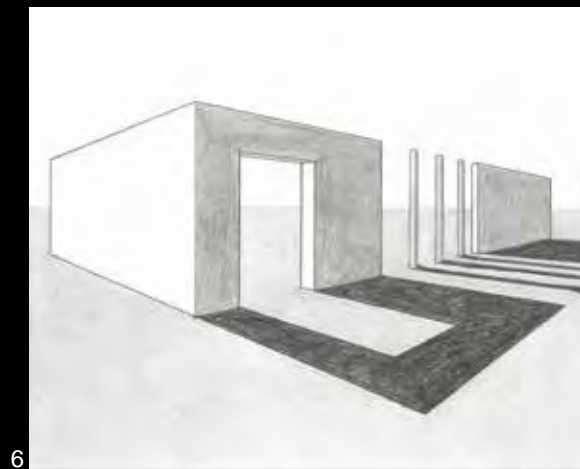
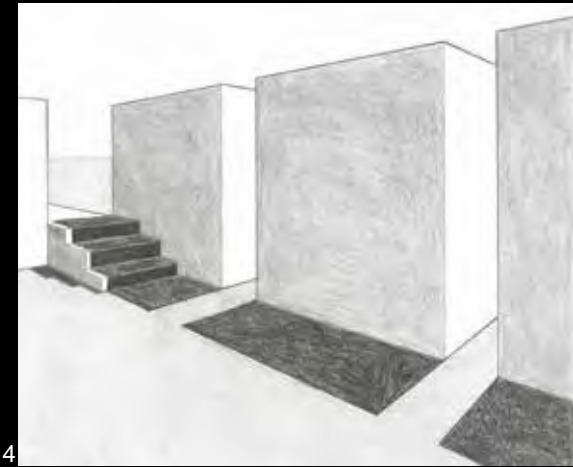
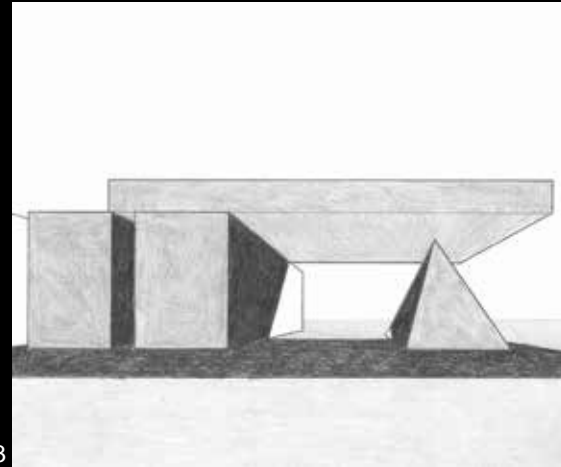
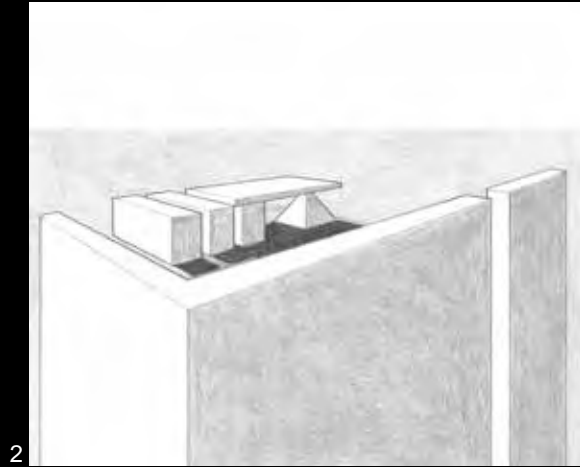
Course: Architecture 1121 - Arch. Design Communication

Duration: 2 weeks

Professor Karen Pearson

Objective: To create a sequence of perspective drawings that journey through a geometric scene. Drawings are in either one-point or two-point perspective and shadows are drawn accurately according to chosen vanishing points.





COMMUNITY GATHERING SPACE

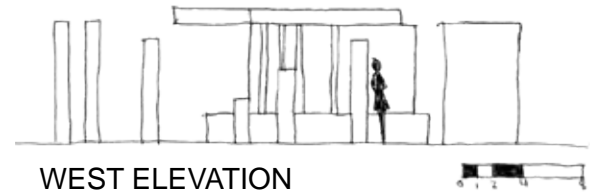
Course: Architecture 1131 - Introduction to Architectural Design
Duration: 3 Weeks
Professor Jane Ostergaard

Objective: To create a gathering space for a site on the College of Dupage Campus using limited architectural elements. The space consists of an entry, path, and gathering space and should accommodate small groups of people in various sizes.

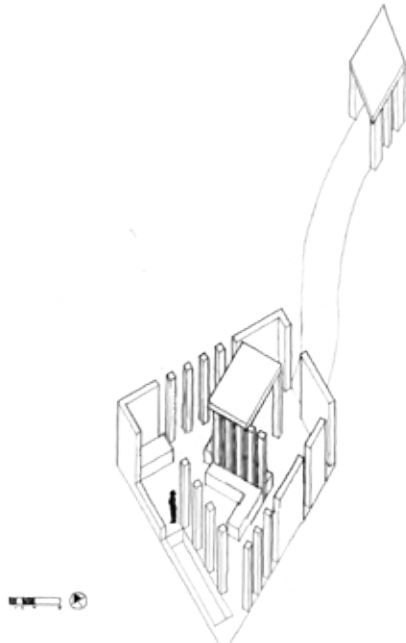
Concept: A space that promotes thought and interaction. Views of the surrounding nature through the architecture and places for sitting in solitude provide space for visitors to think. L-shaped seating allows groups to sit together while the main circulation of the space moves past, both of which allow visitors to interact.



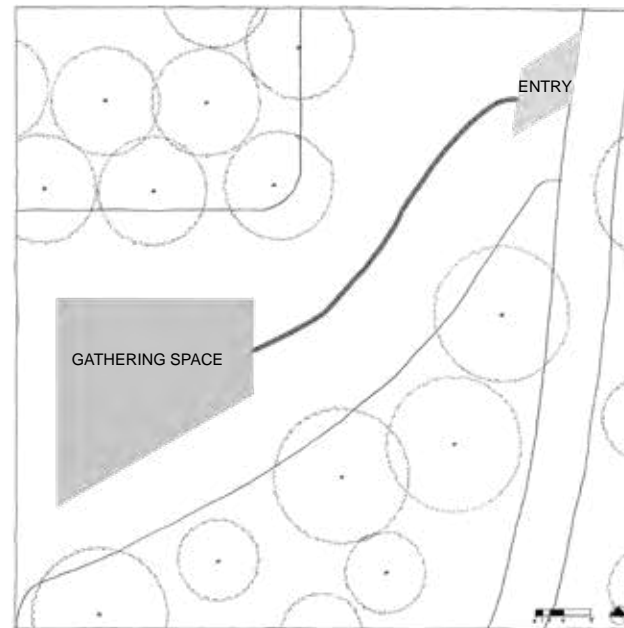
NORTH ELEVATION



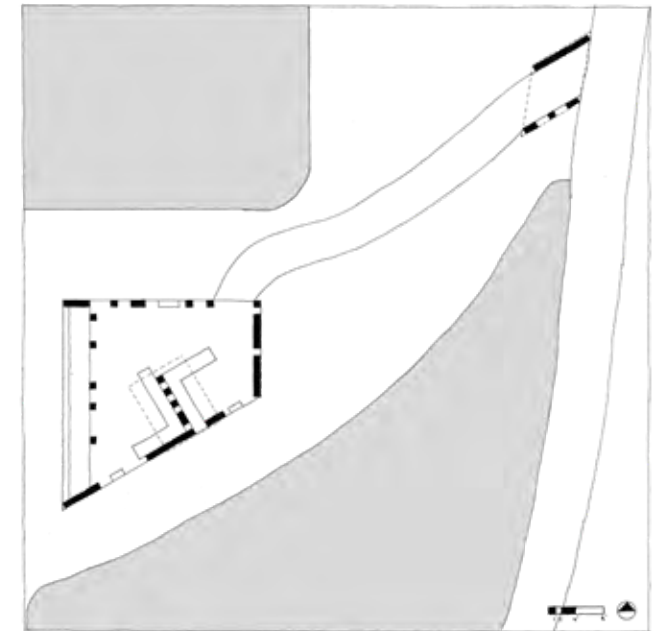
WEST ELEVATION



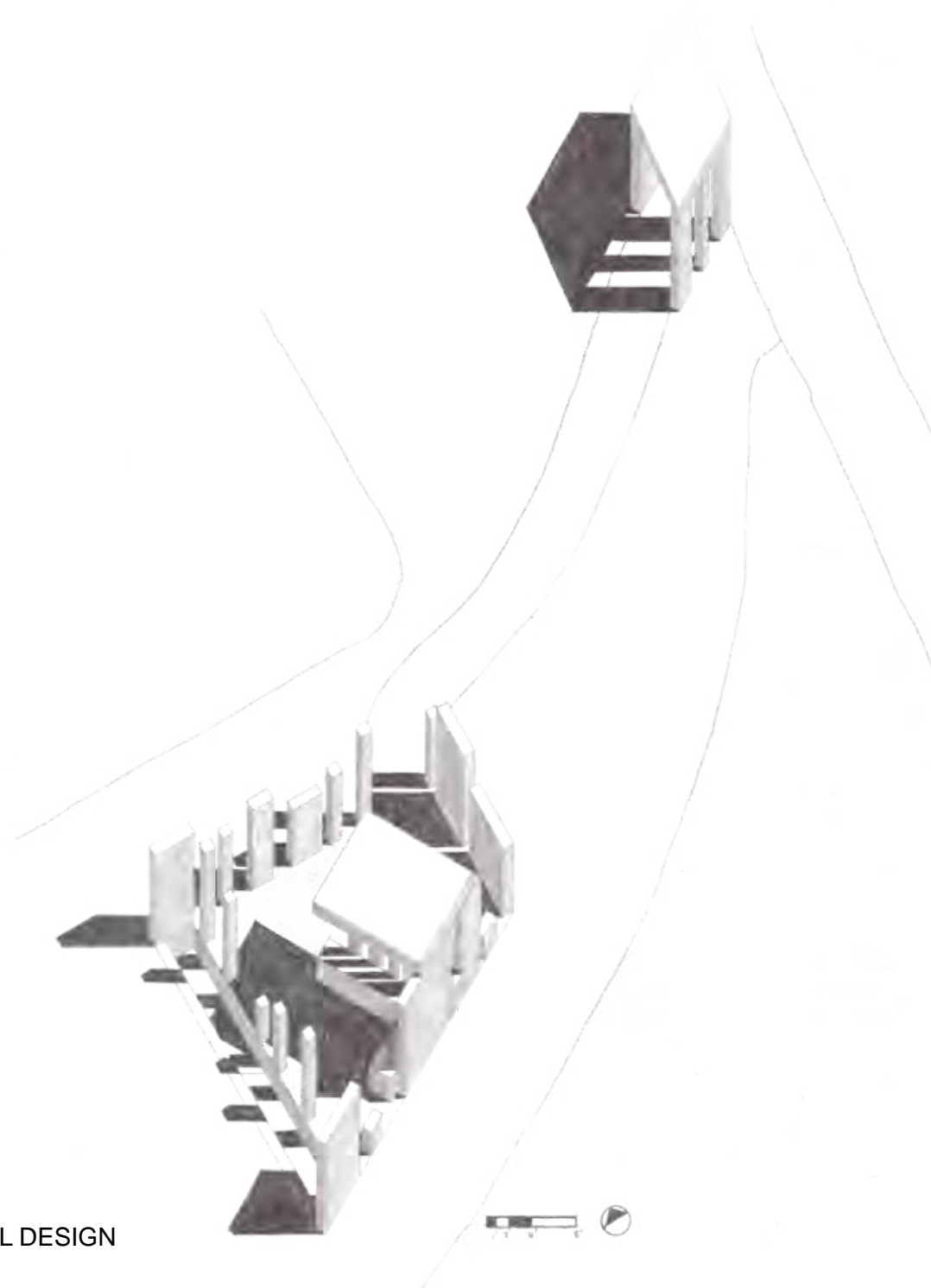
PRELIMINARY DESIGN



PARTI



PLAN



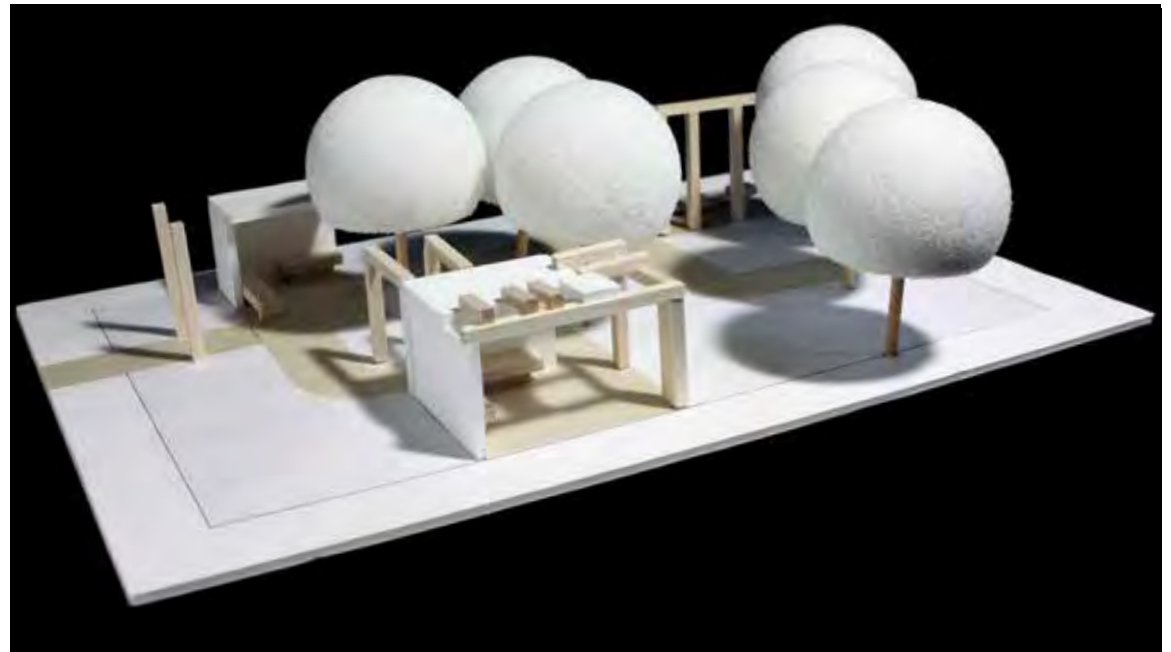
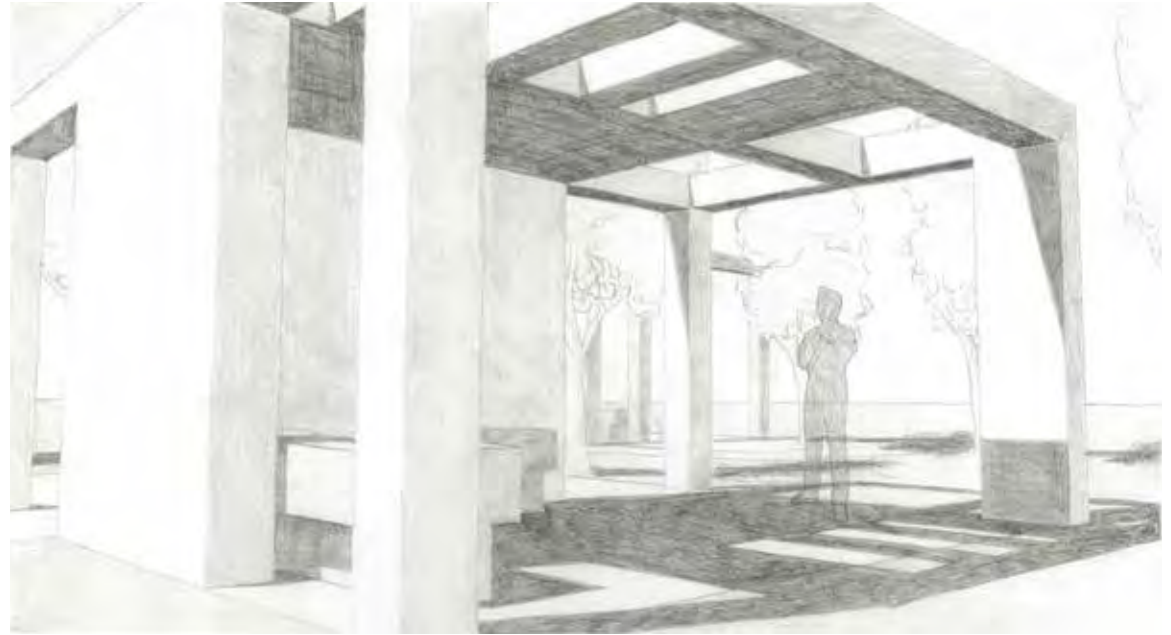
FINAL DESIGN

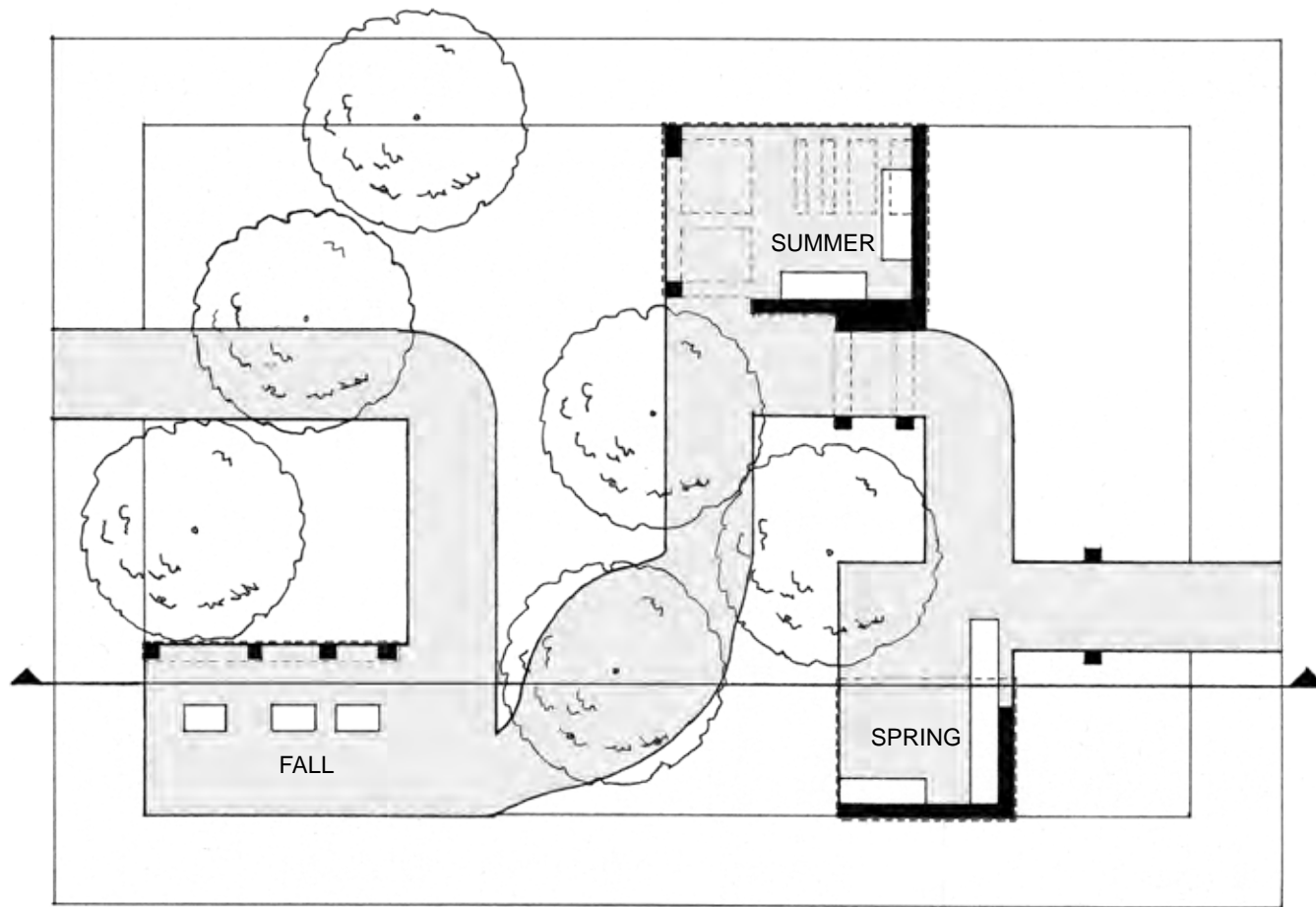
SPATIAL SEQUENCE

Course: Architecture 1131 - Introduction to Architectural Design
Duration: 3 weeks
Professor Jane Ostergaard

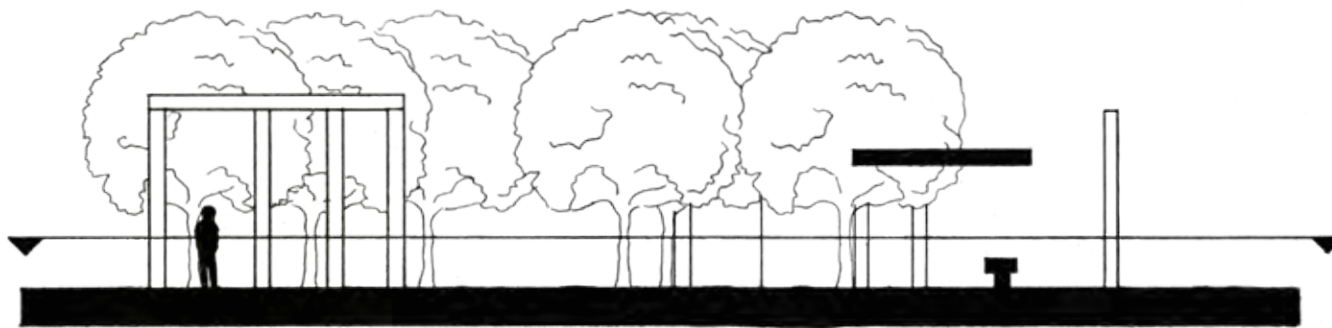
Objective: To use a kit of parts to create a composition of three spaces linked by a path. In each space, the experience of either spring, summer, or fall is enhanced by the architecture.

Concept: A space that accentuates certain outdoor conditions so the user can appreciate the characteristics that distinguish the seasons. Spring is characterized by the views of the spaces ahead, which represents the anticipation of the coming year. Lines of sight through the space's entry and from the seating within allow for optimal views of the rest of the composition. The summer space emphasizes the sun and the shadows it creates. A pattern of beams overhead creates interesting shadows at various times of day. Fall focuses on the trees and their changing leaves. Views of three trees are framed by the architecture and can be experienced from the three seats in the space.

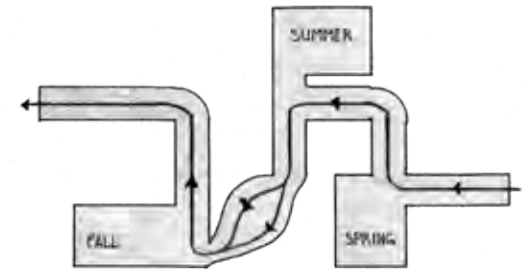




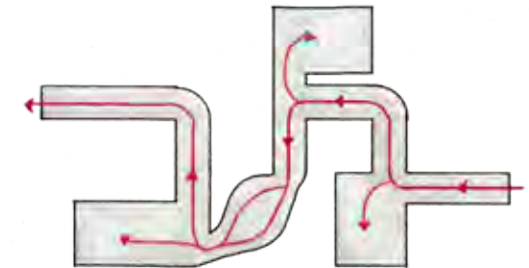
PLAN



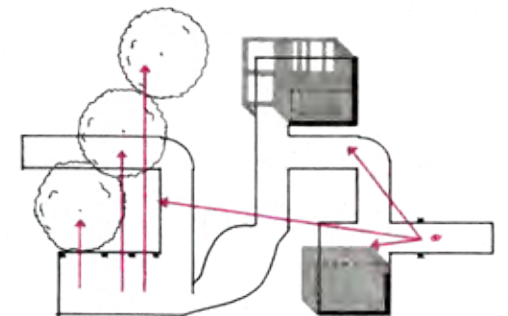
SECTION



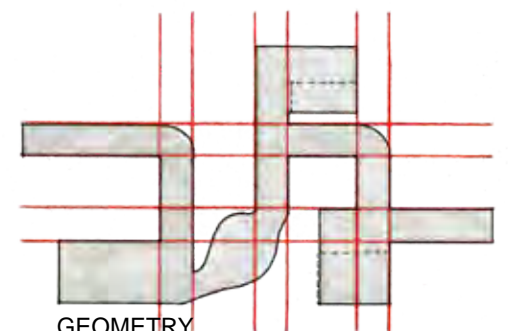
PARTI



CIRCULATION



CONCEPT



GEOMETRY

NATURE OF MATERIALS

Course: Architecture 1131 - Introduction to Architectural Design
Duration: 3 weeks
Professor Jane Ostergaard

Objective: To express the concepts and materiality of an assigned building using wood, metal, glass, and concrete. The final model is to be abstract and a minimum of four feet tall.

Concept: This model is an abstraction of concepts found in the Teatro del Mondo, a theater that floated on a barge around Venice in the 1980s. Key concepts were how it captured the essence of a building in its color and geometric forms, provoked a dreamlike mood, and was influenced by the movement of the water. Additionally, the stationary and traditional backdrop of Venice contrasts the theater's playful presence.

In the model, an object of house-like shapes hangs from a frame of white wood. The hanging form, much like a child's drawing of a house, hints at reality, yet is not. Similarly, the Teatro is recognized as a building despite its abstract qualities.

The forms are suspended in the air, and move in a breeze. Plexiglass obscures some views, capturing the elusive nature of dreams essential to the theater. From some angles, there is a clear view of the forms, but as one moves to a different angle, they disappear as dreams do.

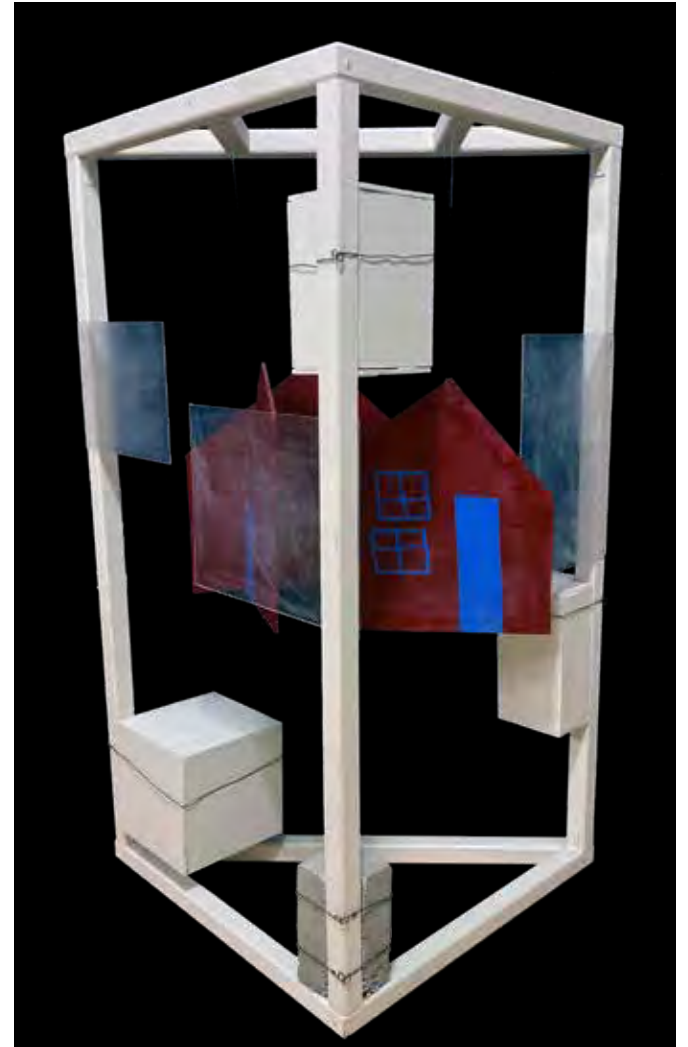
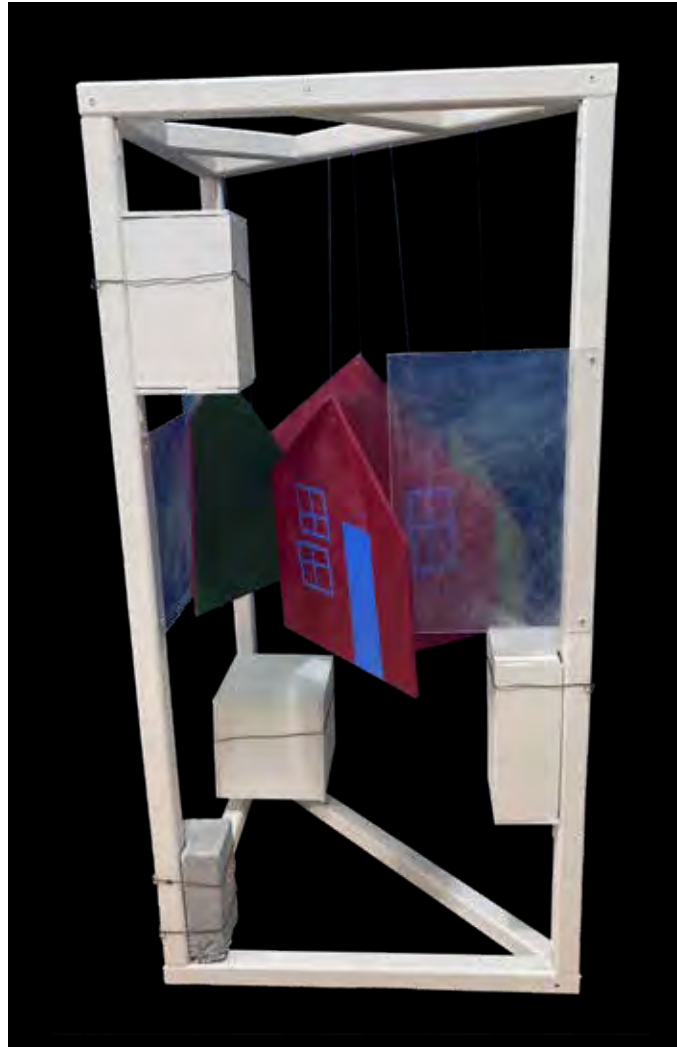
The white wood and rectangular blocks of the model represent the tangibility and permanence of tradition found in Venetian buildings. The stationary structures framed views of the ever-moving Teatro and provided a contrasting backdrop.



TEATRO DEL MONDO



SMALL SCALE MODEL



FINAL MODEL

INSPIRATIONS COLLAGE

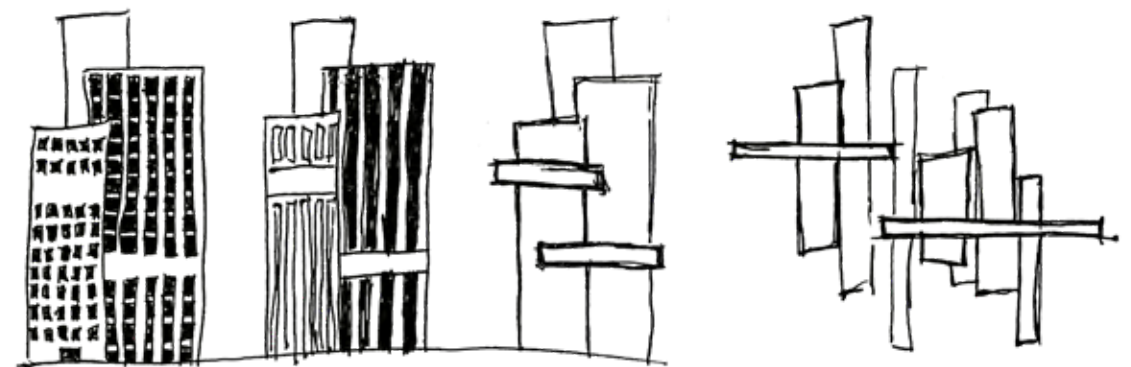
Course: Architecture 2201 - Architectural Design I
Duration: 3 weeks
Professor Mark Pearson

Objective: To create a three-dimensional collage inspired by Chicago's architecture. The composition must incorporate photos and sketches created while exploring the city, a beautiful material, a found object, and text to help express concepts found in the city's architecture.

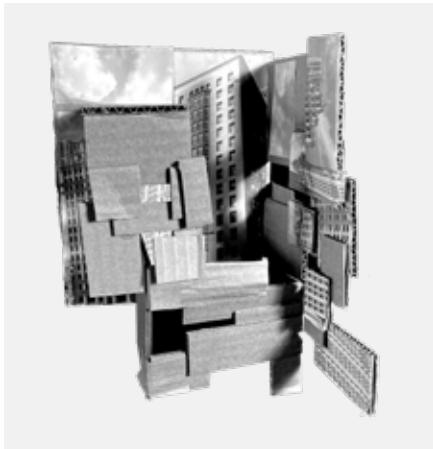
Concept: The composition expresses the verticality of Chicago's skyscrapers and the horizontal interruptions in their upward projection, like how a single row of contrasting windows or a period of solid wall breaks up a column of windows. The collage consists of vertical boxes held in place by horizontal planes.

A second concept is found in the reflectivity of the buildings' windows. Reflective material in the collage reveals surfaces that may be otherwise hidden from an angle, much like the role reflections play in the city, where a pedestrian may experience a view in a window they would not otherwise have seen.

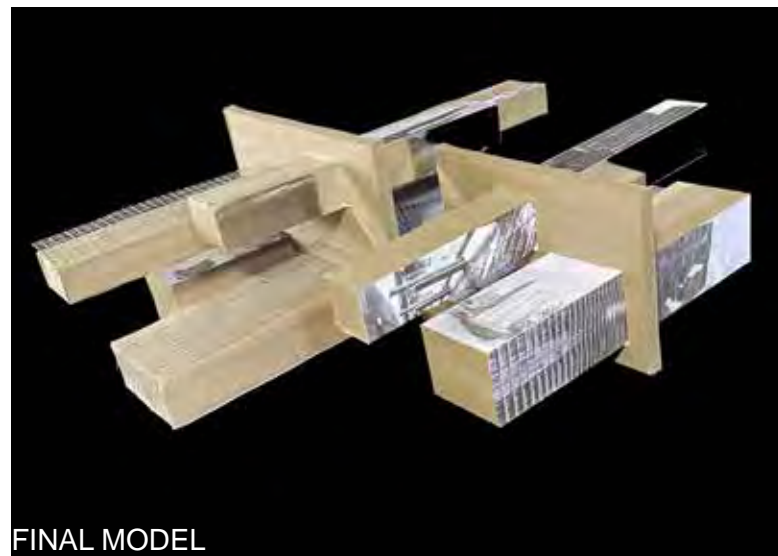
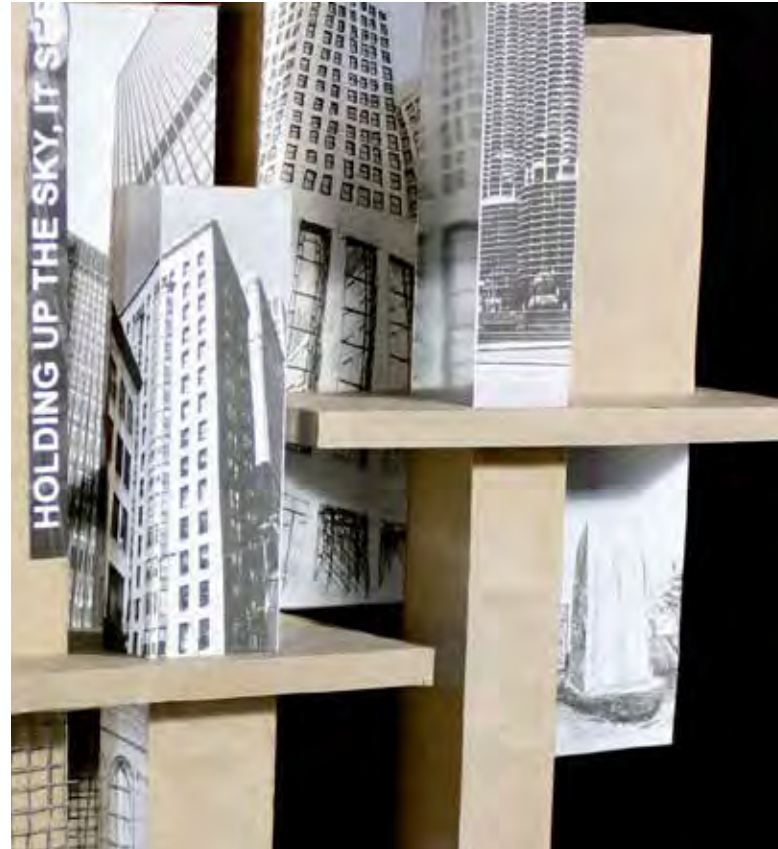
A quote from a book by Markus Zusak is written on one of the boxes. It reads, "The city buildings in the distance are holding up the sky, it seems." This could be an observation of Chicago's skyscrapers. To illustrate the perceived burden on the architecture, metal at the base of the boxes hints at the massive amounts of steel and reinforcement required to "hold up the sky."



CONCEPT



PROCESS



FINAL MODEL

ENVIRONMENTAL EDUCATION CENTER

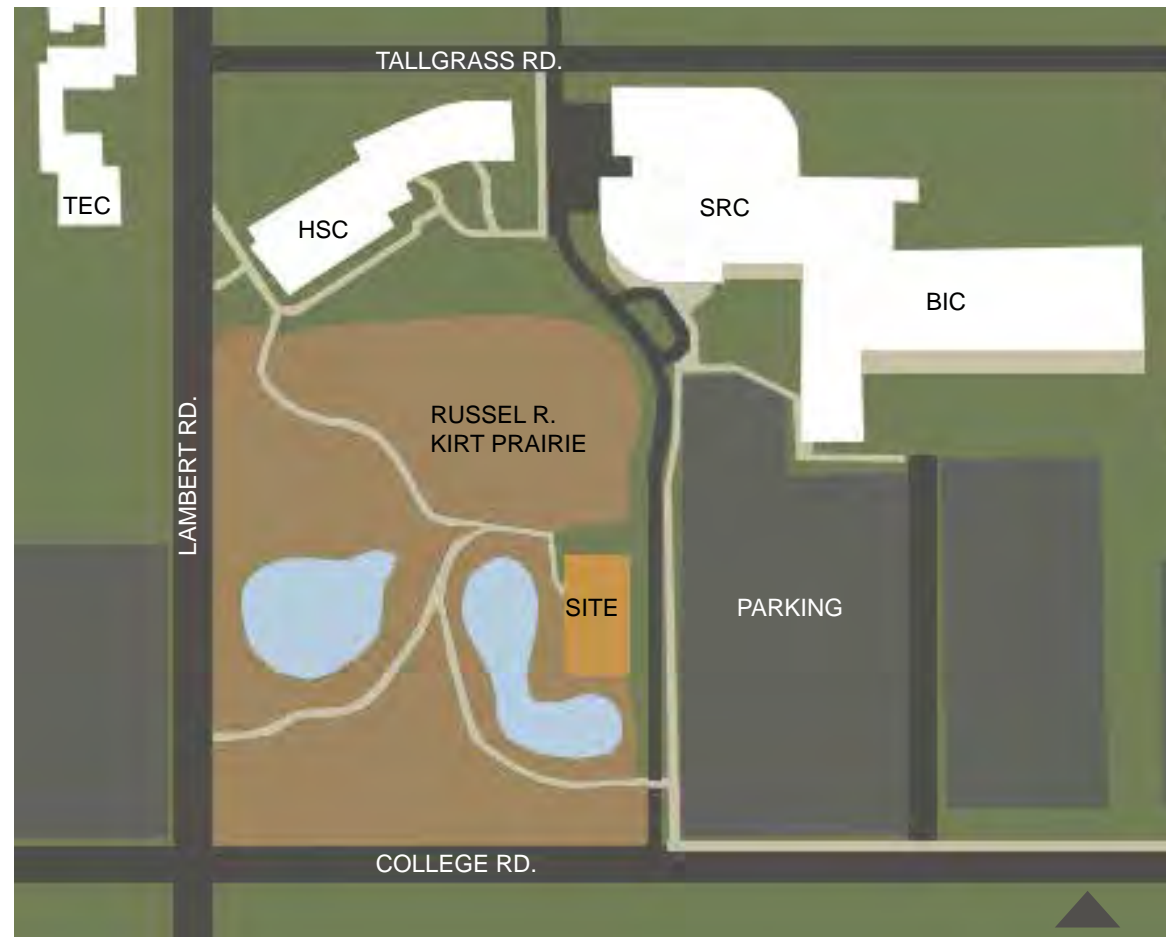
Course: Architecture 2201 - Architectural Design I

Duration: 11 weeks

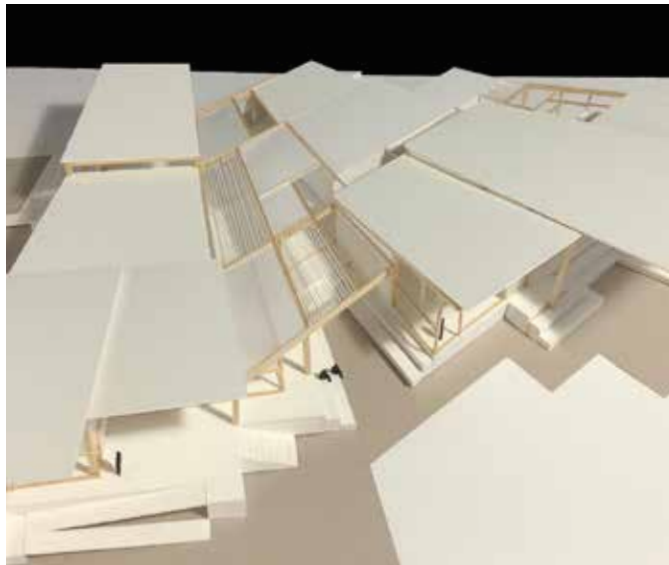
Professor Mark Pearson

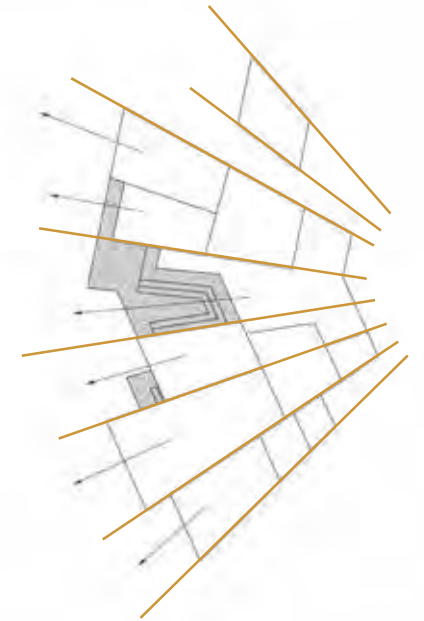
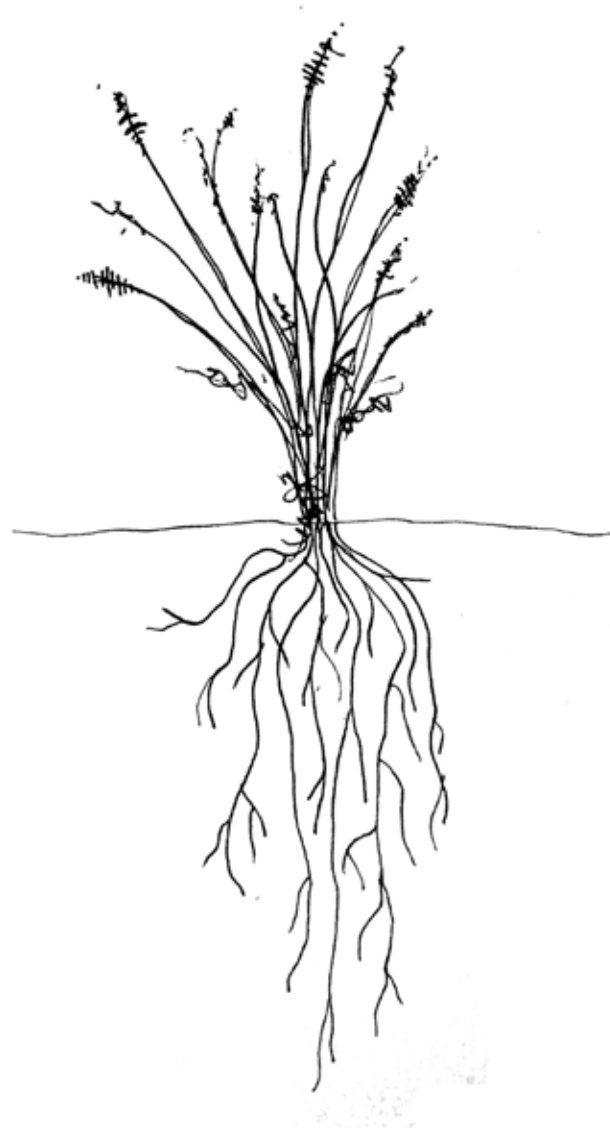
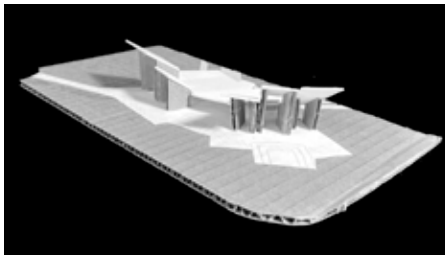
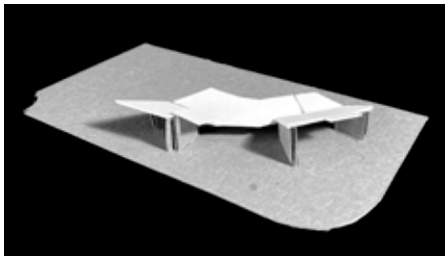
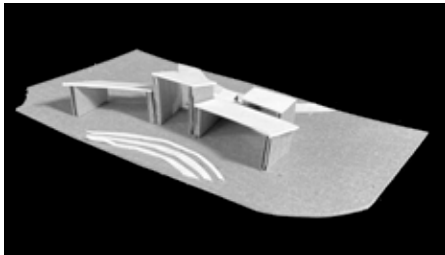
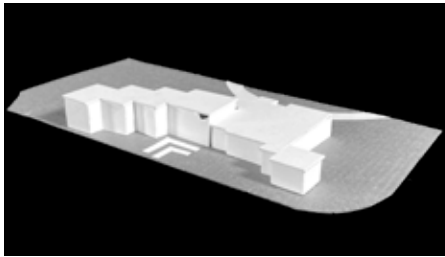
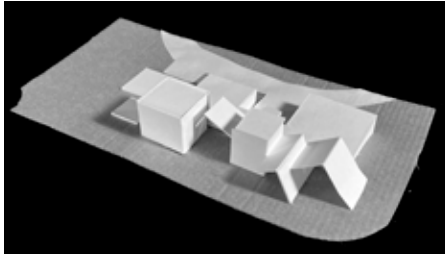
Objective: To design an environmental education center for a site on the College of DuPage campus near the Russel R. Kirt Prairie. The building serves the COD community by providing a place for education, recreation, and connection to the prairie.

Concept: A building that reaches out into its prairie setting, imitating the roots of the plants as they branch out to capture water from the ground. Like the roots draw their life from the soil, the building lets sunlight and views in on it's widened prairie side. Circulation through the building draws visitors towards the outdoor spaces, where one may experience the prairie and access the trails in the natural area.



CONTEXT





CONCEPT DIAGRAMS

PROCESS



CONCEPT



PARTI



PLAN



CIRCULATION



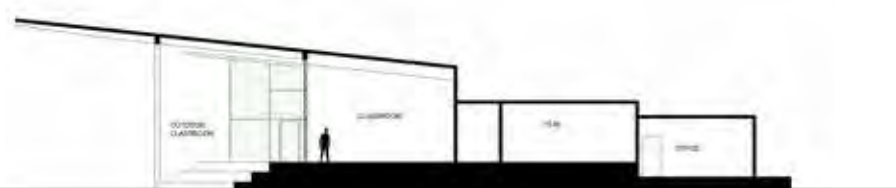
STRUCTURE



SITE DIAGRAM



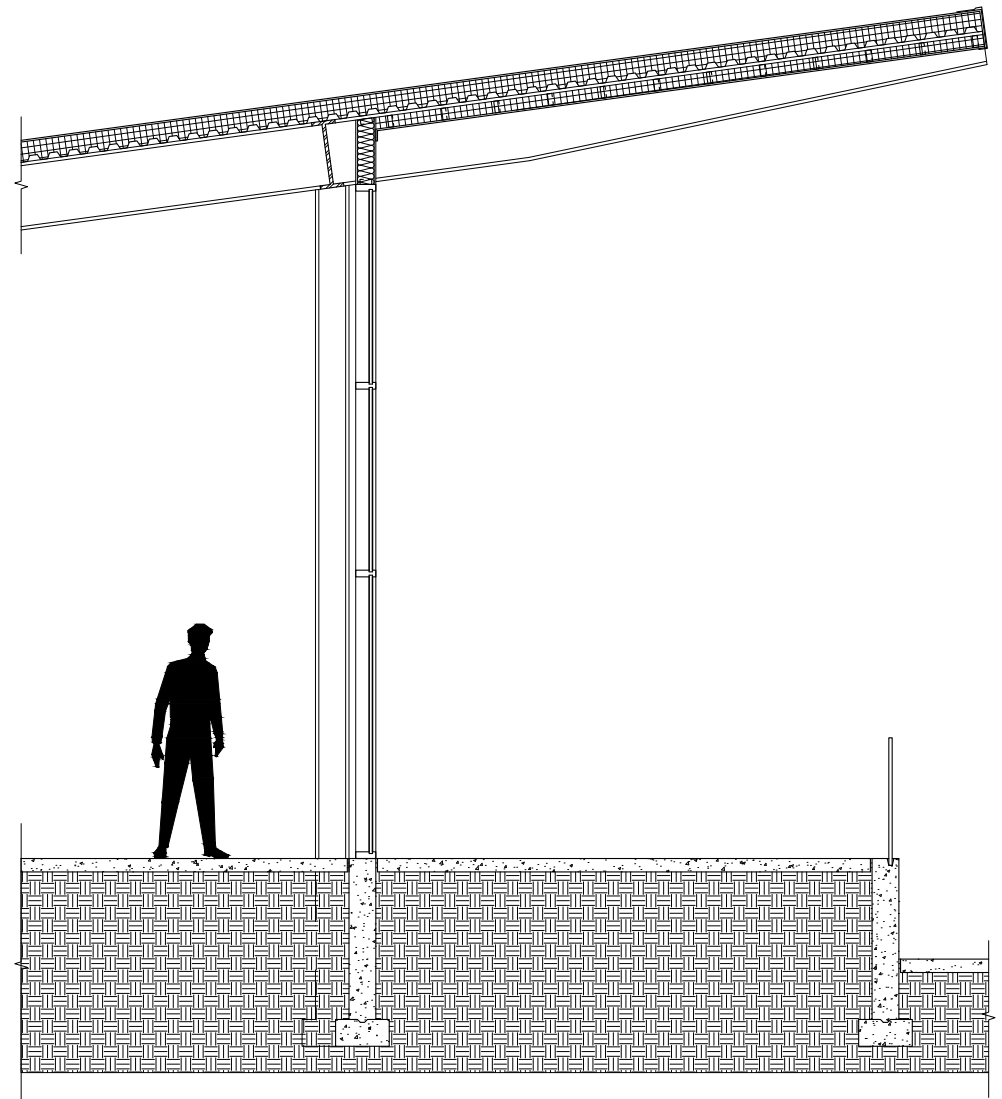
SECTION 3



SECTION 2



DETAIL MODEL



DETAIL WALL SECTION