

Olivia Smolen

Architecture Portfilio 2018-2019

02

Table of Contents

Barcelona Pavillion	04
Assemblage, Hierarchy, & Form	06
Spatial Sequence	08
Inspirations Collage	10
Center for Great Lakes Ecology	12

04

ARCH 1121

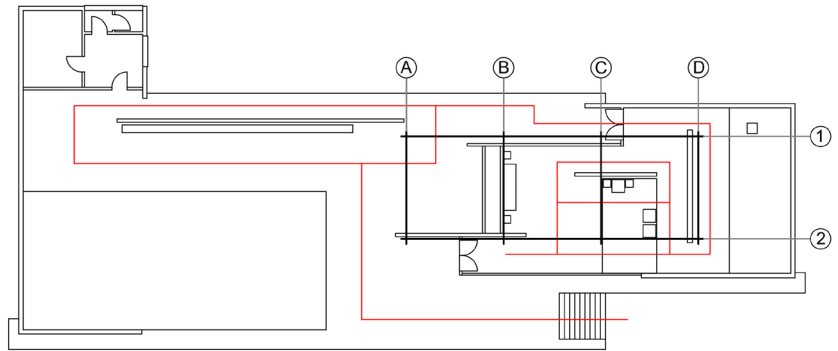
Fall 2018

4 Weeks

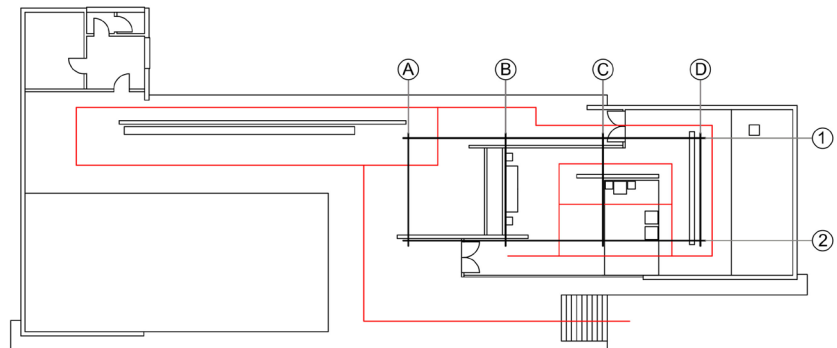
Barcelona Pavillion

Objective

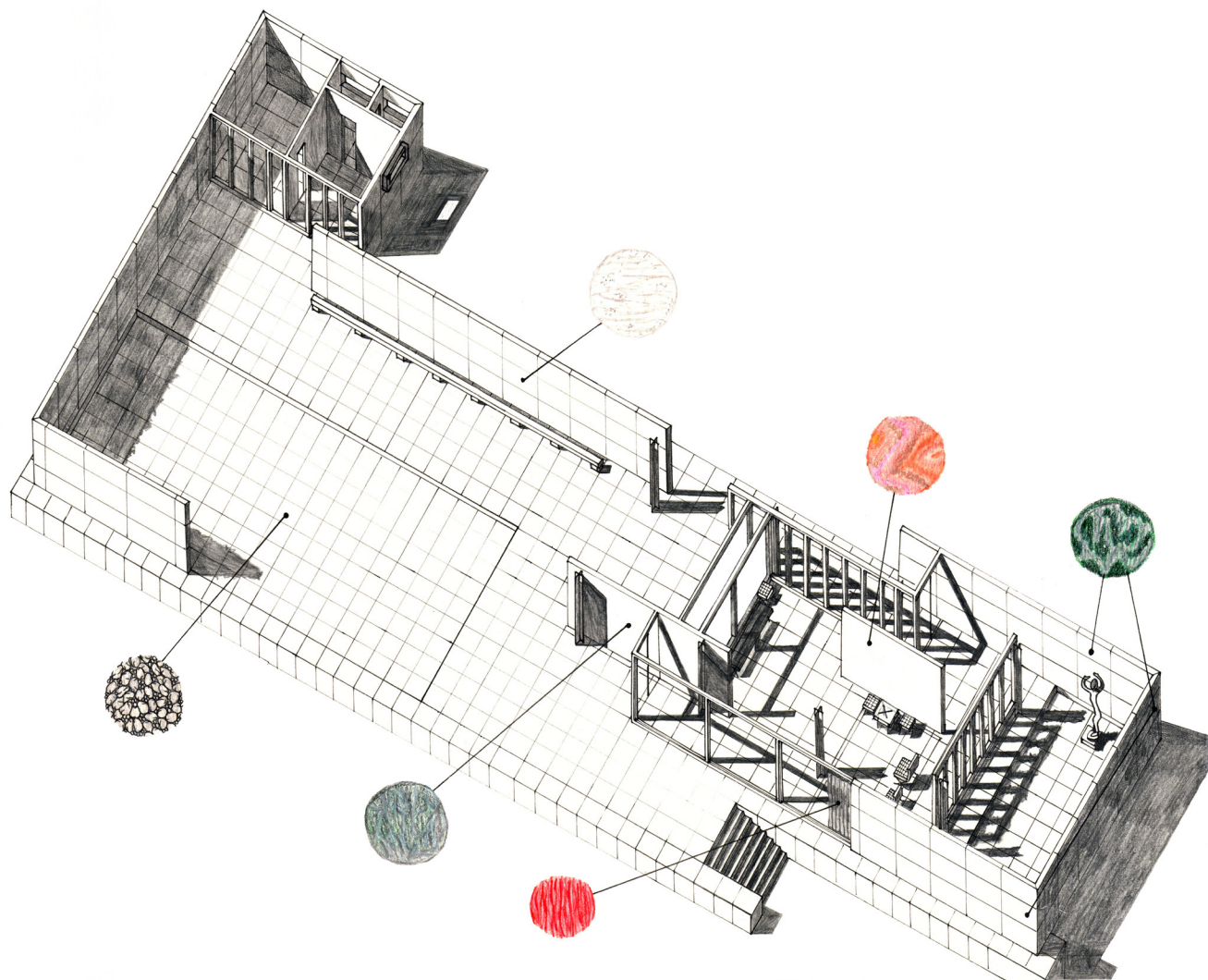
A plan analysis and plan oblique of the Barcelona Pavillion are to be drawn and then drafted in ink.



Circulation / Structural Grid



Lines of Sight / Solid and Void



Plan Oblique

06

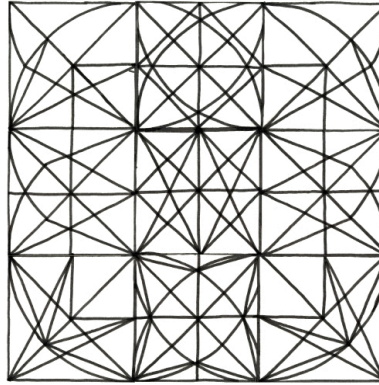
ARCH 1131
Spring 2019
4 Weeks

Assemblage, Hierarchy, & Form

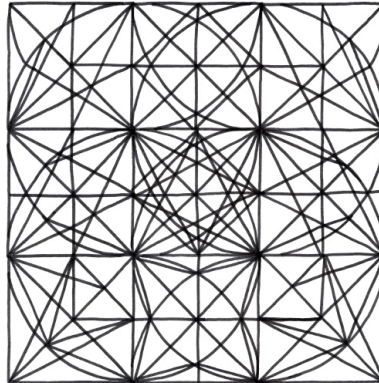
Objective

Create three, two
compositional sequences-
symmetrical and
asymmetrical. Both
sequences are started off
with a 9-square grid. The
following project is **Form**. In
Form, two, three-dimensional
models are to be crafted
based of the drawings.

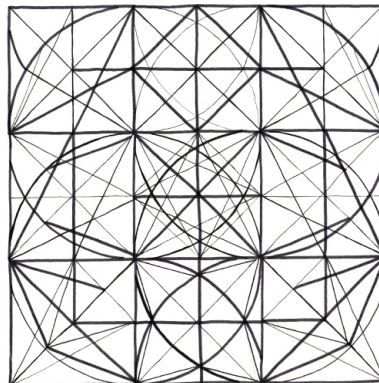
Symmetrical



Collage

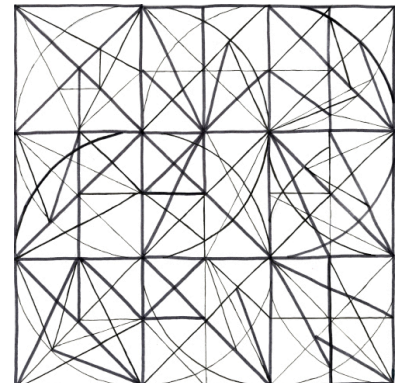
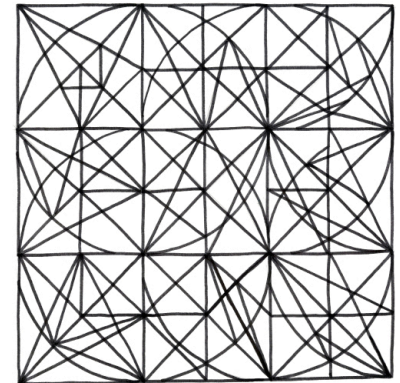
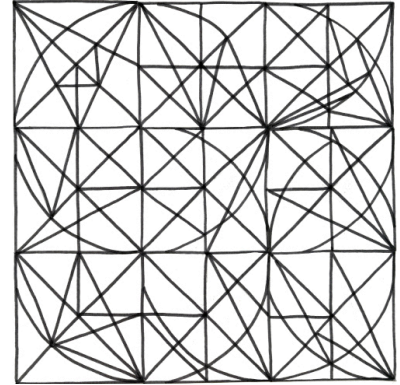


Additional Lines

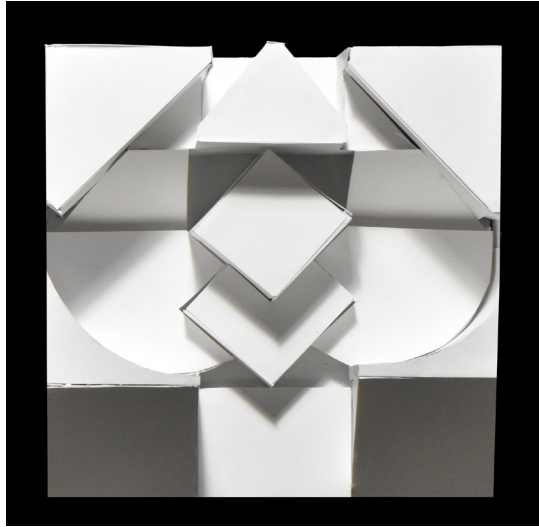


Hierarchy

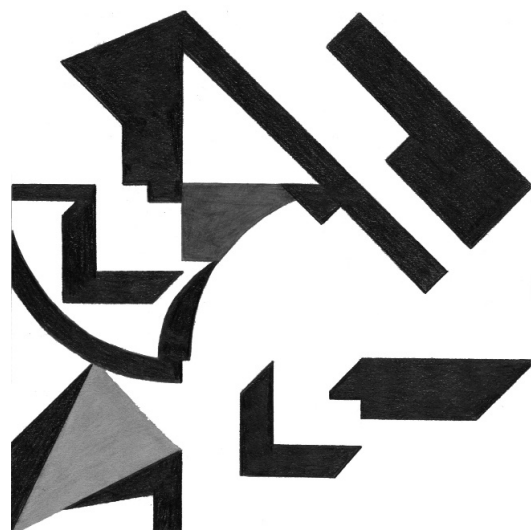
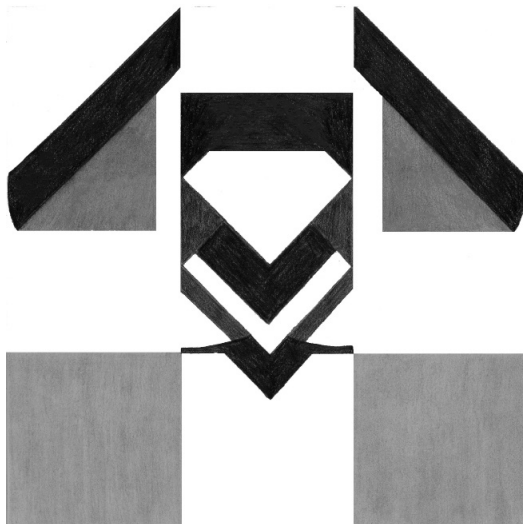
Asymmetrical



Symmetrical



Asymmetrical



08

ARCH 1131
Spring 2019
2 Weeks

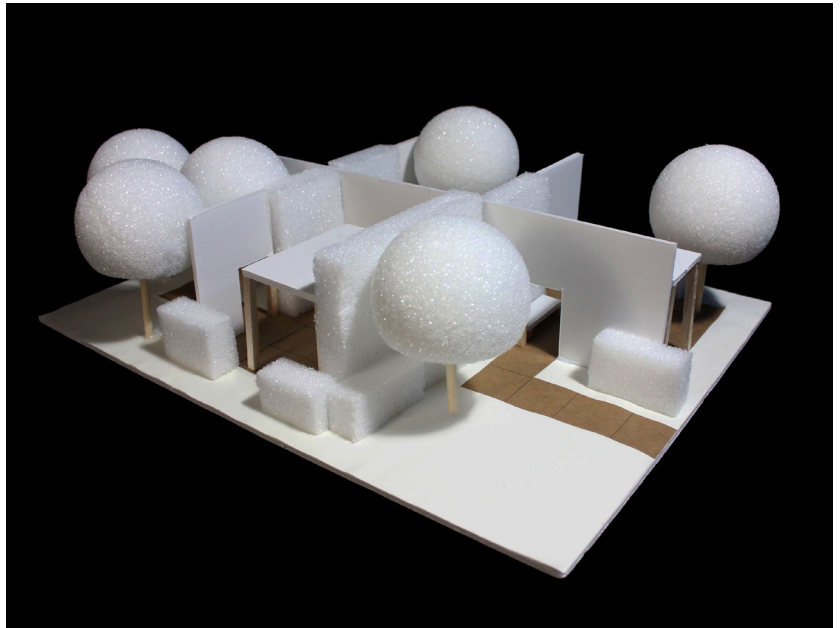
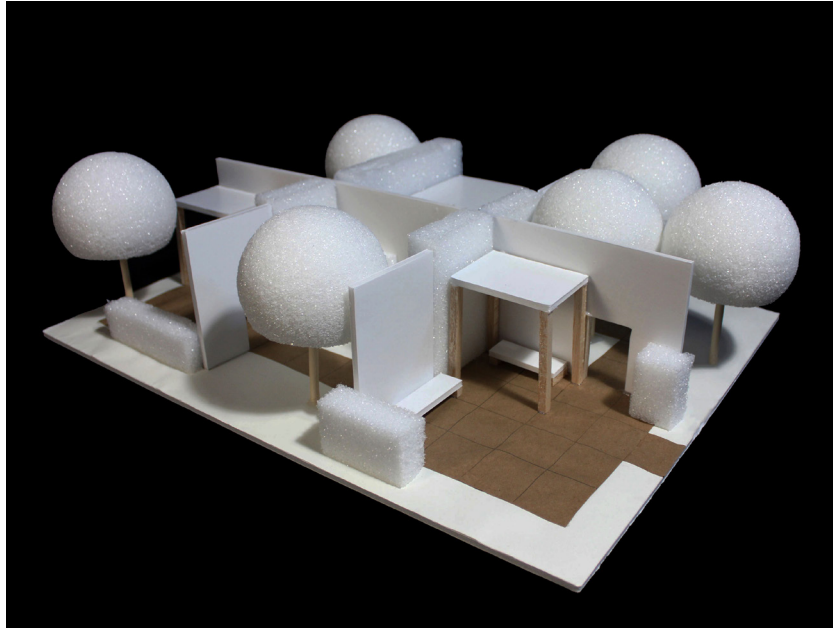
Spatial Sequence

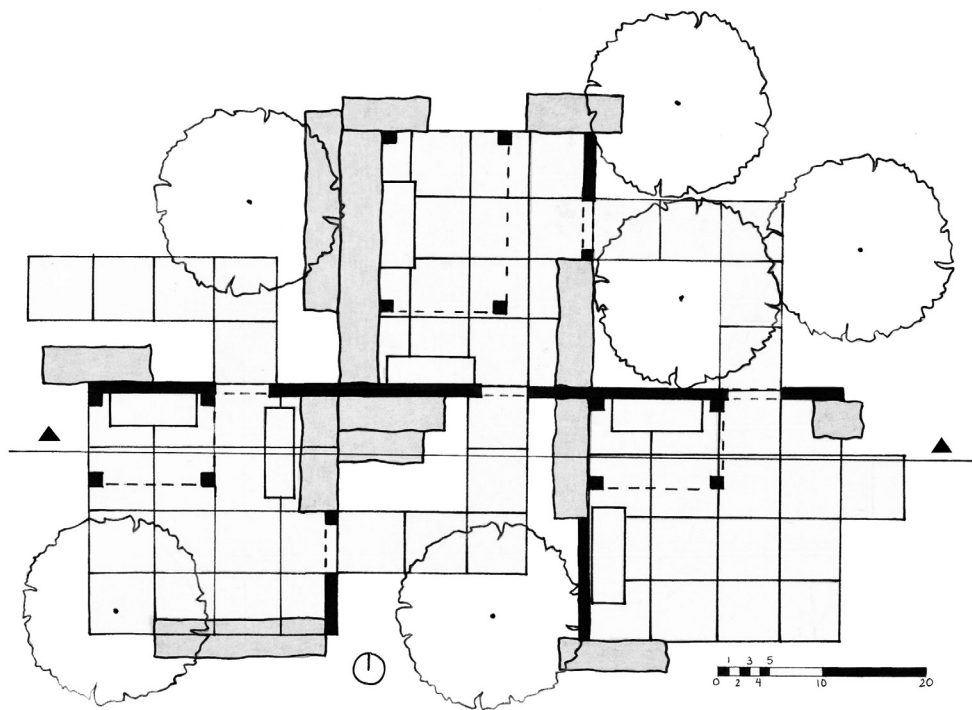
Objective

Design a sequence of three spaces: Spring, Summer, and Fall. Spaces are to be designed using a kit of model pieces.

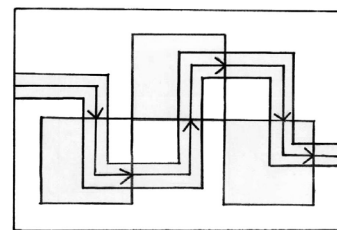
Concept

Revolves around the idea of peace with enclosure. This goal is achieved by creating spaces that focus inward. Heavy enclosure is conveyed by tall walls with no windows or openings, except for entrances/exits, tall hedges, and shading. When exiting the spaces, there is no confusion or hesitation that there are other areas to explore.

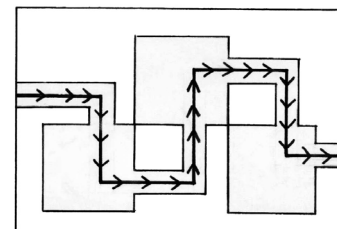




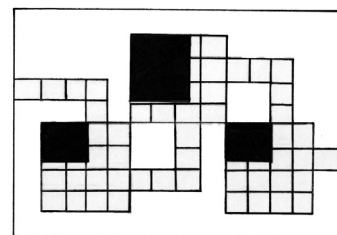
Plan



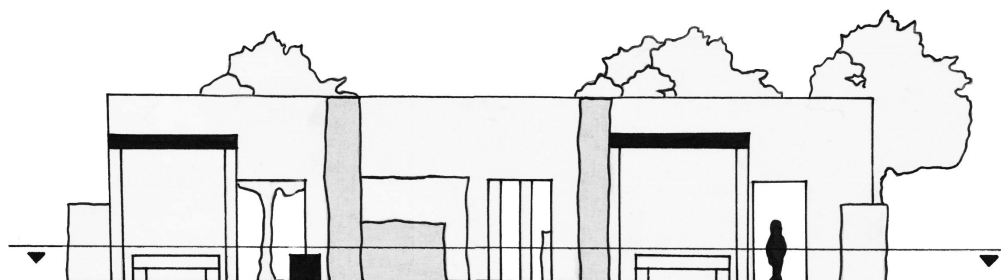
Parti



Circulation



Geometry



Section

10

ARCH 2201

Fall 2019

3 Weeks

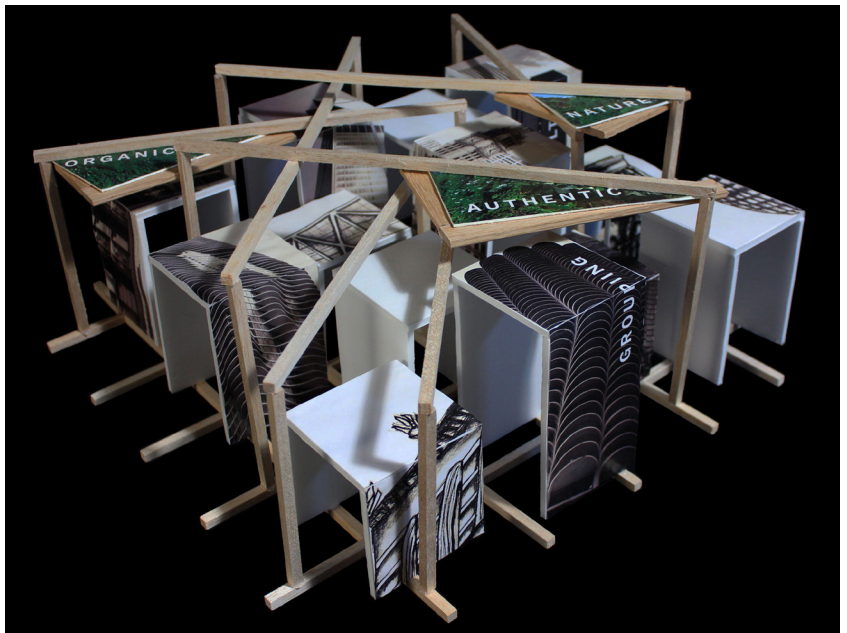
Inspirations Collage

Objective

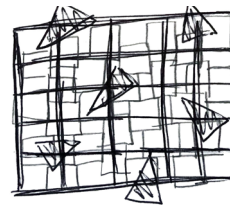
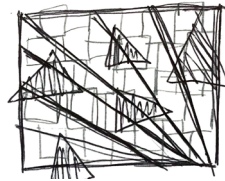
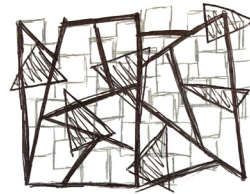
Create a collage of images, drawings, sketches, forms, and text. Composition should have elements that represent an architectural inspiration.

Inspiration

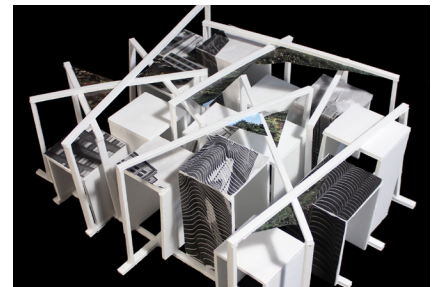
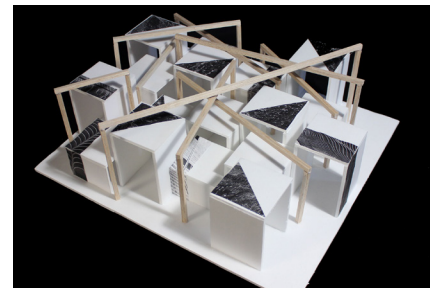
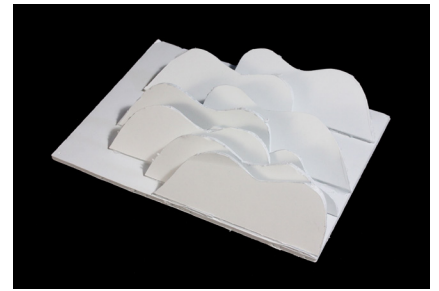
- Hierarchy of skyscrapers of Chicago
- Nature-covered buildings
- Chicago grid system



Process



Grid Sketches



Study Models

12

ARCH 2201

Fall 2019

12 Weeks

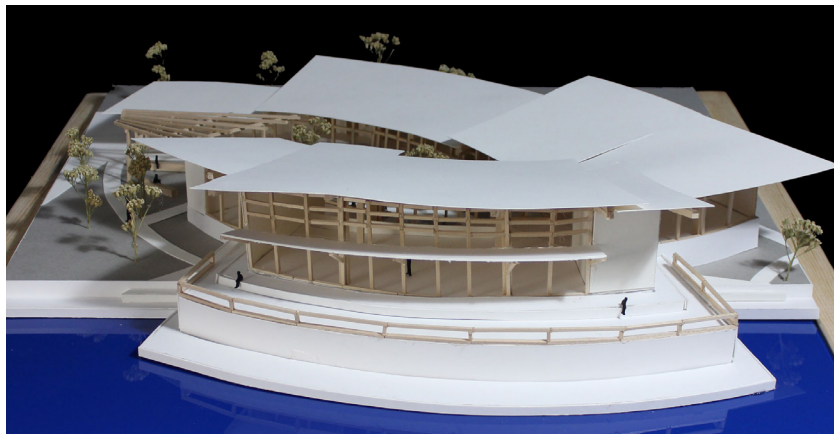
Center for Great Lakes Ecology

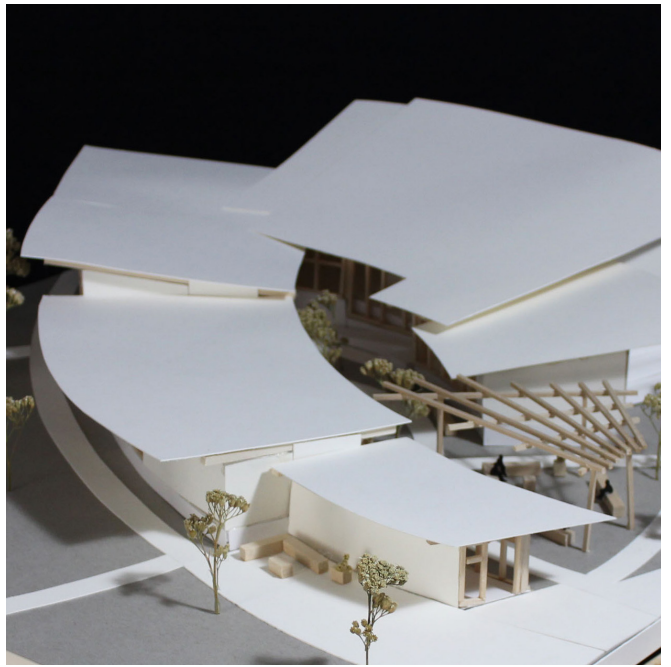
Objective

To design an Ecology Center that is driven by a clearly articulated design concept.

Concept

Nature is an important aspect to life and the world; the world is slowly diminishing its natural world, so surrounding by nature is essential for appreciation.

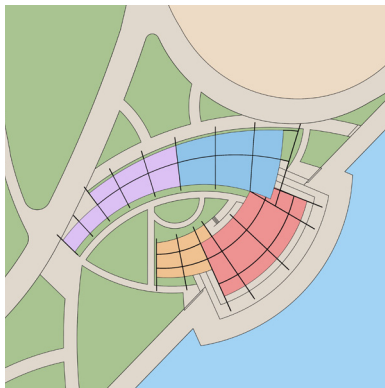




Diagrams



Parti



Structural Grid



Interior Circulation



Exterior Circulation

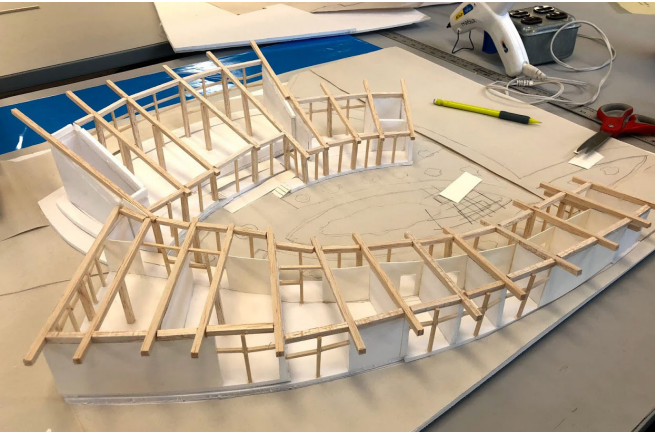
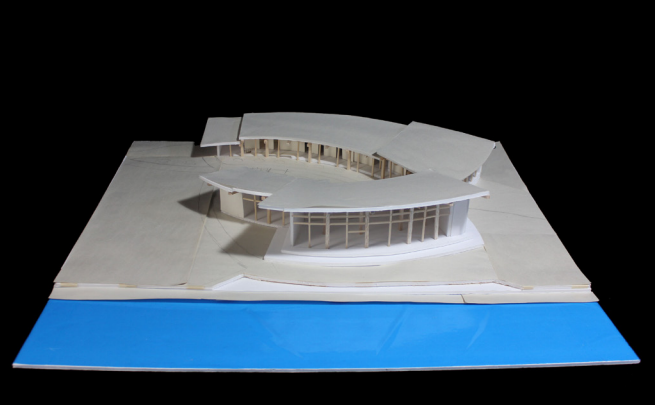


Lines of Sight

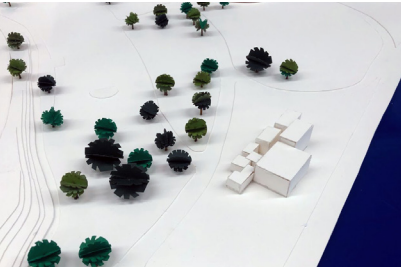


Concept

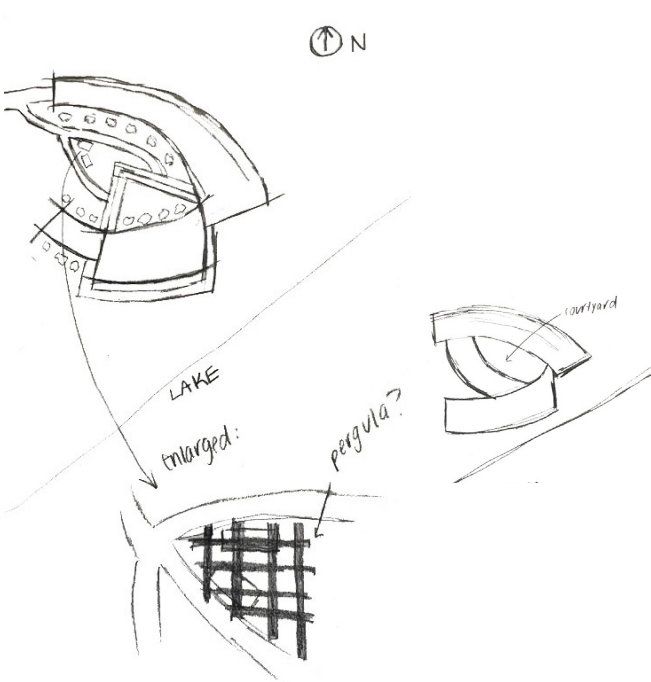
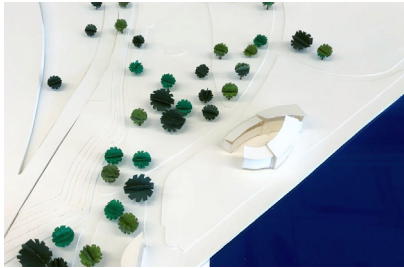
Process



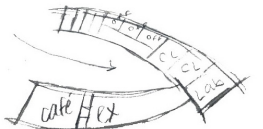
1/8" Scale Study Models



1:30 Scale Study Models

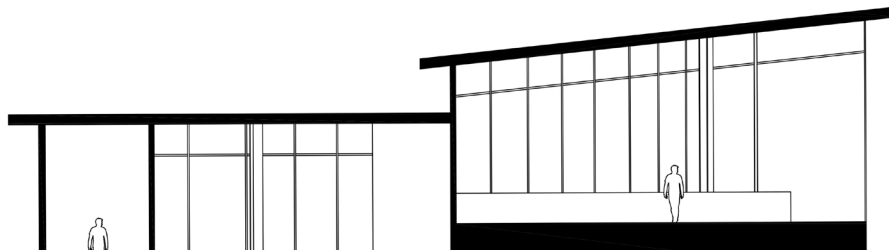


Sketches

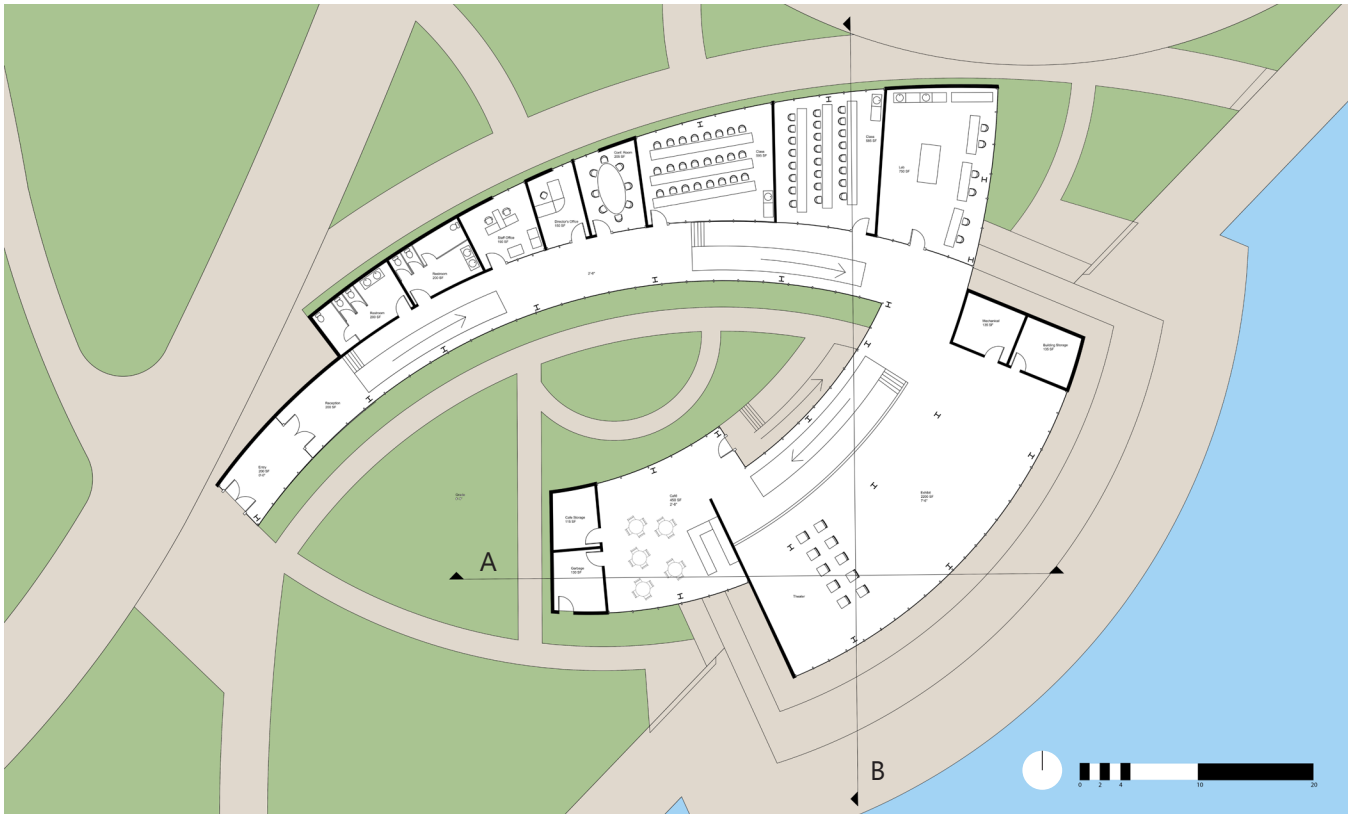




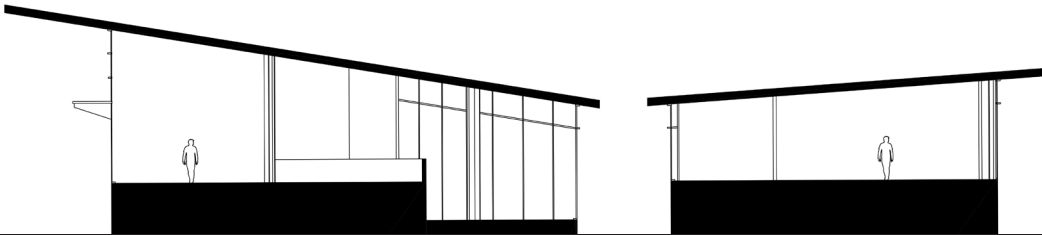
Site Plan



Section A

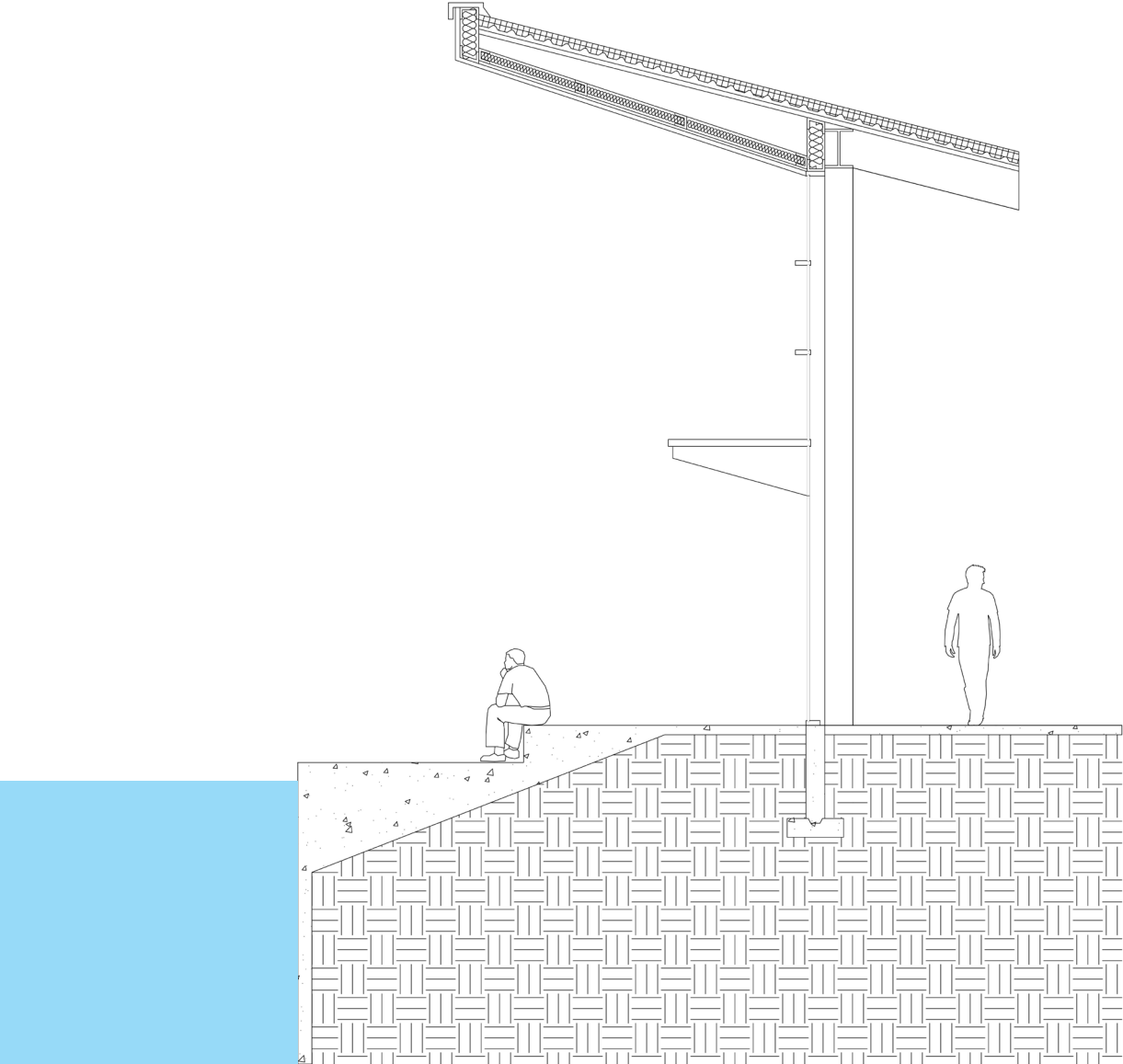


Floor Plan



Section B

Detail



0

2

4

10

20

Detail Model

