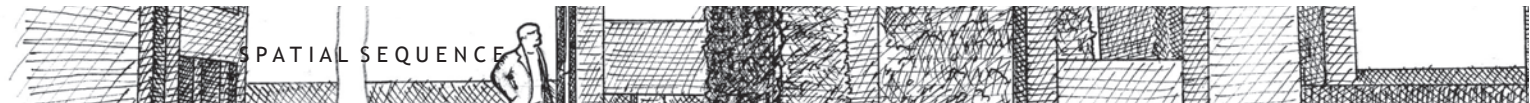


WILL PRESOTT
ARCHITECTURAL PORTFOLIO



PRECEDENT STUDY

ARCH 1100 - SPRING 2010 - 4 WEEKS

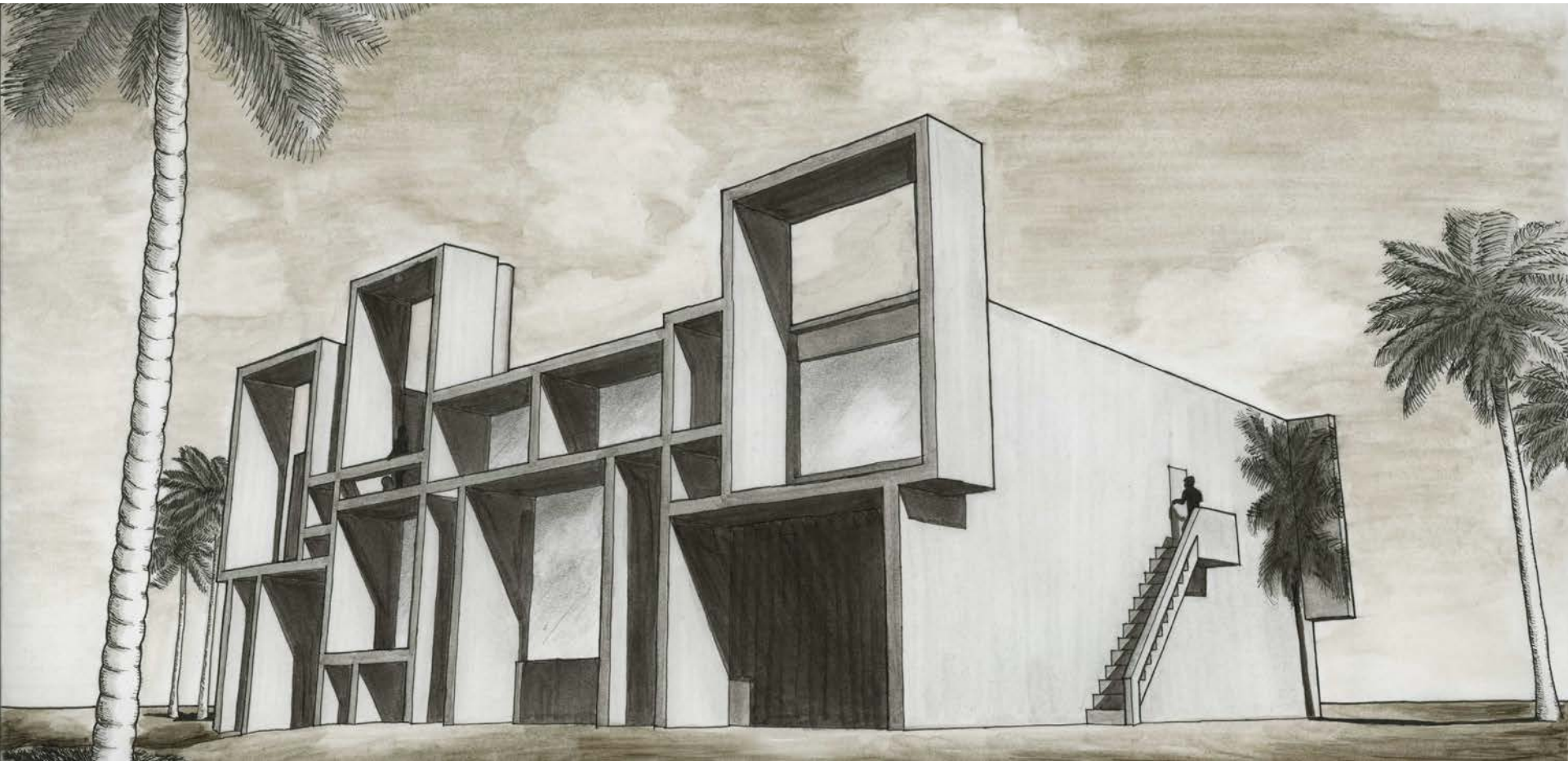
PRECEDENT : MILAM RESIDENCE
PAUL RUDOLPH
PONTE VEDRE , FLORIDA
1959 - 1961



MODEL



SKETCHUP RENDERINGS

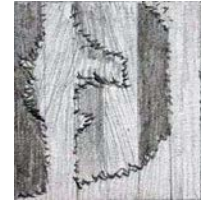


INK RENDERING

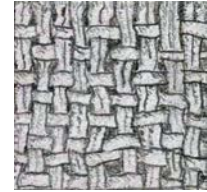
PROJECT OUTLINE : CHOOSE A BUILDING DESIGNED BY A PROMINENT ARCHITECT AND CREATE A MODEL BASED ON PLANS AND PHOTOS FROM RESEARCH. THEN DEVELOP A THREE-DIMENSIONAL COMPUTER MODEL WITH GOOGLE SKETCHUP TO COMPOSE THREE DIGITAL VIGNETTES AND A HAND RENDERING

TEXTURE DRAWING

ARCH 1121 - SPRING 2010 - 1 1/2 WEEKS



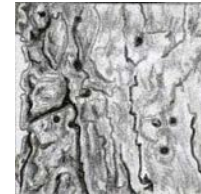
CARDBOARD



FABRIC



BALSA



BARK

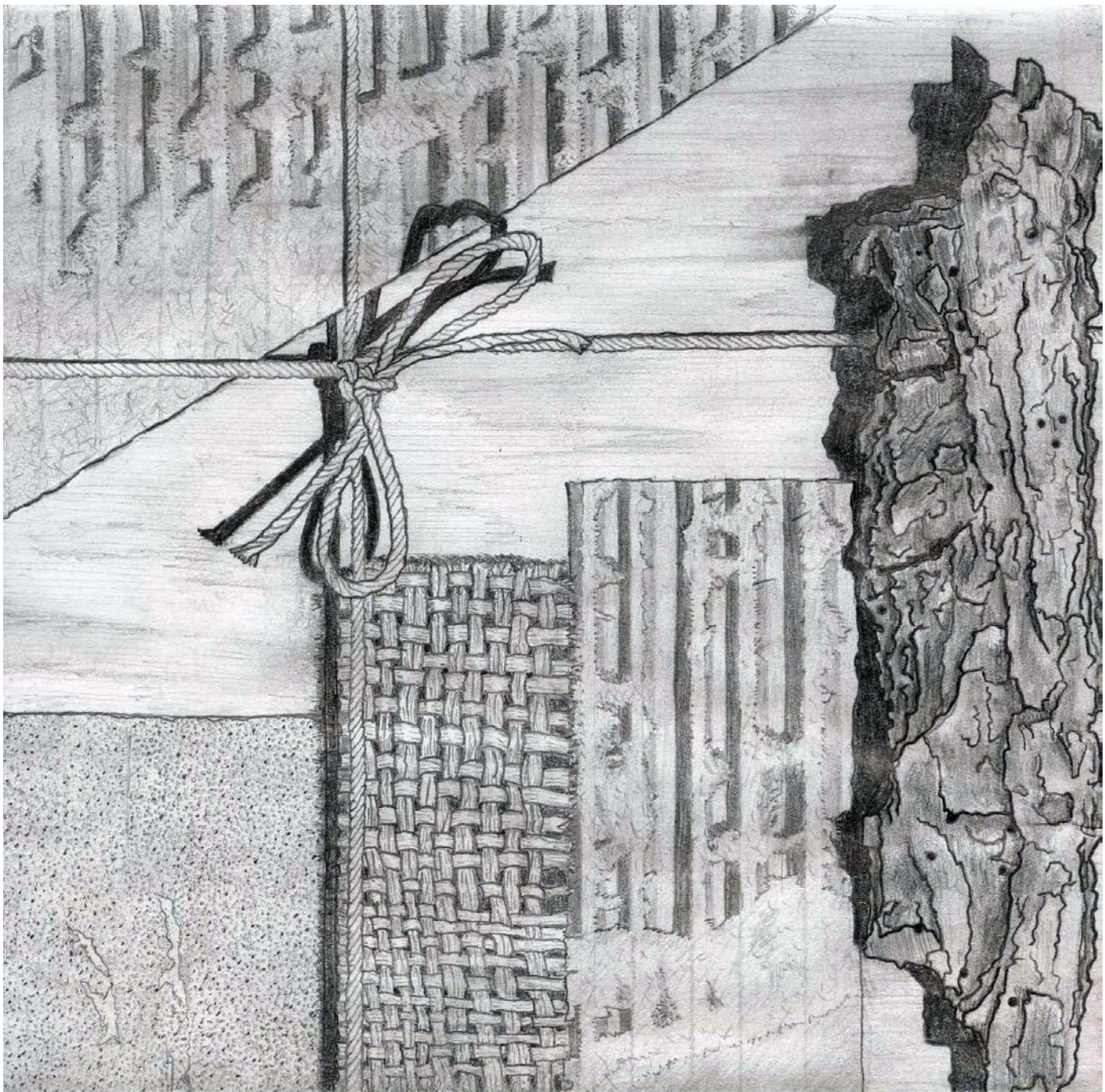


SANDPAPER



STRING

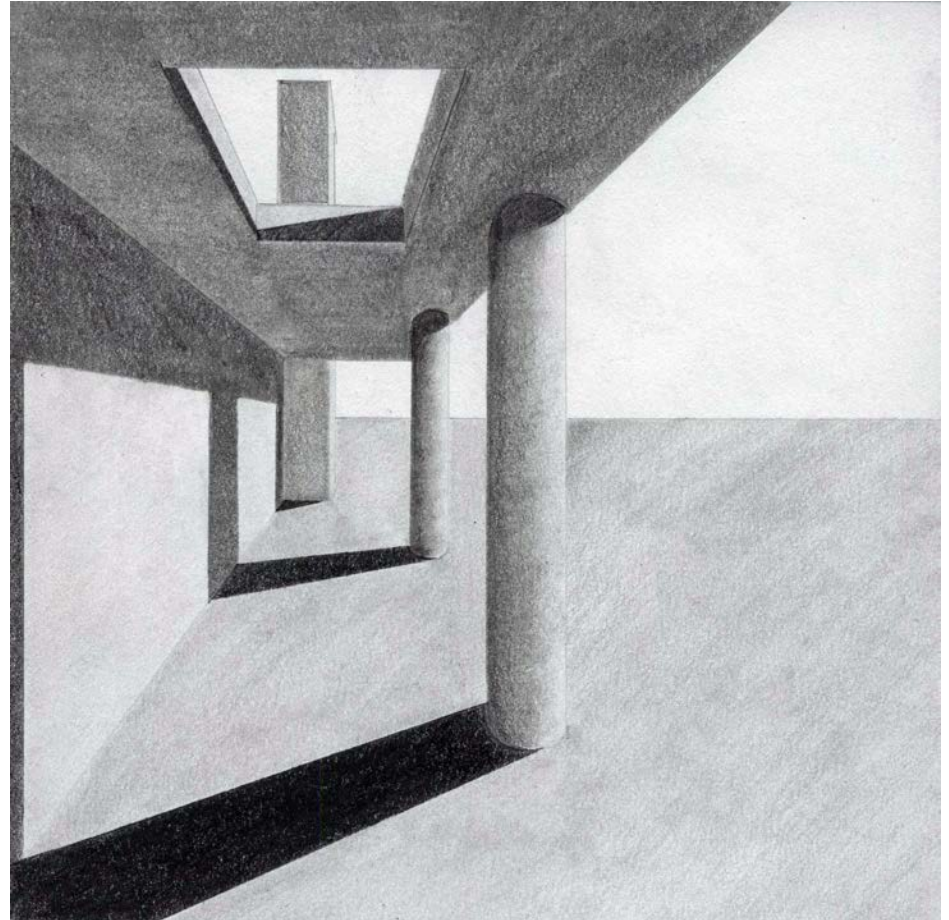
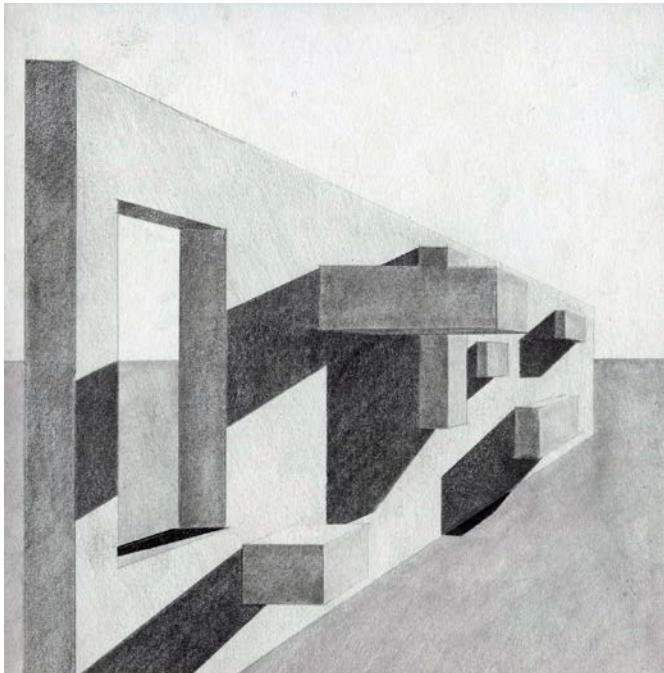
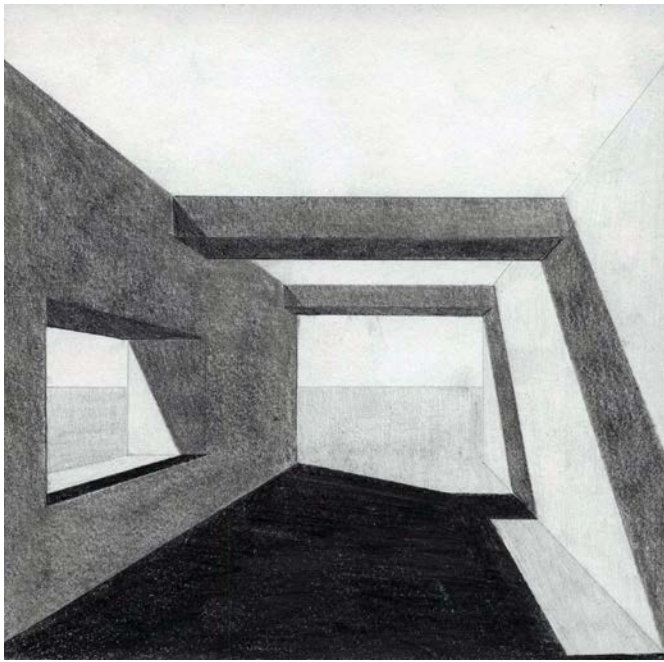
PROJECT OUTLINE : ORGANIZE A COMPOSITION OF MATERIALS WITH A UNIFYING THEME AND HAND RENDER THE COLLAGE TO CREATE AN ACCURATE REPRESENTATION OF TEXTURE

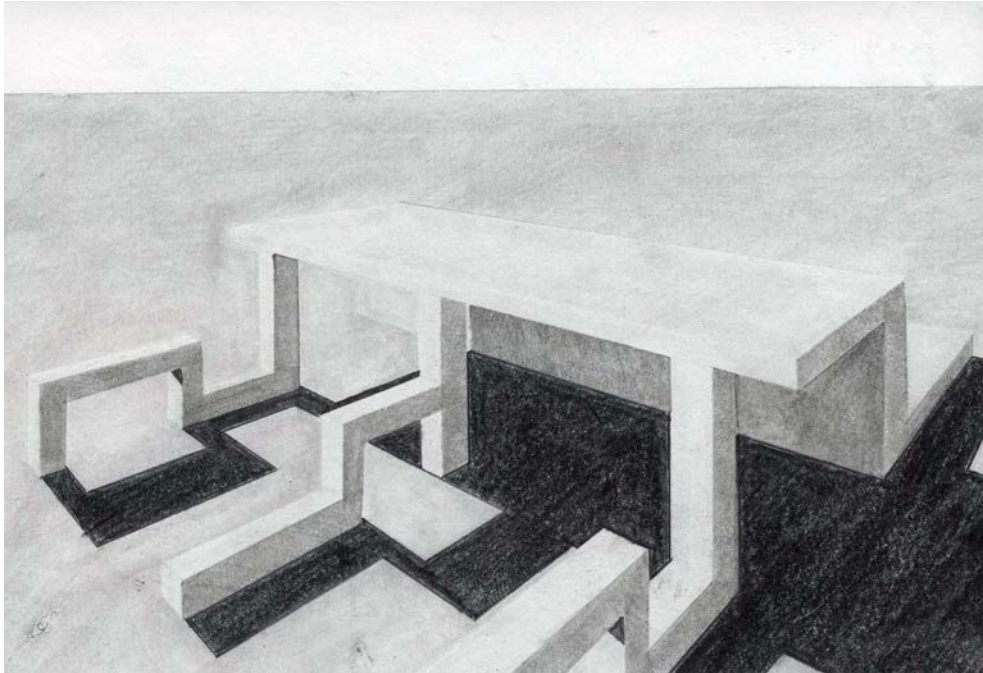


PENCIL RENDERING

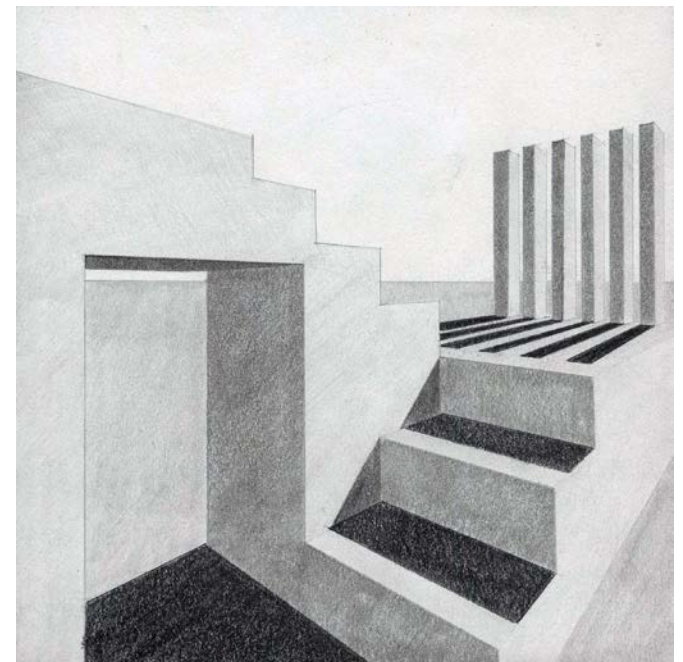
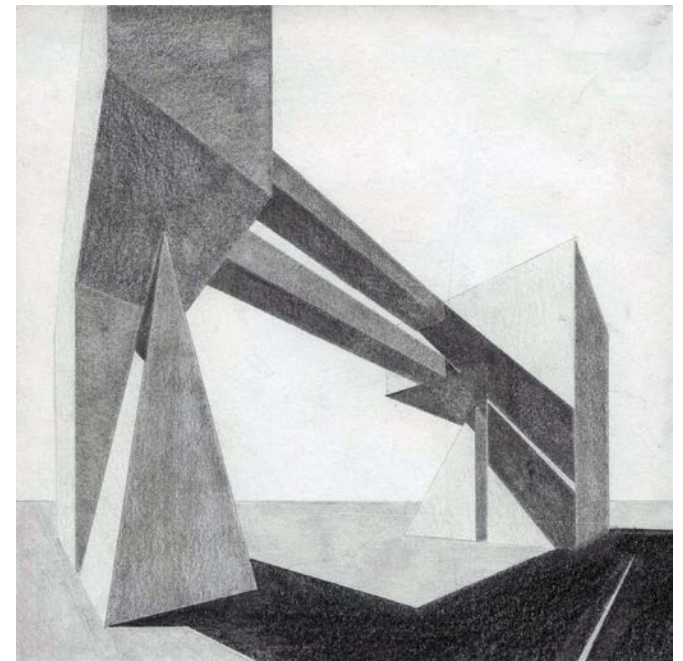
PERSPECTIVE JOURNEY

ARCH 1121 - SPRING 2010 - 3 WEEKS





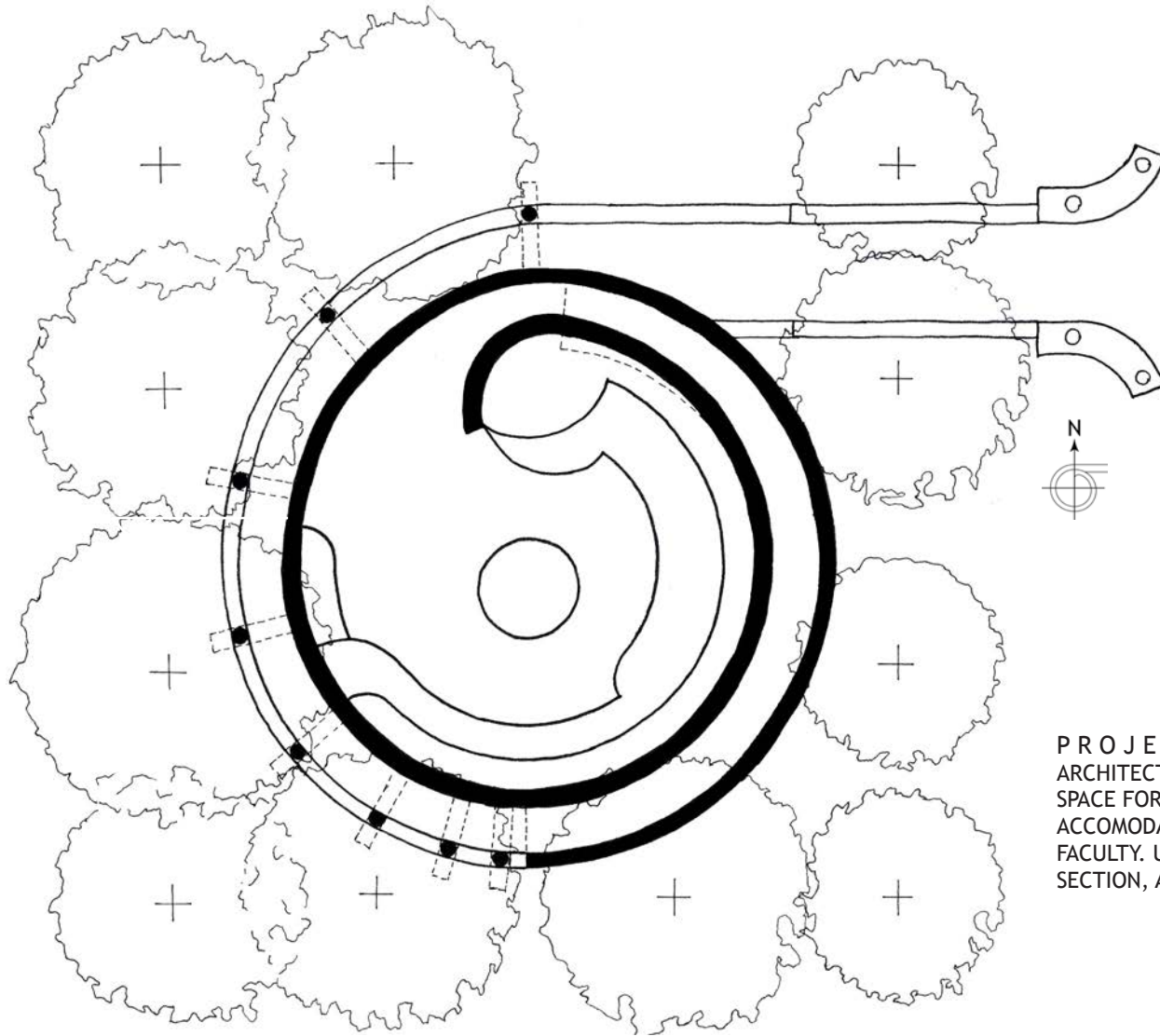
PROJECT OUTLINE : DEVELOP REALISTIC THREE-DIMENSIONAL SPACES MADE UP OF SIMPLE GEOMETRIC FORMS USING ONE AND TWO POINT PERSPECTIVES



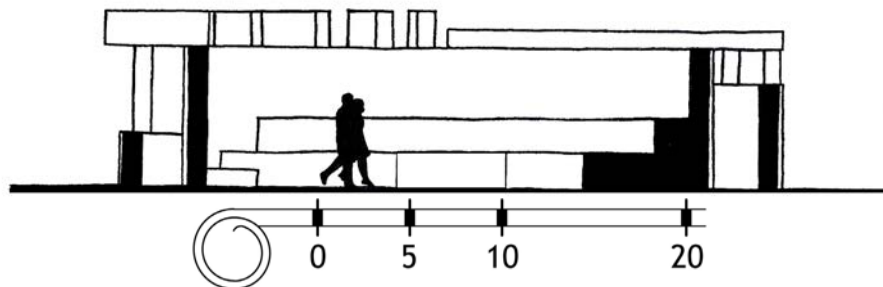
COMMUNITY GATHERING SPACE

ARCH 1131 - SUMMER 2010 - 1 1/2 WEEKS





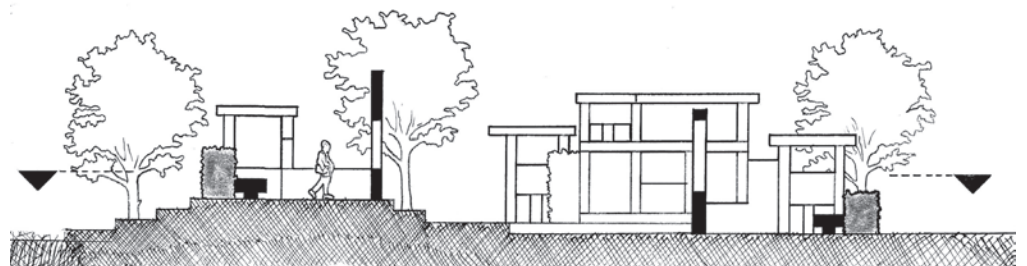
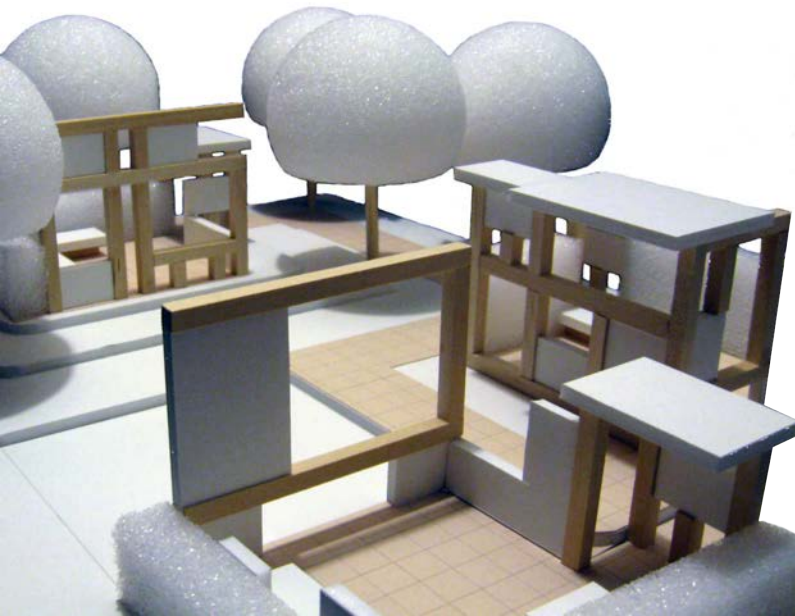
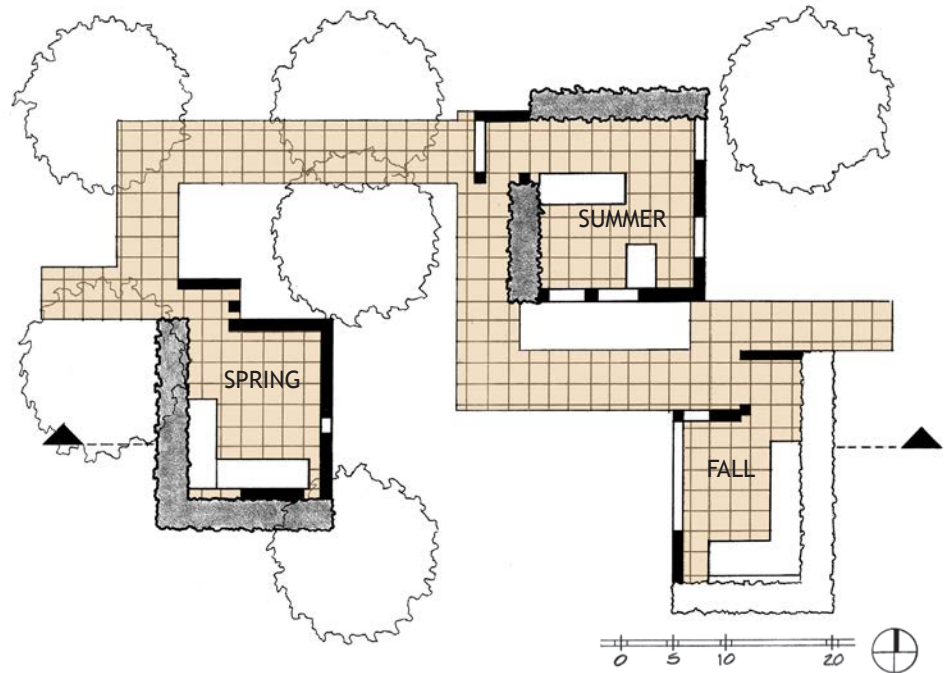
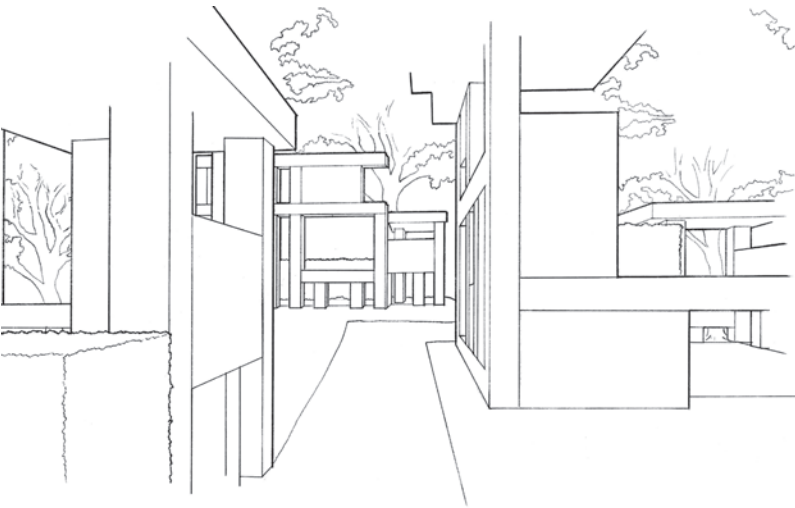
PROJECT OUTLINE : UTILIZING BASIC ARCHITECTURAL FORMS, DESIGN AN OUTDOOR GATHERING SPACE FOR AN ACTIVE COLLEGE CAMPUS MADE TO ACCOMODATE VARIOUS SIZED GROUPS OF STUDENTS AND FACULTY. USE RENDERING SKILLS TO HAND DRAFT A PLAN, SECTION, AND ORTHOGRAPHIC DRAWING



C O N C E P T : A QUIET, SECLUDED SPACE THAT SEPARATE THE PEDESTRIAN FROM THE FAST PACE AND STRESS OF SCHOOL LIFE BY STEERING THEM DOWN A SPIRALLING AND CONSTRICTING PATH, GRADUALLY REMOVING THEM FROM THE SURROUNDING SITE UNTIL THE PEACEFUL CENTER IS REACHED

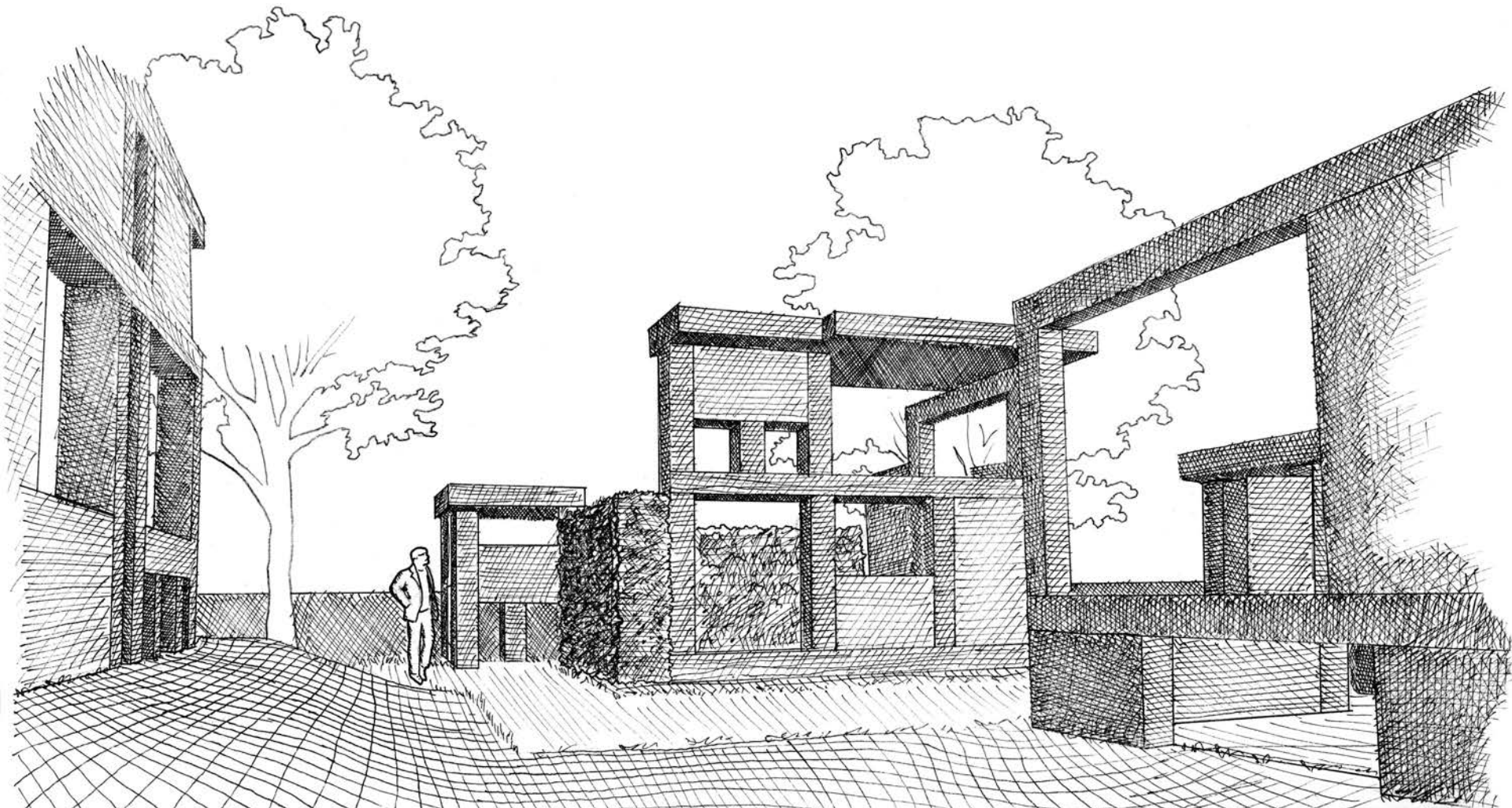
SPATIAL SEQUENCE

ARCH 1131 - SUMMER 2010 - 11/2 WEEKS



PROJECT OUTLINE : WHILE RESTRICTED TO A KIT OF PARTS, CREATE AN OUTDOOR SPACE COMPOSED OF THREE AREAS SPECIFICALLY DESIGNED FOR THE SPRING, SUMMER, AND FALL

CONCEPT : THREE DISTINCT FACADES, INSPIRED BY DE STIJL ARTWORK TO REINFORCE THE KIT OF PARTS' NATURAL GEOMETRY, CREATE A SPACE WHERE SIMPLICITY OF FORM ENCOURAGES HARMONY AND RELAXATION. THE DENSITY OR POROSITY OF EACH FACADE RESPONDS TO THE DESIRED AMOUNT OF SHADE FOR EACH SEASON



CHICAGO VISITOR'S CENTER PAVILION

ARCH 2201 - FALL 2010 - 10 WEEKS

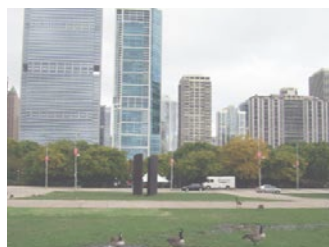


PROJECT OUTLINE : DESIGN A PAVILION FOR THE WELCOMING OF TOURISTS AS WELL AS RESIDENTS TO THE CITY OF CHICAGO. DEVELOP A CLEAR CONCEPT AND CONNECT THE DESIGN TO ONE OF THREE GIVEN SITES ADJACENT TO MILLENIUM PARK. DESIGN MUST INCLUDE A VISITOR'S CENTER, CAFE, GALLERY, AND PERFORMANCE SPACE

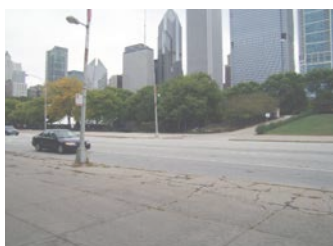
SITE ANALYSIS



VIEW 1



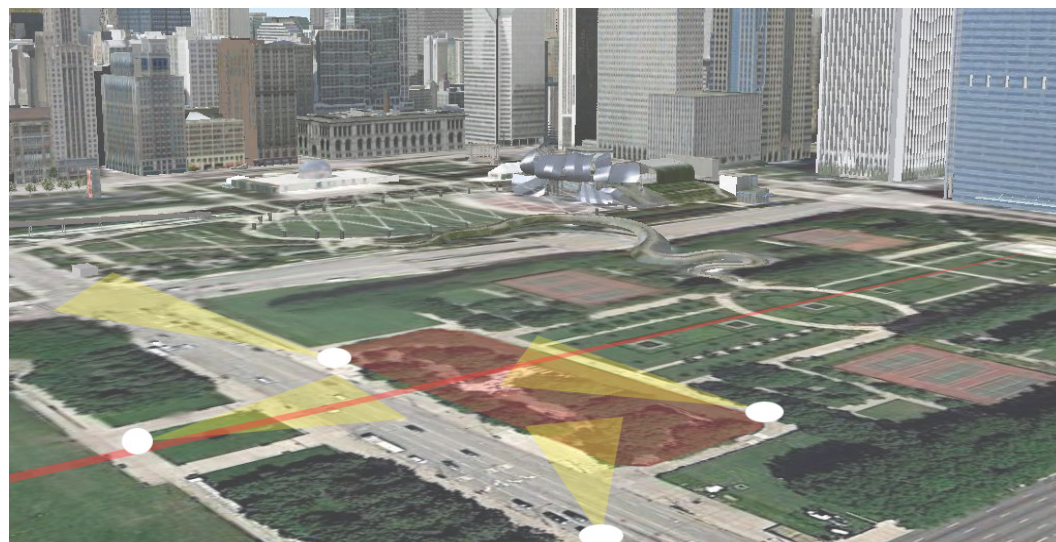
VIEW 2



VIEW 3



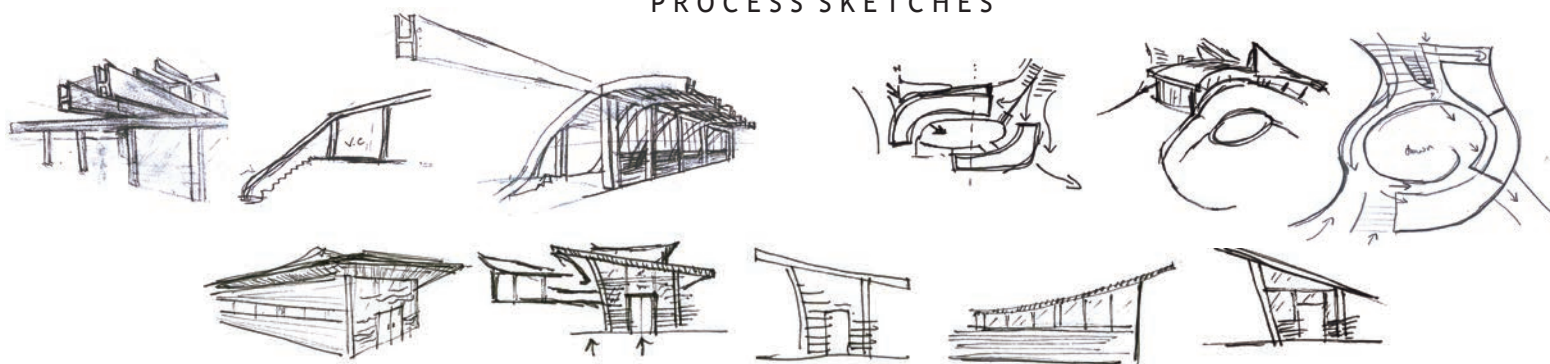
VIEW 4



SITE PLAN WITH CENTRAL AXIS AND LINES OF SIGHT

SITE : LOCATED ALONG CHICAGO'S LAKEFRONT JUST STEPS AWAY FROM THE ART INSTITUTE AND MILLENIUM PARK, THE SITE LIES ON A CENTRAL AXIS THAT LAYS OUT GRANT PARK FROM DALEY BICENTENNIAL PLAZA TO BUCKINGHAM FOUNTAIN. A 14' GRADE CHANGE FROM MONROE ST. TO THE UPPER SIDEWALK DOMINATES THE SITE ALONG WITH A ROW OF TREES ALONG THE SOUTH SIDEWALK

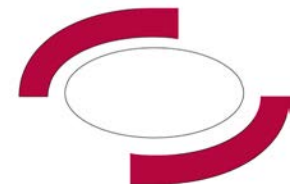
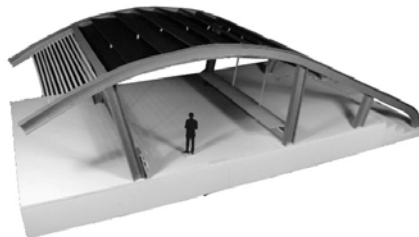
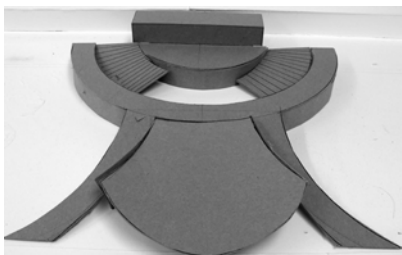
PROCESS SKETCHES



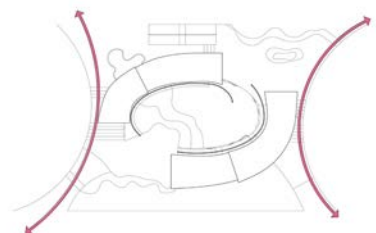


CONCEPT : A CENTRAL PERFORMANCE SPACE VISIBLE THROUGHOUT MUCH OF THE SITE THAT IS BORDERED BY TWO IDENTICAL SPACES AND MIRRORED PATHS OF CIRCULATION, REFLECTING THE SYMMETRY OF THE SITE. AS A RESPONSE TO THE ABRUPT HEIGHT CHANGES OF THE PARK, “WAVES” OF CIRCULATION ARE INTRODUCED TO EMPHASIZE THE GRADATIONS

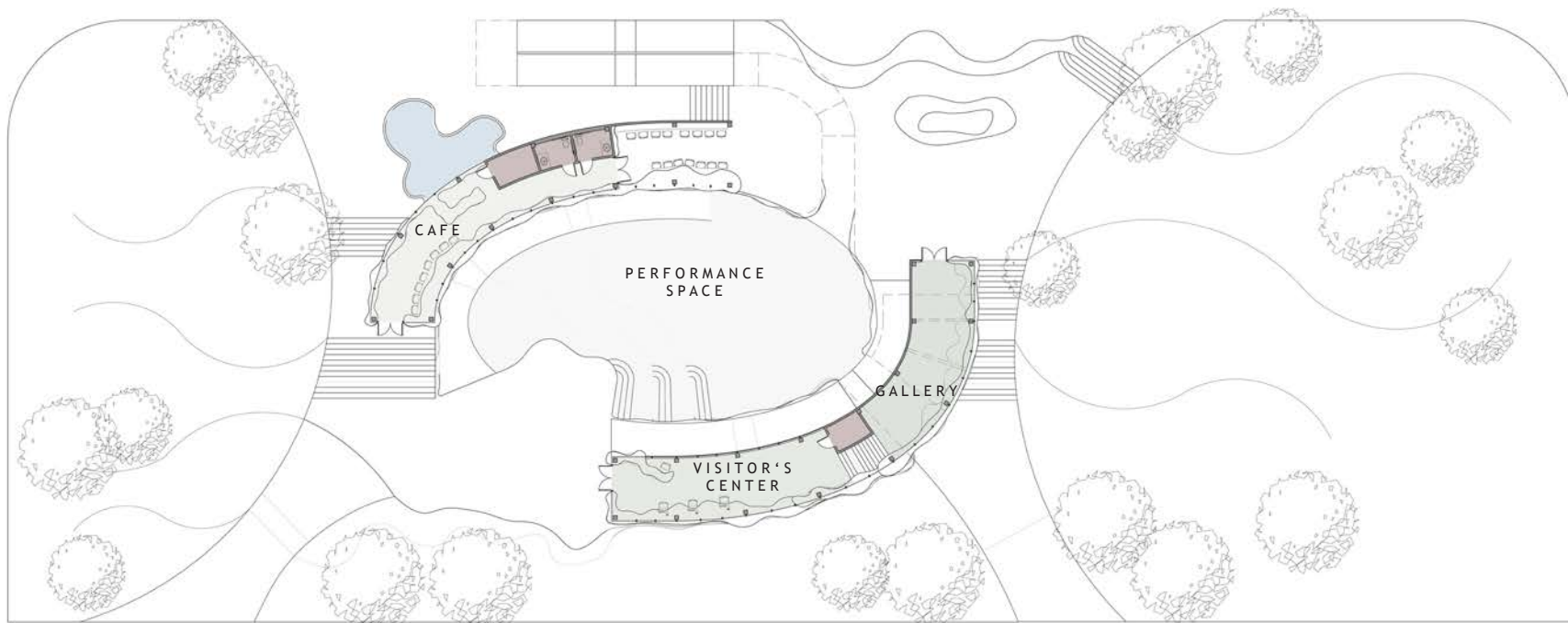
PROCESS MODELS



PART I



CIRCULATION



PAVILION PLAN

PAVILION SECTION

