

# Anthony Paletti | Portfolio



# Texture Collage

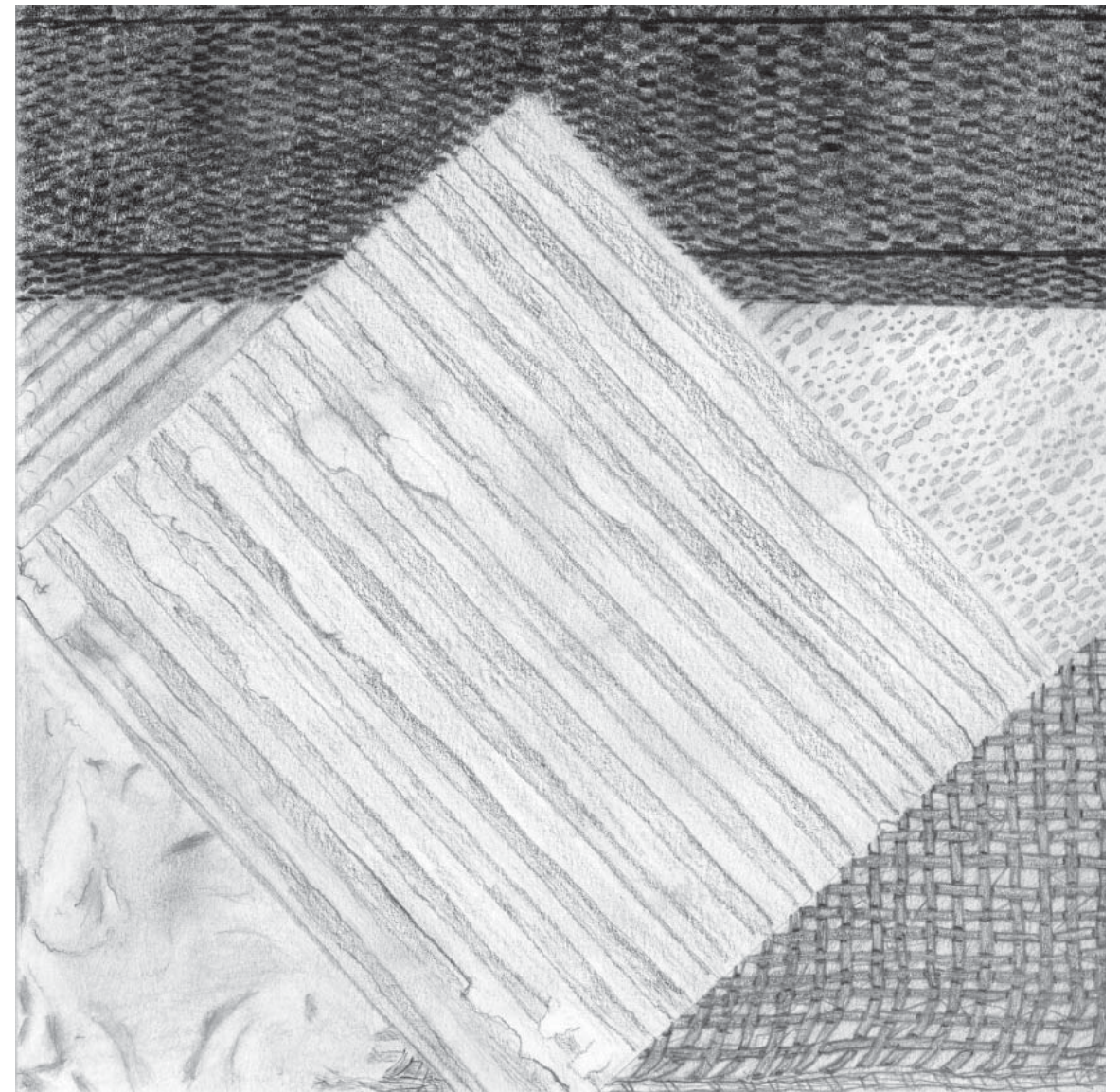
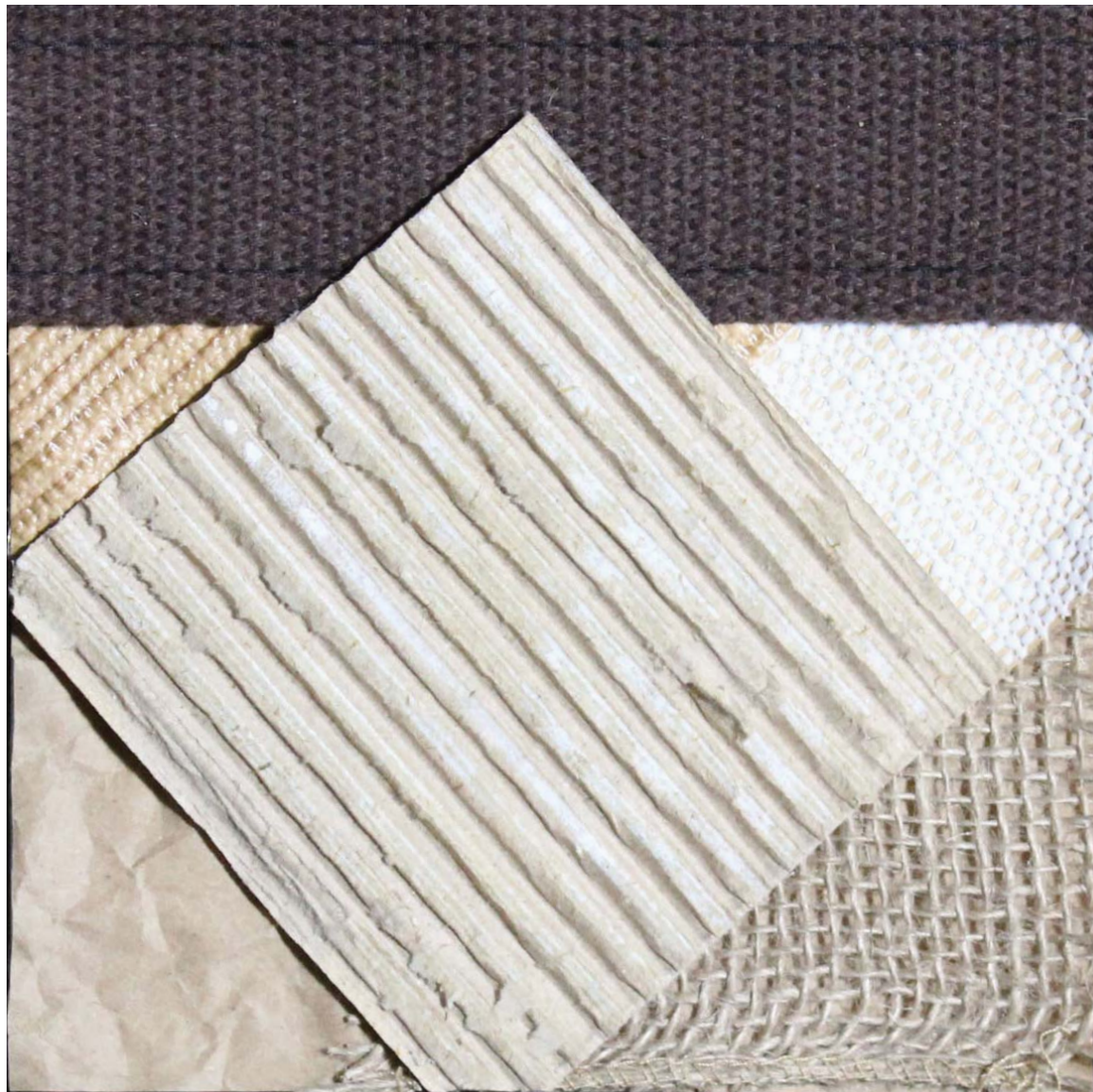
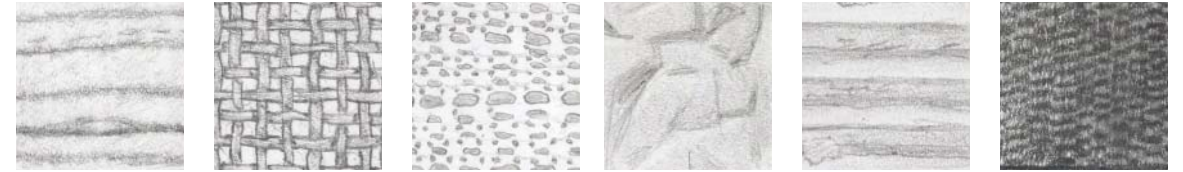
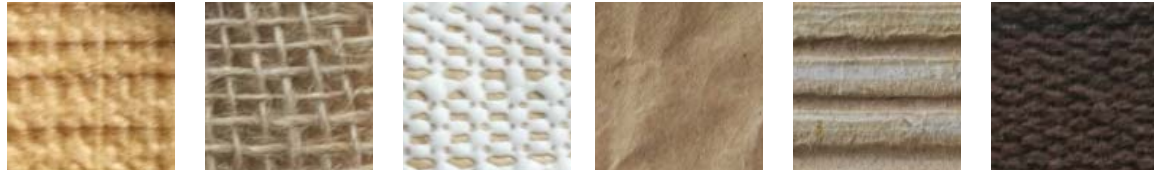
ARCH - 1121

Architectural Design Communication

Spring Semester 1

One Week

Objective: Create a collage of materials using different organizational techniques on a 6" x 6" panel. Then, recreate the textured collage through pencil drawing.





# Perspective Journey

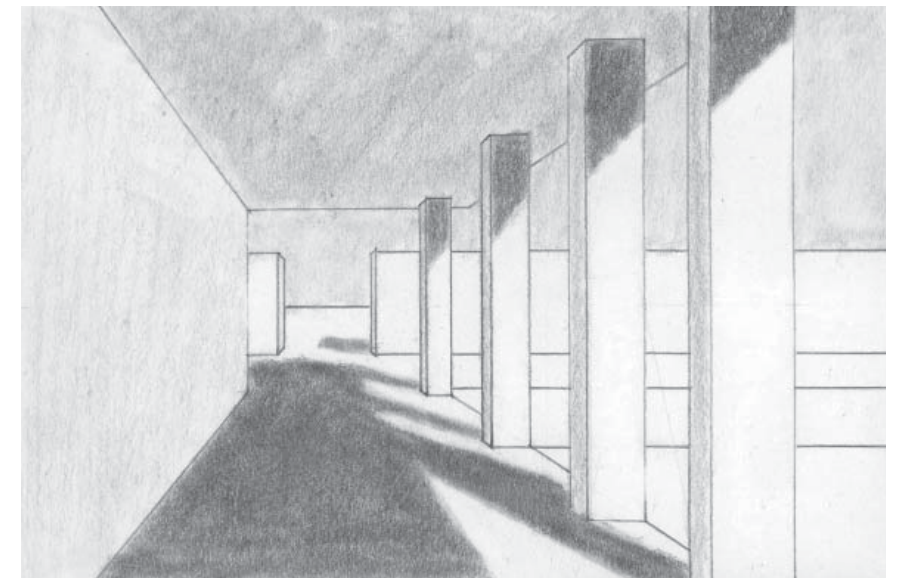
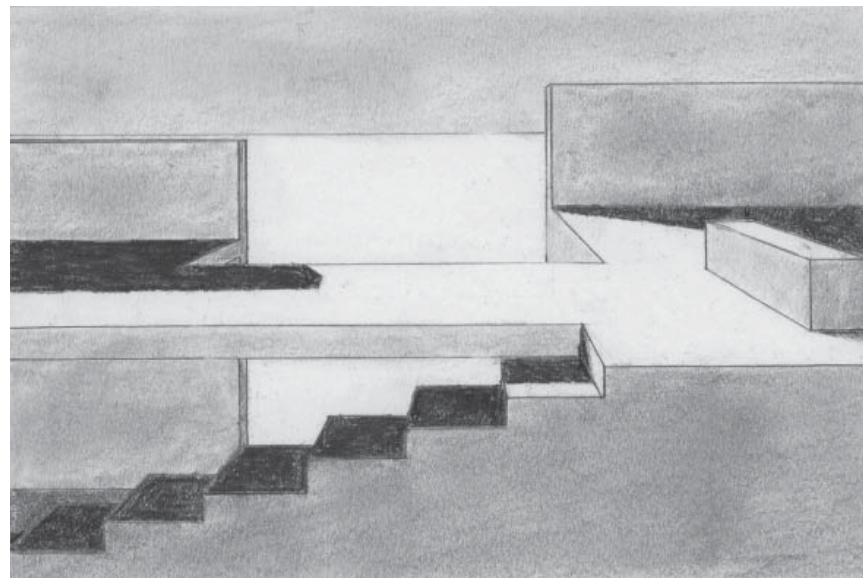
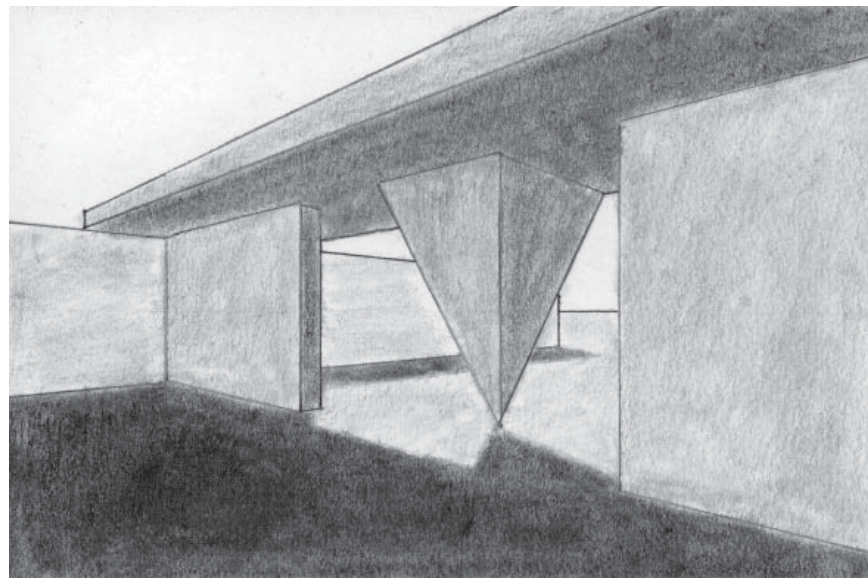
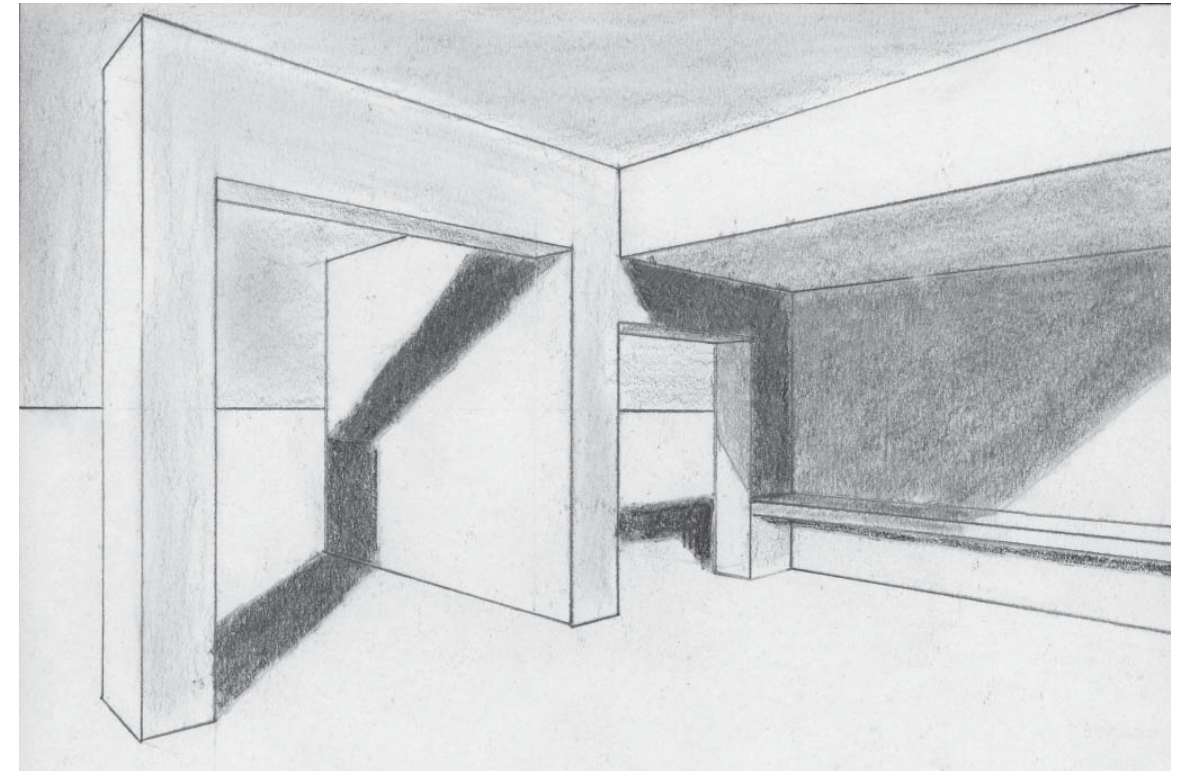
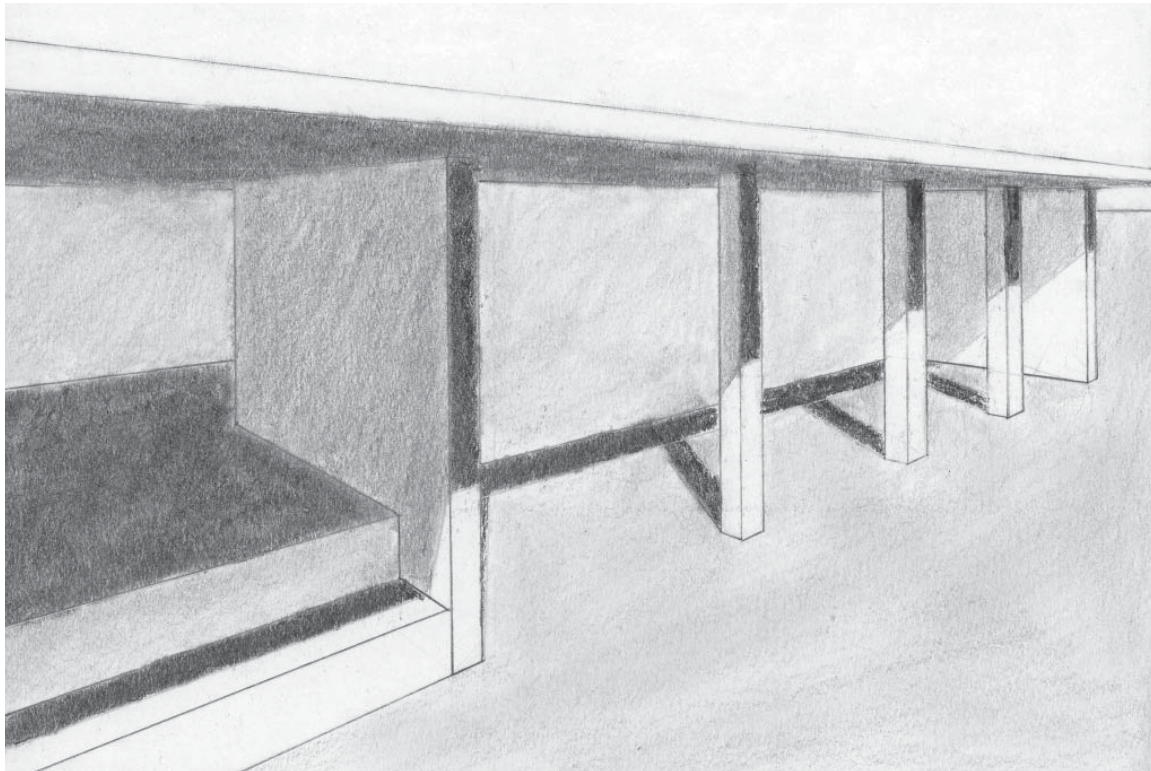
ARCH - 1121

Architectural Design Communication

Spring Semester 1

Two Weeks

Objective: Create a cohesive series of perspective drawings using simple geometric forms with shade and shadow.





# Assemblage and Hierarchy

ARCH - 1131

Introduction to Architectural Design

Summer Semester 1

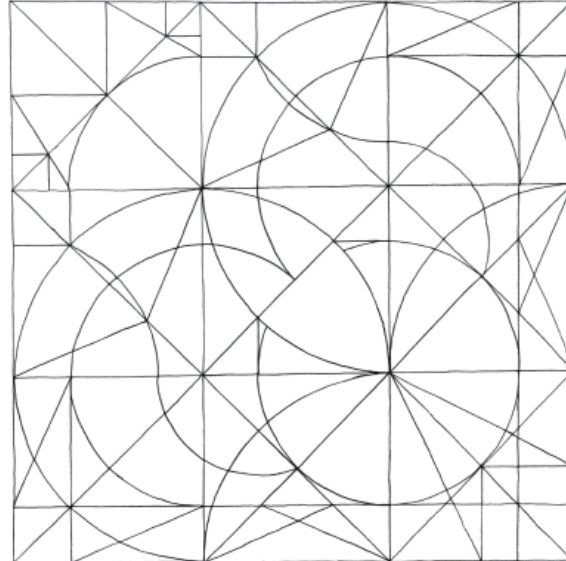
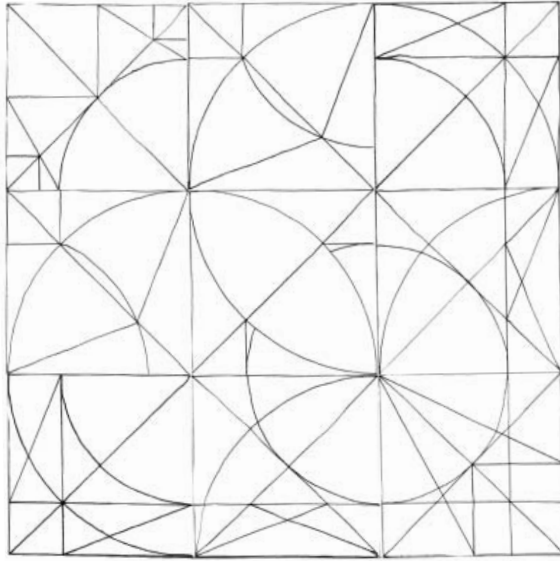
One Week

Objective: Design a series of 3" x 3" tiles based on a set of rules and requirements. These tiles will then be arranged to create both a symmetric and asymmetric 9" x 9" composition.

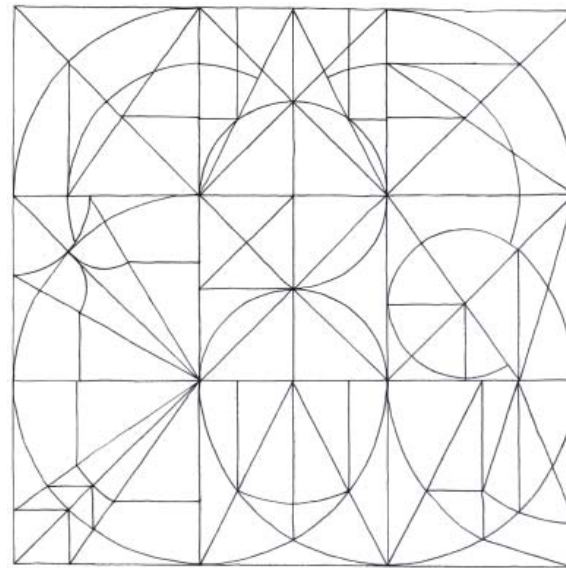
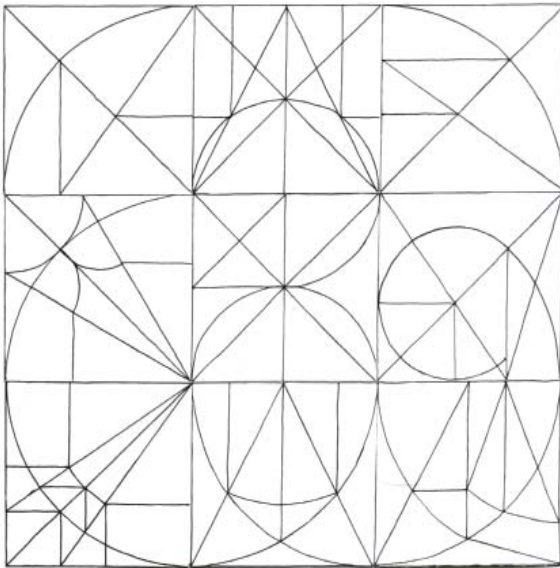
Collage

Additional Lines

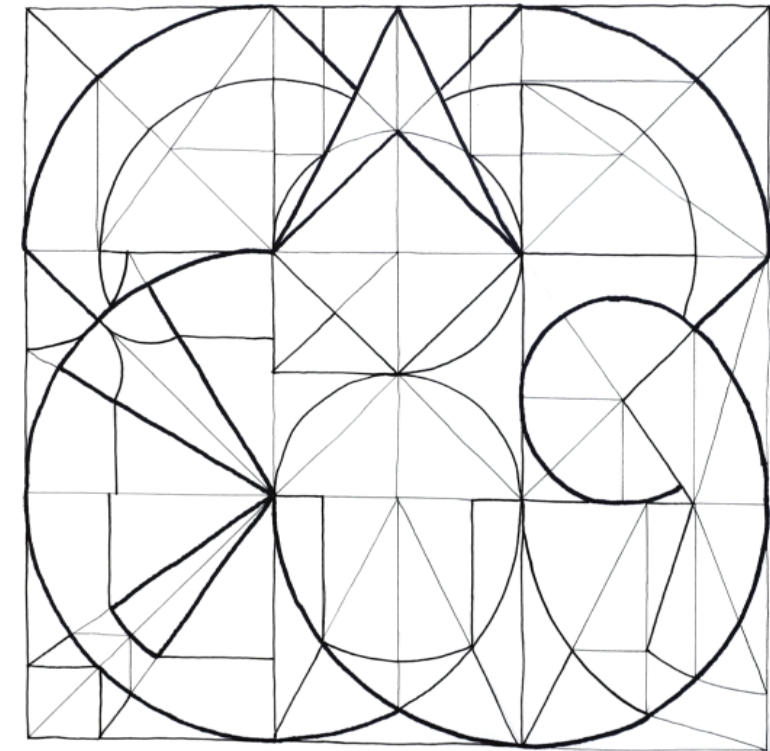
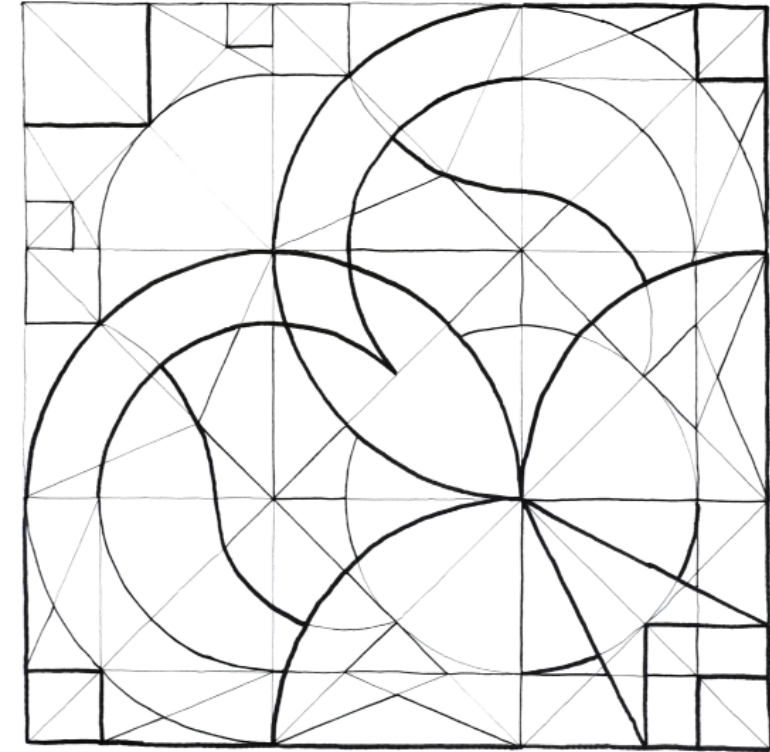
Symmetric



Asymmetric



Hierarchy



# Form

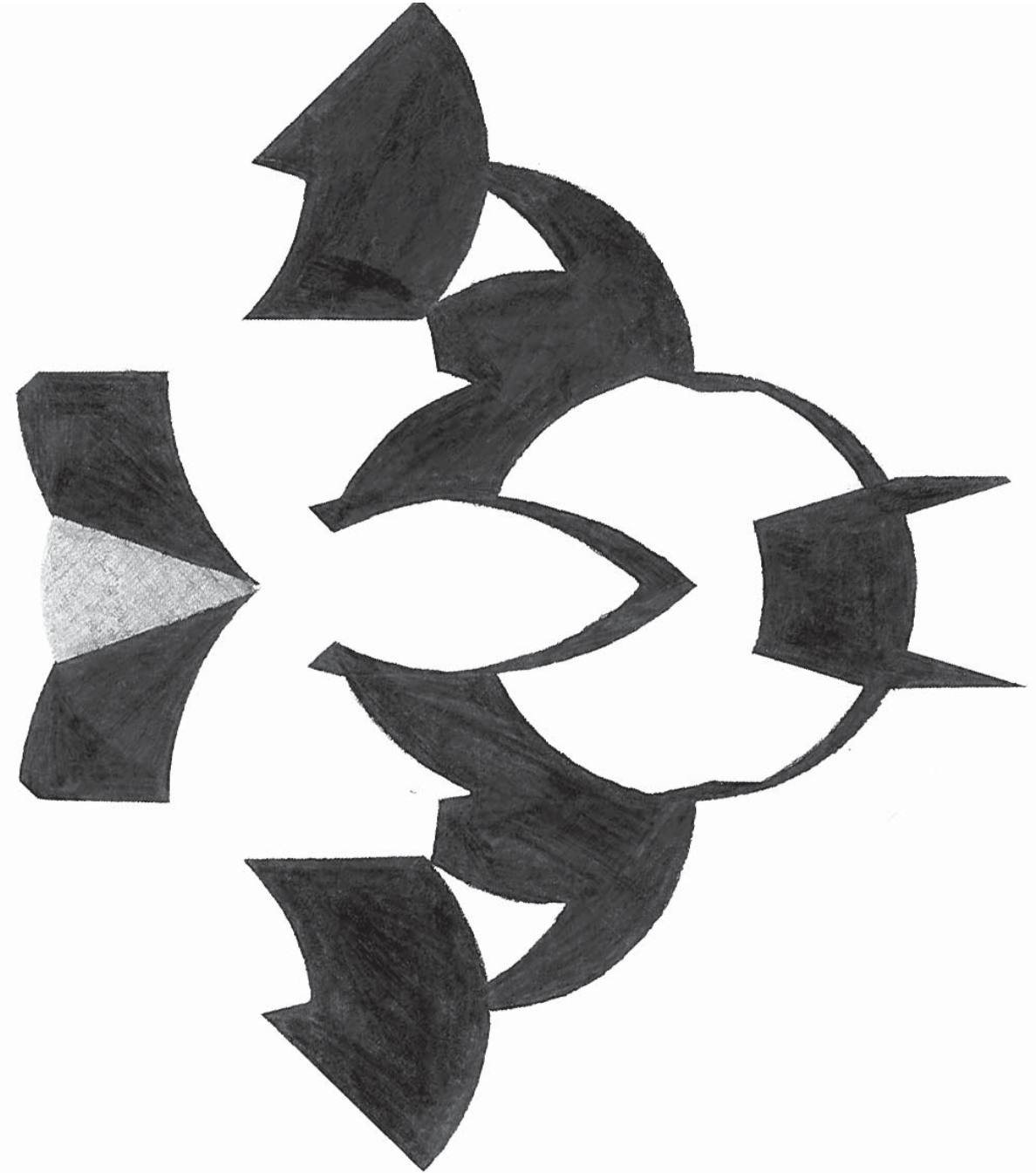
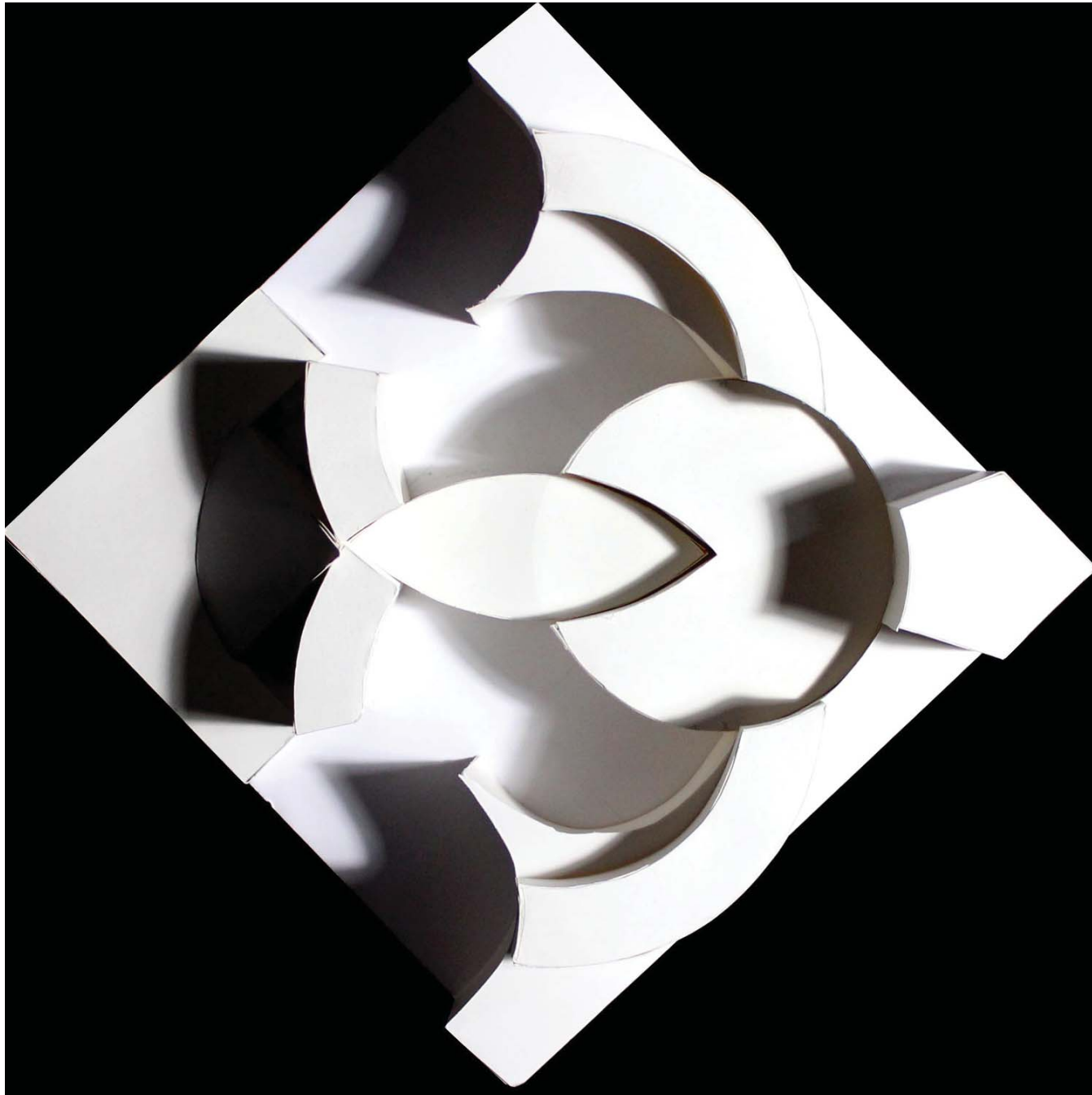
ARCH - 1131

Introduction to Architectural Design

Summer Semester 1

Two Weeks

Objective: Using the compositions from Assemblage and Hierarchy, project the lines to create a 3-dimensional form that casts dynamic shadows, then hand render the shadows cast.





# Community Gathering Space

ARCH - 1131

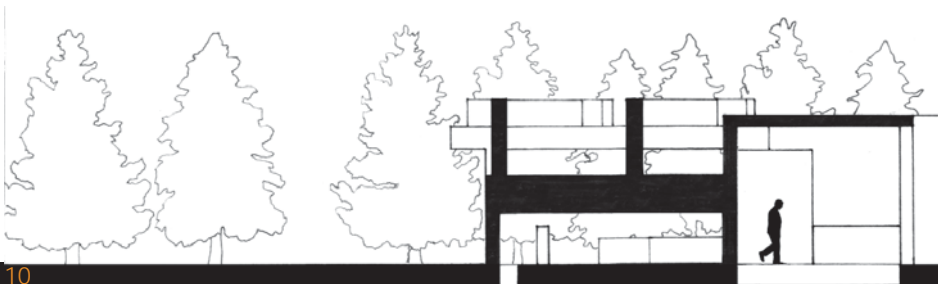
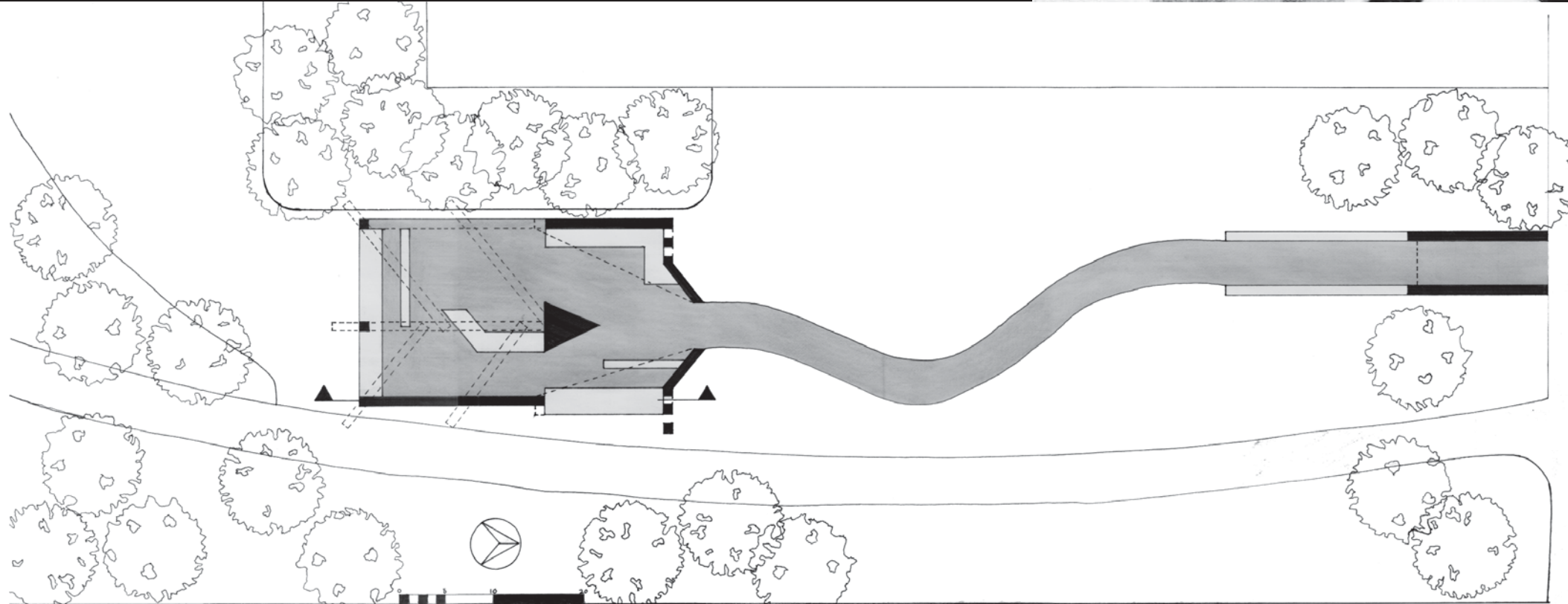
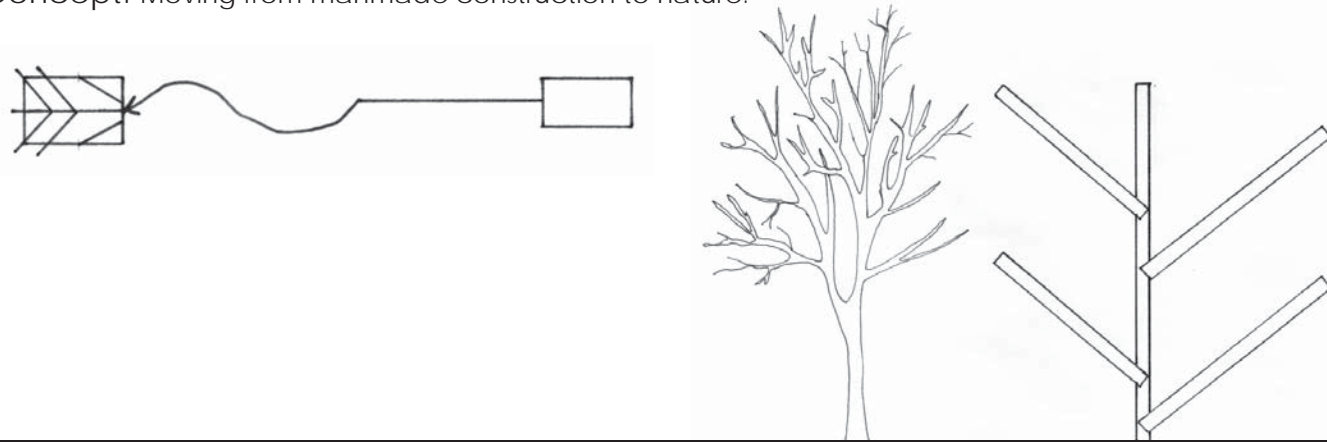
Introduction to Architectural Design

Summer Semester 1

Two Weeks

**Objective:** Design a space for the college campus which allows students and faculty to gather. The design will incorporate a three-phase sequence to shape the occupants experiences.

**Concept:** Moving from manmade construction to nature.





# Spatial Sequence

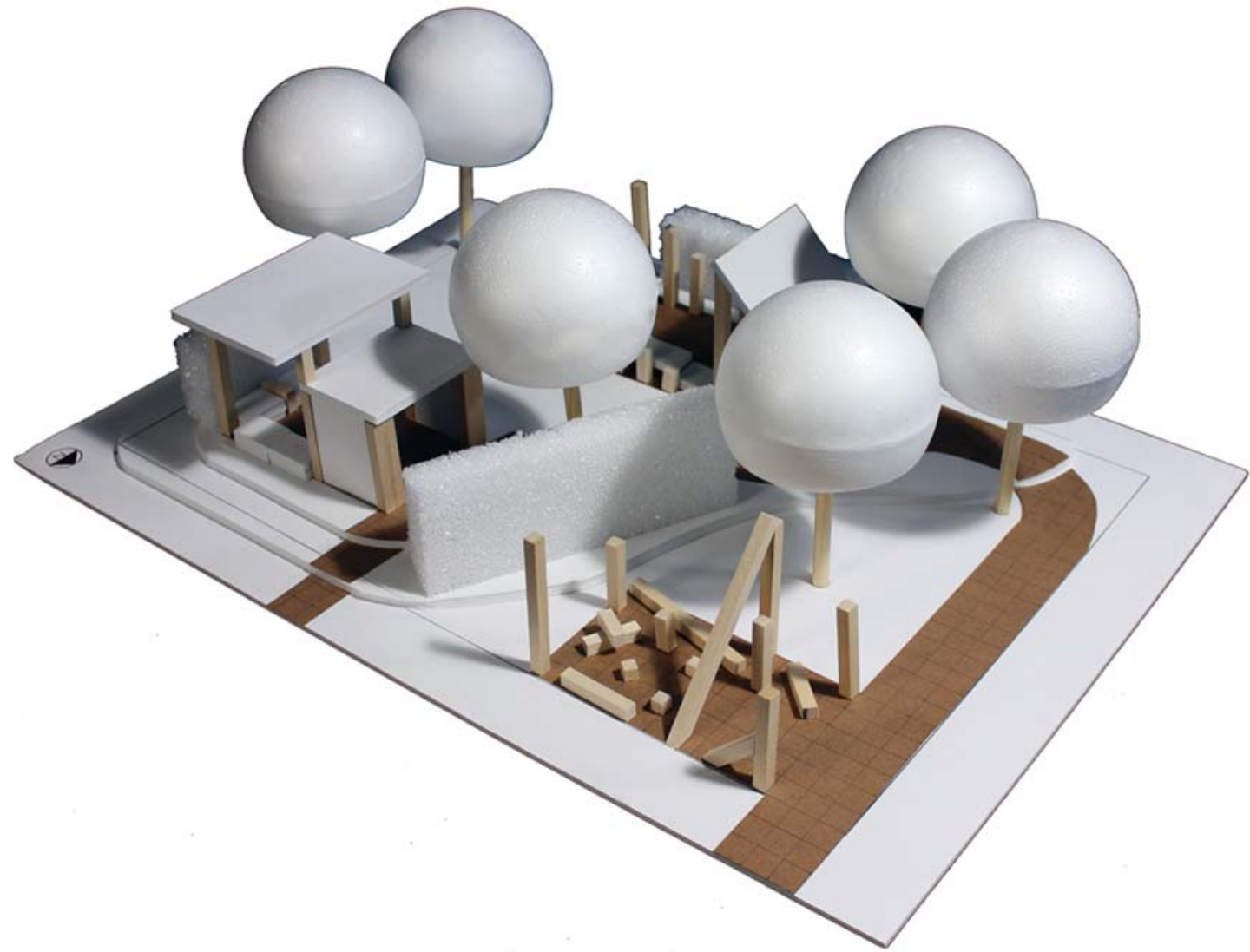
ARCH - 1131

Introduction to Architectural Design

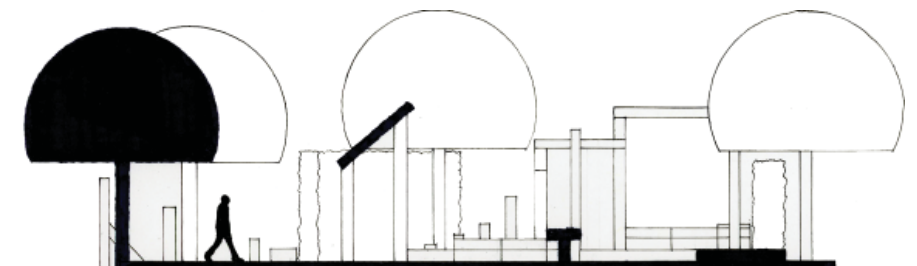
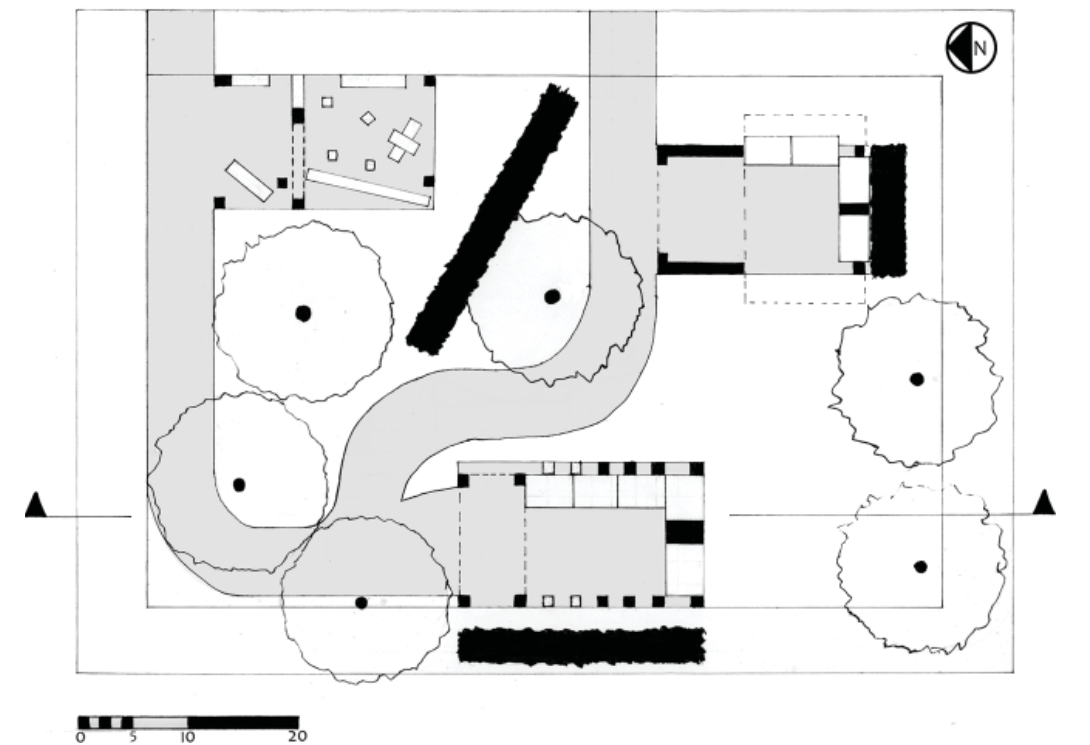
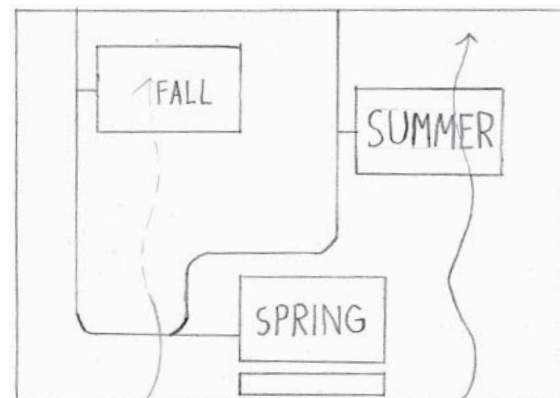
Summer Semester 1

Two Weeks

Objective: Design and model a sequence of spaces that each correspond to a specific season while using a limited kit of parts.



Solution: Spaces are designed to reflect the condition of trees throughout the seasons; from decay in the fall, to rebirth in the spring, and maturity in the summer. The spaces are oriented so that the spring space has more defense against the wind while the summer space has clearance to allow cool wind to pass through.





# Inspirations Collage

ARCH - 2201

Architectural Design I

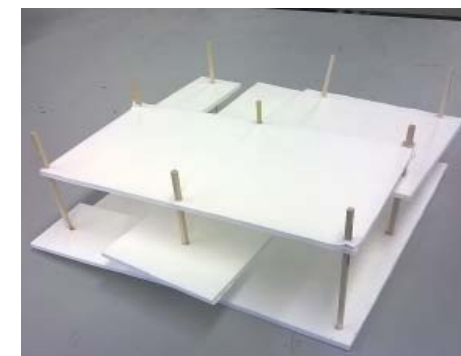
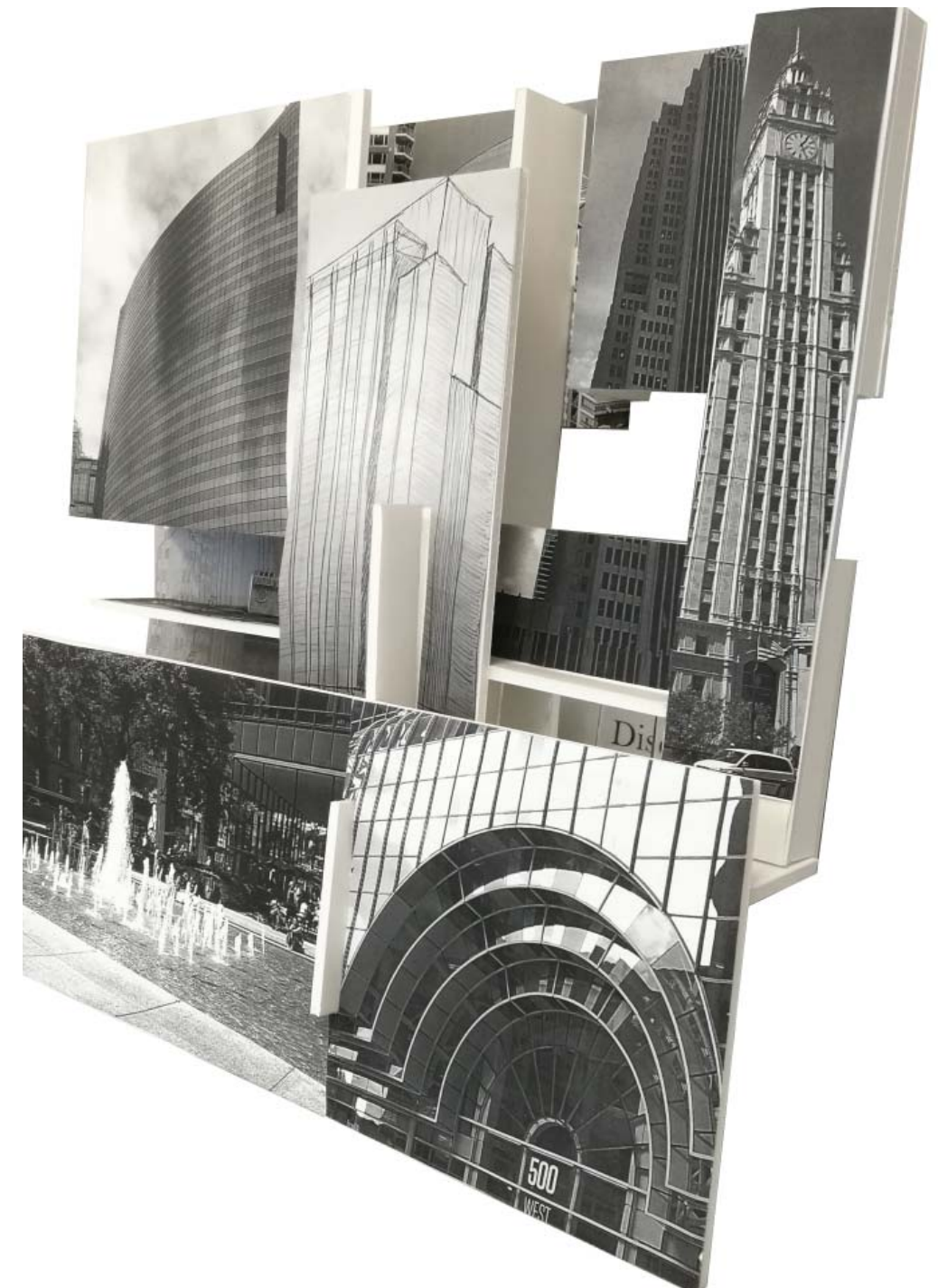
Fall Semester 2

Three Weeks

Objective: To find inspiration by walking through and viewing downtown Chicago. What was found inspiring will then be visually represented through a 3-D collage of images and sketches showcasing three concepts that answers the question "Where do ideas come from?"



Solution: The inspiration came from looking at the skyscrapers from different street corners. These views were fascinating as looking at a building from one angle would hide buildings behind it. Simultaneously, looking at the same building from a different angle would then reveal the hidden building that could not be seen before. This became the basis for the collage, where panels of different buildings would be layered one over the other, representing the depth and layering of the city. Viewing different angles would reveal a new building, giving the viewer that same perception as if walking through downtown.





# Ecology Center

ARCH - 2201      Architectural Design I  
Fall Semester 2      Ten Weeks

**Objective:** Design a public ecology center for a site located off of North Avenue Beach, Chicago. The project is meant to explore the human relationship with ecology and the natural environment on a site located at the urban/natural threshold. The building programs are to fill approximately 7,500 sq. ft. and includes education spaces, an exhibit, staff space, and a public cafe.

**Solution:** With a repetitive geometric form, the building is reminiscent to patterns found in nature. These patterns create a dynamic space defines by light and shadow that people move through.

| OPPORTUNITIES            | CHALLENGES                 |
|--------------------------|----------------------------|
| LAKE VIEW                | LAKE SHORE DRIVE NOISE     |
| EASY PUBLIC ACCESS       | PROXIMITY TO POPULAR BEACH |
| LINCOLN PARK LANDSCAPING | VARIETY OF WEATHER         |

