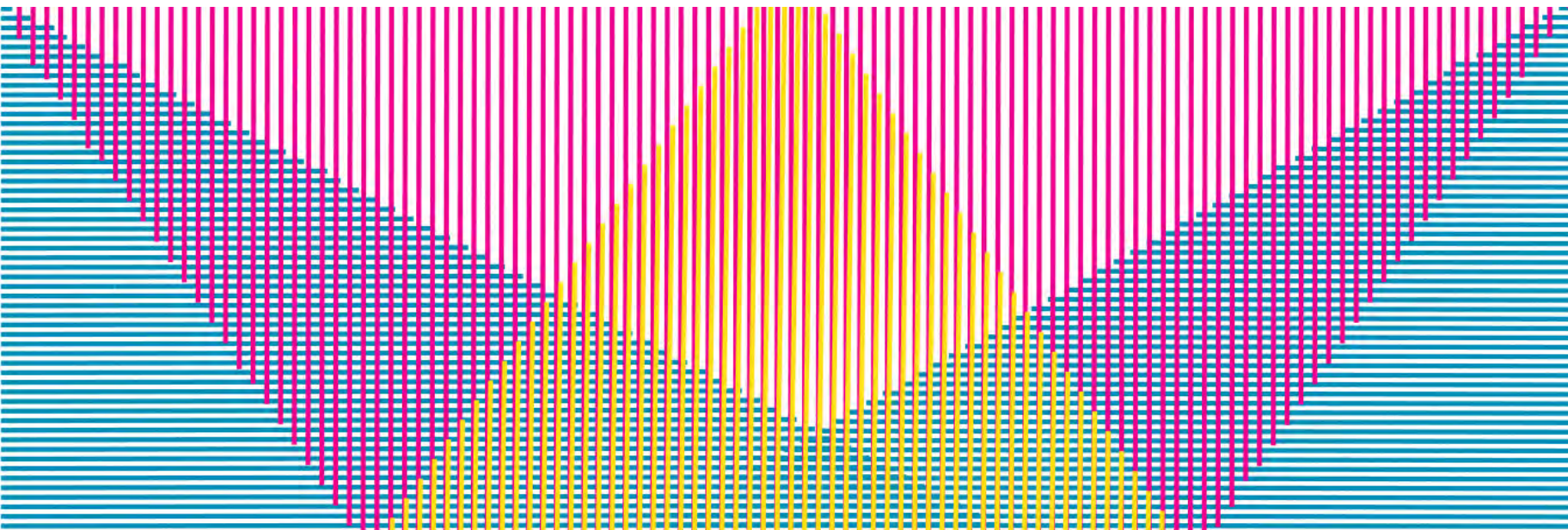


JUJOHERRERA

PORTFOLIO





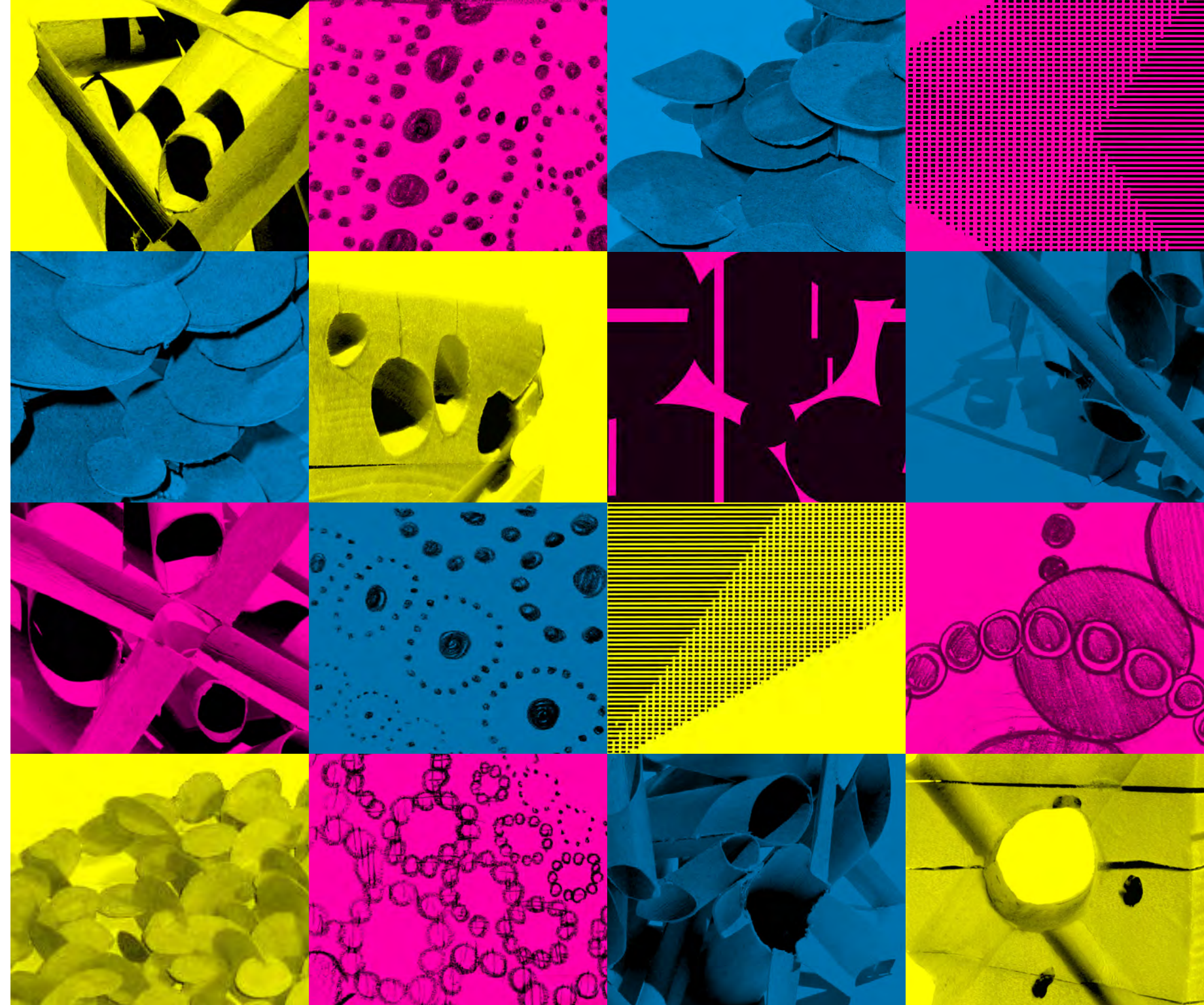
Line
Process
Color
Surface
Mass Pt.1
Mass Pt.2



Gathering Space
Nature of Materials
Inspirations Collage
Inspirations Collage Second Study
Precedent Study
Northerly Island Education Pavilion



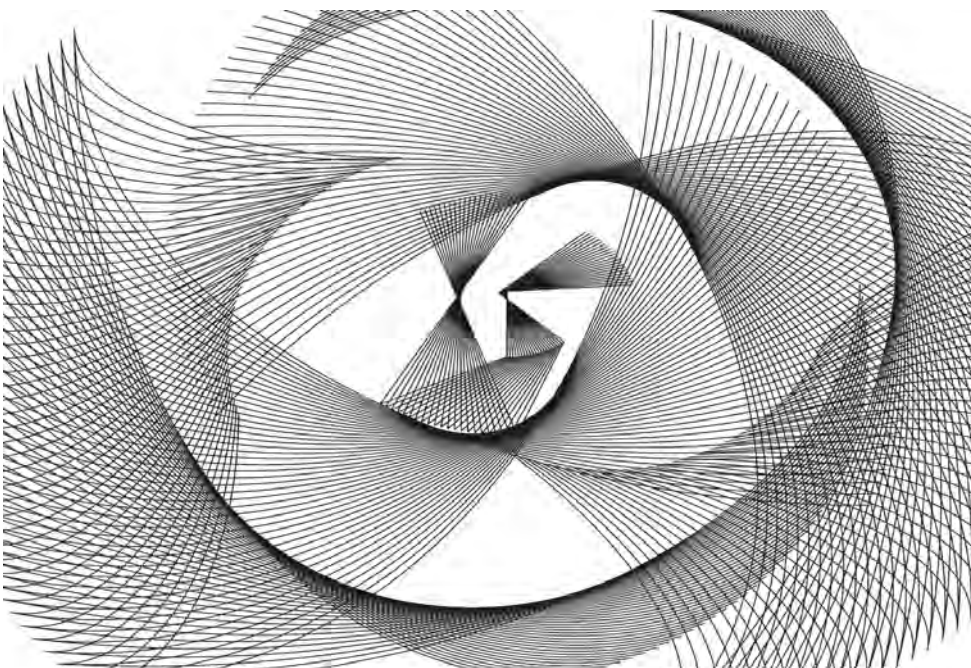
Sketches
Travel Sketches
Art



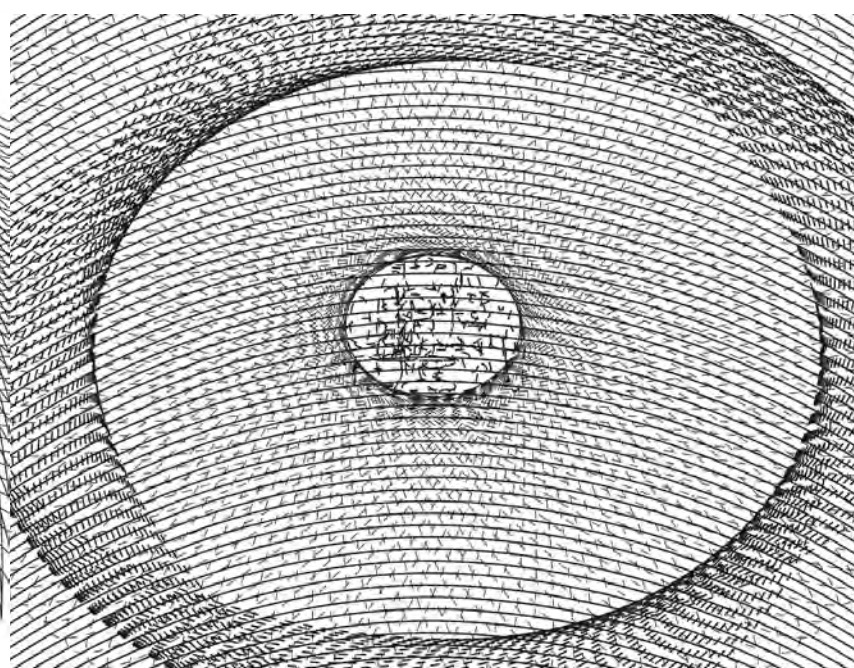


Description:

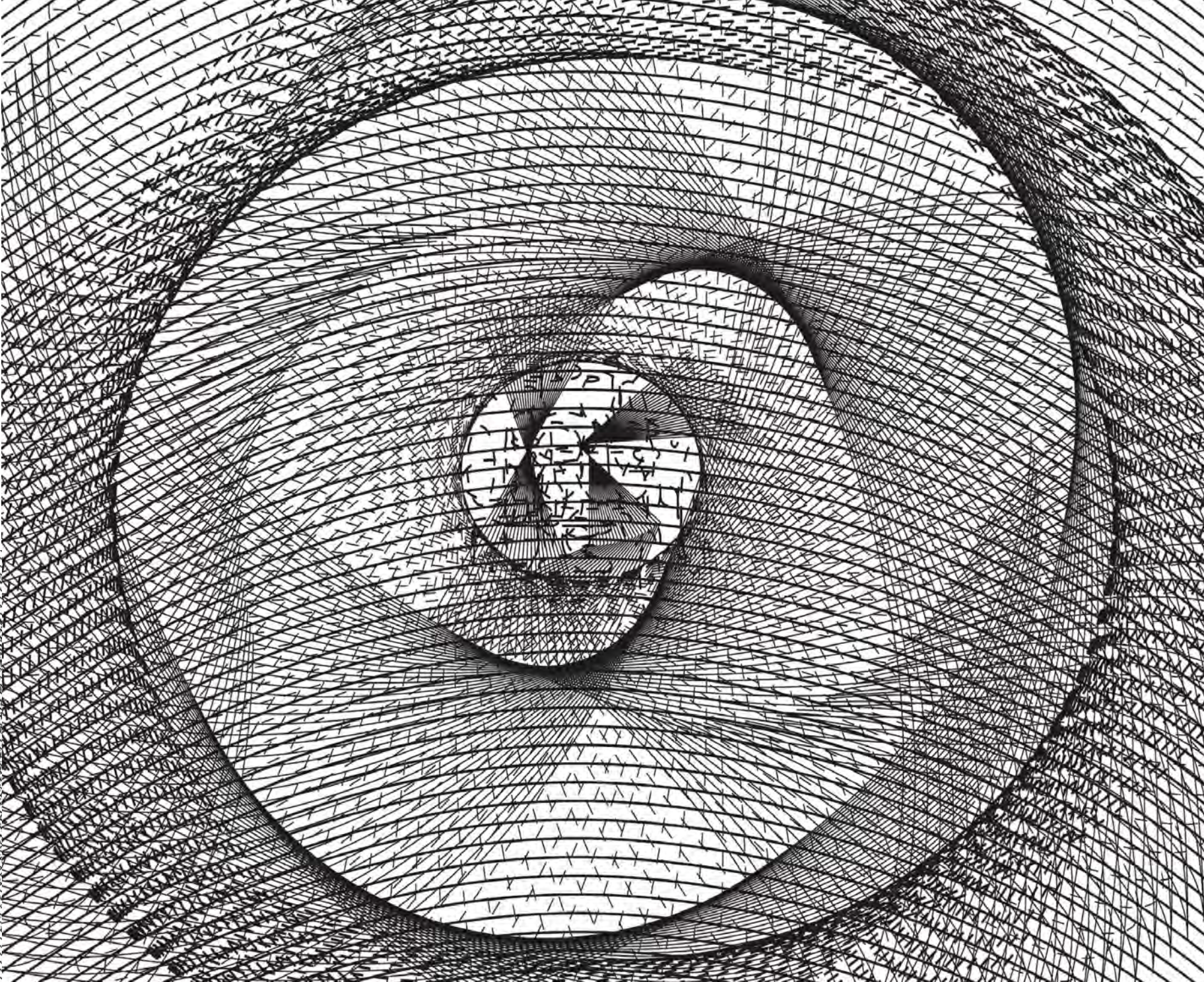
The goal for this project was to create a series of two dimensional drawings using different effects/affects and also a range of consistency and repetition, these drawings were completely abstract.



Undulated Lines



Stitched Lines

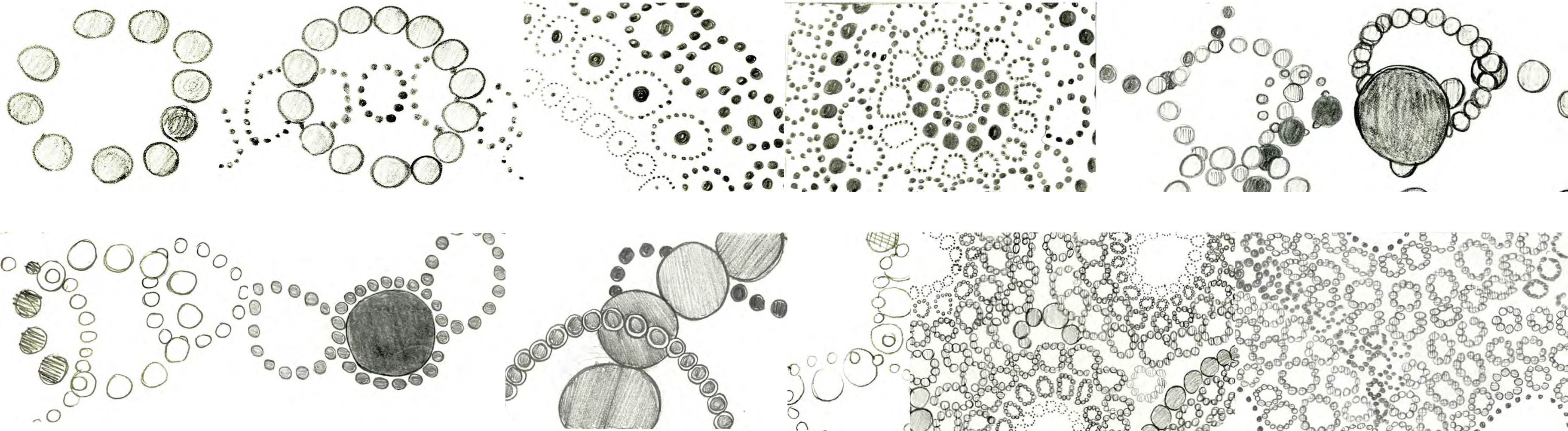


Undulated + Stitched Lines

PROCESS

Description:

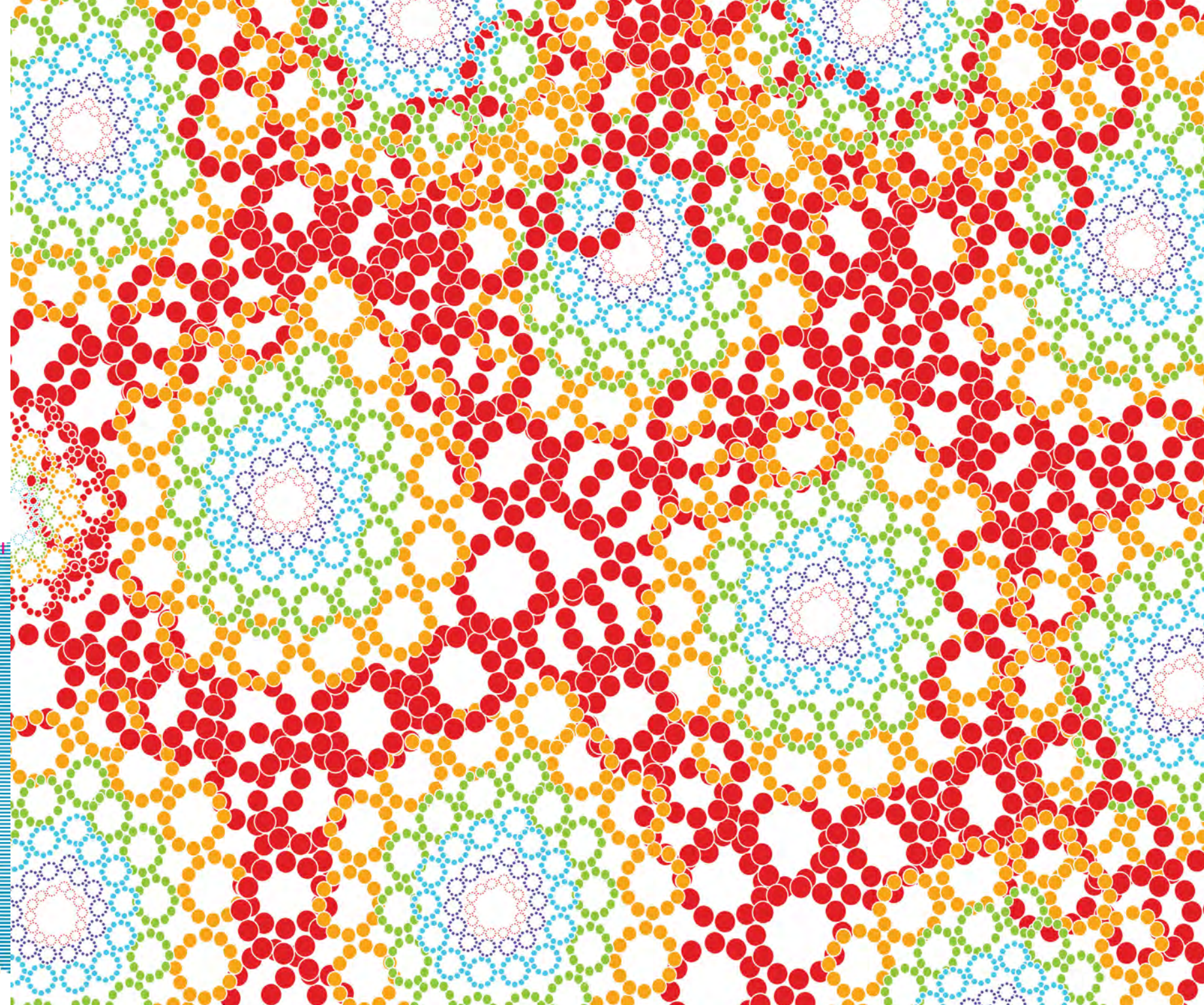
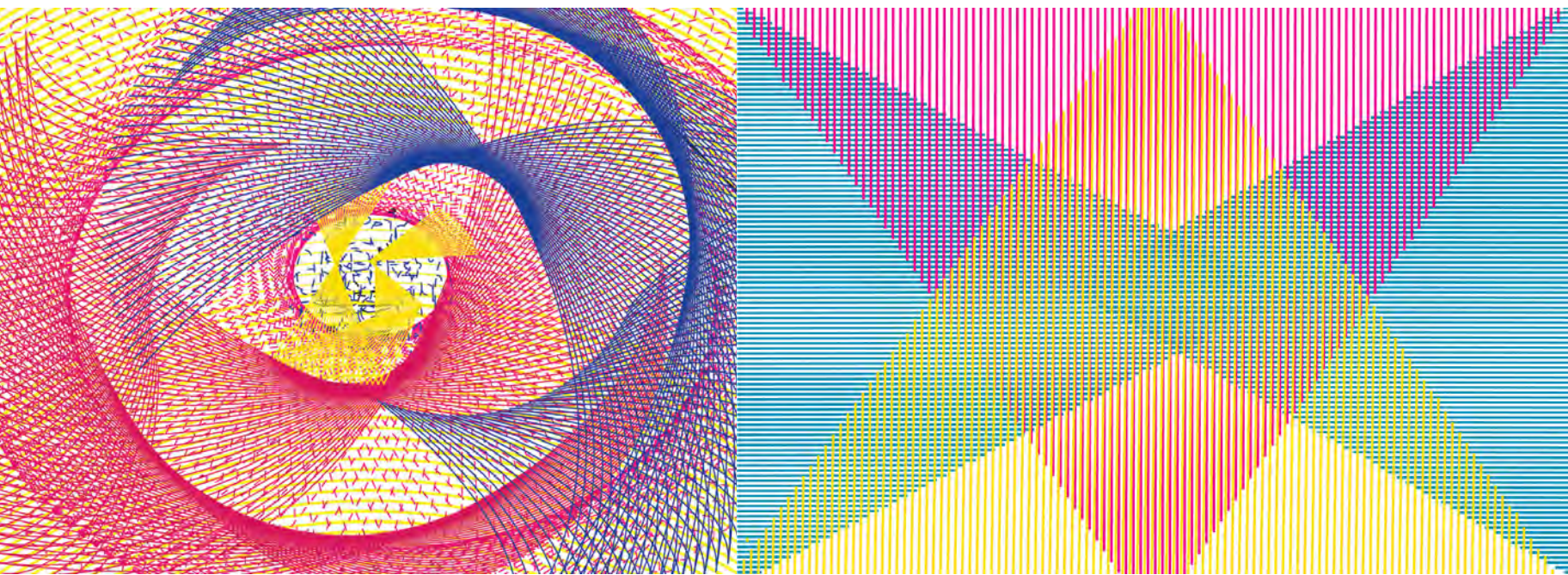
Process sketches taken from sketchbook.



COLOR

Description:

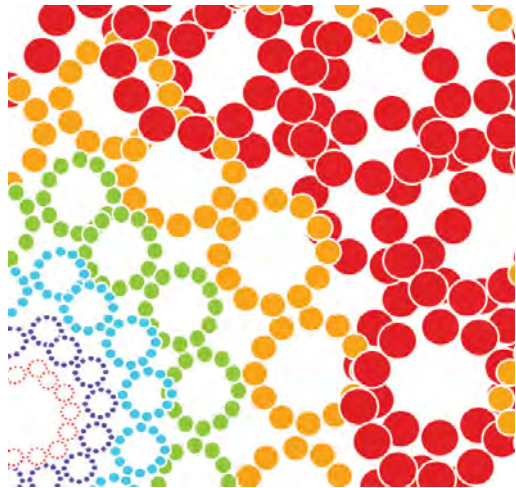
Using the same principles as in the “Line” project, I created another series of drawings but this time I used a clear, curated color palette that could be addressed independent of it’s deployment.



SURFACE

Description:

The purpose of this project was to create an understanding of figure/field relationships to speculate on the limits of minimal enclosure and create something unexpected by doing the same thing over and over again.



"Chosen section of most succesful drawing"



"Study model based on previous drawing"



"24" x 12" x 5" final study model"

Description:

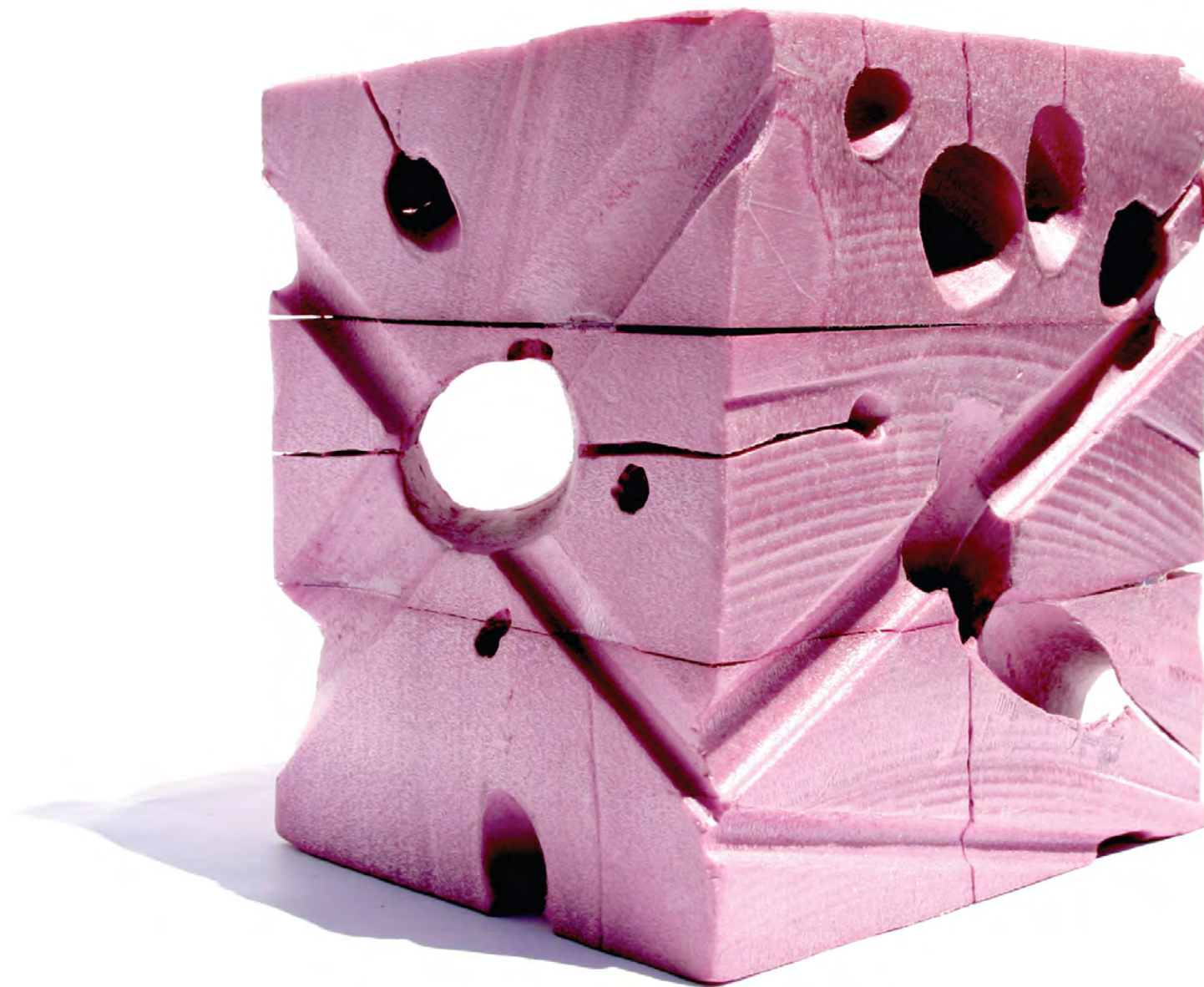
My goal for this project was to sustain specified consistency, while allowing variation occurring from working with different media in a single process.



"Previous surface model"



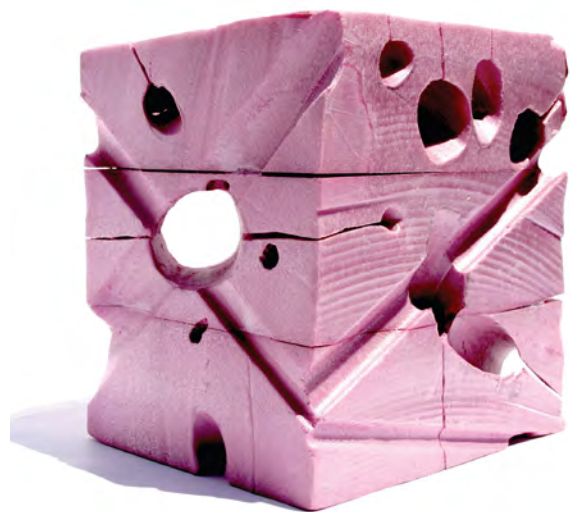
"Diagram based on surface model"



"6" x 6" x 6" foam model based on previous diagram"

Description:

In the second part of the project my goal was to construct a 6" x 6" x 6" chipboard model of the mass's outer limits.





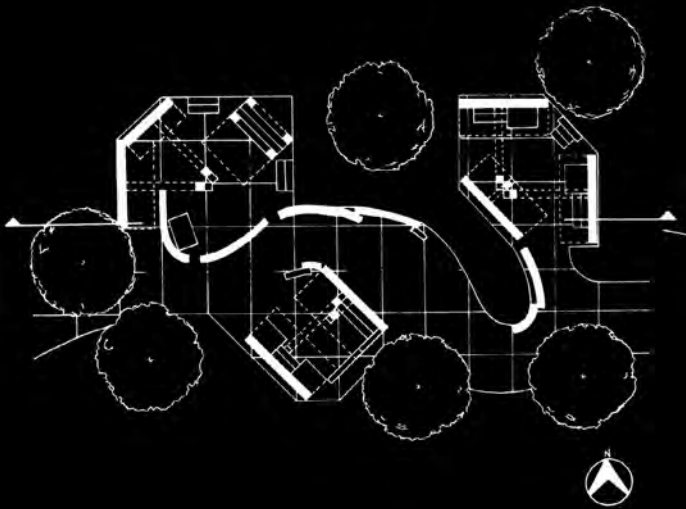
SPATIAL SEQUENCE

Description:

The Purpose of this project was to create three outdoor spaces that provide seating in a creative way specifically for spring, summer and fall all connected by a main path.

Concept:

I designed three spaces that are visually connected by similar elements, each space has public and semi-private areas where people can sit if they want privacy or if they are simply enjoying the day.



NATURE OF MATERIALS

Description:

The purpose of this project was to create an abstract sculpture based on a building from a list of various widely recognized projects around the world. The Sculpture could be made out of any materials and could not be heavier than 200 pounds and taller than the average human.

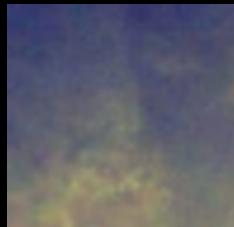
My choice was The City of Arts and Sciences by Santiago Calatrava in Valencia, Spain.



Wood



Concrete



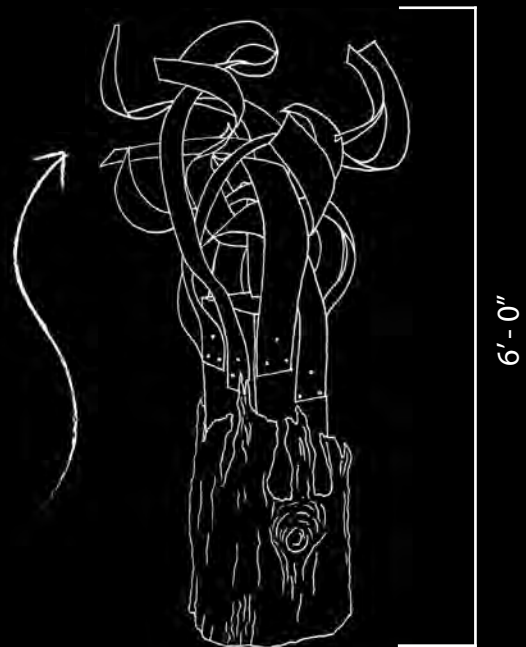
Metal

Wood with incrustated shards of glass represents the previously dry, undesirable site. Concrete and Metal represent the development of Calatrava's architecturally "organic" project.

Concept:

An article about the site of The City of Arts and Sciences mentioned how the project brought new focus to the previously incoherent, underdeveloped dry bed of the Turia River.

My main idea was to make a tree-like sculpture not only to reference Calatrava's famous stylistics but also to show how the site grew and changed from being a dry and not very desirable site to a new and very popular place among Valencians with the construction of Calatrava's architecturally "organic" project.



6'-0"



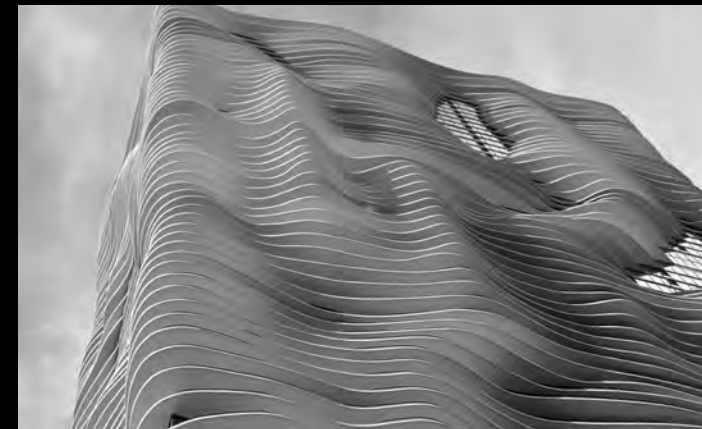
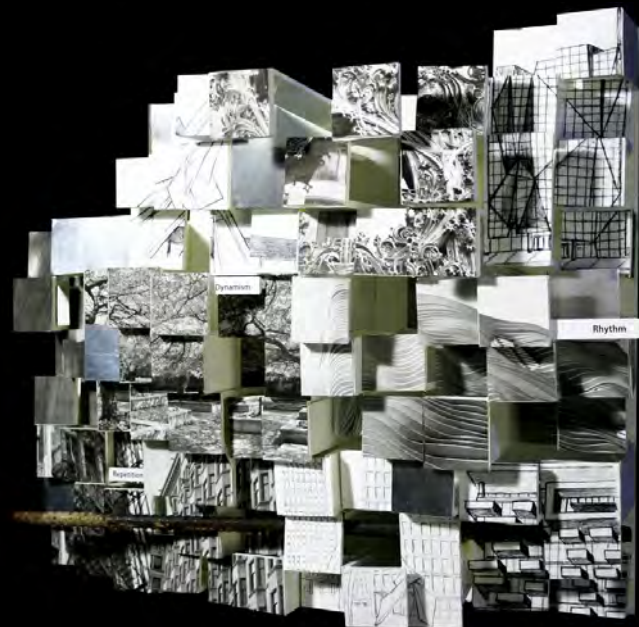
INSPIRATIONSCOLLAGE

Description:

Explore the question “where do ideas come from?”
Then create a collage of images, drawings, sketches and text
from inspiring Architectural examples in downtown Chicago.

Concept:

Based on my 3 favorite photographs, I created a
24”x24” field that translates Rythym, Dynamism and Repeti-
tion by having a series of equally sized squares, each at a
different height, creating a wave like effect.



Rhythm



Dynamism



Repetition



PRECEDENT STUDY

Description:

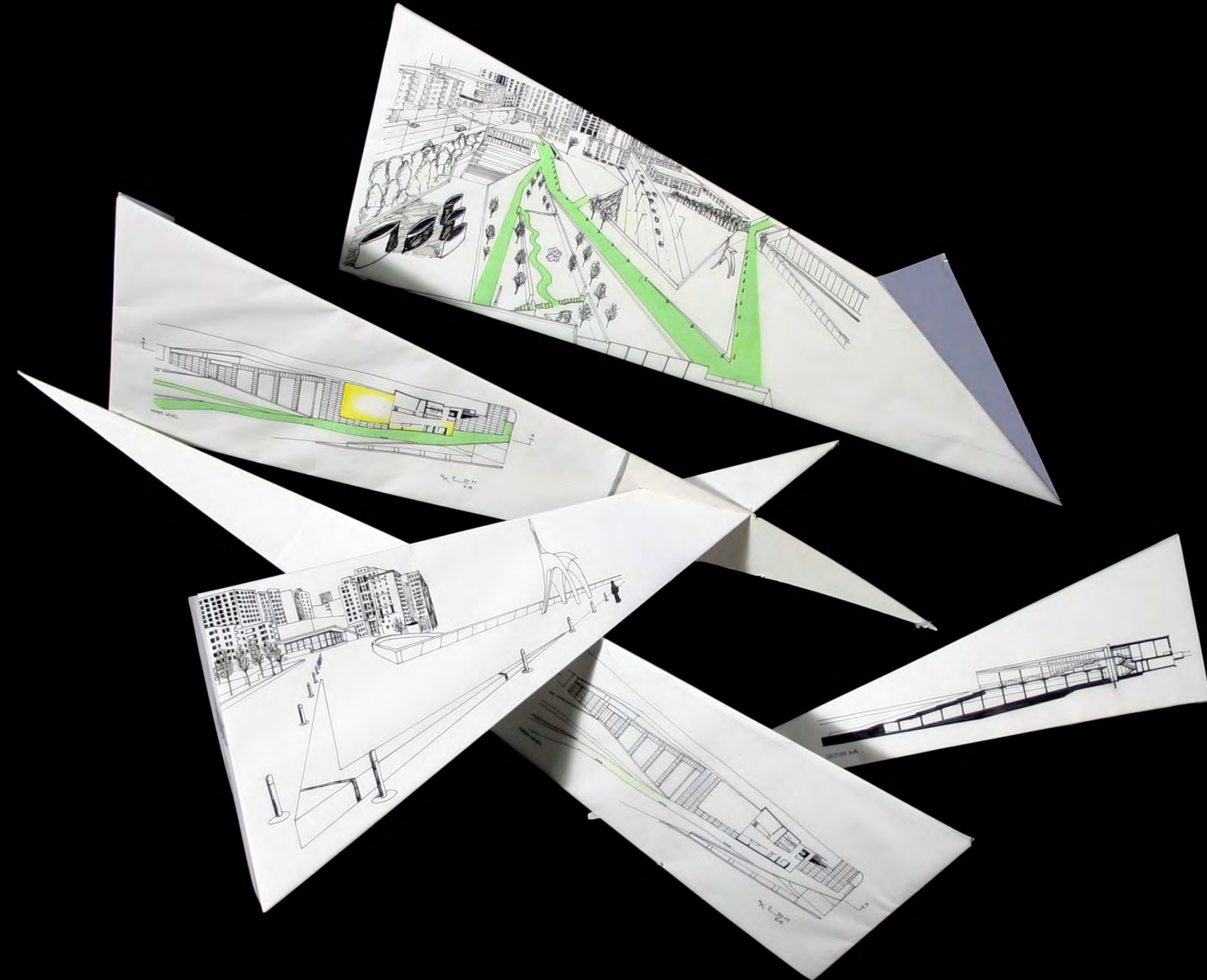
To research a selected work of an architect and create a three dimensional presentation board inspired by the concepts of the selected work. The board could be no larger than 24" x 26" x 6" and find plans, sections, elevations and 3D representations that could be reproduced.

Concept:

Based on the Olympic Sculpture Park in Seattle, Washington by Weiss/Manfredi I created a board that translated the architects idea of connections made by exaggerated triangular shapes.



concept diagram from Weiss/Manfredi



precedent building photographs

INSPIRATIONSCOLLAGE

SECOND STUDY

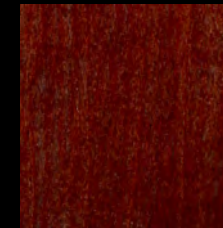
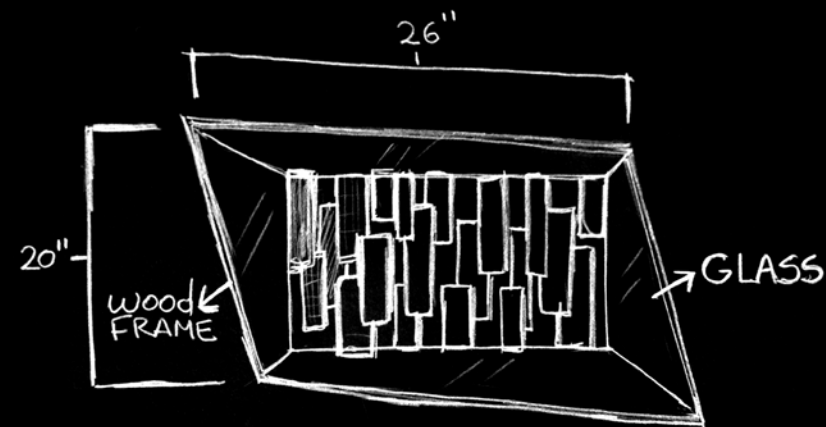
Description:

Explore the question “where do ideas come from?”
Then create a three-dimensional collage of images, drawings, sketches and text from inspiring Architectural examples in downtown Chicago.

Concept:

The city of Chicago is very layered with hundreds of years of history and Architecture and through those years when you focus on the details you can start seeing things that you wouldn't normally see unless paid attention and explored around the city.

However walking around Chicago is a very overwhelming experience and I wanted to show that by having the inside part of the project reflected on mirrors so that you would get a little of that overwhelming feeling you feel while walking in Chicago.



Beautiful Material

Wood:

Wood is beautiful because it is very flexible in its uses and I have seen wood used in very unique ways.



Found Object

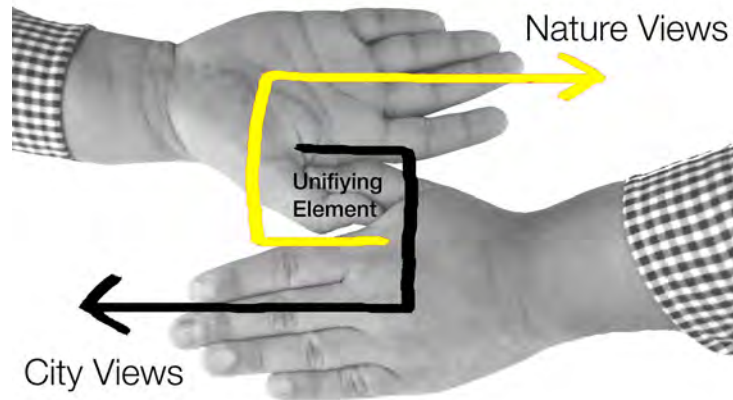
Rusted metal:

I loved this piece of metal because it reminded me of the industrial beginning of Chicago



NORTHERN ISLAND

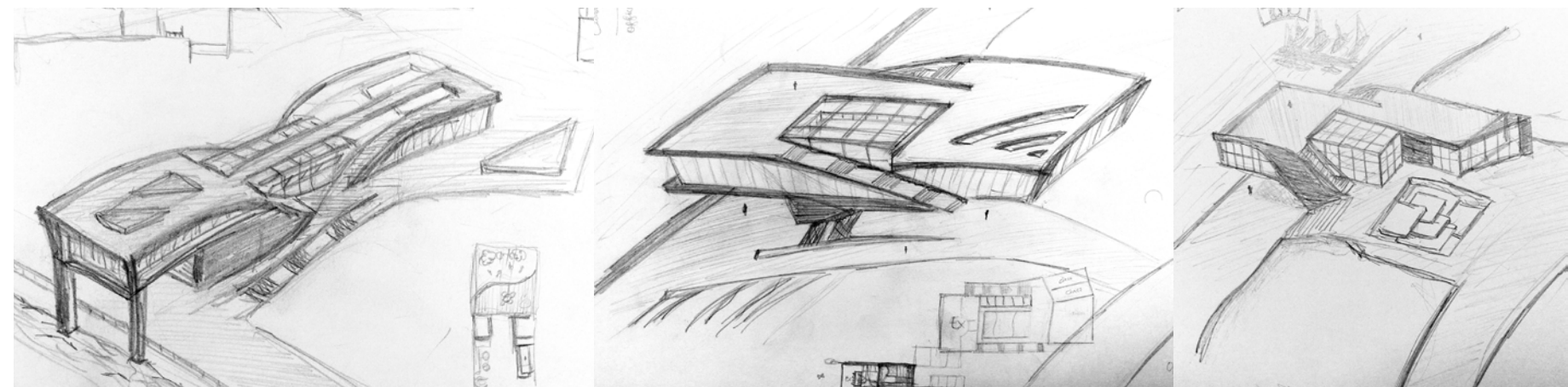
EDUCATION PAVILION



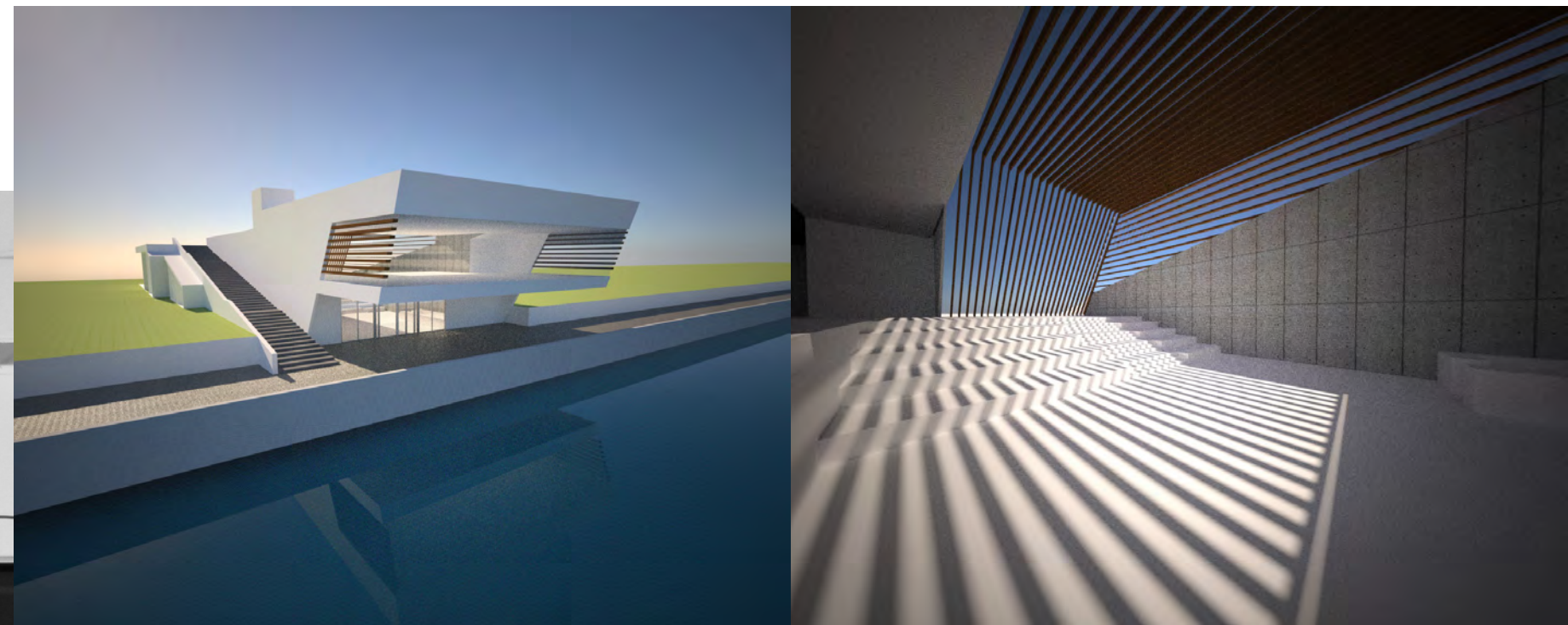
Interlocking movement frames views and unifies City with Nature



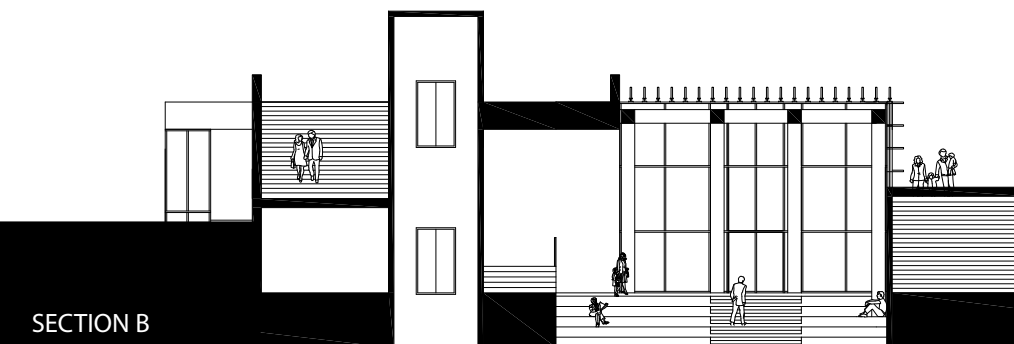
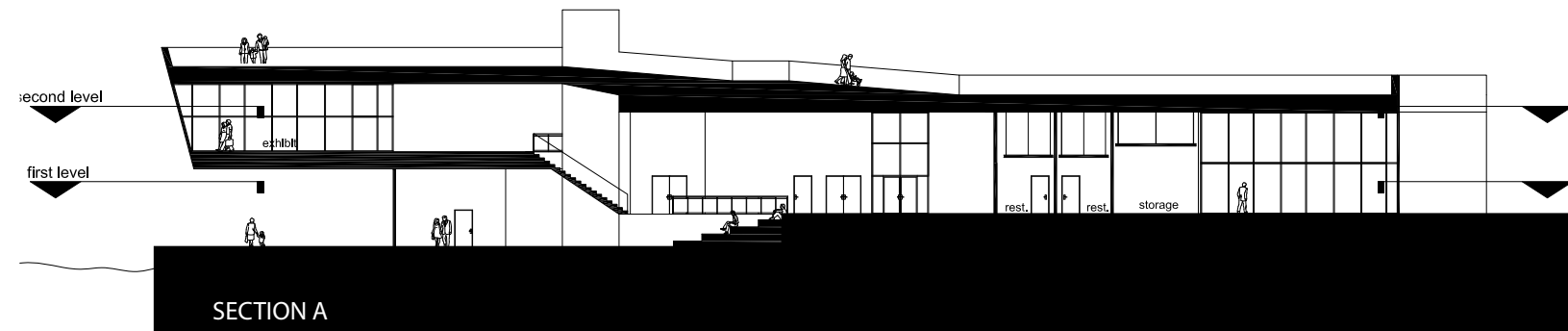
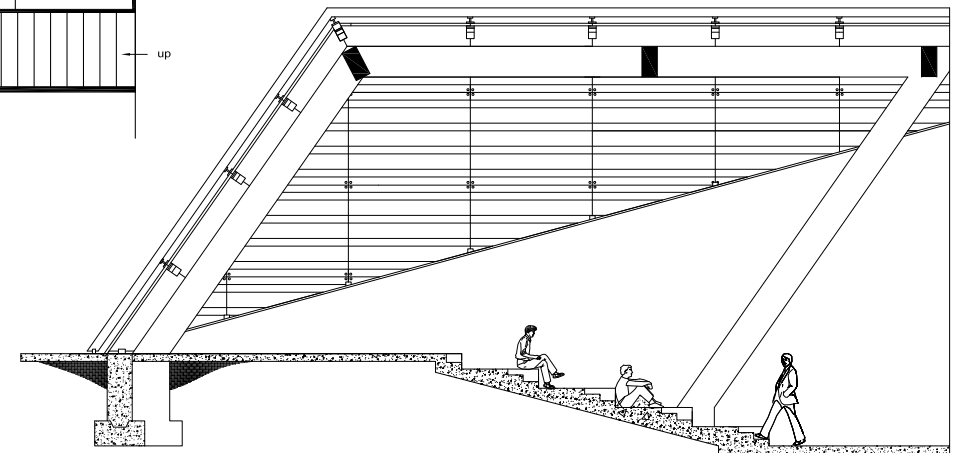
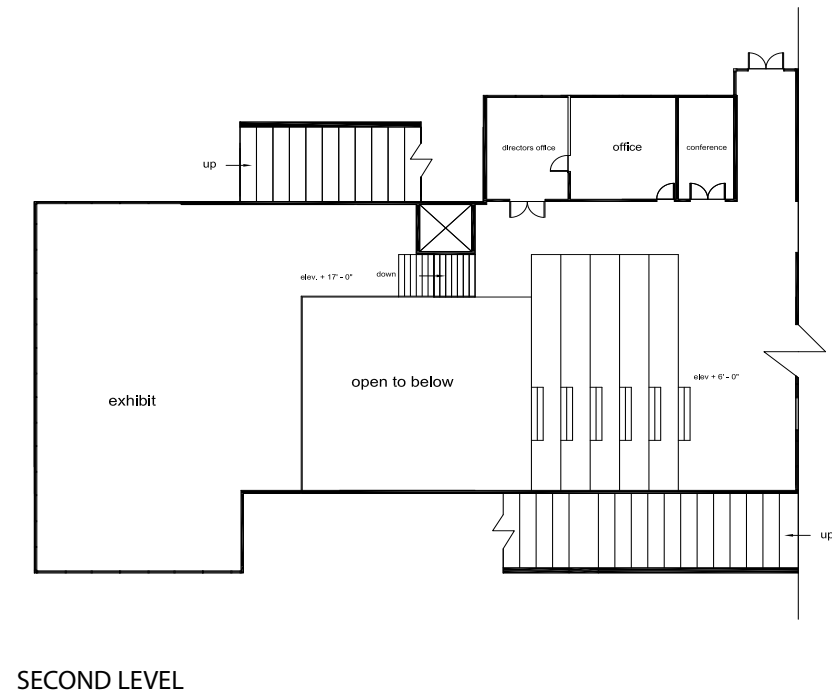
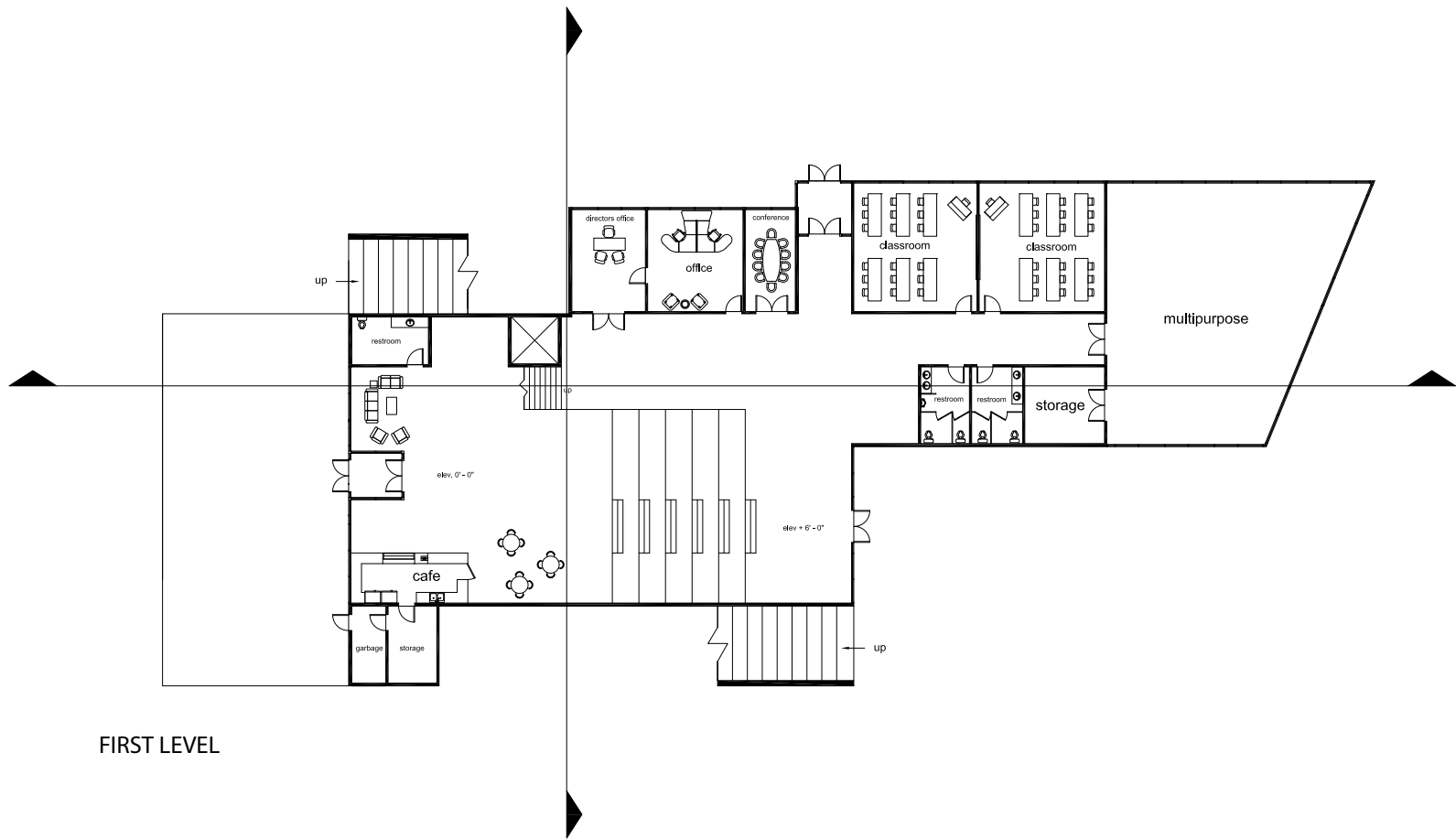
Study Models



Process Sketches



Renderings

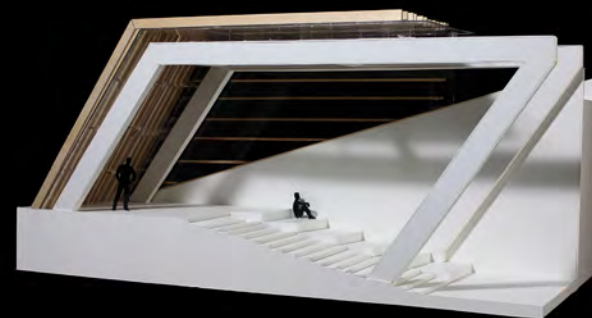




FINAL 1/8 MODEL



FINAL DETAIL MODEL

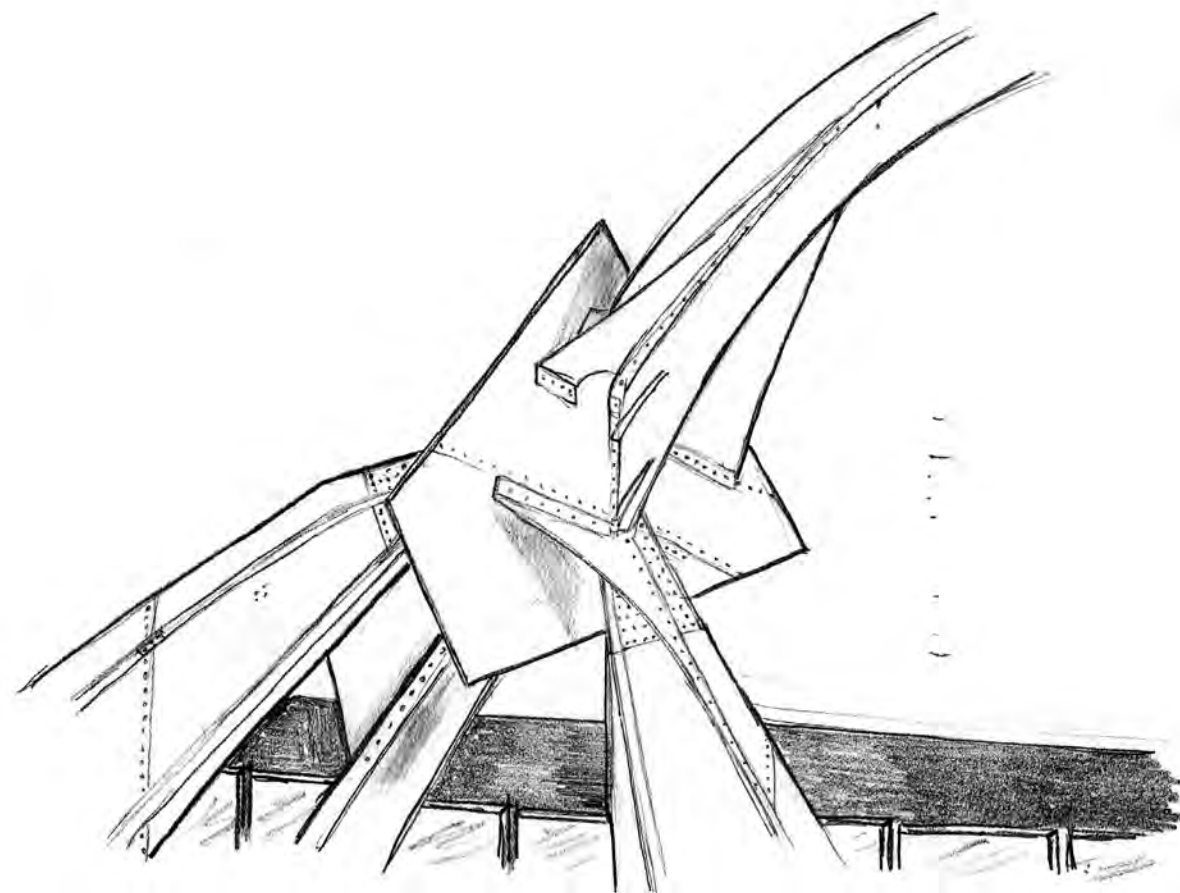
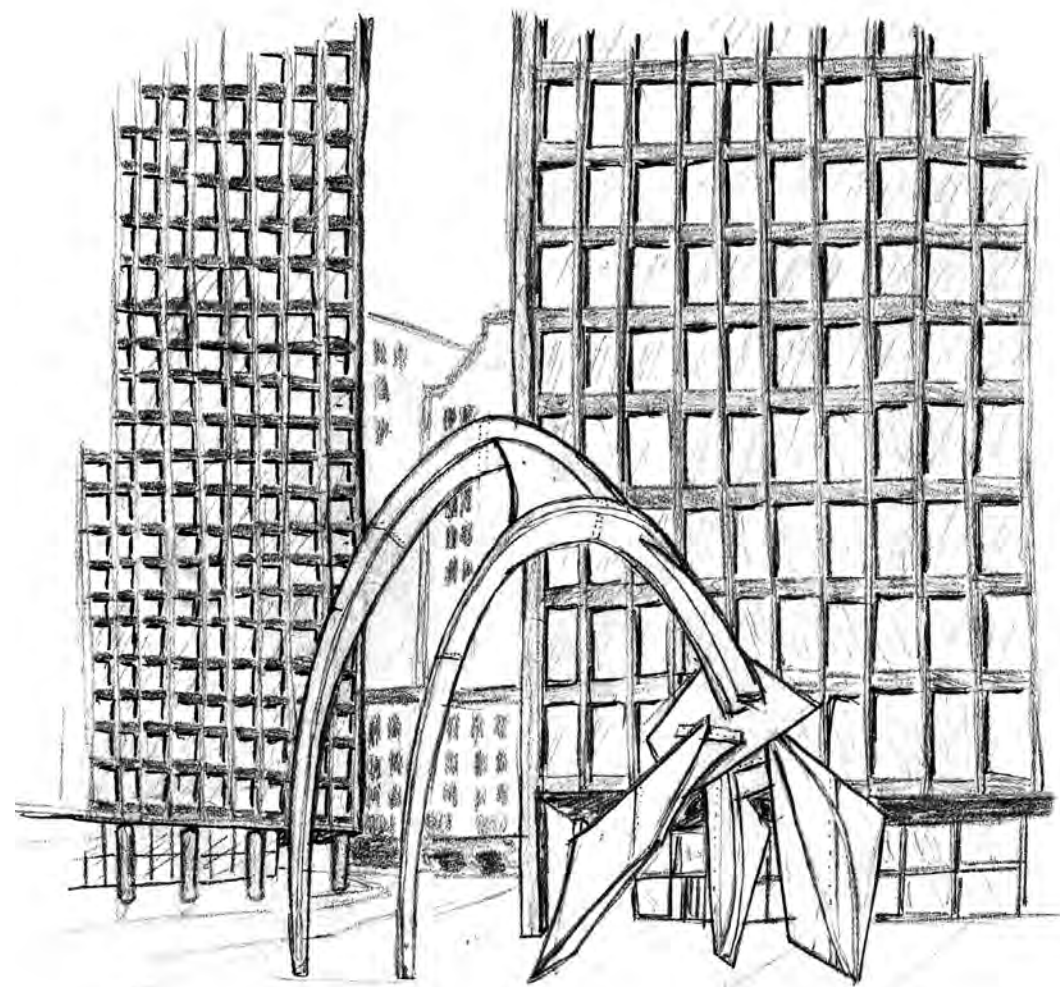




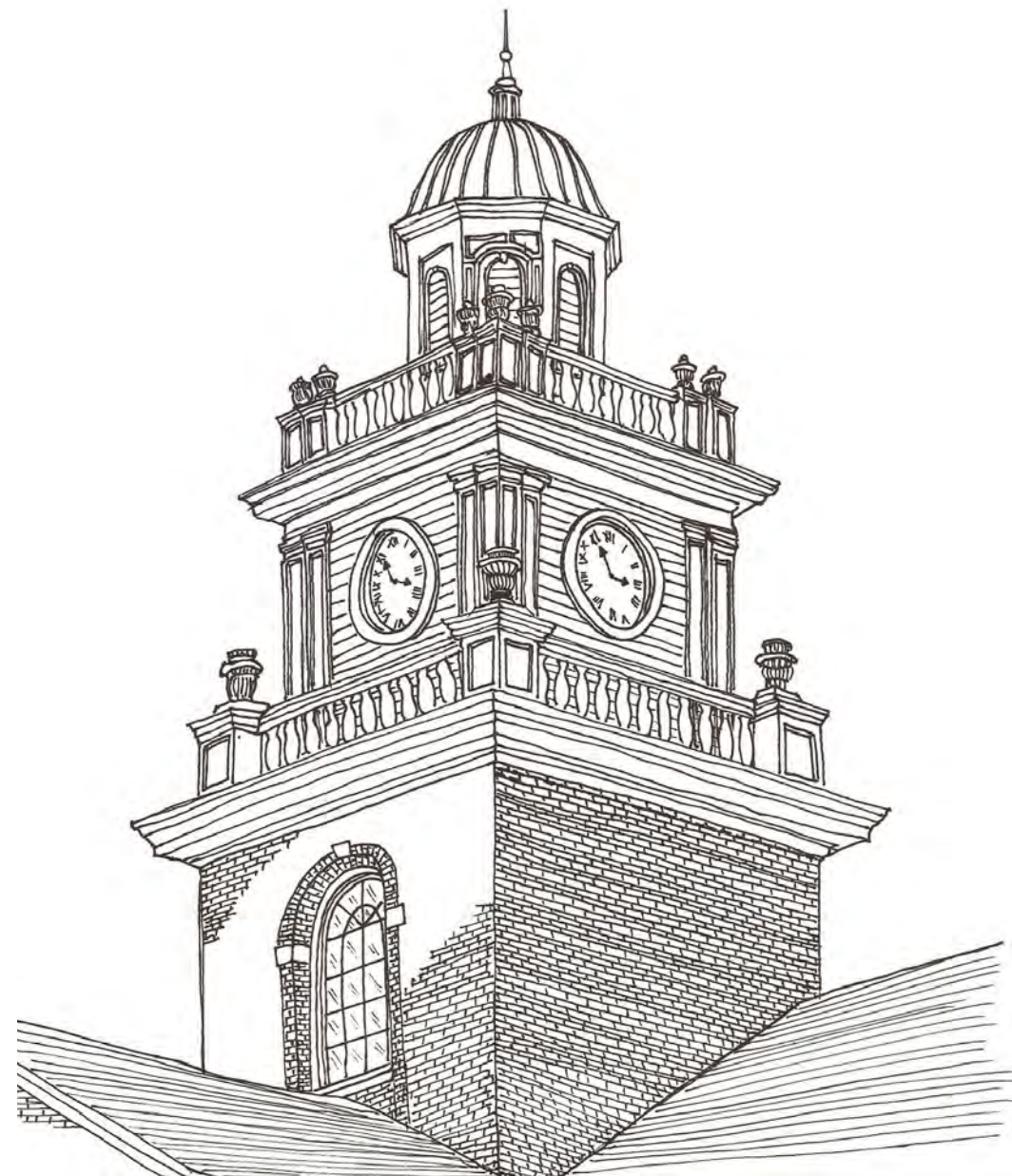
Independent
Work



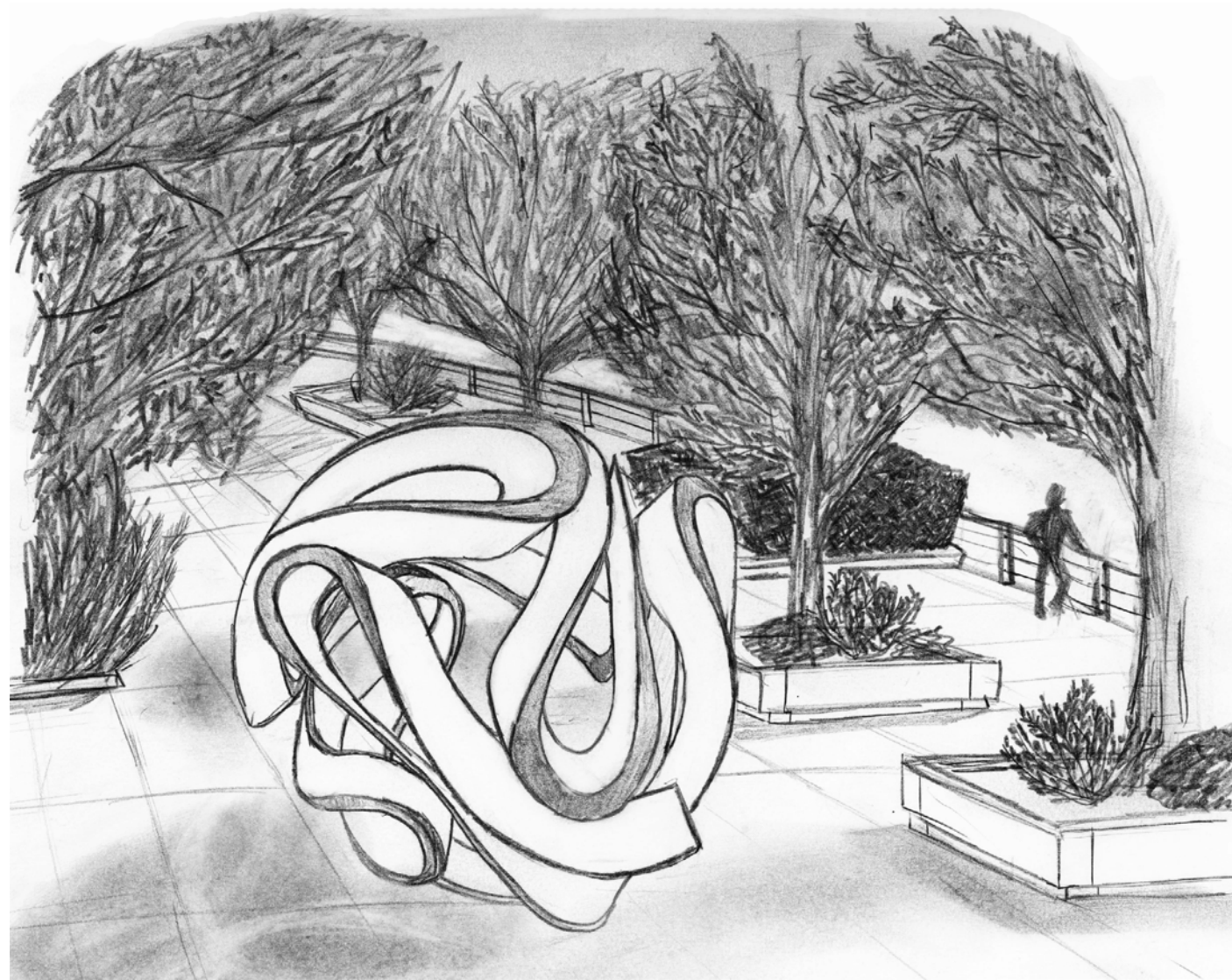
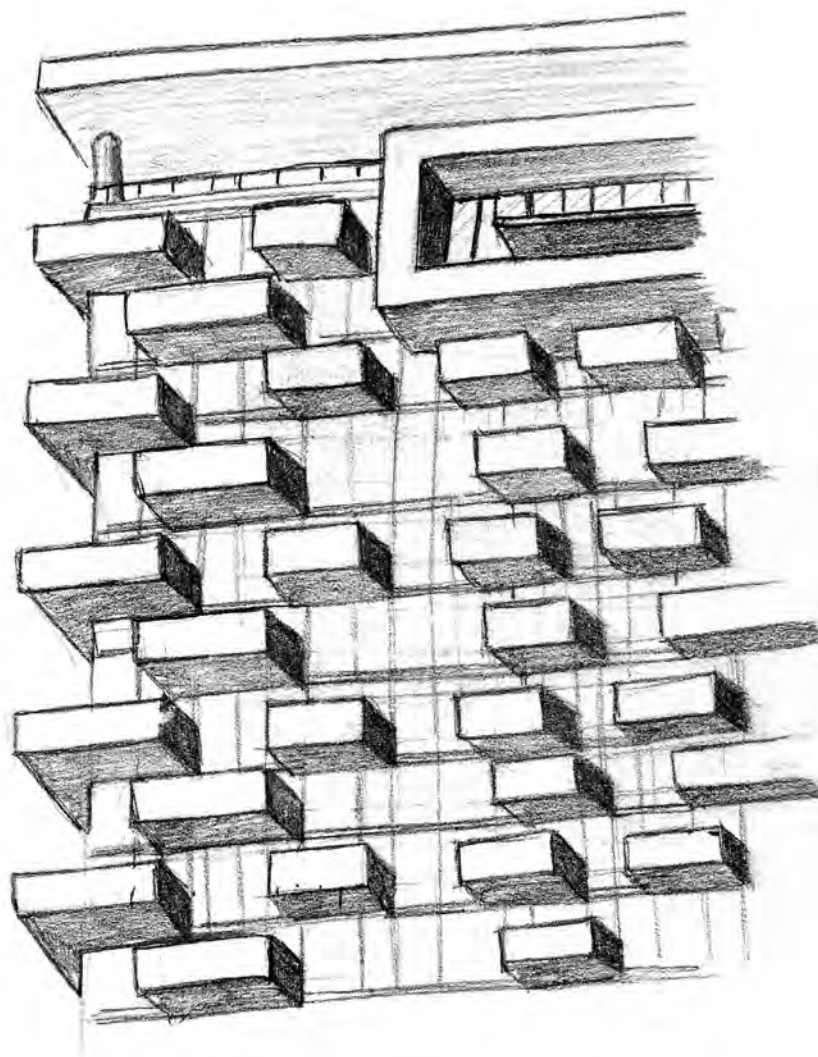
SKETCHES



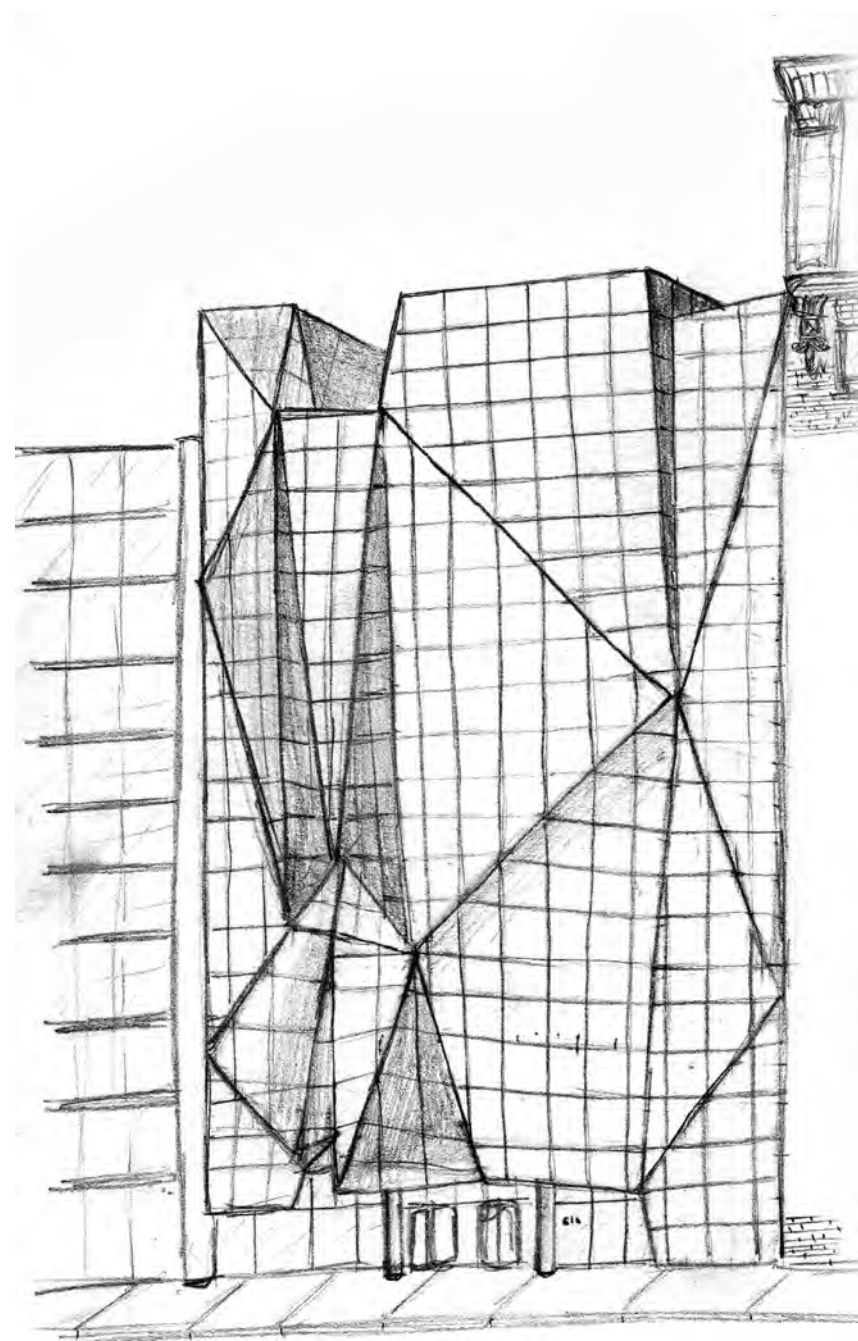
SKETCHES



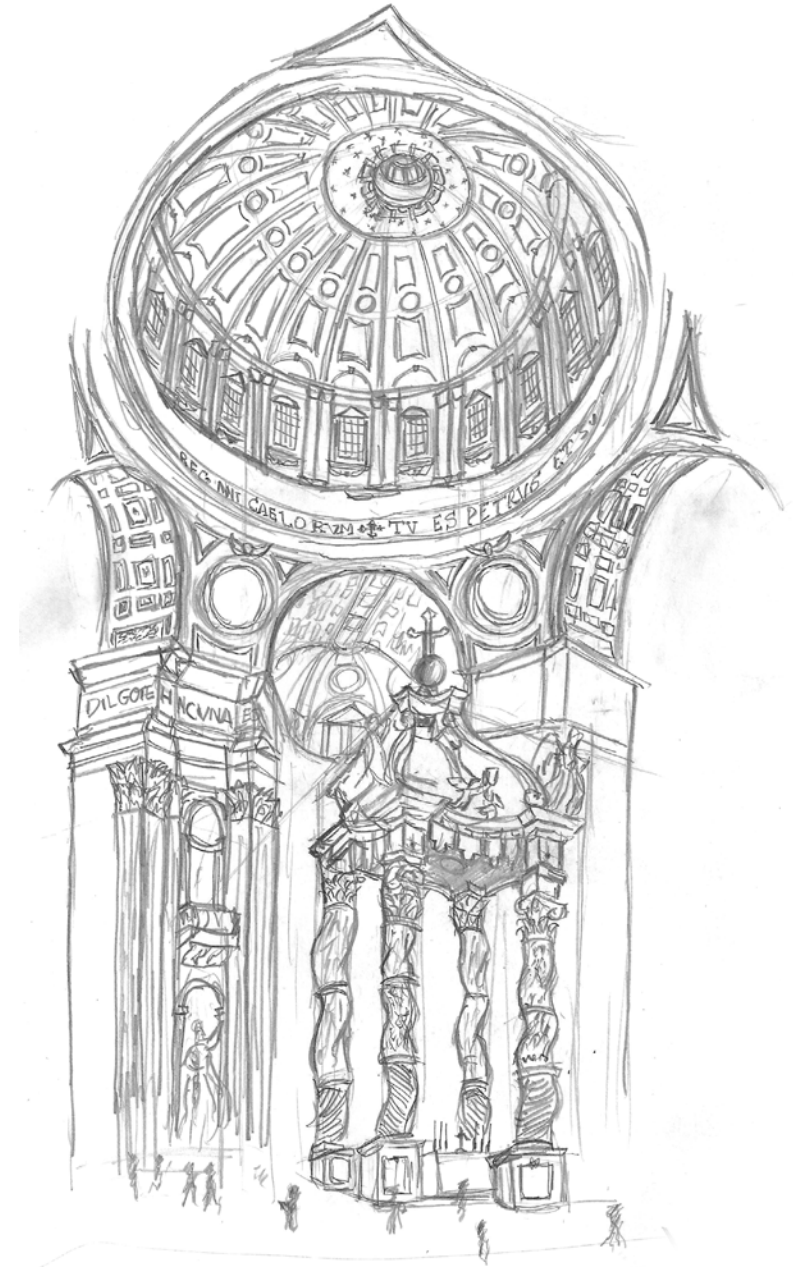
SKETCHES



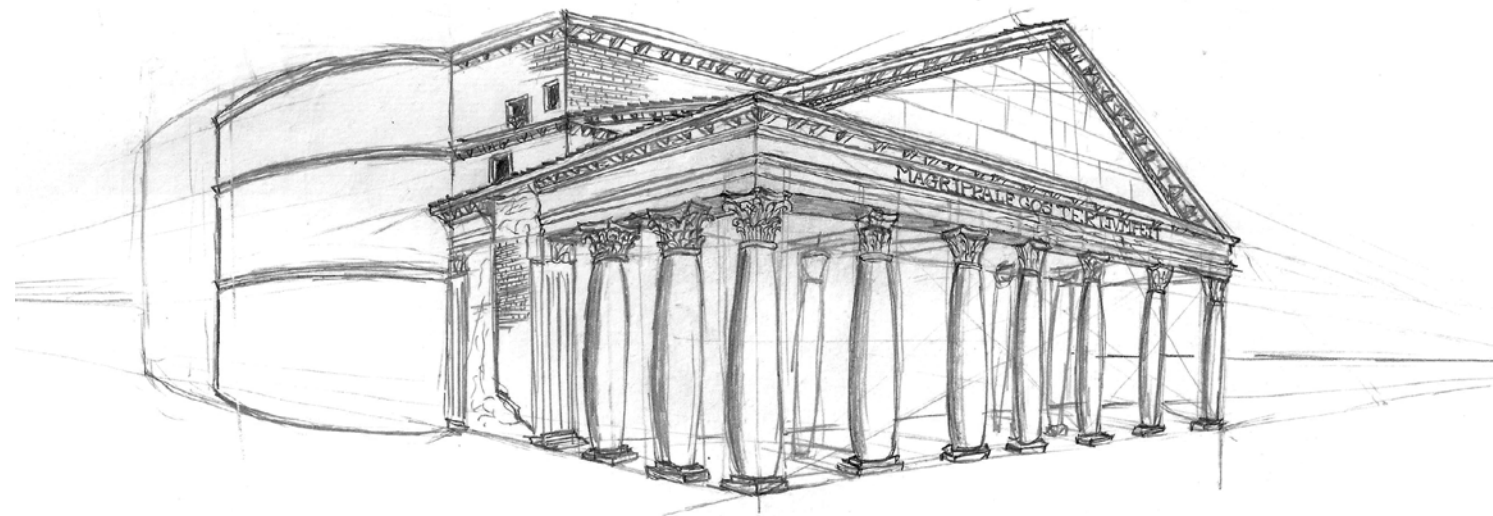
SKETCHES



TRAVEL SKETCHES



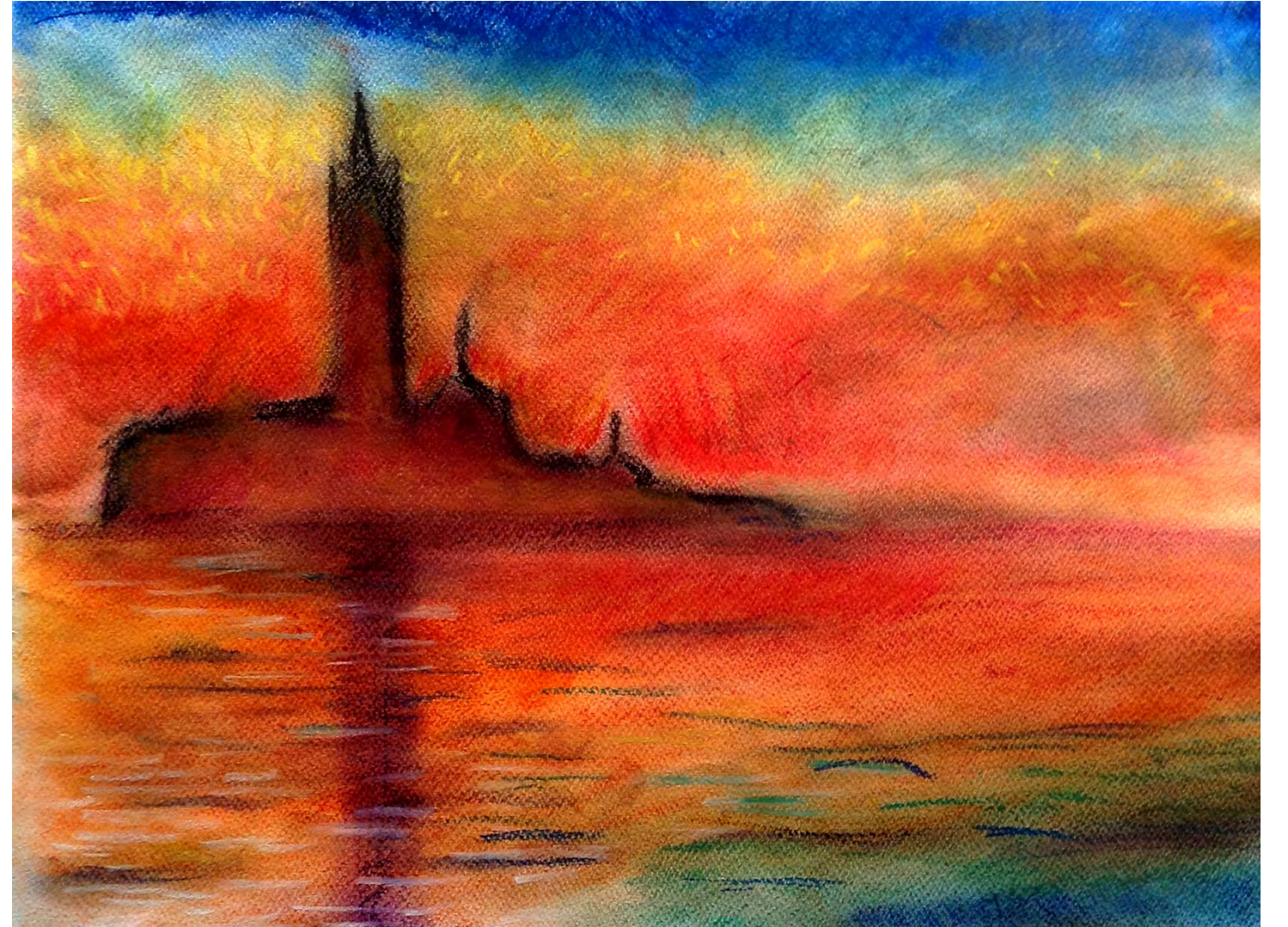
TRAVEL SKETCHES



ART



Study of Renoir, "Doges' Palace, Venice", Oil on canvas.



Study of Monet, "Dusk Venice", Pastels on drawing paper.



Study of Van Gogh, "Starry Night", Pastels on drawing paper.



"Boats on the beach", Oil on canvas.

ART



"Burj Dubai", Oil on canvas.



"Lake in spring", Oil on canvas.

