

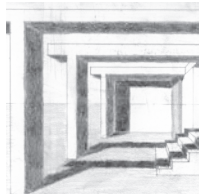


ARCHITECTURAL DESIGN PORTFOLIO

John Hernandez

TABLE OF CONTENTS

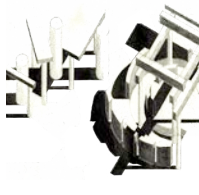
Perspective Journey



Spatial Sequence



Community Gathering Space



Inspirations Collage



Form And Hierarchy



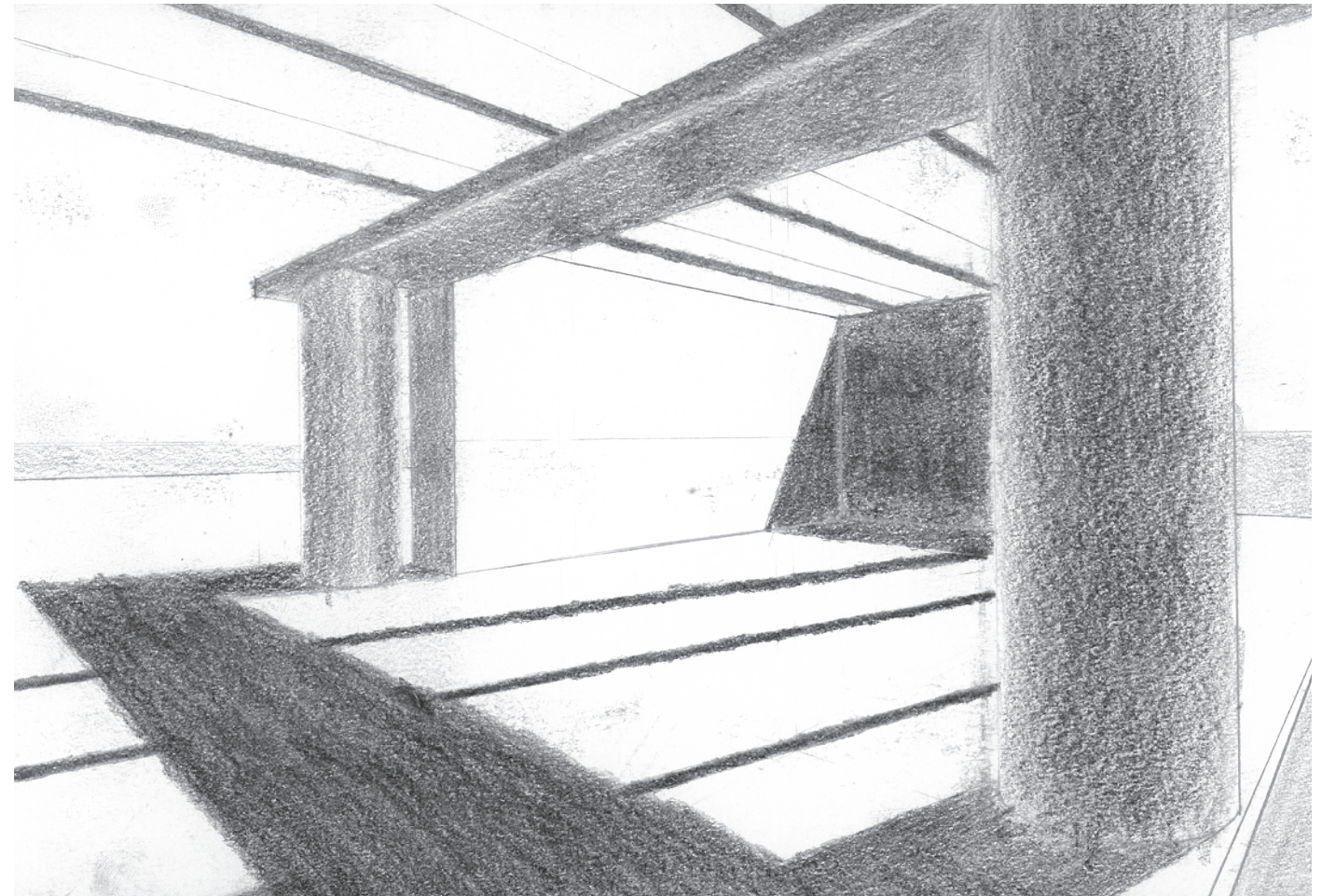
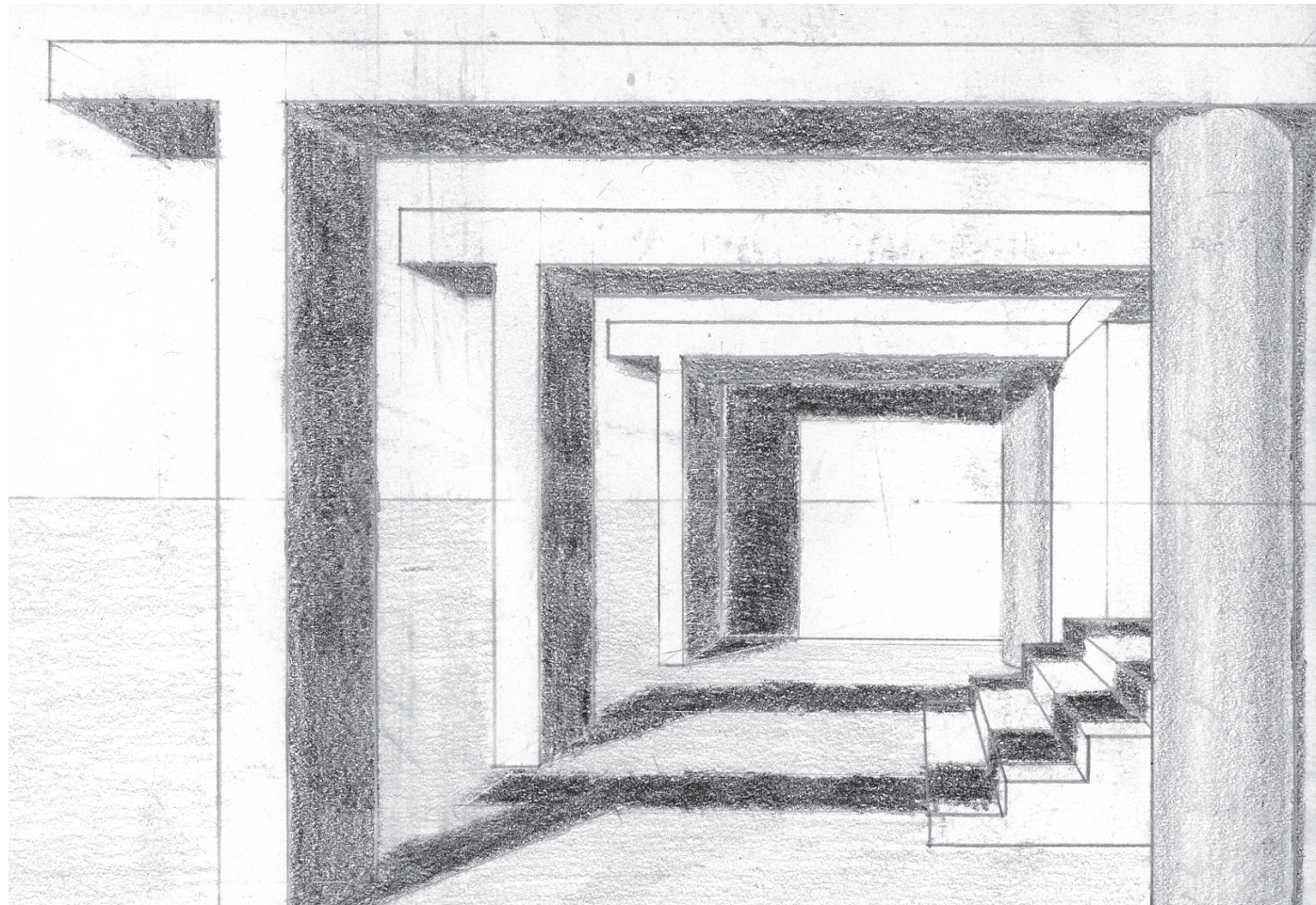
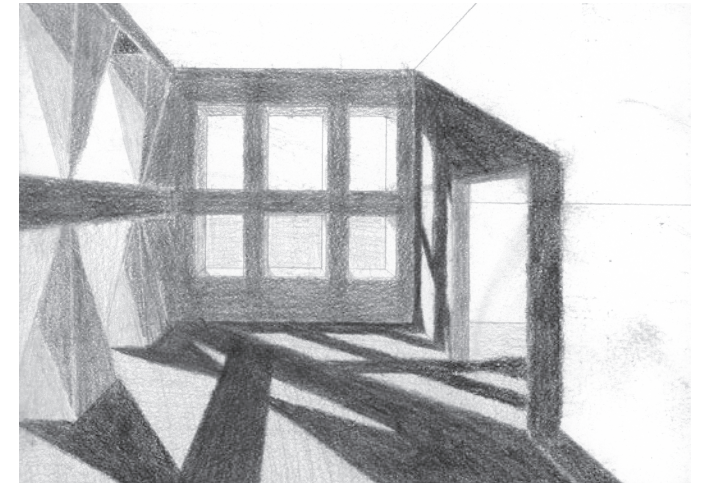
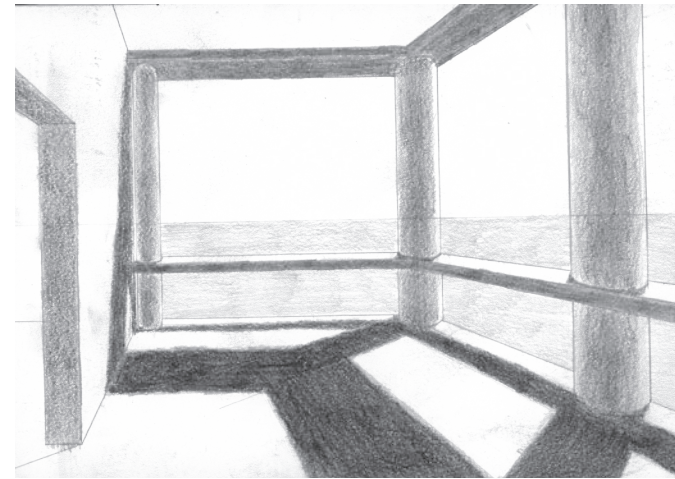
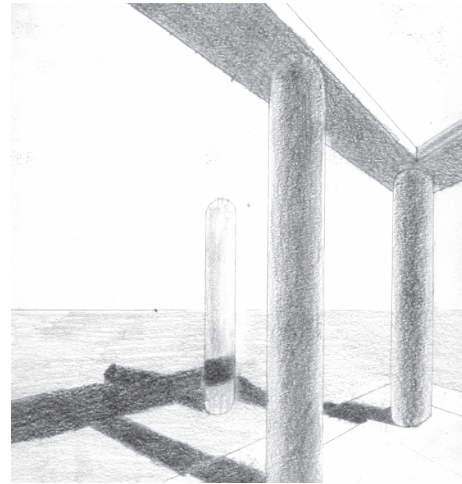
Center For Great Lakes Ecology



PERSPECTIVE JOURNEY

Course: ARCH 1121 Intro to Design
Instructor Jane Ostergaard
Term: Fall 2018
Duration: 3 weeks

Objective: To create a series of spaces to be rendered by hand utilizing the drawing techniques of one point and two point perspective.

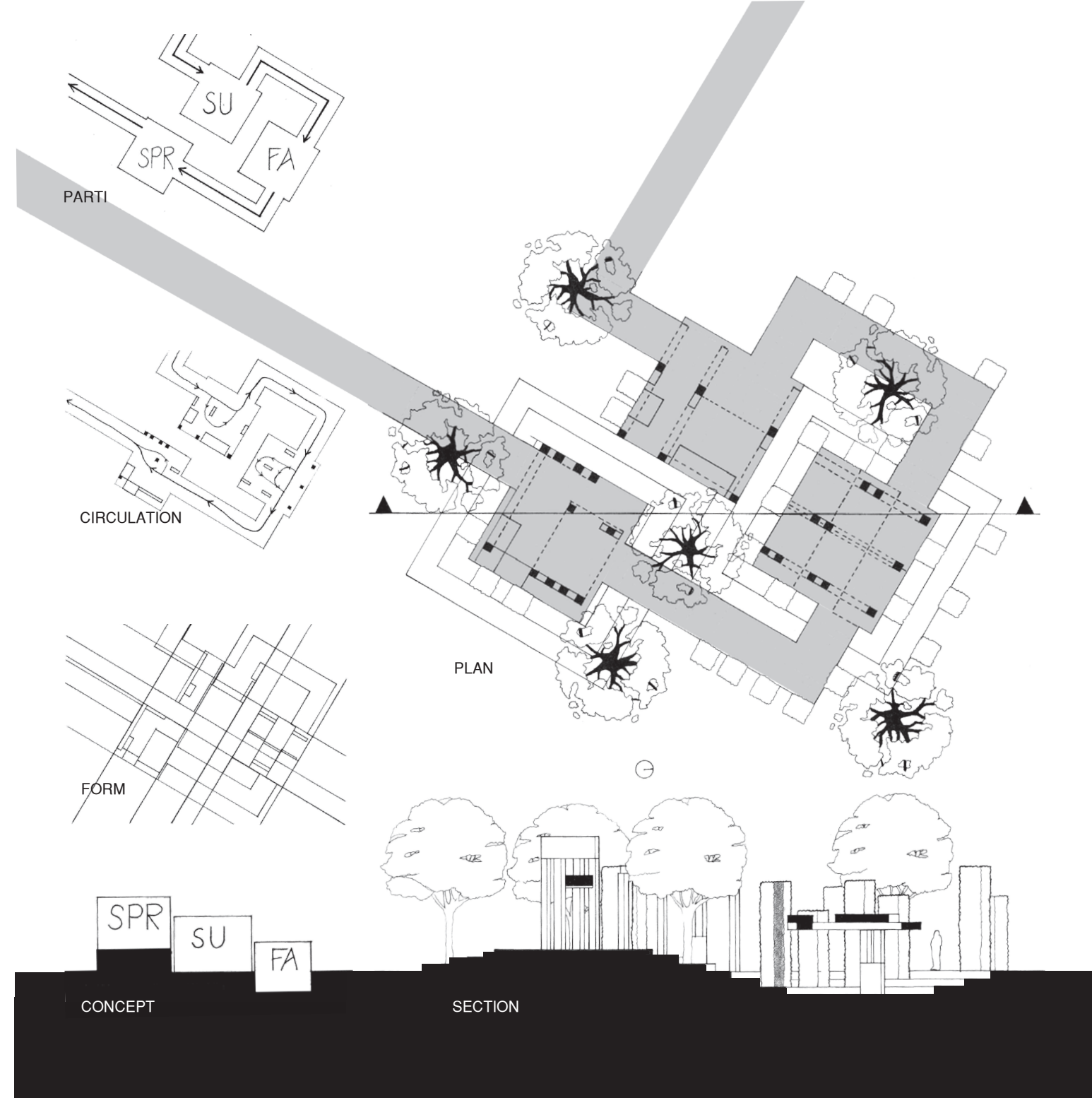
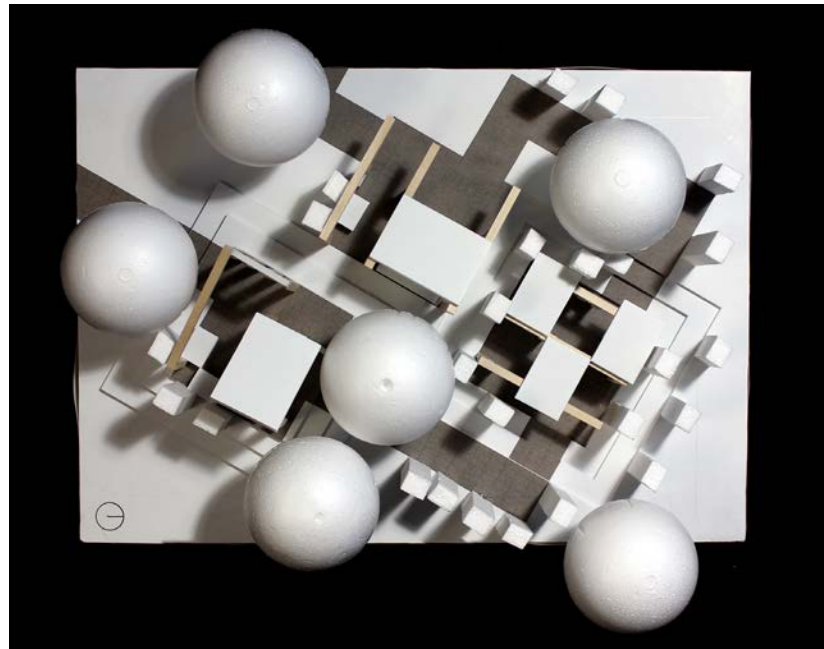


SPATIAL SEQUENCE

Course: ARCH 1131 Intro to Design
Instructor Jane Ostergaard
Term: Spring 2019
Duration: 3 weeks

Objective: To design three spaces that are tied to the seasons of Spring, Summer, and Fall which are connected by a path and utilizing a kit of parts to create a unified composition.

Concept: The design is an exploration of the highs and lows of the seasonal structure, meaning, the structure from spring to fall in a sequential order. Each season is located at a different elevation on grade based on its position in the cycle. Fall is located at the lowest elevation, to accentuate it being at the end of the cycle; Summer is located on grade, to show its position as the midpoint of the cycle; and Spring is located at the highest elevation, to show that it is the starting point of the cycle.

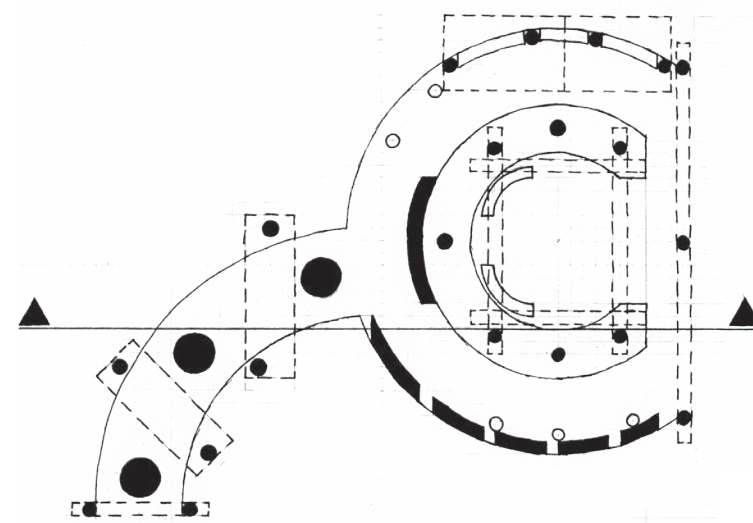


COMMUNITY GATHERING SPACE

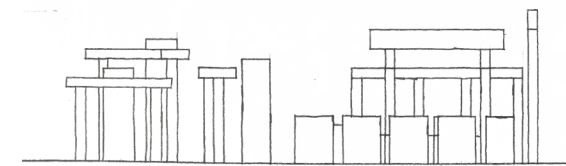
Course: ARCH 1131 Intro to Design
Instructor: Jane Ostergaard
Term: Spring 2019
Duration: 2 Weeks

Objective: To design a social space that accommodates for a number of people occupying it. This is done by utilizing the following elements; an entry zone, gathering space, and pathway.

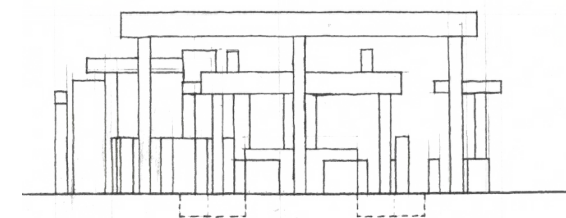
Concept: The design takes inspiration from the verticality of the surrounding nature elements to create a feeling of being immersed in the space. This is done by using vertical elements of varying thicknesses and spacings to create a sense of anticipation as one progresses along the entry path towards the site, as well as providing roofing elements that serve as a canopy like shading element.



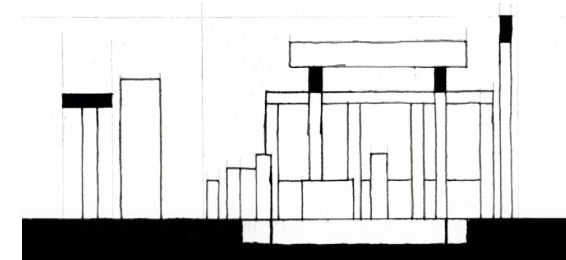
Plan



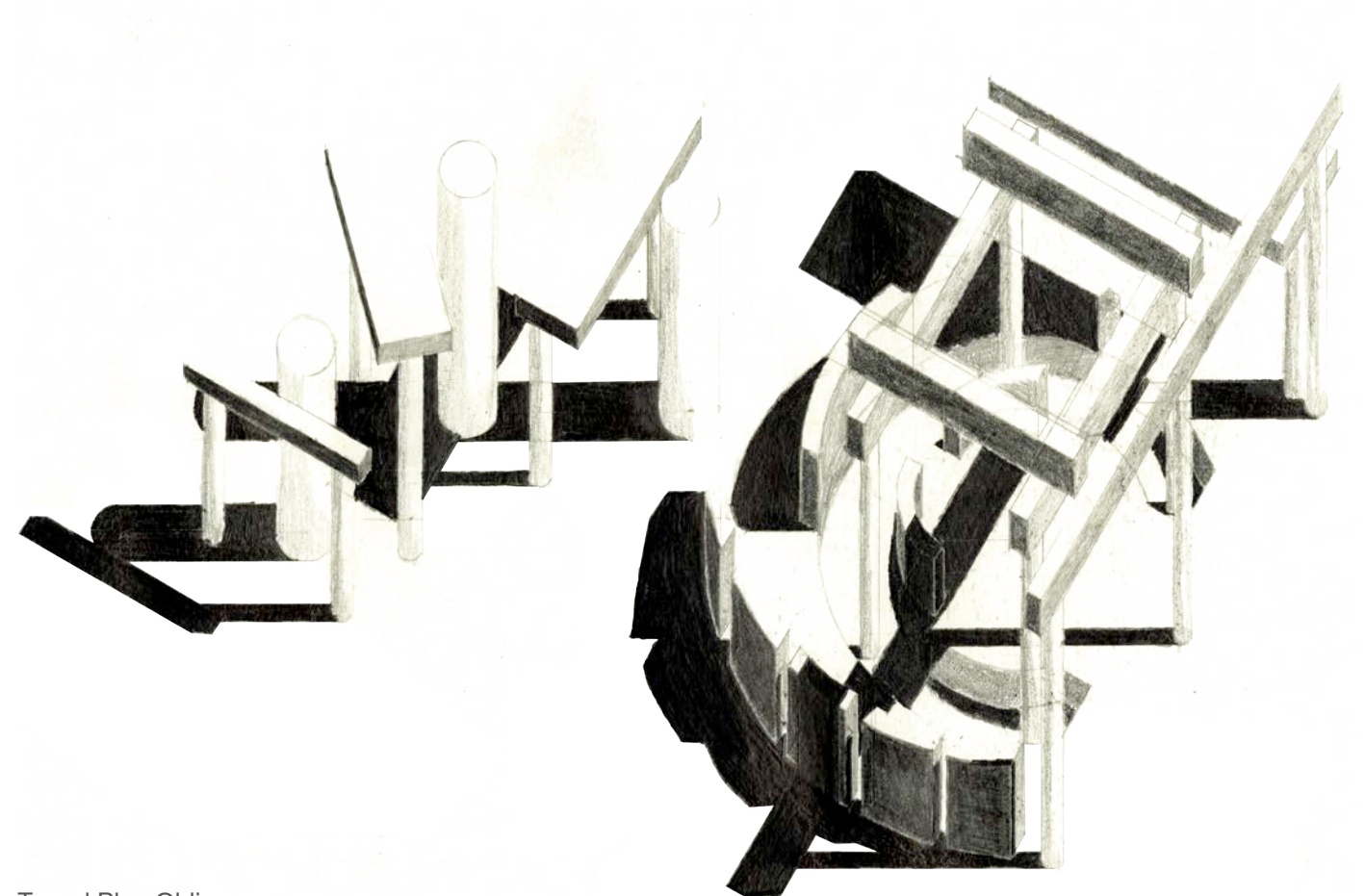
South Elevation



East Elevation



Section Cut



Toned Plan Oblique

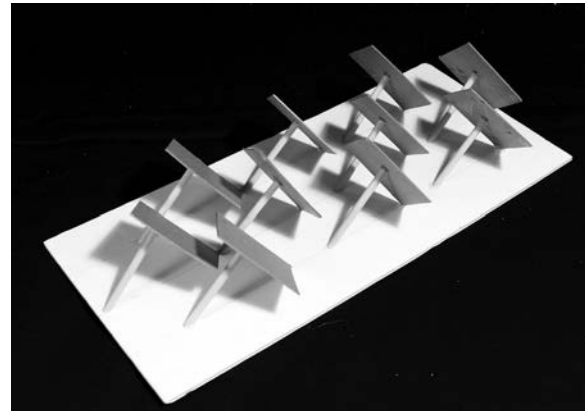


INSPIRATIONS COLLAGE

Course: ARCH 2201 Architectural Design
Instructor: Mark Pearson
Term: Fall 2019
Duration: 2 weeks

Objective: To create a composition that takes inspiration from the urban environment with the inclusion of images, and materials.

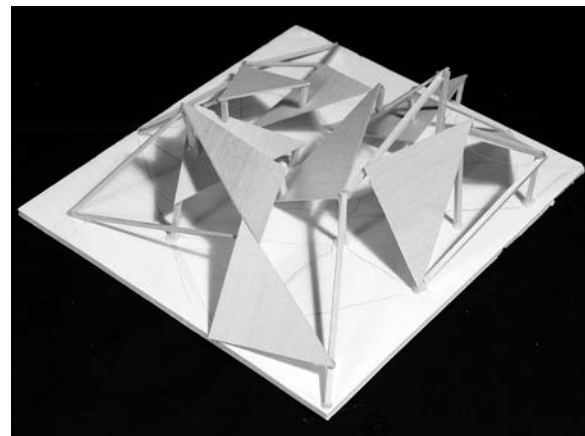
Concept: The composition makes an effort showcasing the experience of traversing an urban environment. The experience includes the changing of perspective as one traverses through a city along with the amount of sights to be seen. This is accomplished by the use of triangular forms to provide a range of surfaces for images while also serving as a framing device, as well as, the use of an acrylic material to serve as blockers which reinforce the idea of movement and framed views



Study Model 1



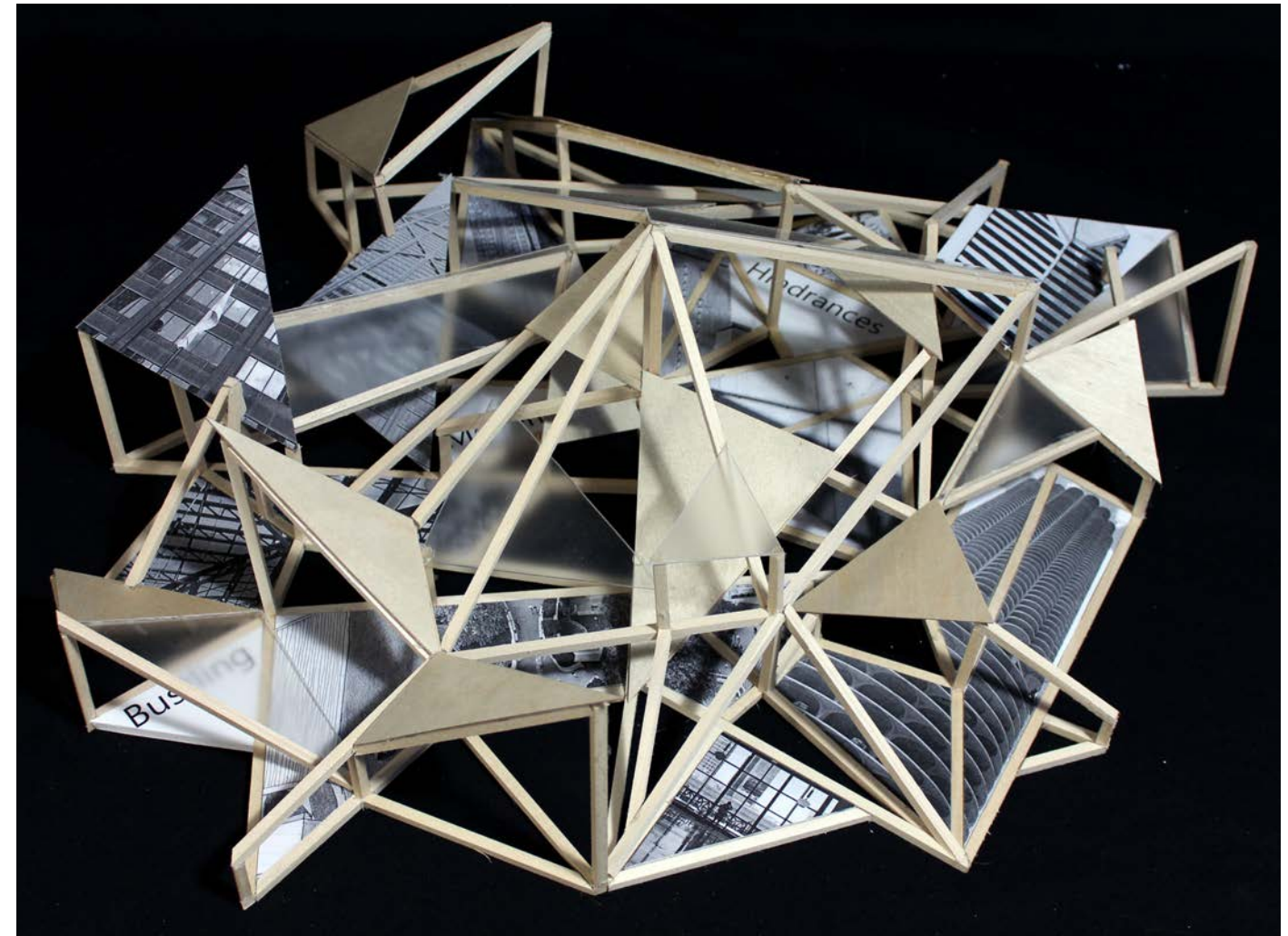
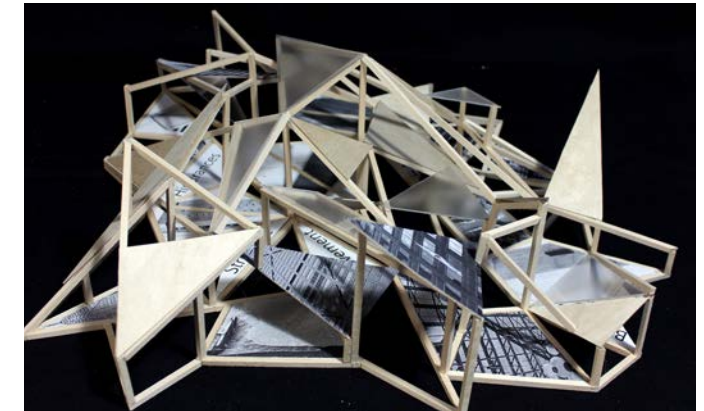
Study Model 2



Study Model 3



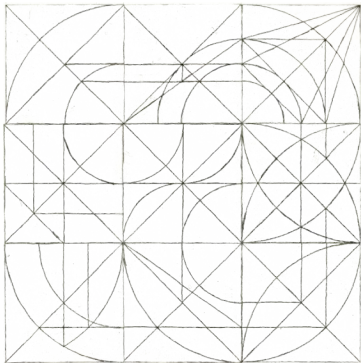
Study Model 4



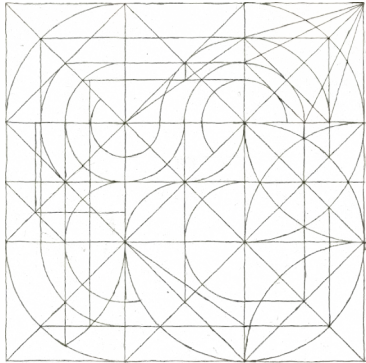
FORM AND HIERARCHY

Course: ARCH 1131 Intro to Design
Instructor: Jane Ostergaard
Term: Spring 2019
Duration: 4 weeks

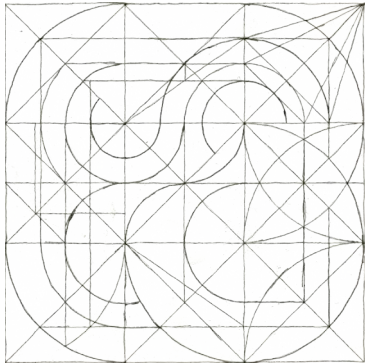
Objective: To create a composition of lines and arcs that celebrates both symmetry and asymmetry. This is to be achieved by implimenting hierarchy and tone to strengthen and give depth to the two-dimensional compositions.



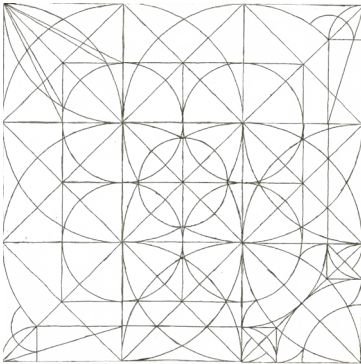
Asymmetry Collage



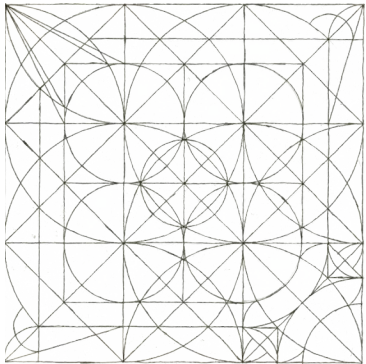
Asymmetry Additional Lines



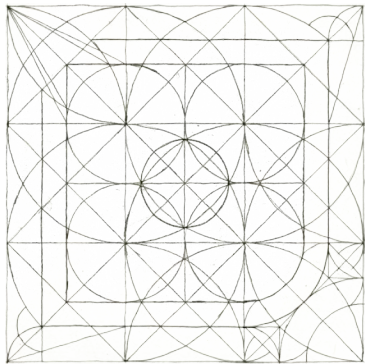
Asymmetry Hierarchy



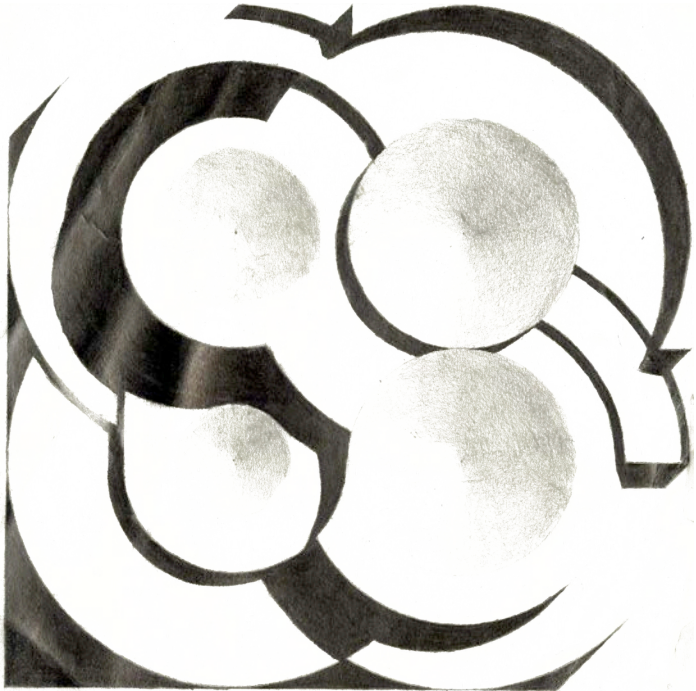
Symmetry collage



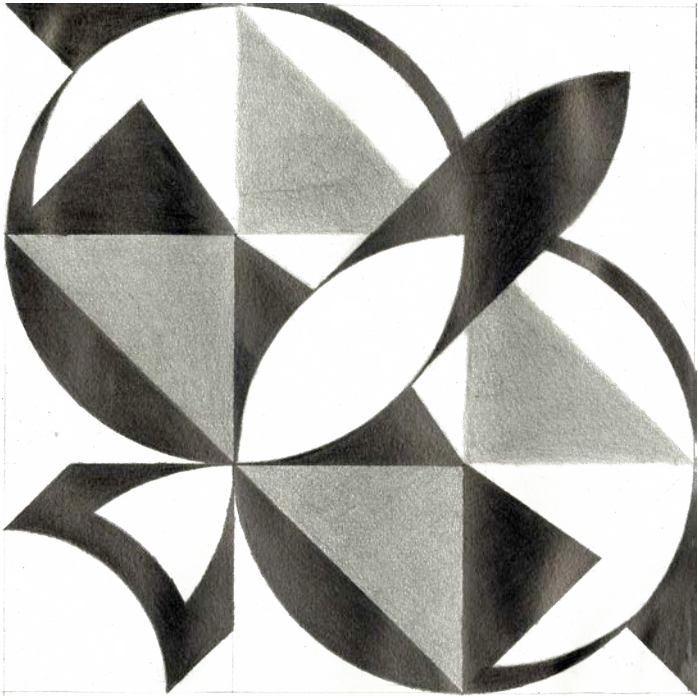
Symmetry Additional Lines



Symmetry Hierarchy



Asymmetry Tonal Drawing



Symmetry Tonal Drawing

CENTER FOR GREAT LAKES ECOLOGY

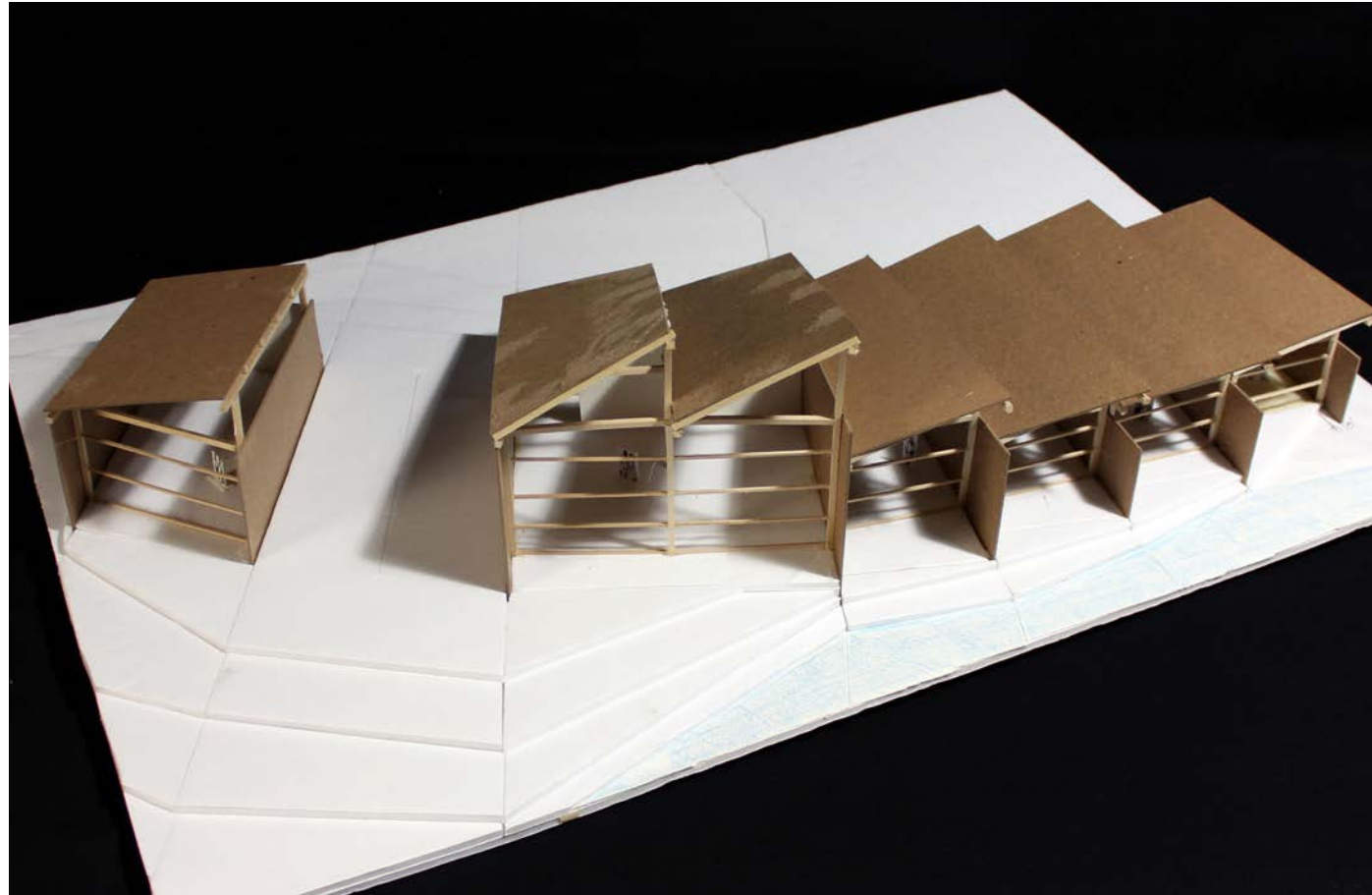
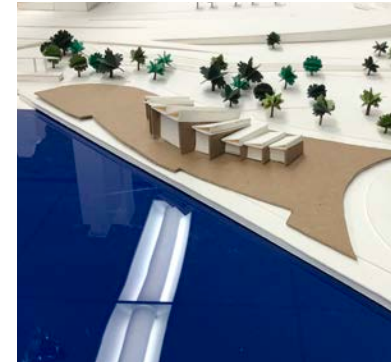
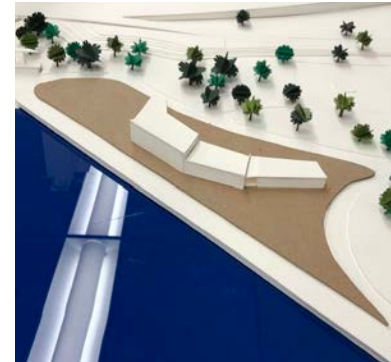
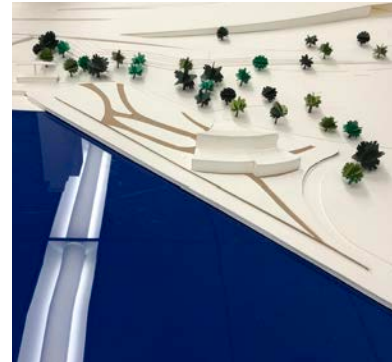
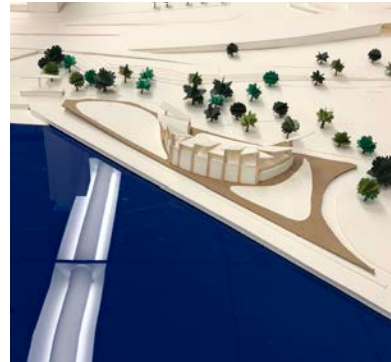
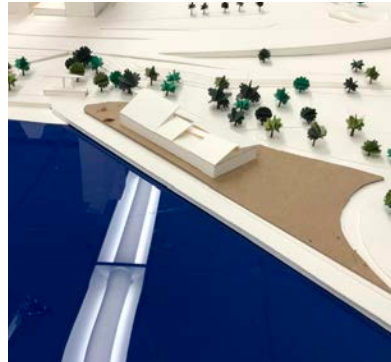
Course: ARCH 2201 Architectural Design
Instructor: Mark Pearson
Term: Fall 2019
Duration: 12 weeks

Objective: To design an ecology center for the Great Lakes located on Lakeshore Drive in Chicago, Illinois. The ecology center must follow a program that requires an exhibit space, cafe, interactive lab, education spaces, and support spaces for faculty.

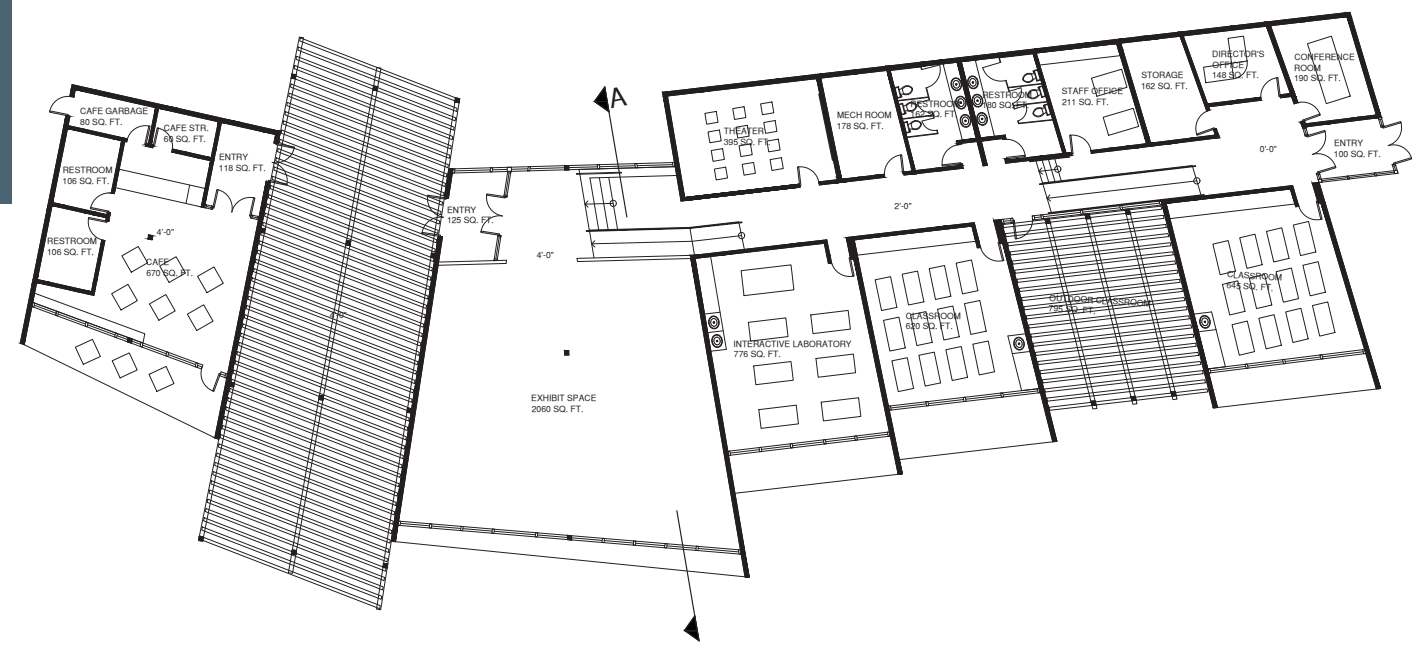
Concept: The design seeks to enhance the views of the lakefront, accomplished through the framing of views, as well as manipulating the sun exposure on the site to have a commentary on shadow patterns. This is accomplished by means of a trellis which serves both as an entry threshold as well as an indicator of outdoor spaces along with acting as a shading element. The building itself seeks to provide a feeling of progression and transition by means of a heavy circulation procession and level changes throughout the structure as one passes through.



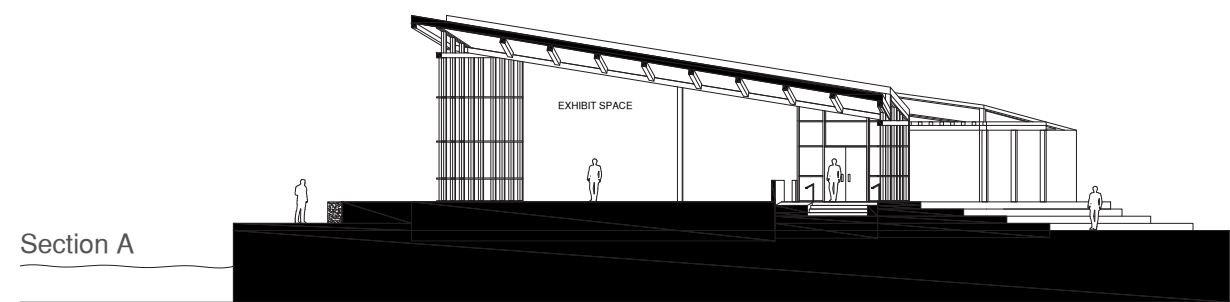
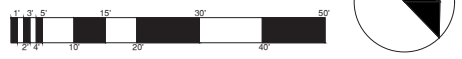
GREAT LAKES ECOLOGY DESIGN DEVELOPMENT



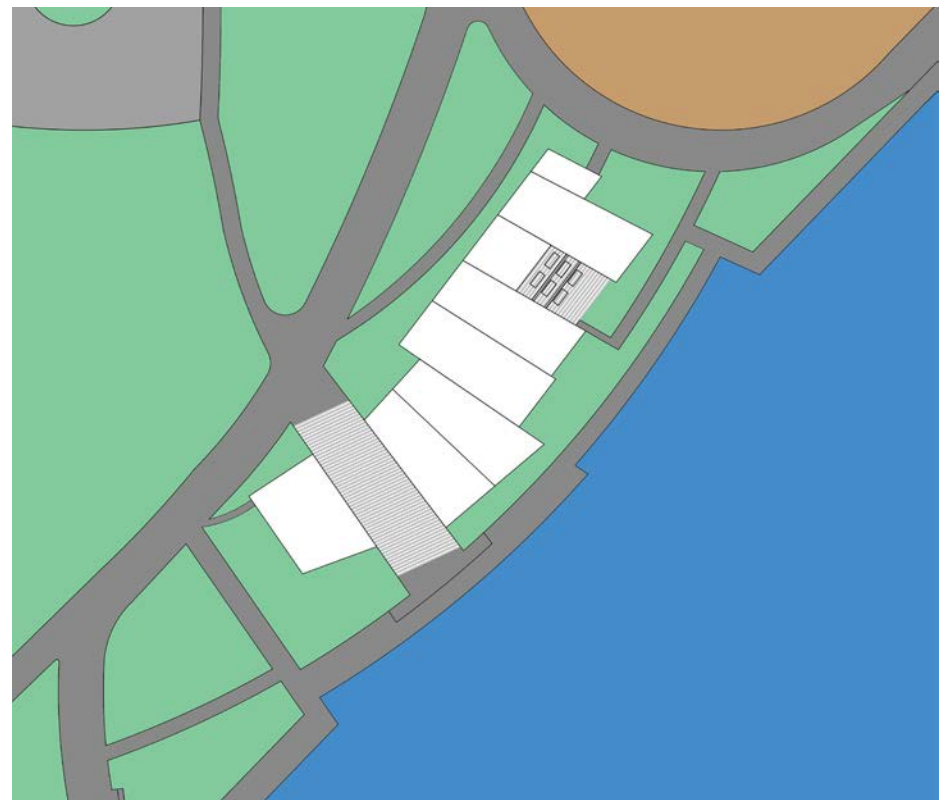
DRAWINGS AND DIAGRAMS



PLAN



Section A



Site Plan



Circulation Diagram



Concept Diagram

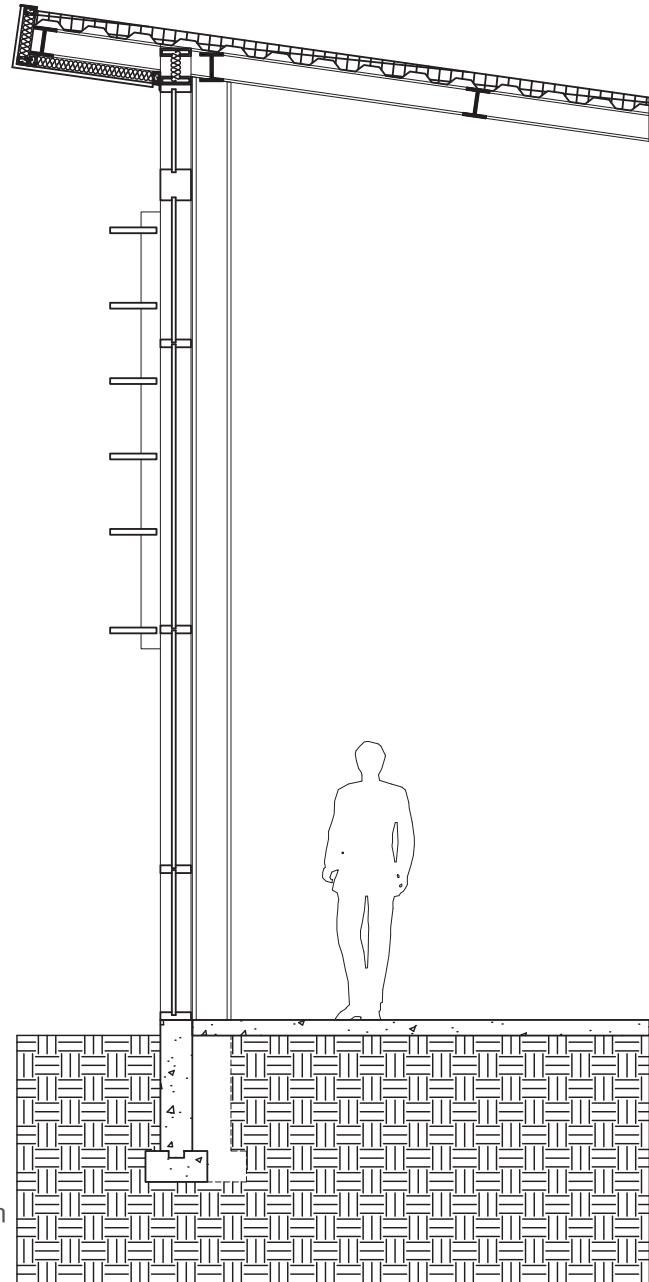


Parti Diagram

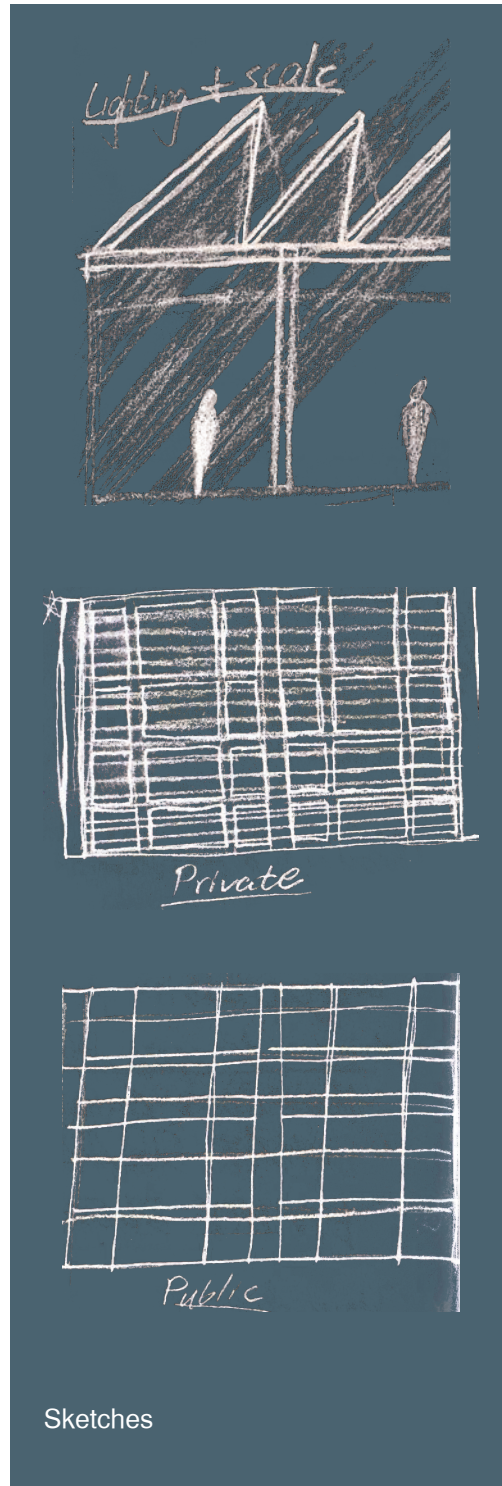


Structure Diagram

DETAIL EXPLORATION



Detail Section



Sketches



