

Portfolio

Jennifer Emmert
College of DuPage
Architecture
2015-2016

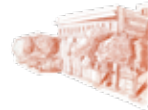
Table of Contents



Rietveld Schröder House Model.....4



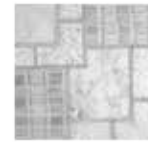
Duplo Orthographic and Paraline Drawings.....6



Sketches of Glen Ellyn, IL.....8



Still Life Project.....10



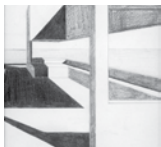
Texture Project.....12



Color Composition.....14



Barcelona Pavilion.....16



Perspective Journey.....18



Assemblage, Hierarchy, and Form Project.....20



Community Gathering Space.....22



Spatial Sequence.....24



Nature of Materials.....26



Chicago Sketches and Photography.....28



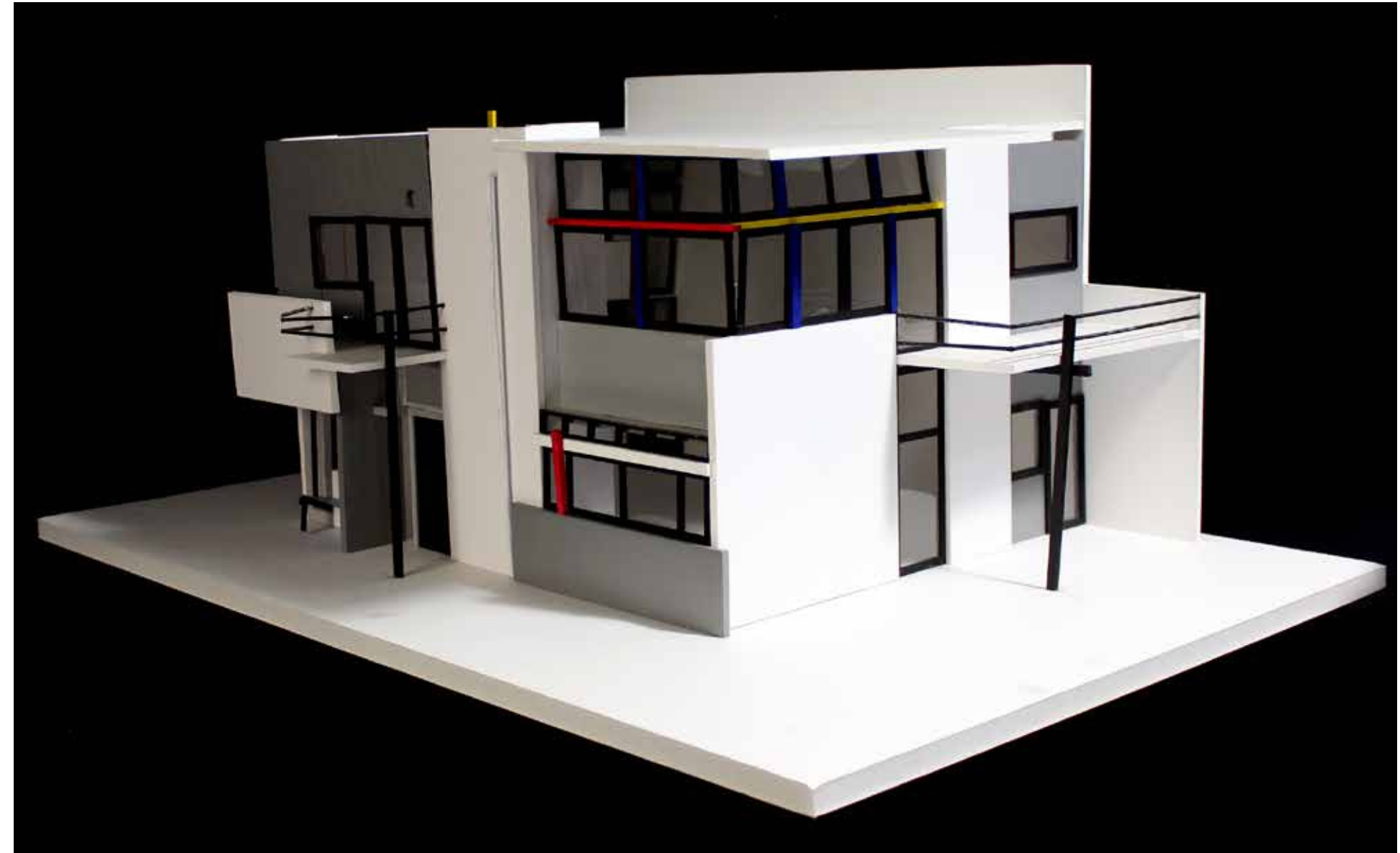
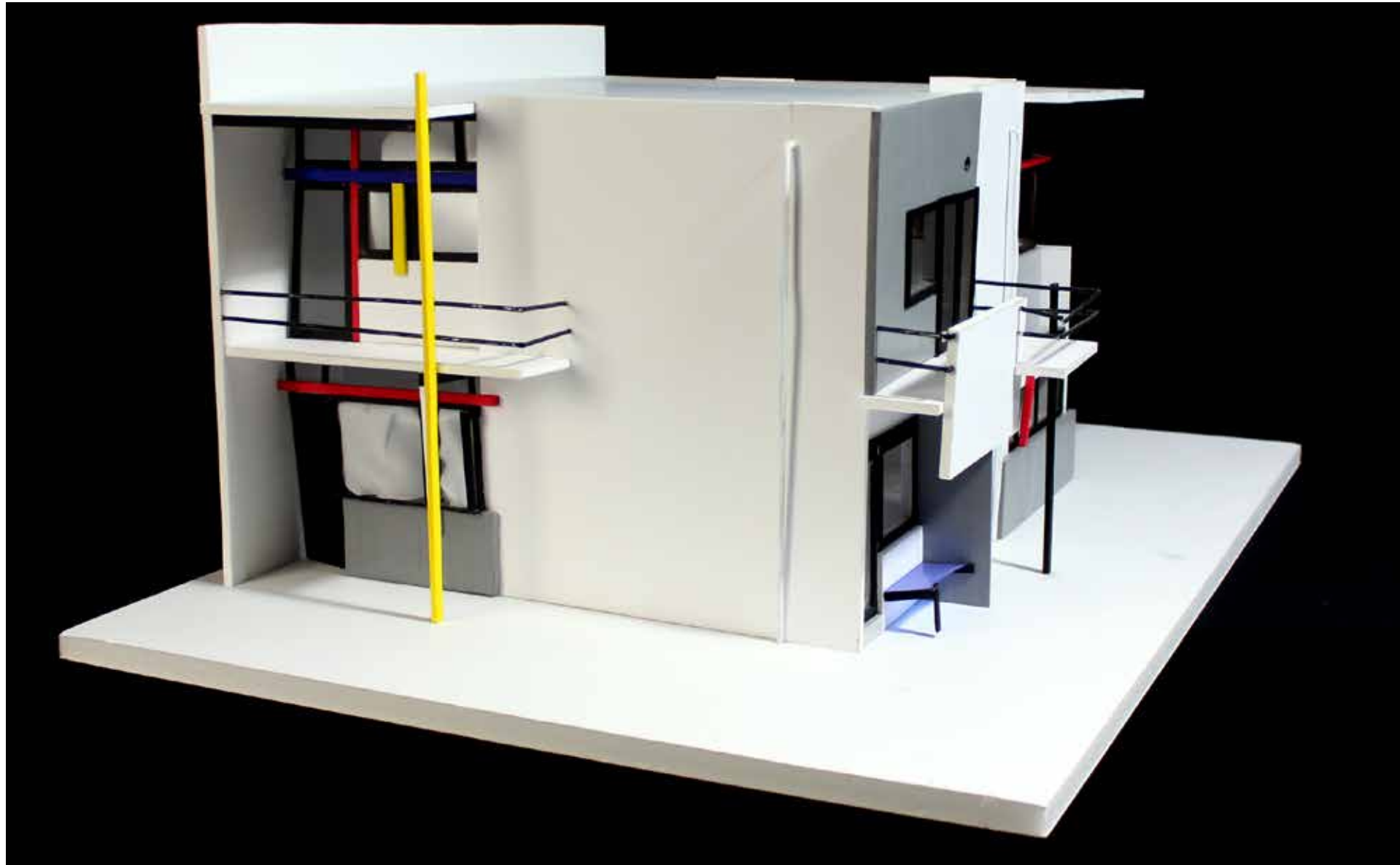
Inspirations Collage.....30



Ecology Center.....32

Rietveld Schröder House Model

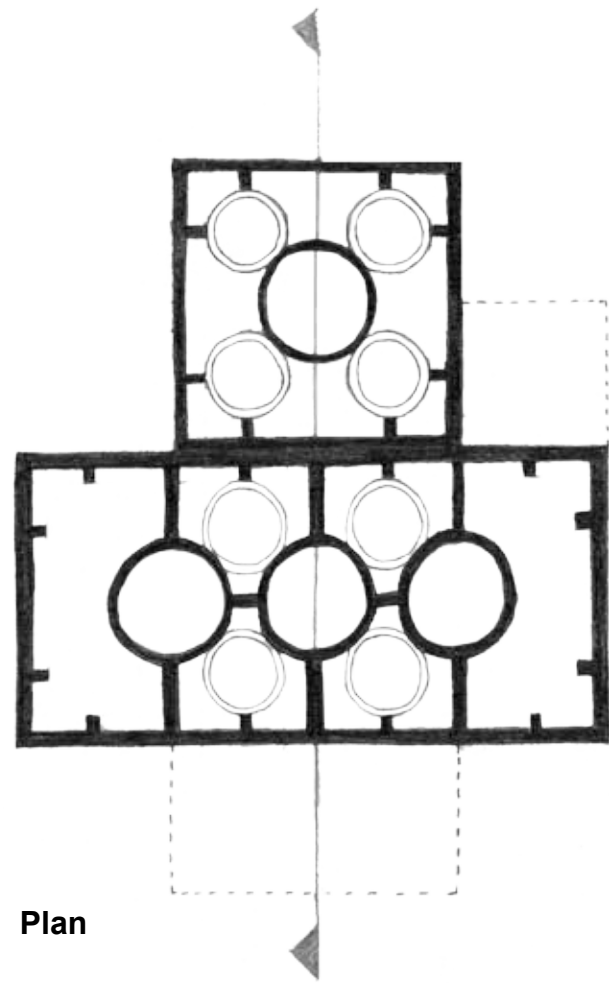
Objective: To build a model of an important building in history.



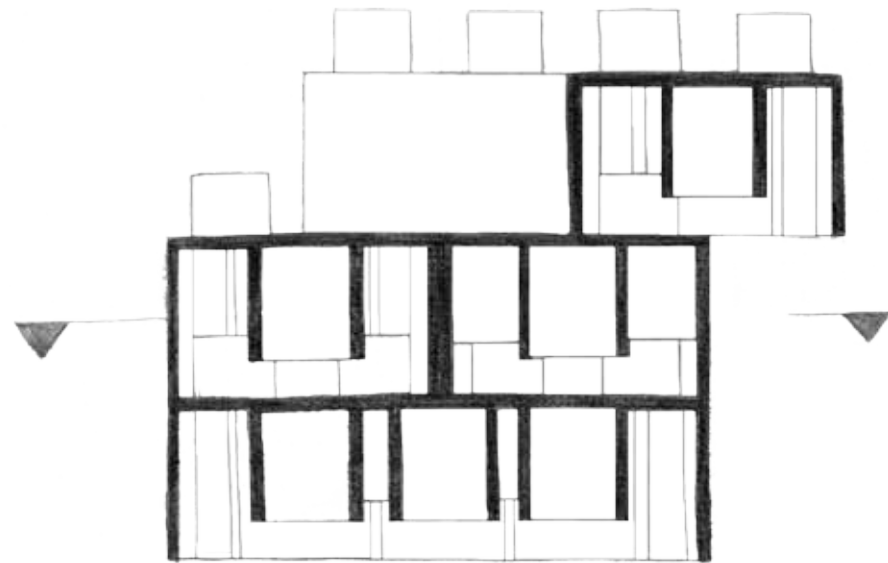
Duplo Orthographic and Paraline Drawings

Objective: To produce a set of free-hand drawings of duplo blocks using orthographic and paraline views.

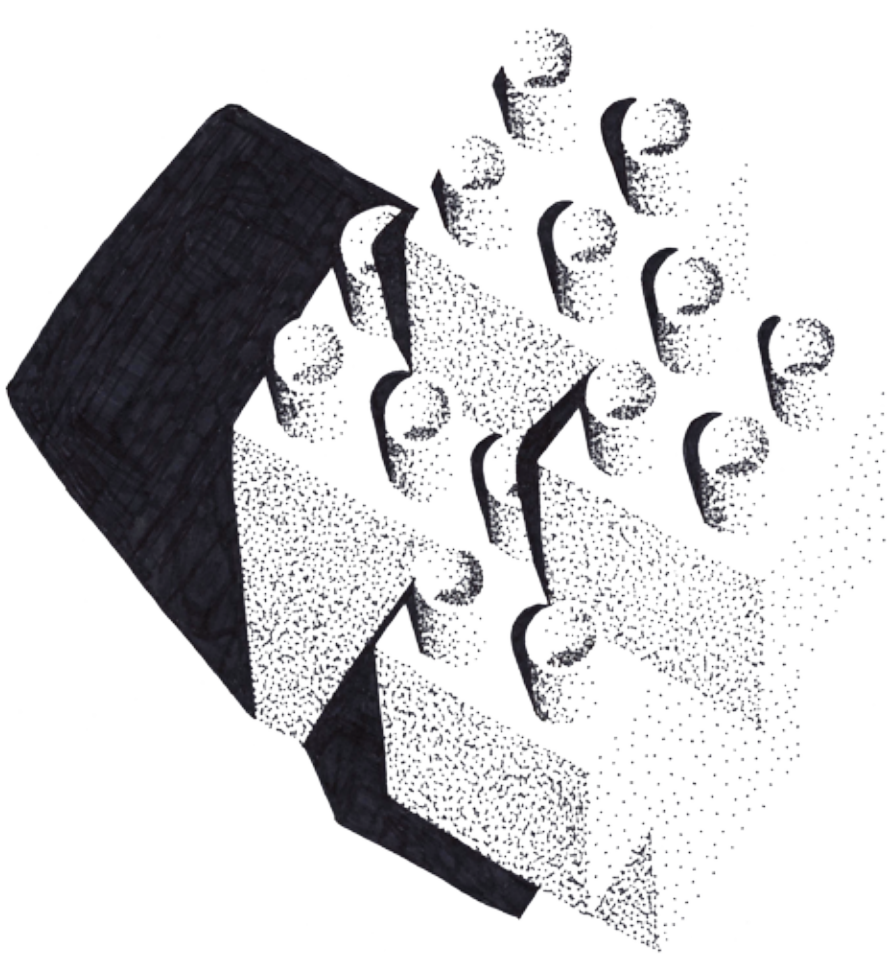
Concept: To arrange the duplo blocks to create effective shadows and unique views.



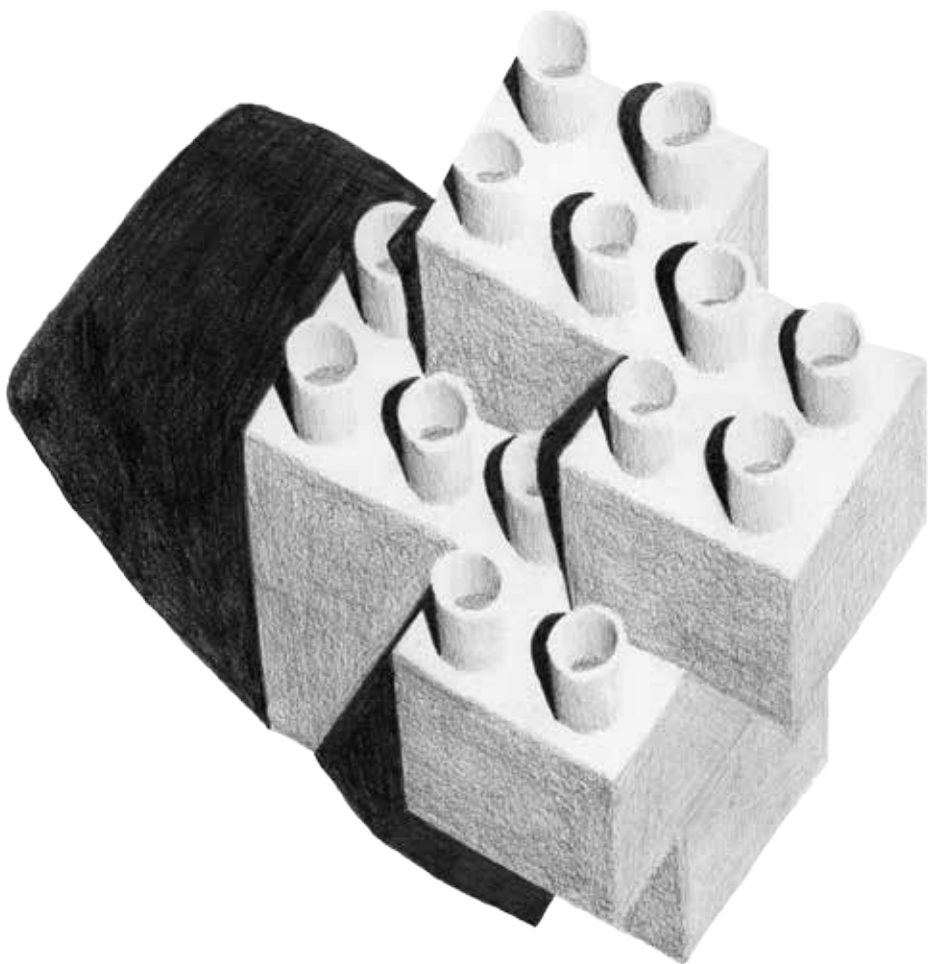
Plan



Section



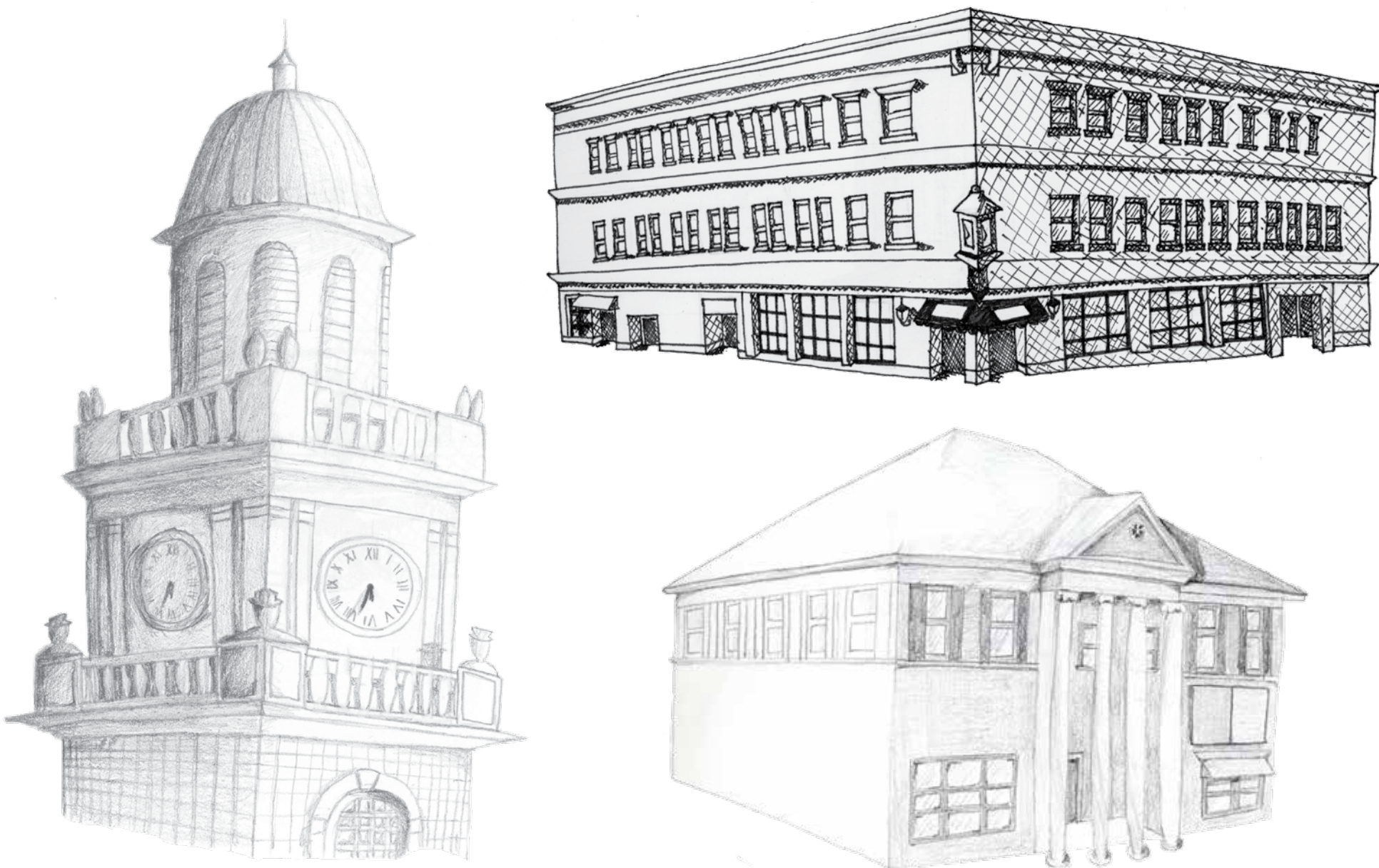
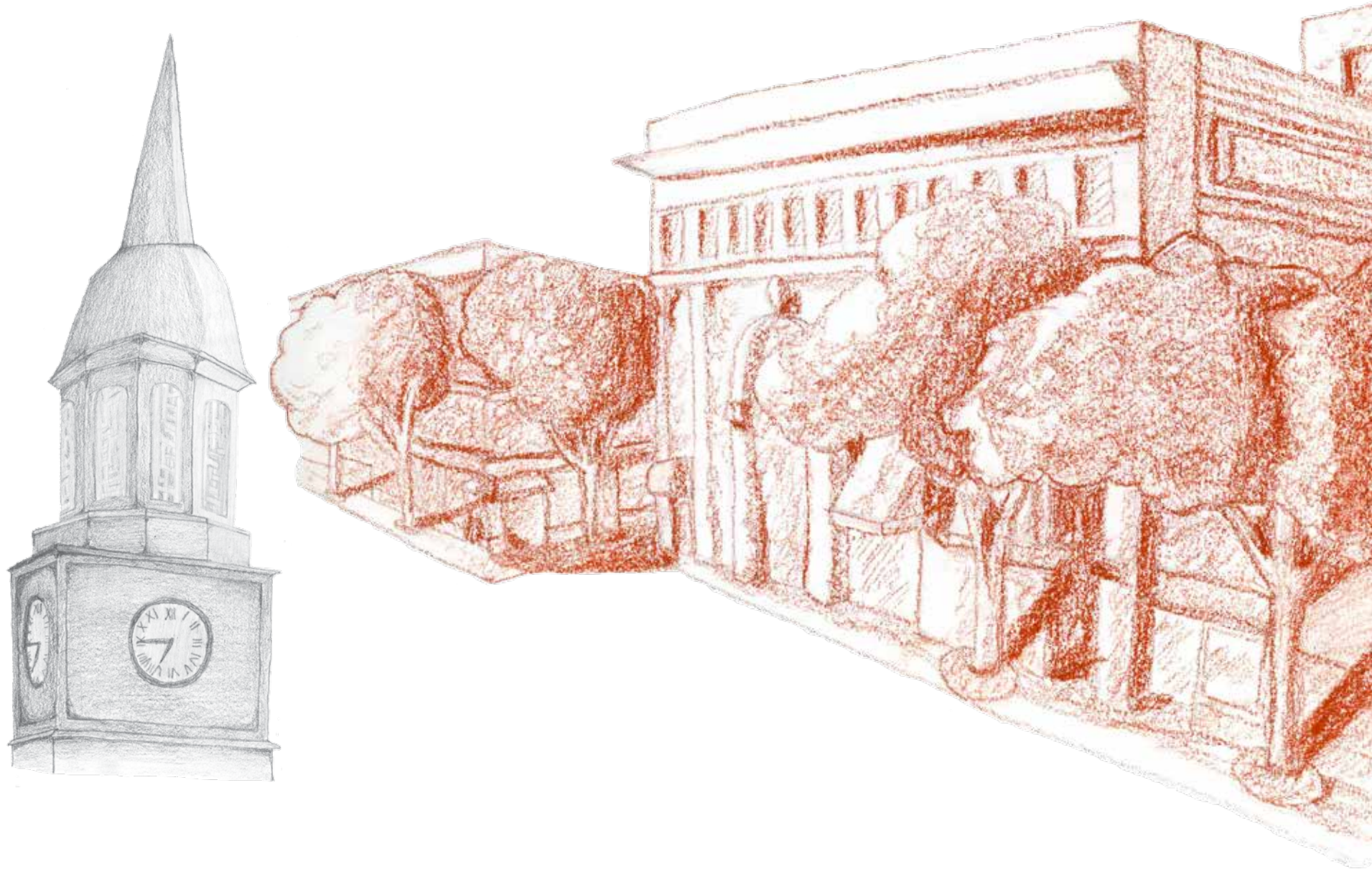
Ink Tone



Pencil Tone

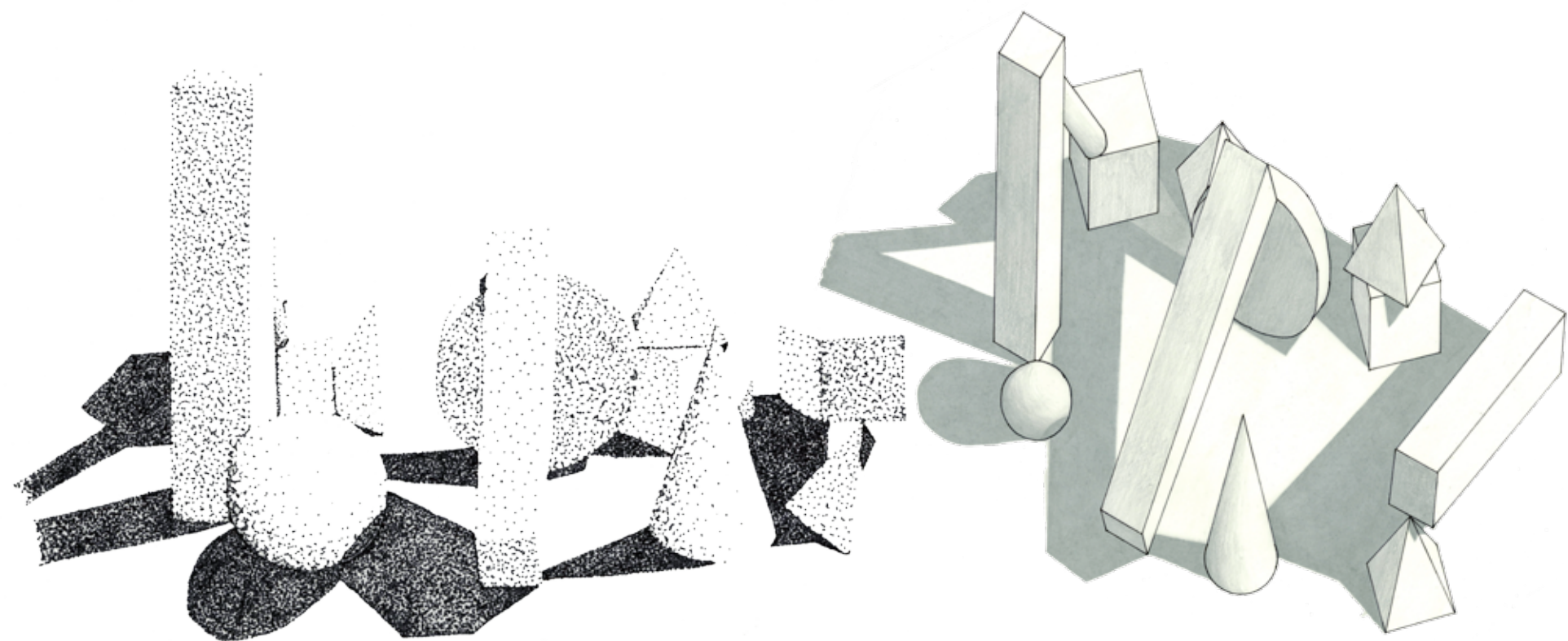
Sketches of Downtown Glen Ellyn, IL

Objective: To practice sketching buildings using different media.



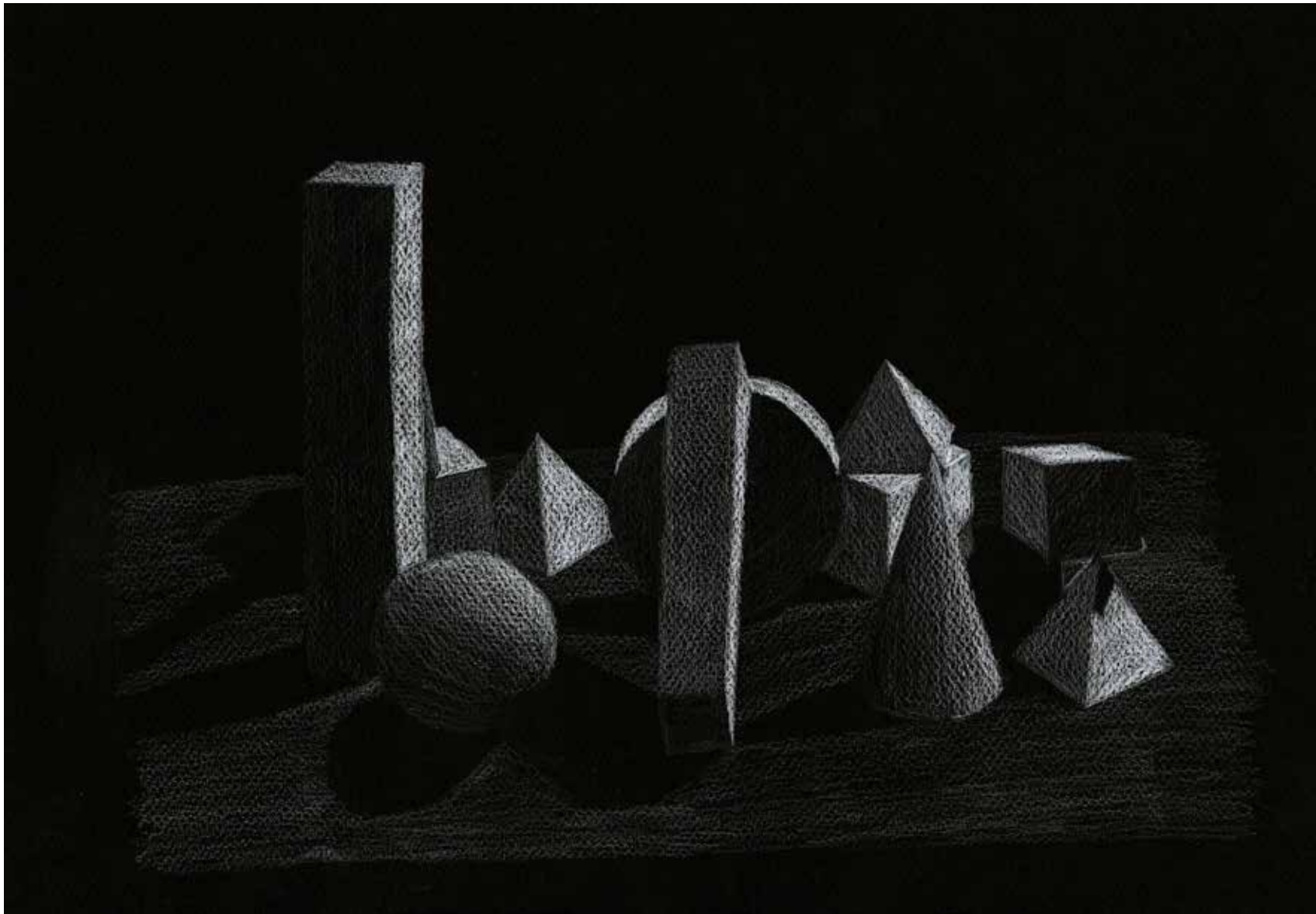
Still Life Project

Objective: To create a composition with a group of shapes and then draw the composition using different media.



Stippling with Ink

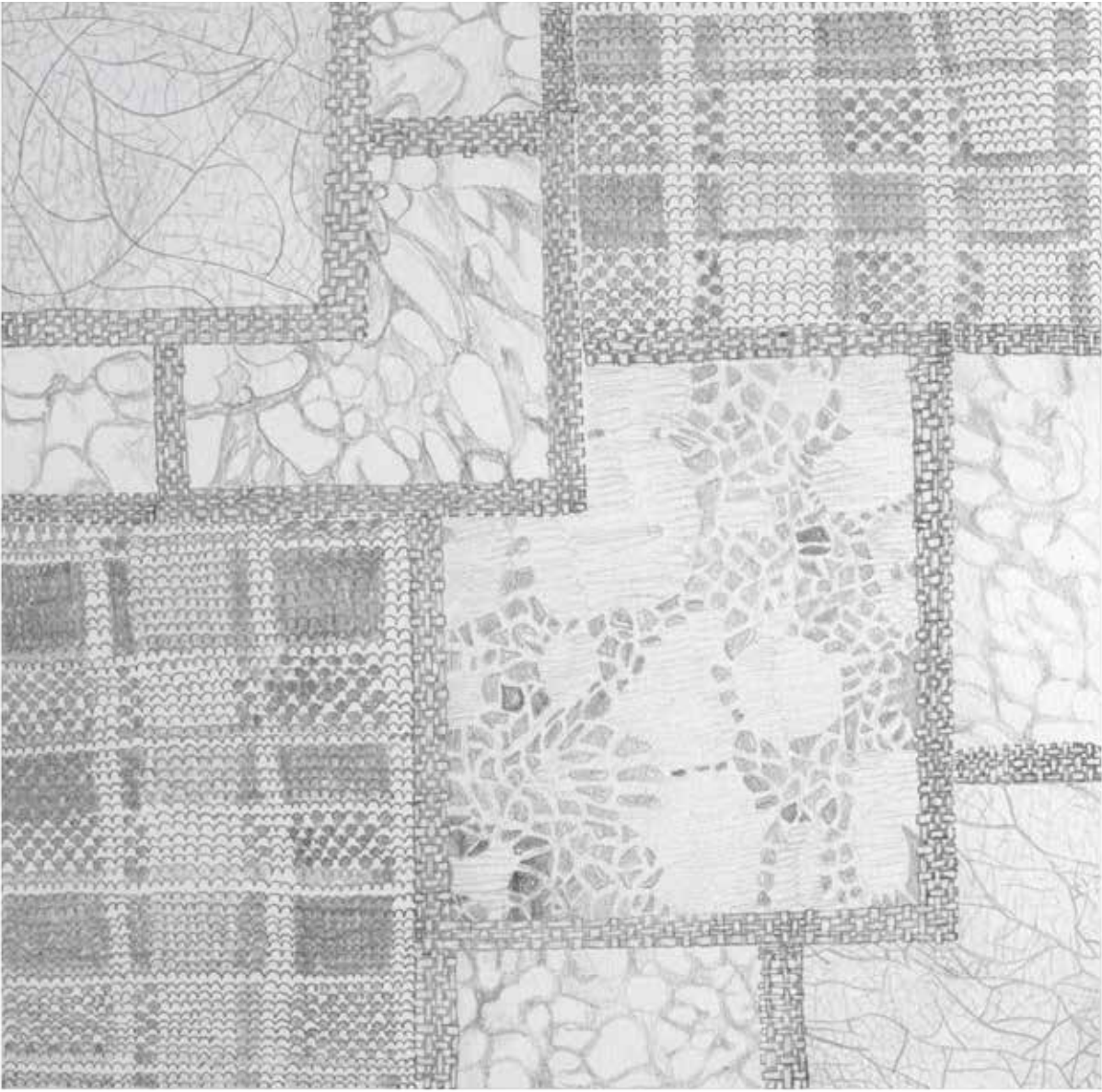
Plan Oblique



White Pencil

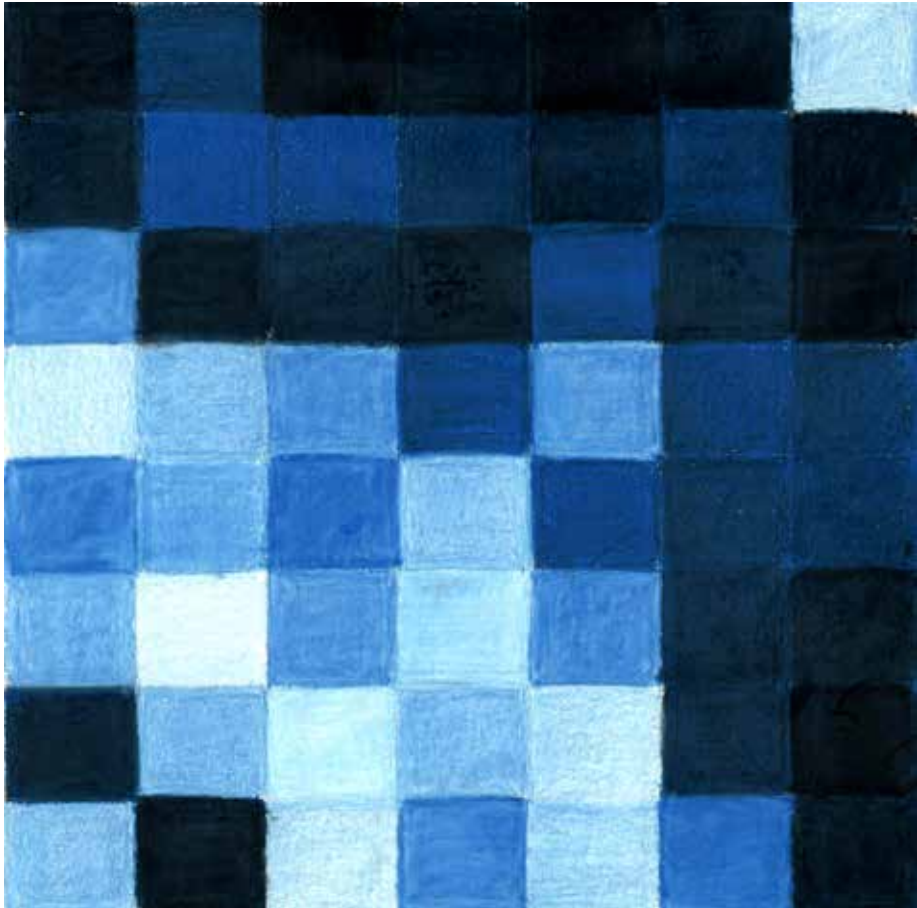
Texture Project

Objective: To create a two-dimensional collage and draw the composition with various techniques.



Color Composition

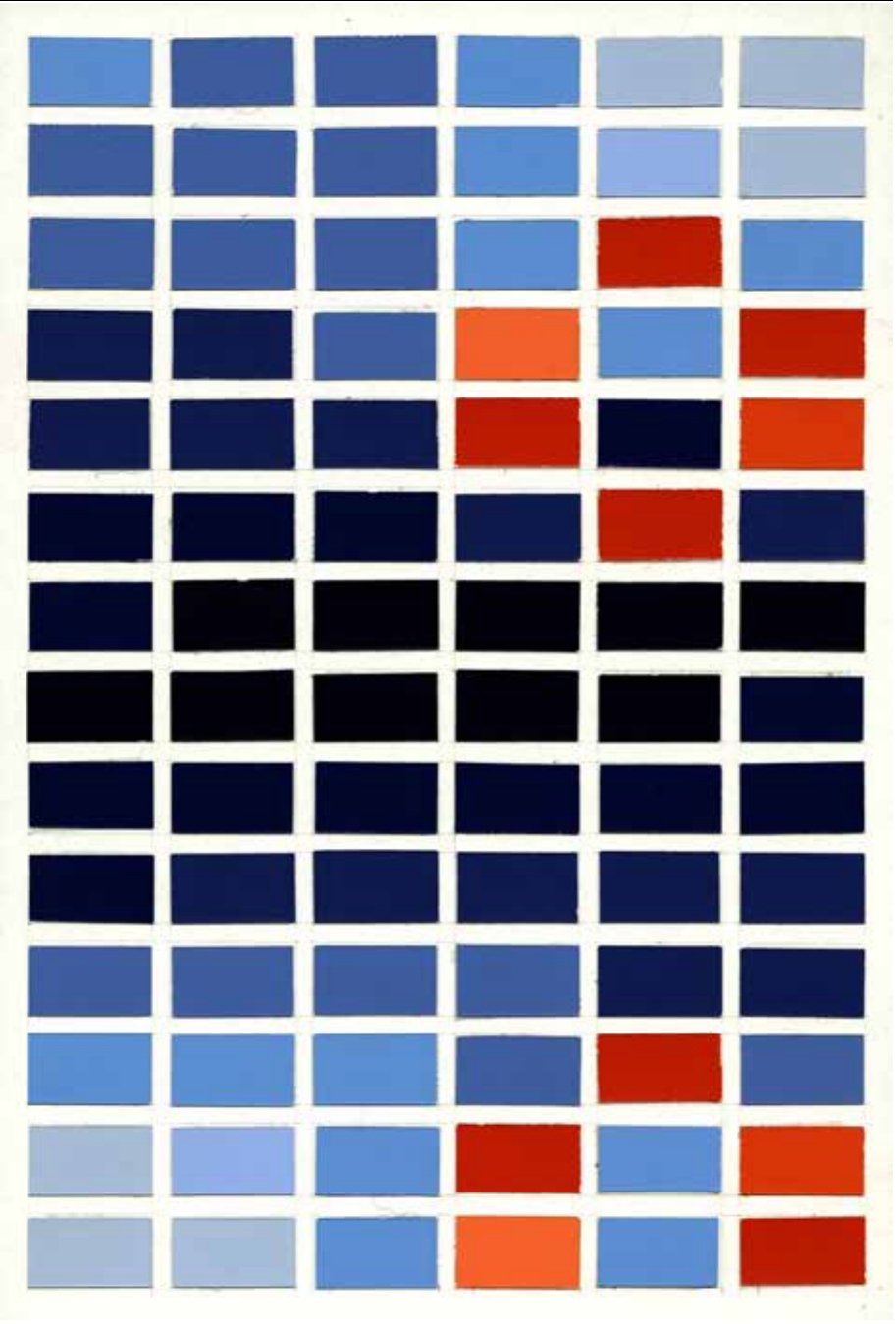
Objective: To create three drawn compositions and one collage composition that explore color relationships.



Professor Jane Ostergaard

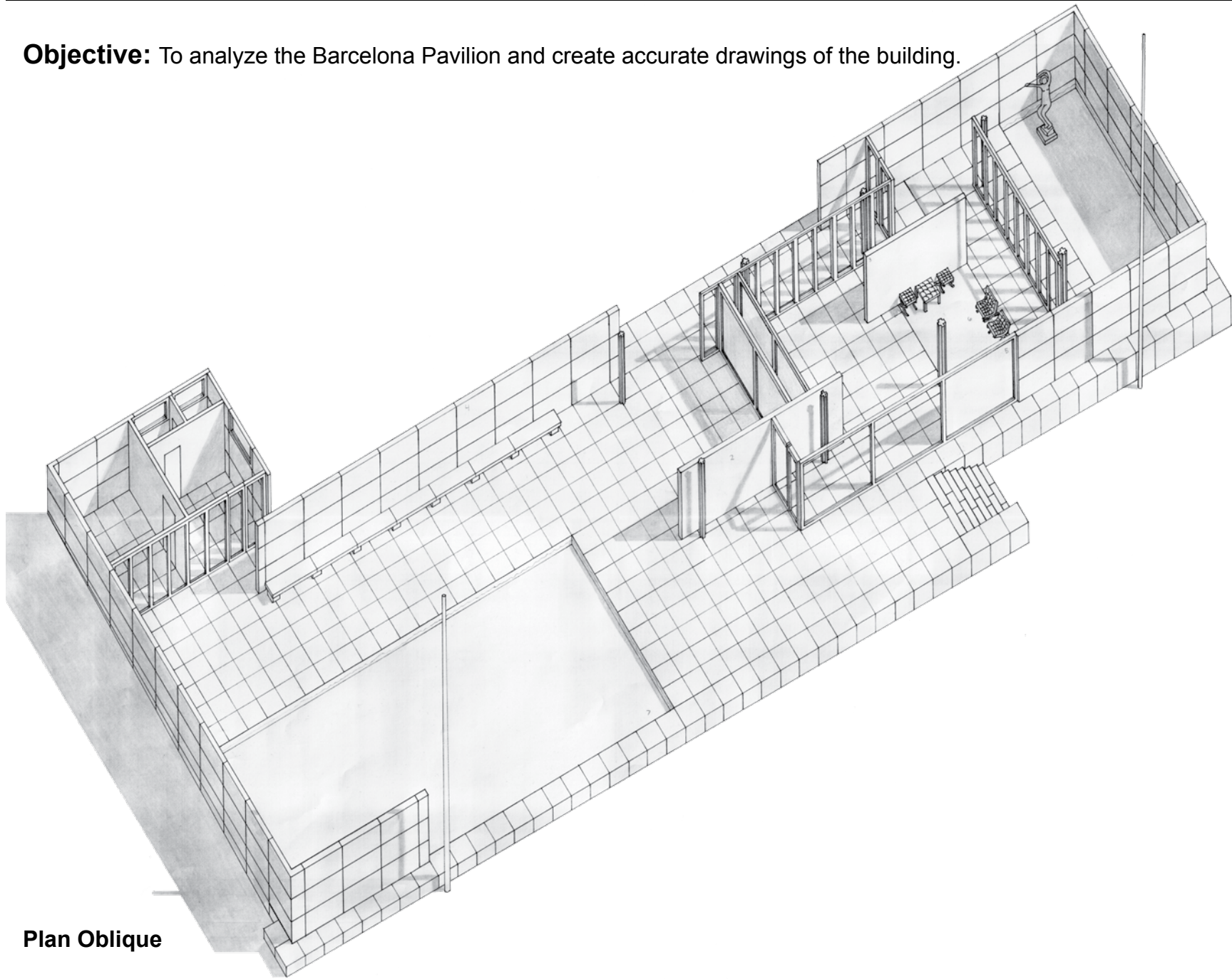
2 Week Project

Arch. 1121 - Architectural Design Communication

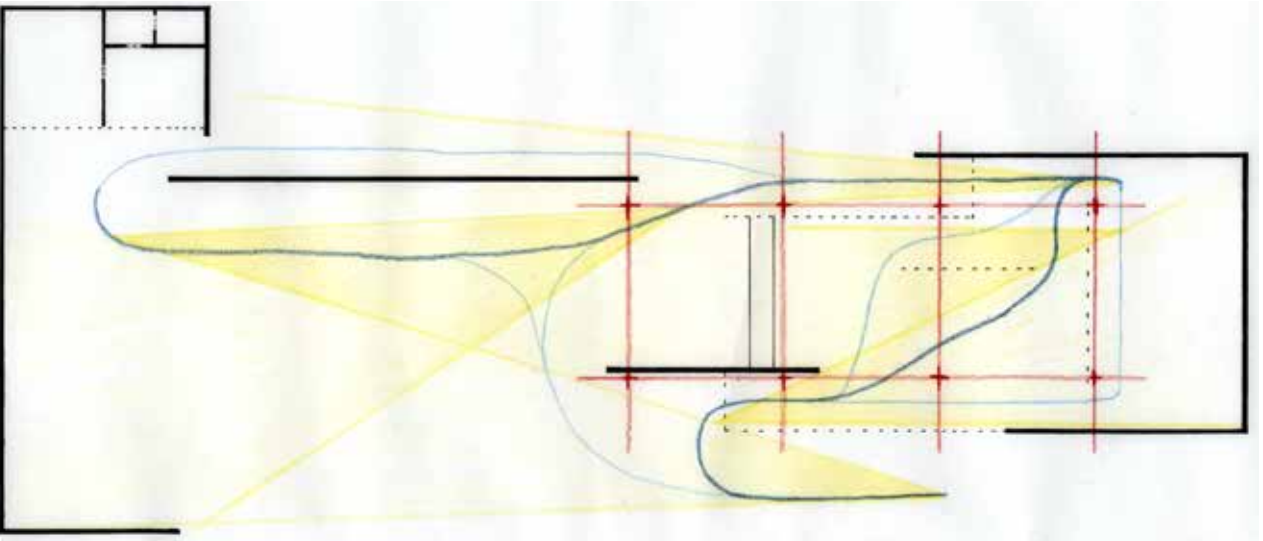
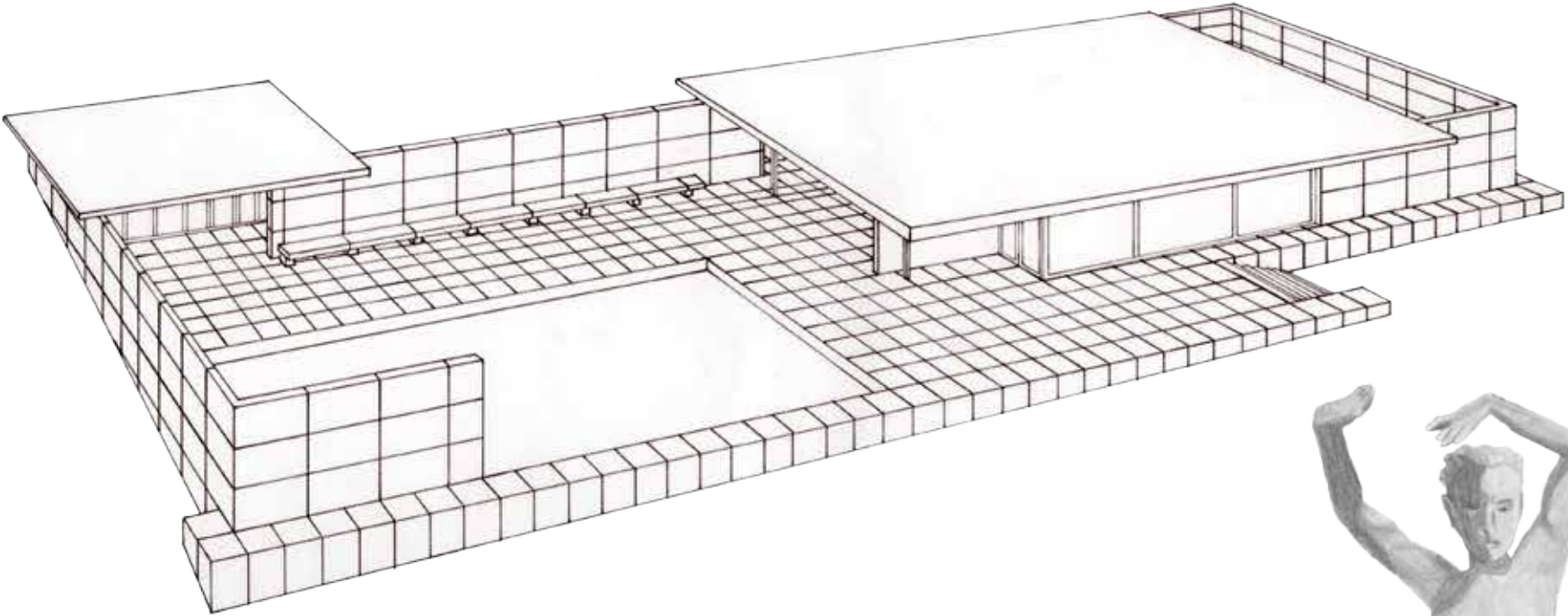


Barcelona Pavilion

Objective: To analyze the Barcelona Pavilion and create accurate drawings of the building.



Plan Oblique



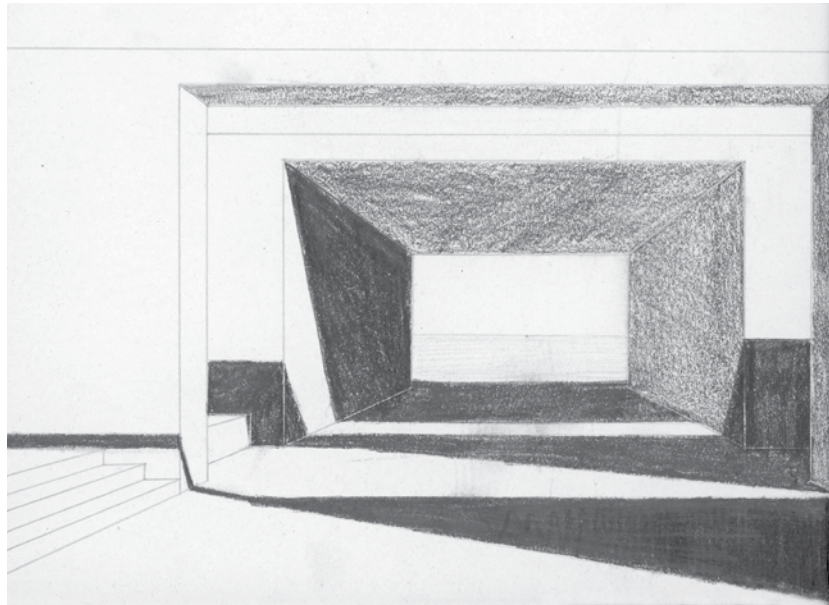
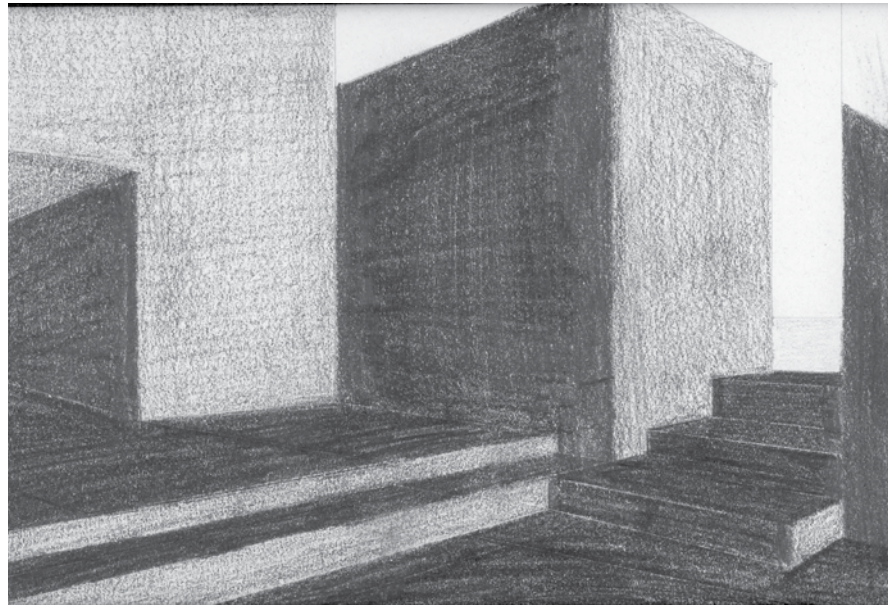
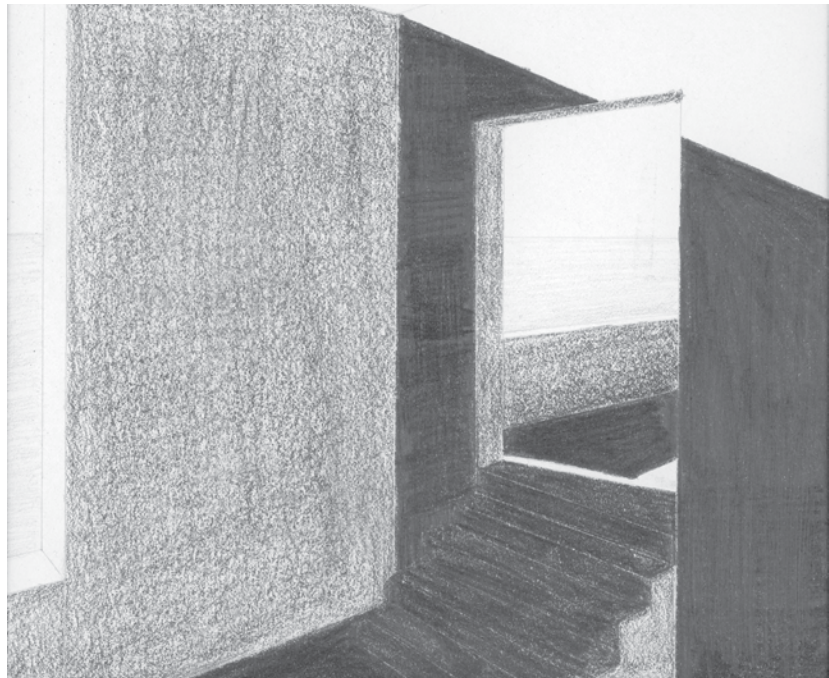
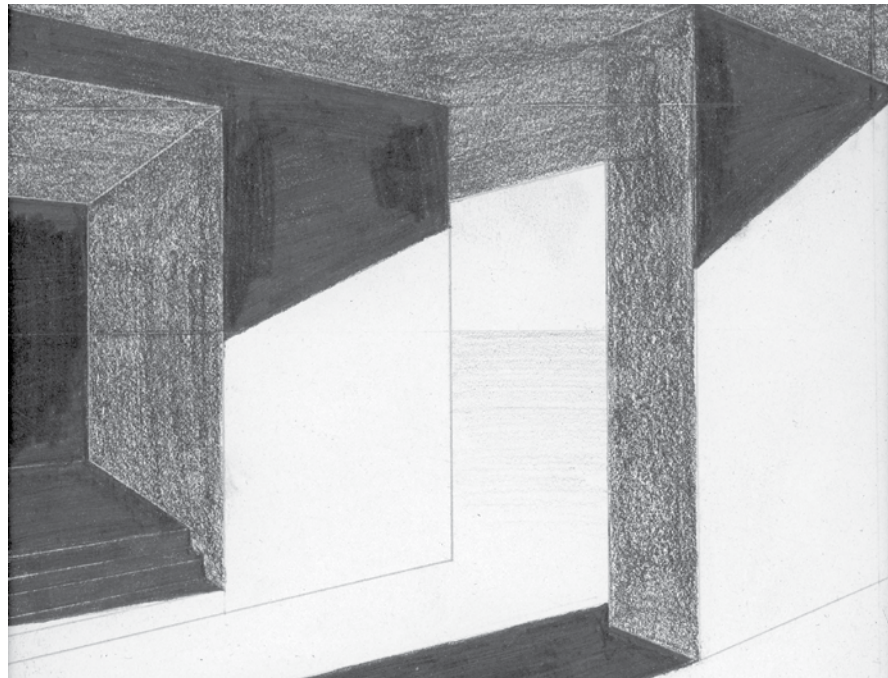
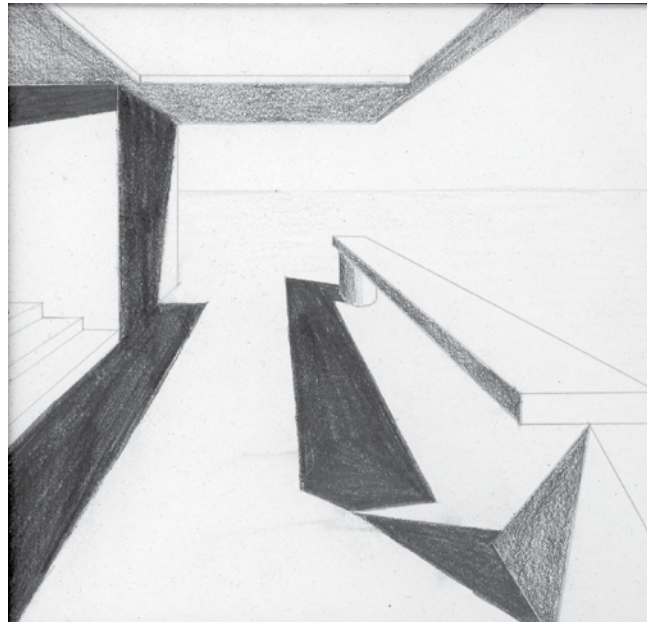
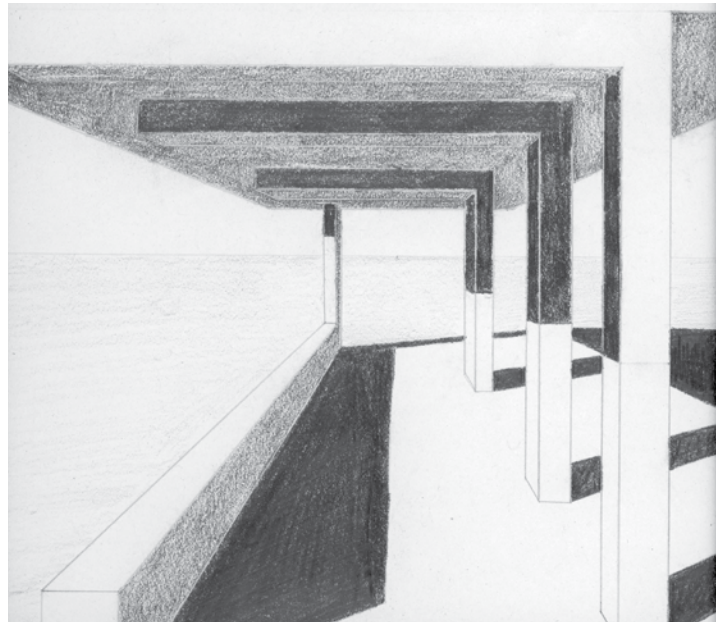
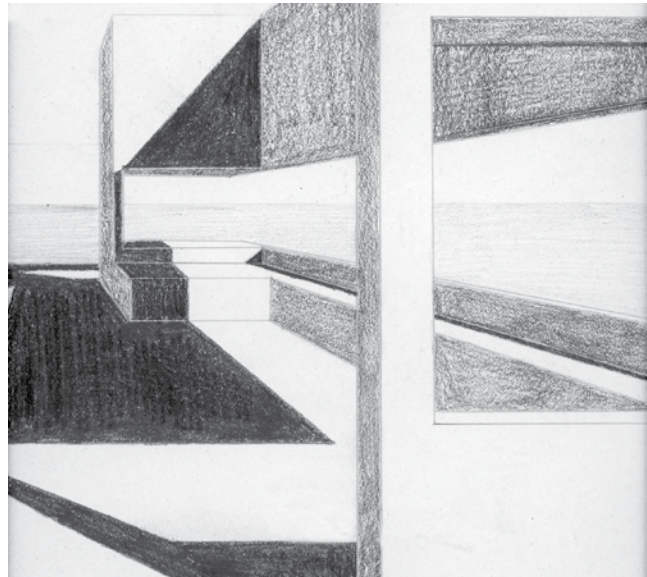
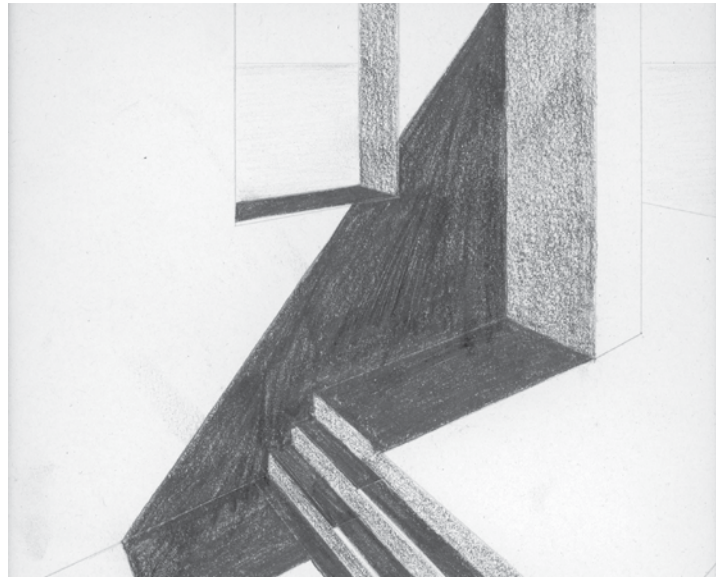
Views, Circulation, and Structure Diagram



Detail Sketch

Perspective Journey

Objective: To draw vignettes of different geometric forms arranged to make spaces to study light and shadow.

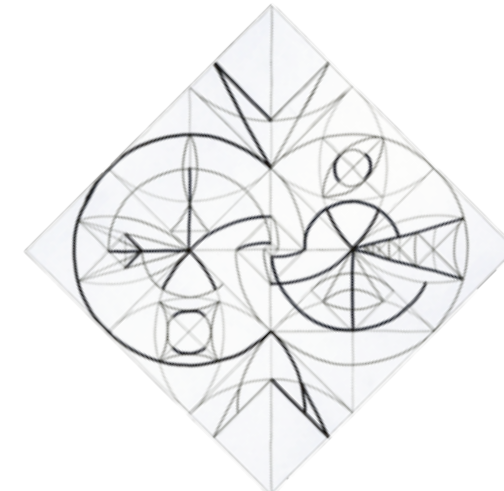
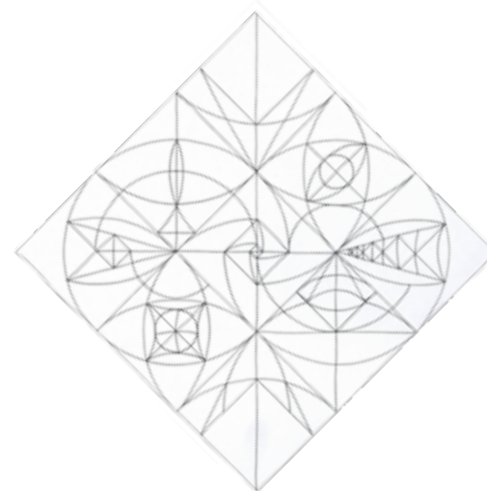
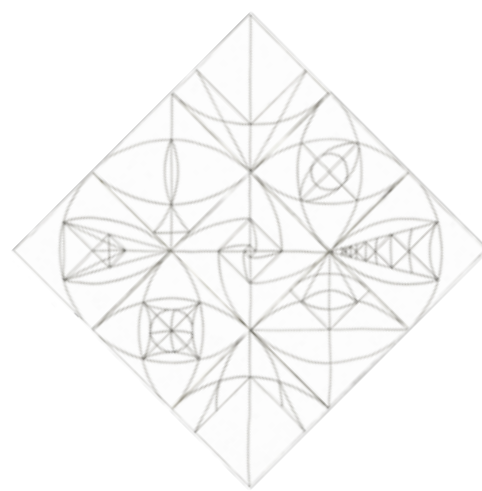


Assemblage, Hierarchy, and Form Project

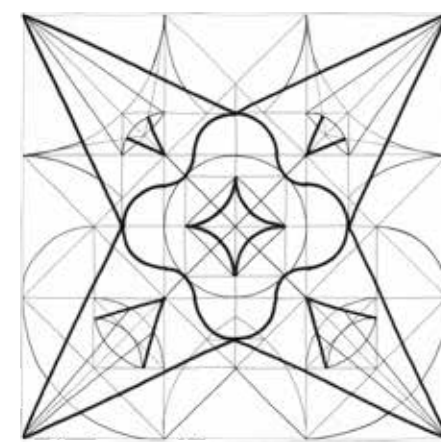
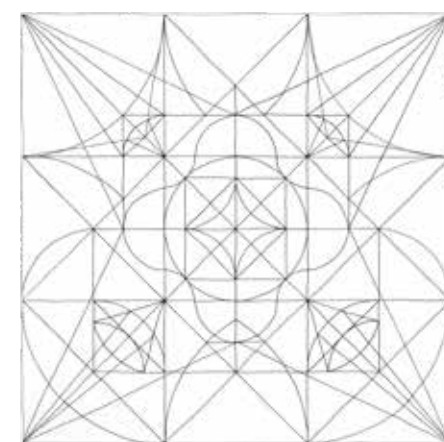
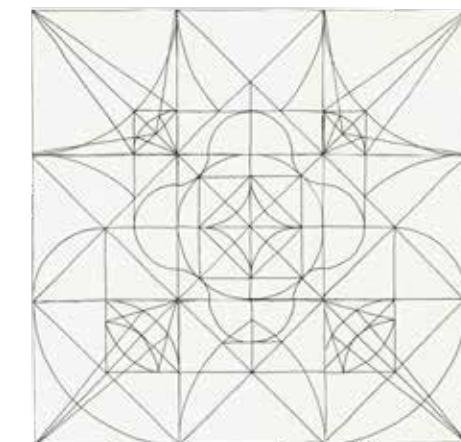
Objective: To create a symmetrical and asymmetrical composition through three phases; then create a three-dimensional form and tone drawing from the composition.

Concept: The first phase is the beginning design using 3" x 3" squares to make a collage. The second phase includes additional lines to add to the composition. The third phase adds line weights to provide depth.

Asymmetrical



Symmetrical



Collage

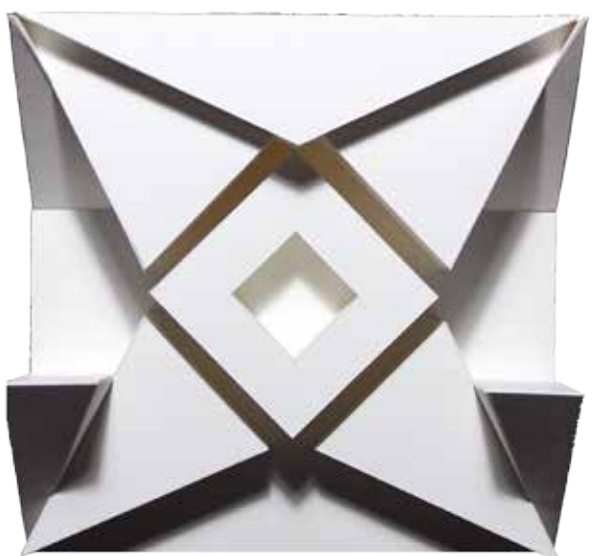
Additional Lines

Line Weights

Professor Jane Ostergaard

4 Week Project

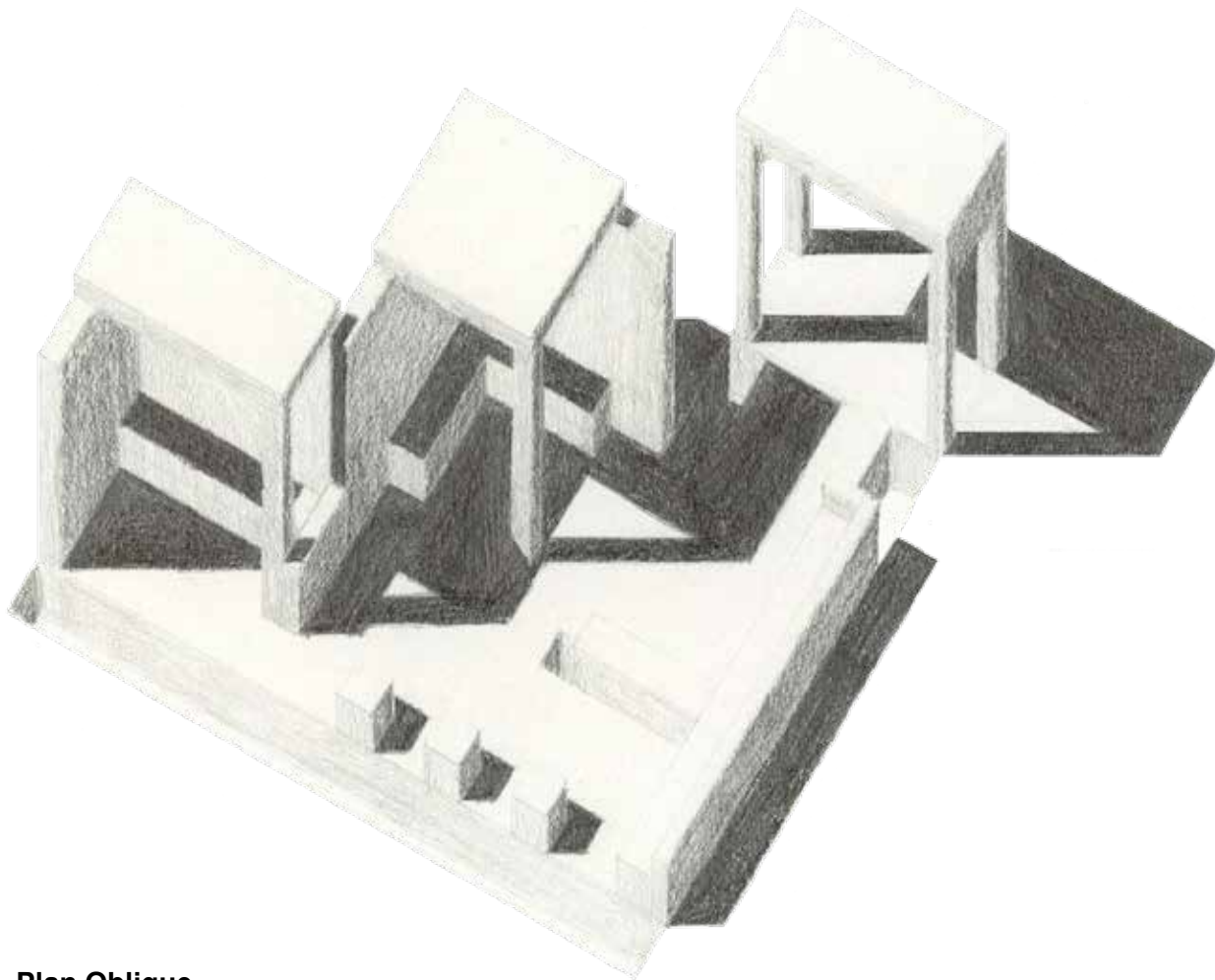
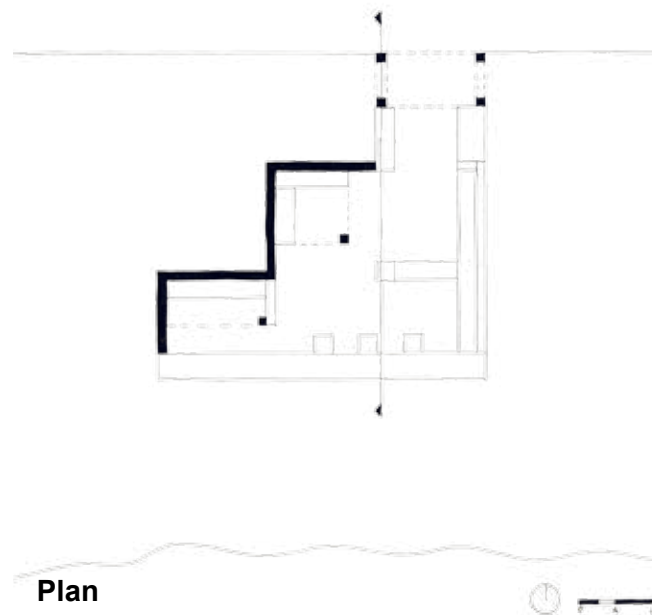
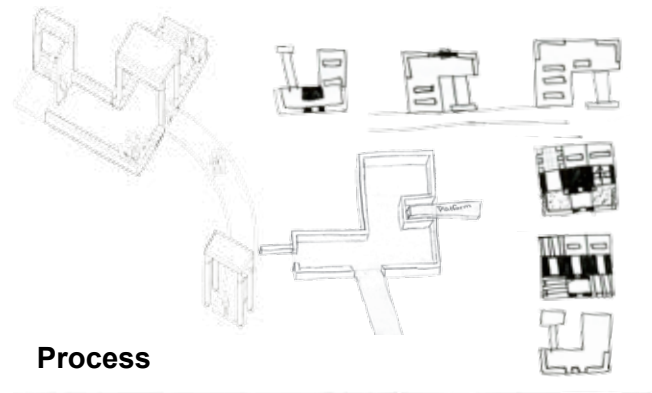
Arch. 1131 - Intro to Architectural Design



Community Gathering Space

Objective: To design a space for students of College of DuPage to be able to interact and gather.

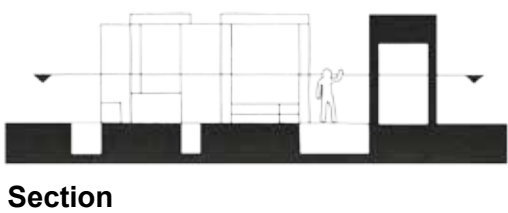
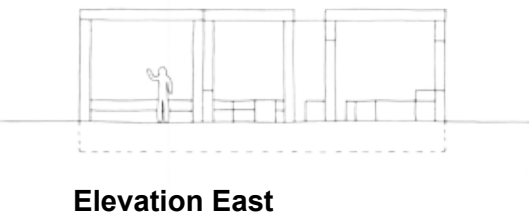
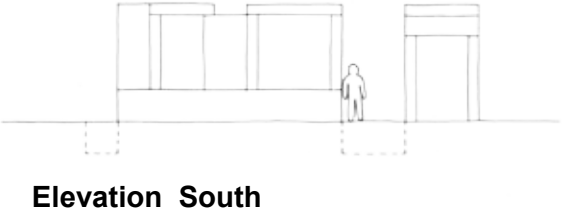
Concept: The design is based on direct south-facing views and different levels of privacy. Certain spaces are either for one person or a group of people, or provide protection from the sun. The entrance allows a quick gateway and short path to the space for students.



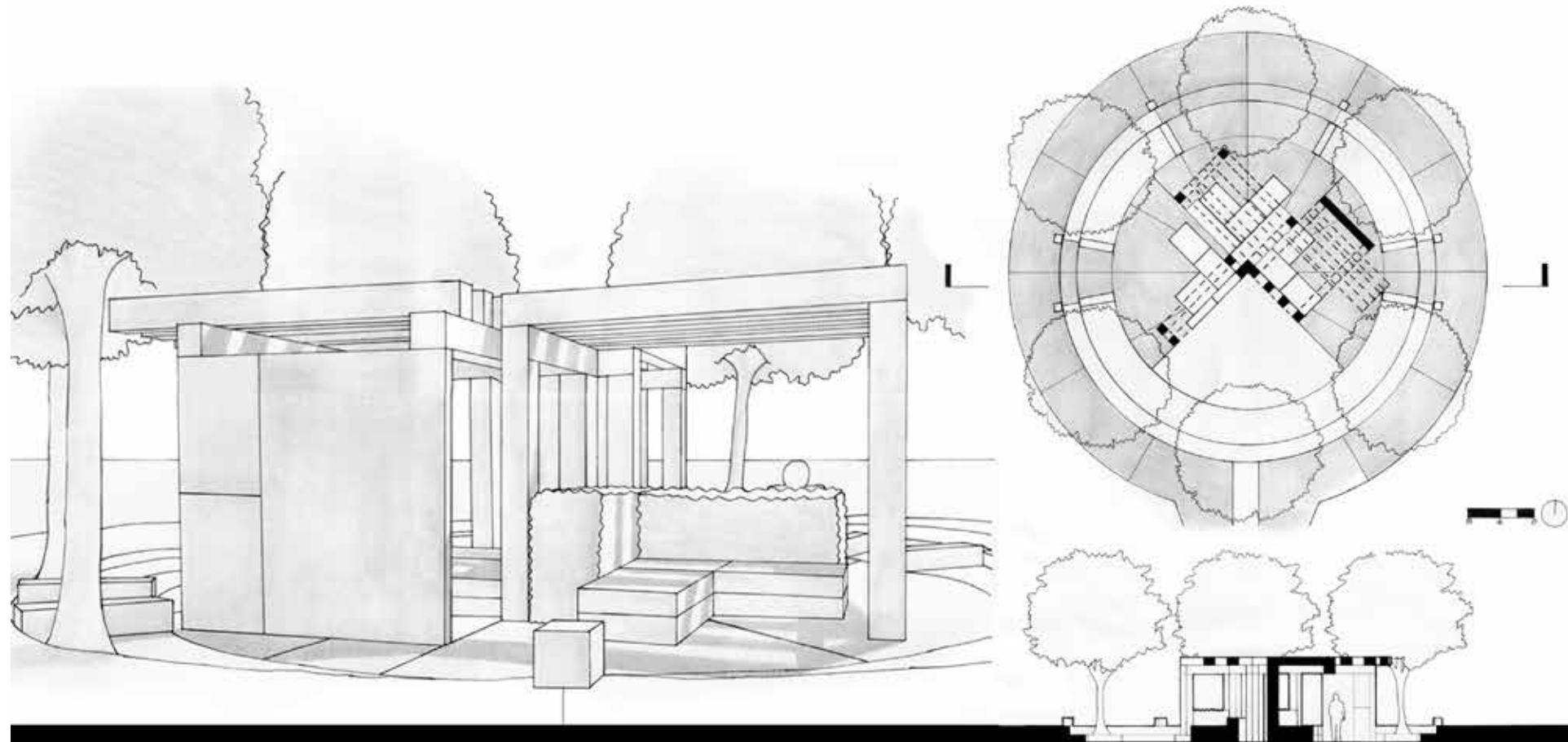
Professor Jane Ostergaard

3 Week Project

Arch. 1131 - Intro to Architectural Design



Spatial Sequence



Objective: To design a unified composition that includes three separate spaces linked together by a continuous path.

Concept: The design explores an axial organization similar to a clock. The trees are placed at equal intervals. Each space is connected at the center and is based on a 45 degree angle. The fall space looks west to watch the sunset; the spring space is directed towards north to provide protection from the sun; and the summer space faces east to view the sunrise.

Professor Jane Ostergaard

3 Week Project

Arch. 1131 - Intro to Architectural Design



Nature of Materials

Objective: To design and build a model that is an abstract expression of the concepts of the Koshino House using wood, metal, glass, and concrete.

Concept: The design is based off of Ensō, or the circle of life. Half of the circle can only be seen looking at the mirrors; the unseen half of the circle is connected to the seen half of the circle through concrete, which represents the strength aspect of the circle of life.



Process



Final



Professor Jane Ostergaard

3 Week Project

Arch. 1131 - Intro to Architectural Design



Chicago Sketches and Photography

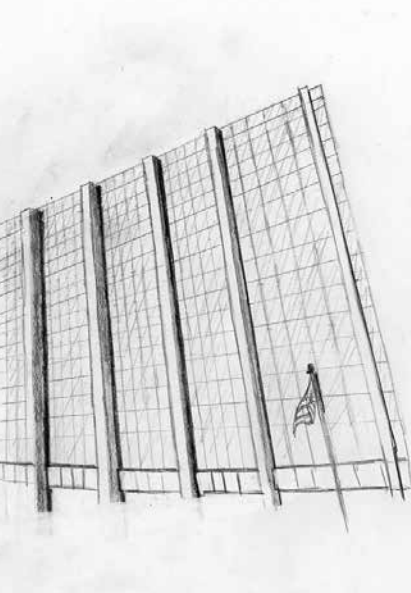
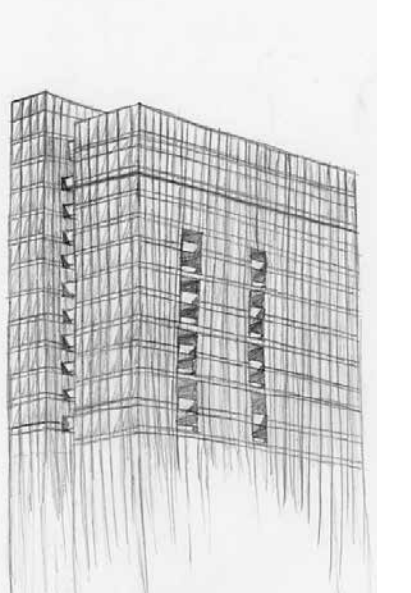
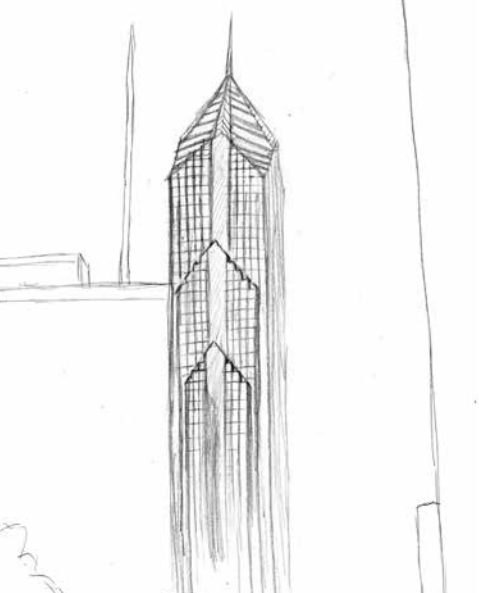
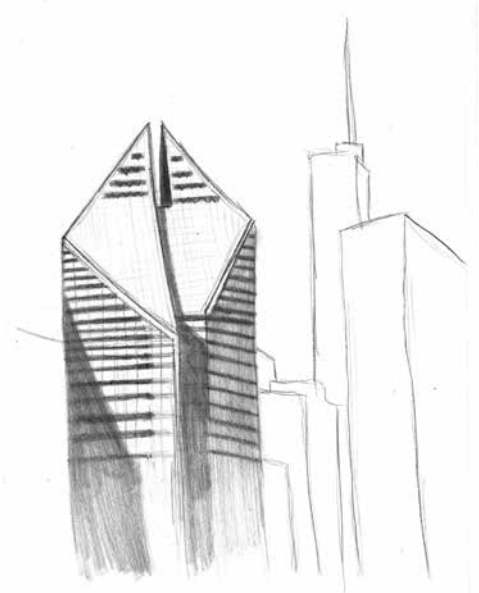
Objective: To sketch and photograph buildings or anything inspirational in Downtown Chicago, IL.



Professor Mark Pearson

1 Week Project

Arch. 2201 - Architectural Design I



Inspirations Collage

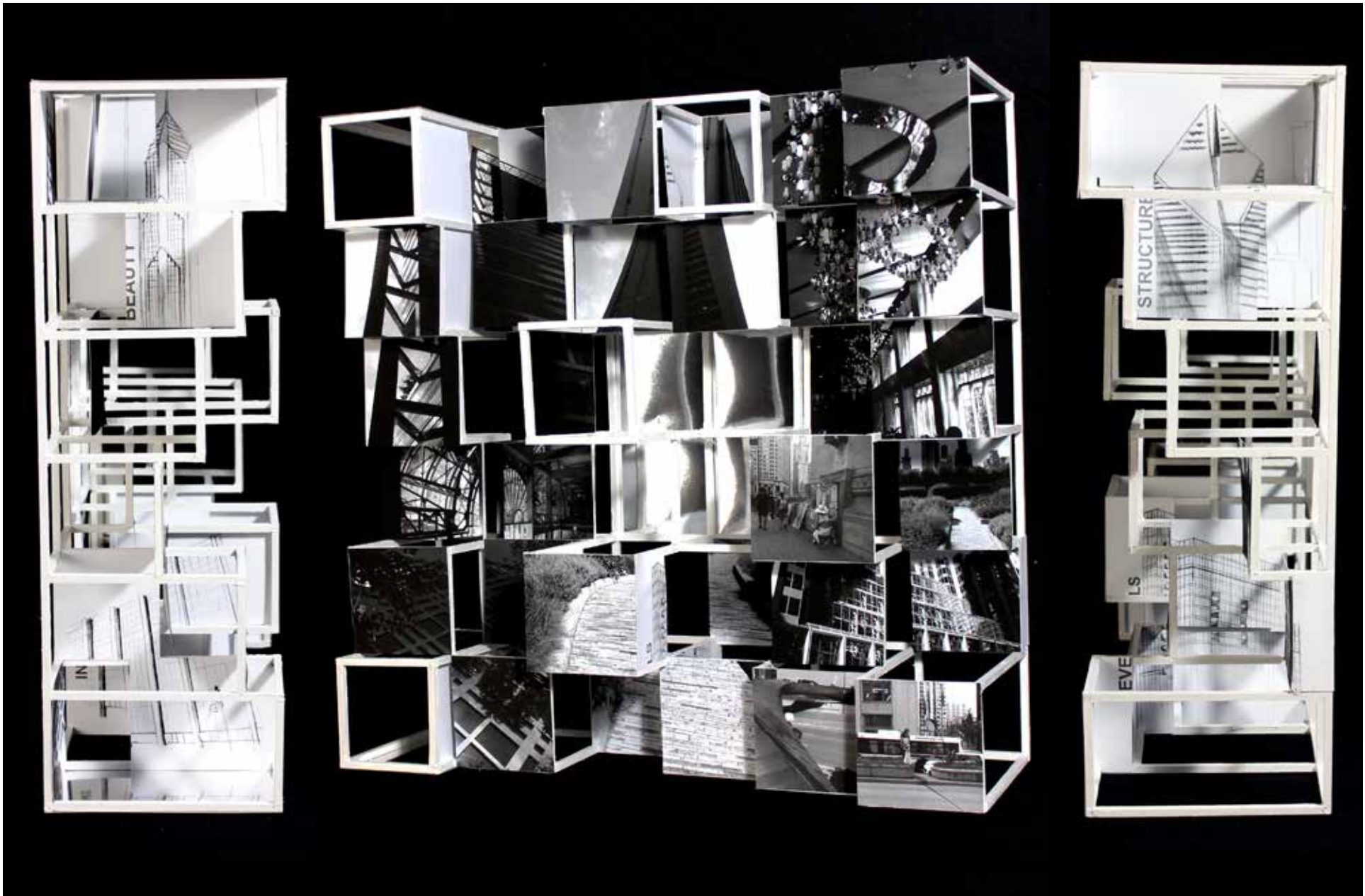
Objective: To create a three-dimensional collage of images, text, and sketches based on inspiration from Chicago.

Concept: The design is based off of the **structure** of the city and how all the buildings are based on a grid. The grid was the main focus of the design, with addition of **levels** to make the collage three-dimensional. In the center and other sections of the collage is a reflective material to represent the **reflection** of the windows of the buildings in the city; the reflection gave a different perspective of the buildings around. The pictures included in the collage show the **inner beauty** of the city. A few of the images involved nature, people's passions, and showcases of love.



Process

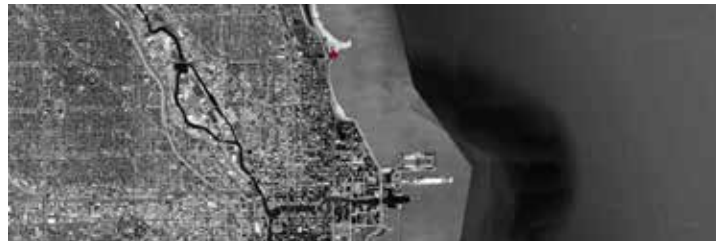
Final



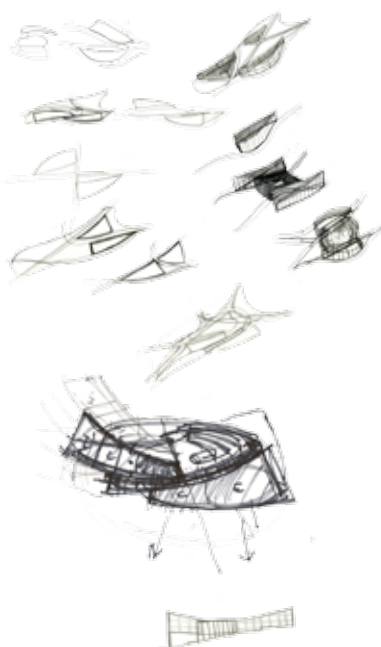
Lake Michigan Ecology Center

Objective: To create an ecology center that will house an exhibit and educational programming on sustainability, environmental stewardship, and water ecology within the Great Lakes region.

Concept: Uninterrupted migration of people through the space, similar to the migration of birds. The building provides a sweeping panorama view.



Site Context and Photos

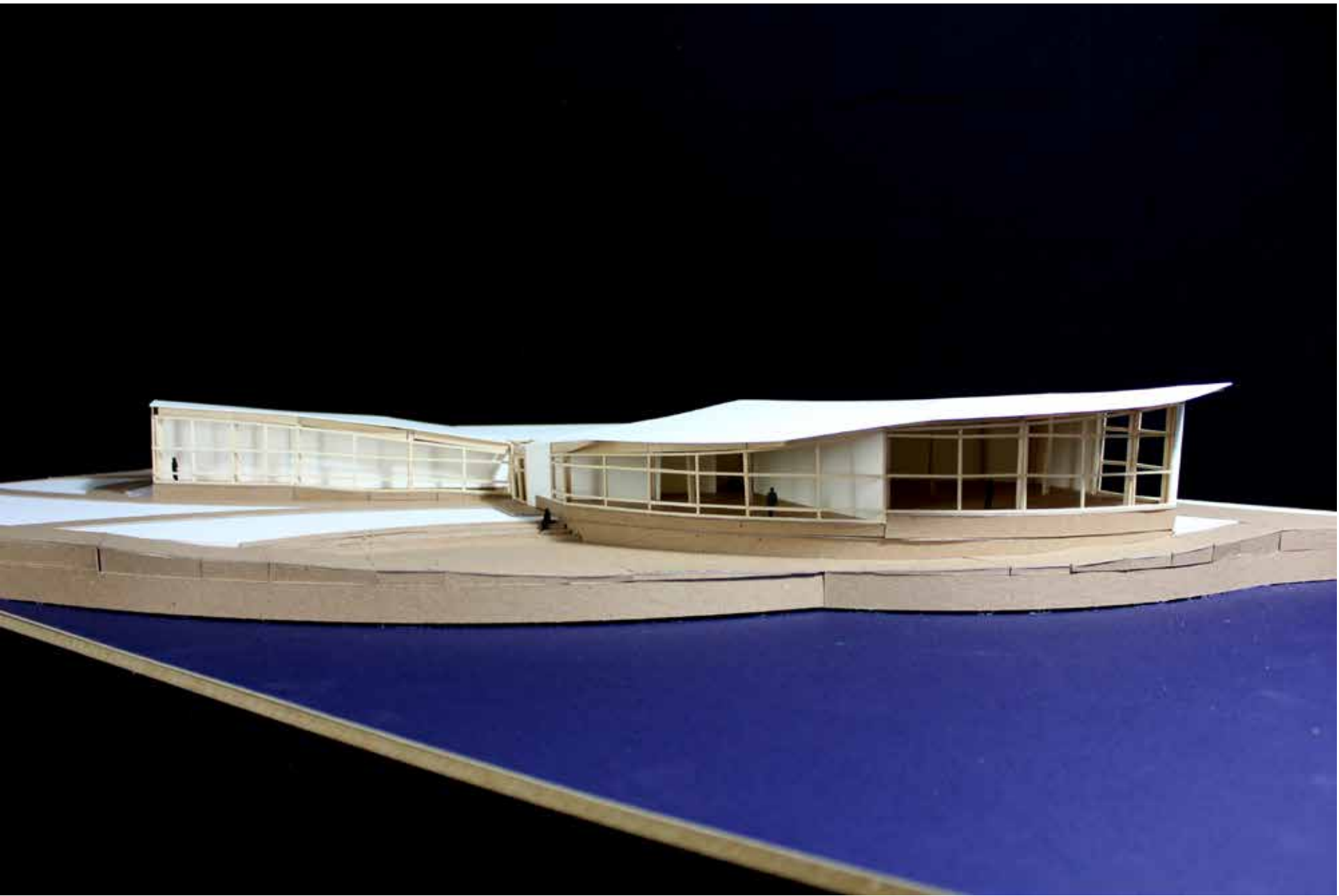


Process

Professor Mark Pearson

10 Week Project

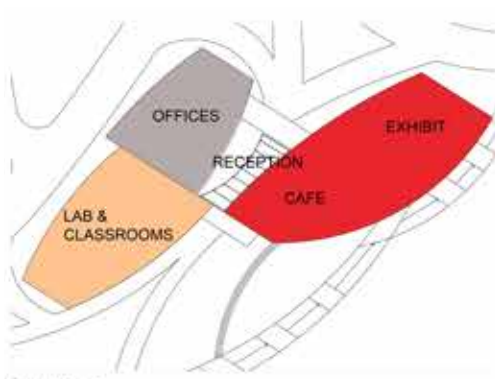
Arch. 2201 - Architectural Design I



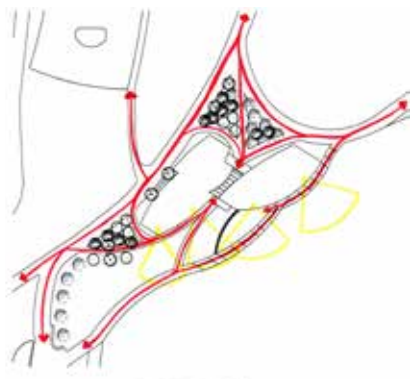
Lake Michigan Ecology Center



Site Plan



Parti



Concept



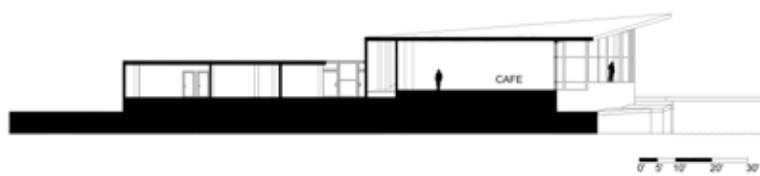
1:30 Model



Site Circulation



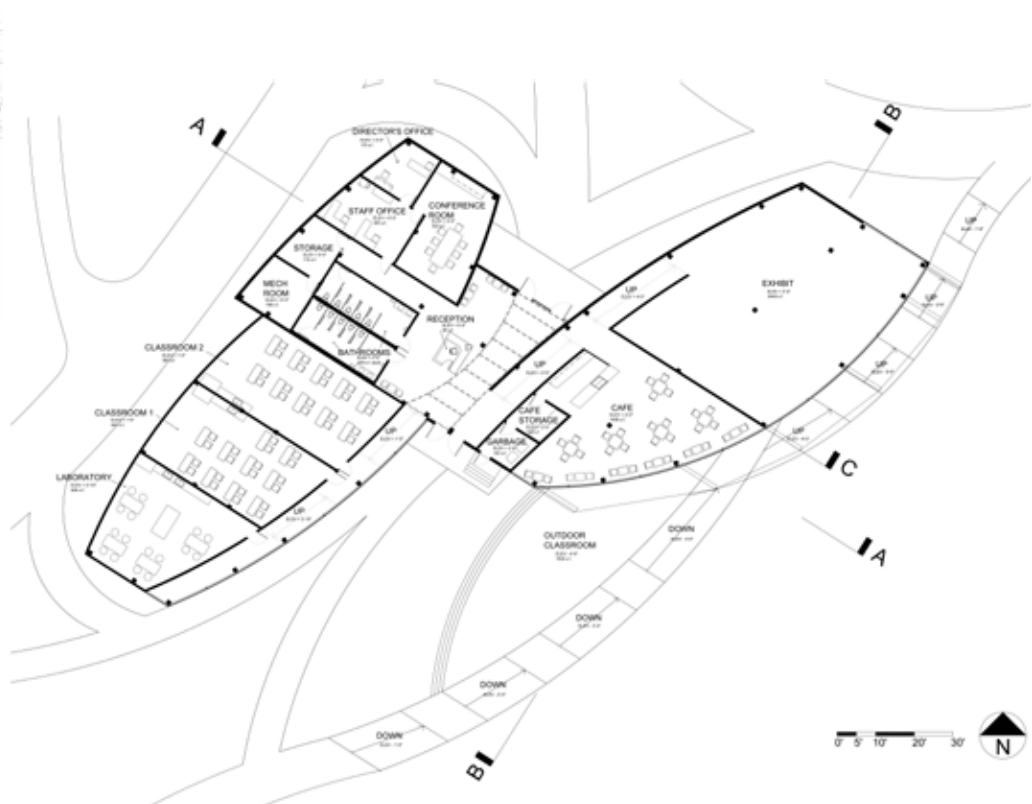
Inner Circulation



Section A



Section B



Floor Plan

Professor Mark Pearson

10 Week Project

Arch. 2201 - Architectural Design I

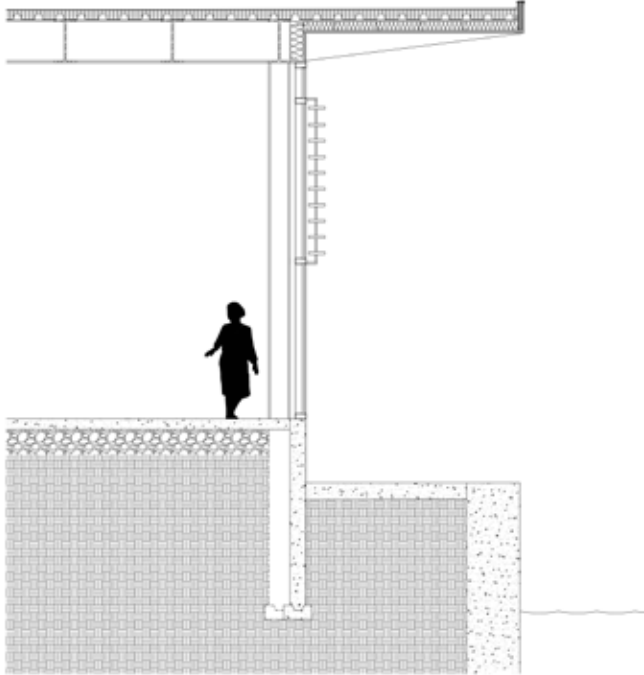


Lake Michigan Ecology Center

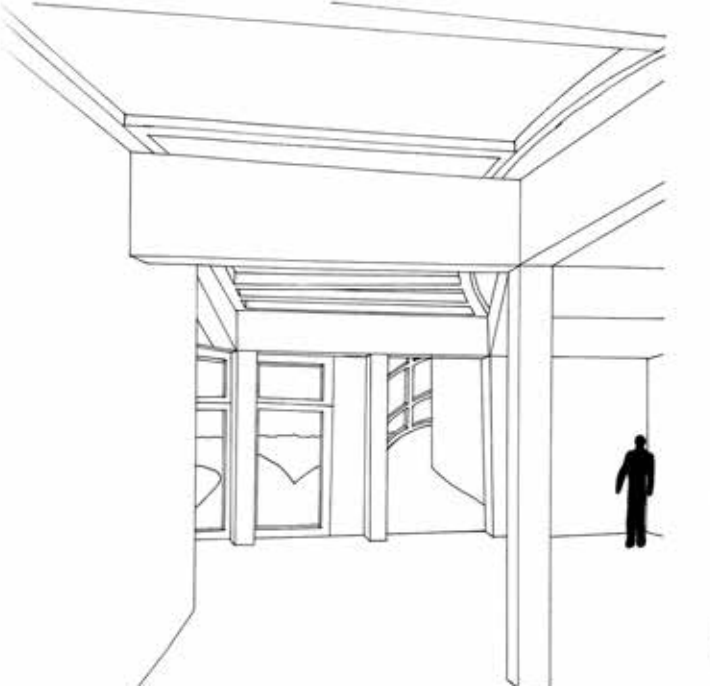
Professor Mark Pearson

10 Week Project

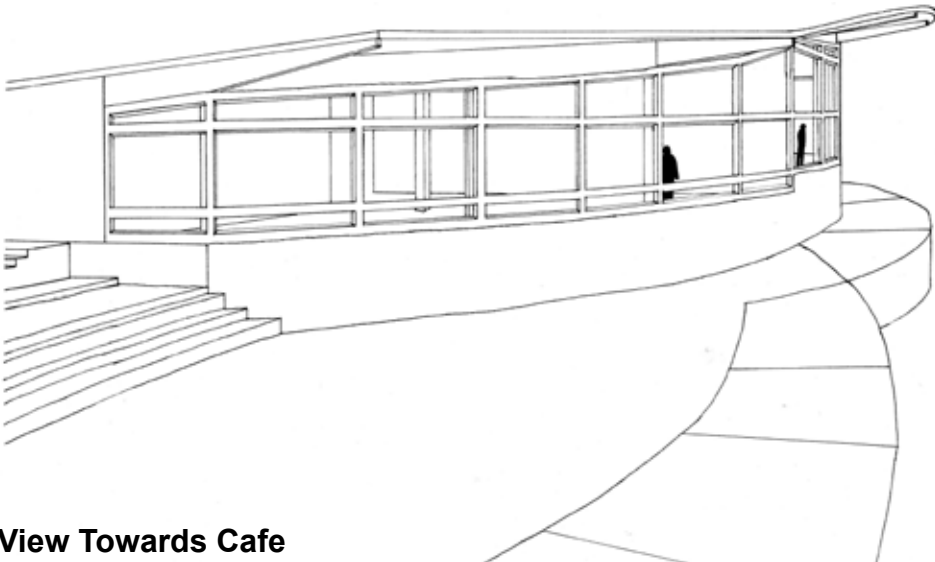
Arch. 2201 - Architectural Design I



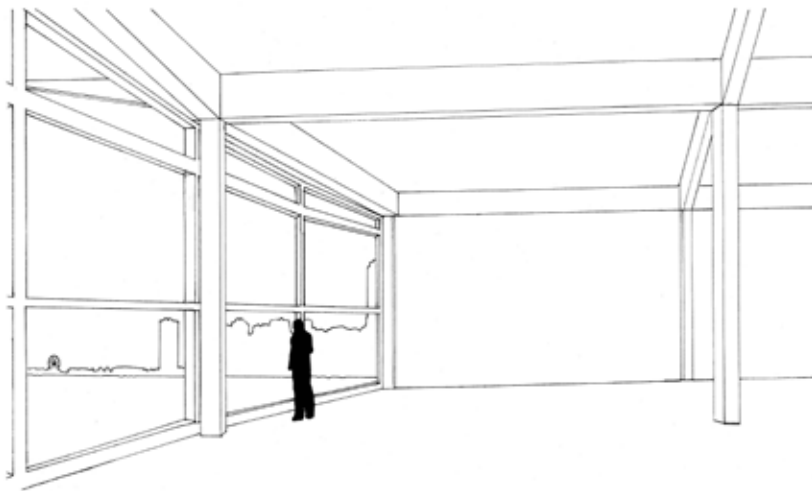
Detail Section C



View towards South



View Towards Cafe



View From Exhibit

