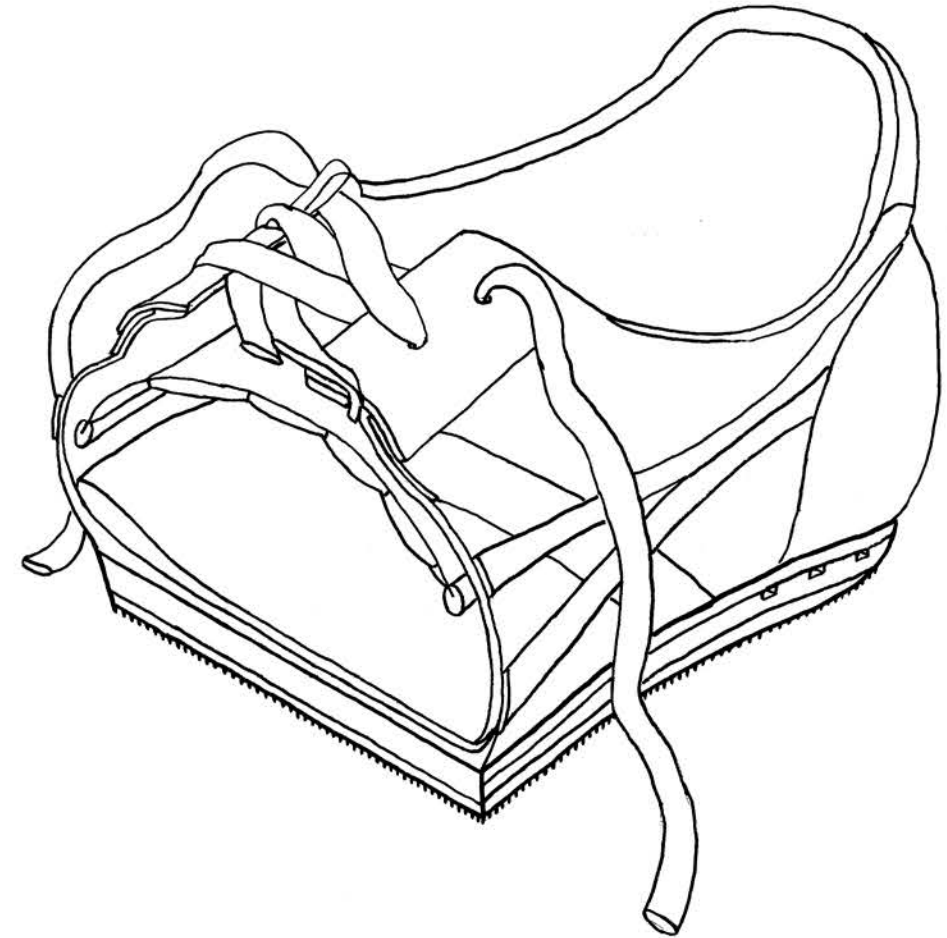
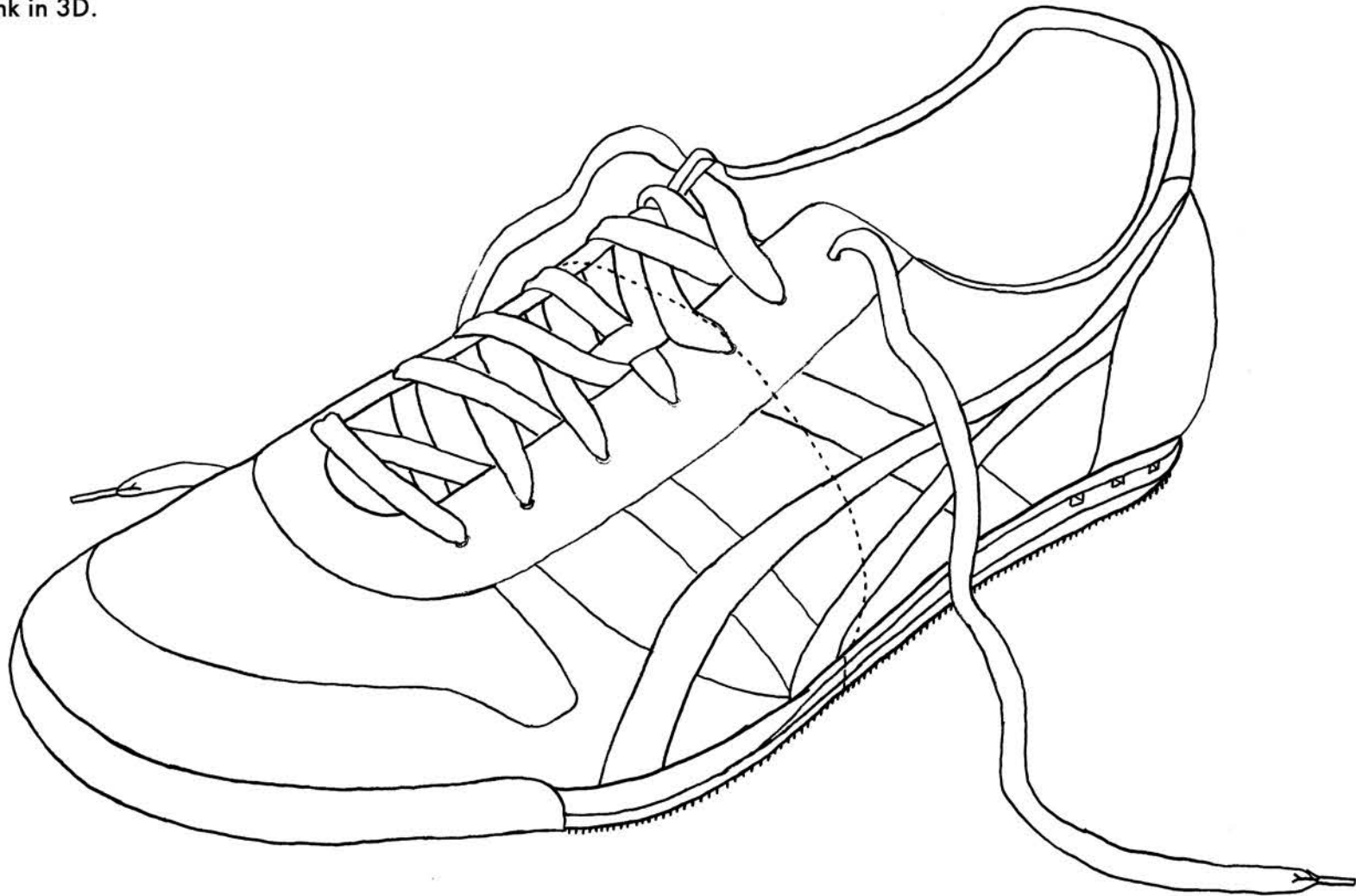


SHOE CONTOUR DRAWING

ARCH 1121 - ONE WEEK

OBJECTIVE

Draw a shoe and its section using contour lines to develop hand-rendering skills and to think in 3D.



SANTA MARIA DEL FIORE

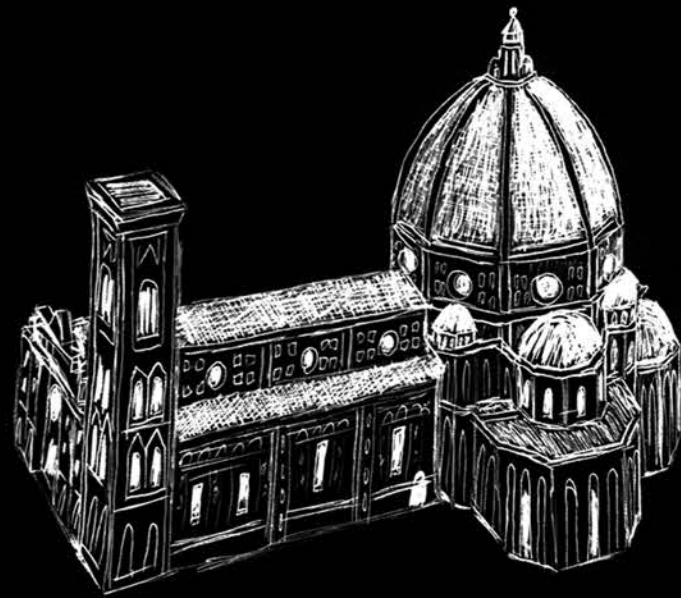
ARCH 1100 - ONE WEEK

OBJECTIVE

Choose a historically meaningful building and create a 1/8 scale model.

SOLUTION

I created a diagrammatic representation to show the layers of octagons and rectangles that when viewed from above resembled a cross - just like the actual building.



TOP VIEW



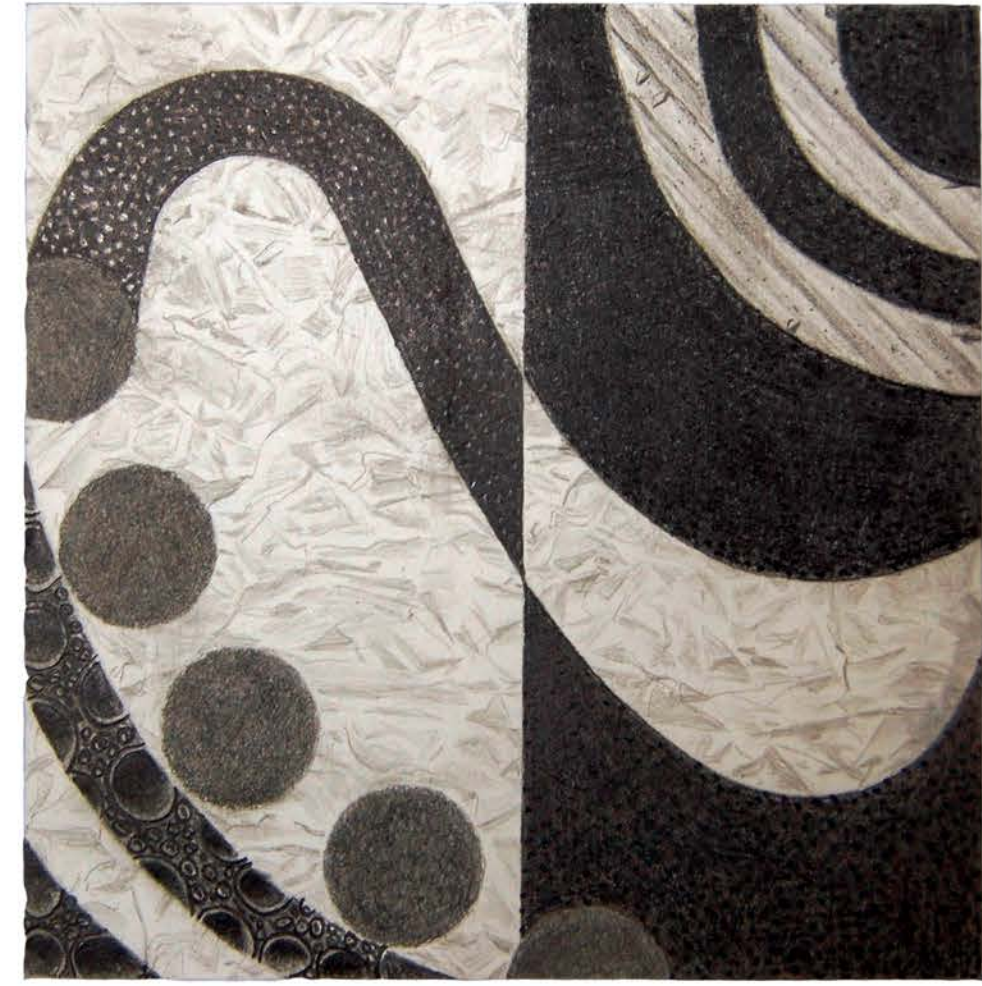
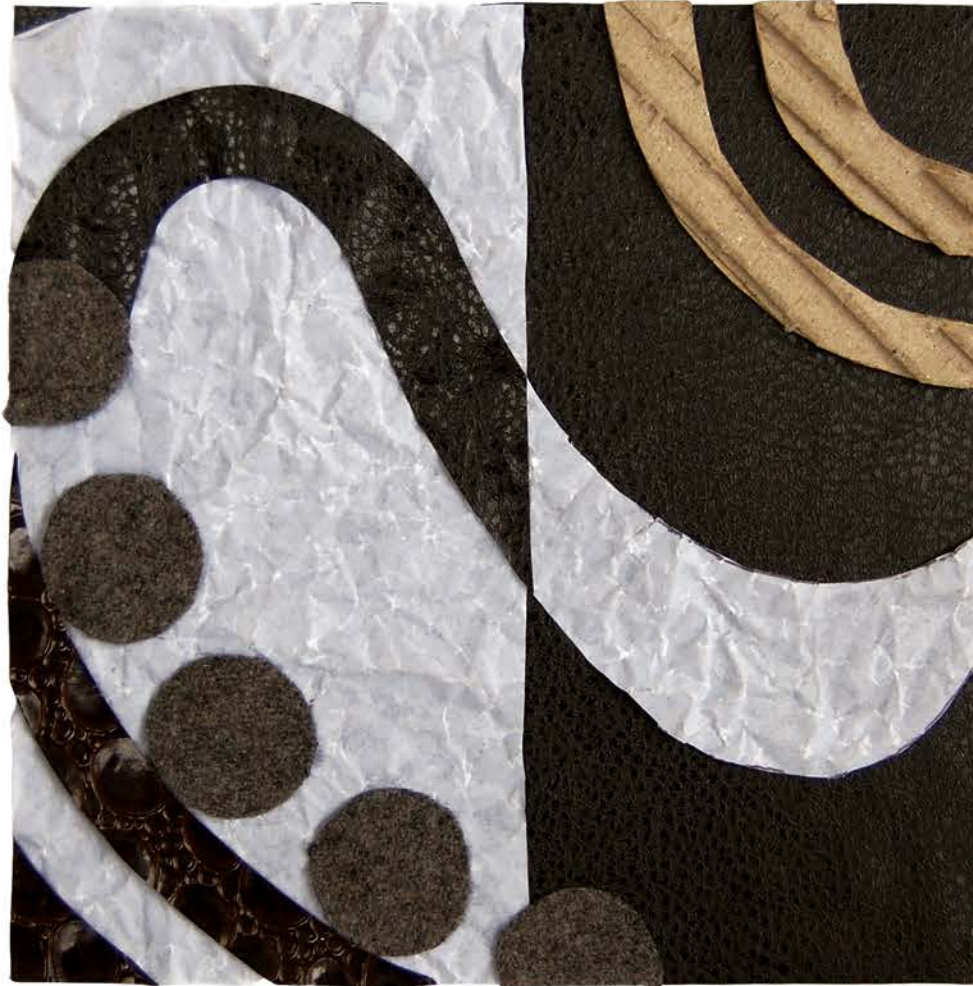
1/8 SCALE MODEL

TEXTURE DRAWING

ARCH 1121 - ONE WEEK

OBJECTIVE

Organize a composition of materials with a unifying theme and hand render the collage to create an accurate representation of texture.



GRAPHITE ON PAPER

NATURE OF MATERIALS

ARCH 1131 - TWO WEEKS

OBJECTIVE

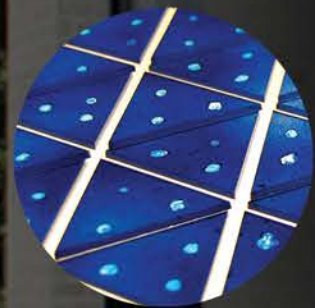
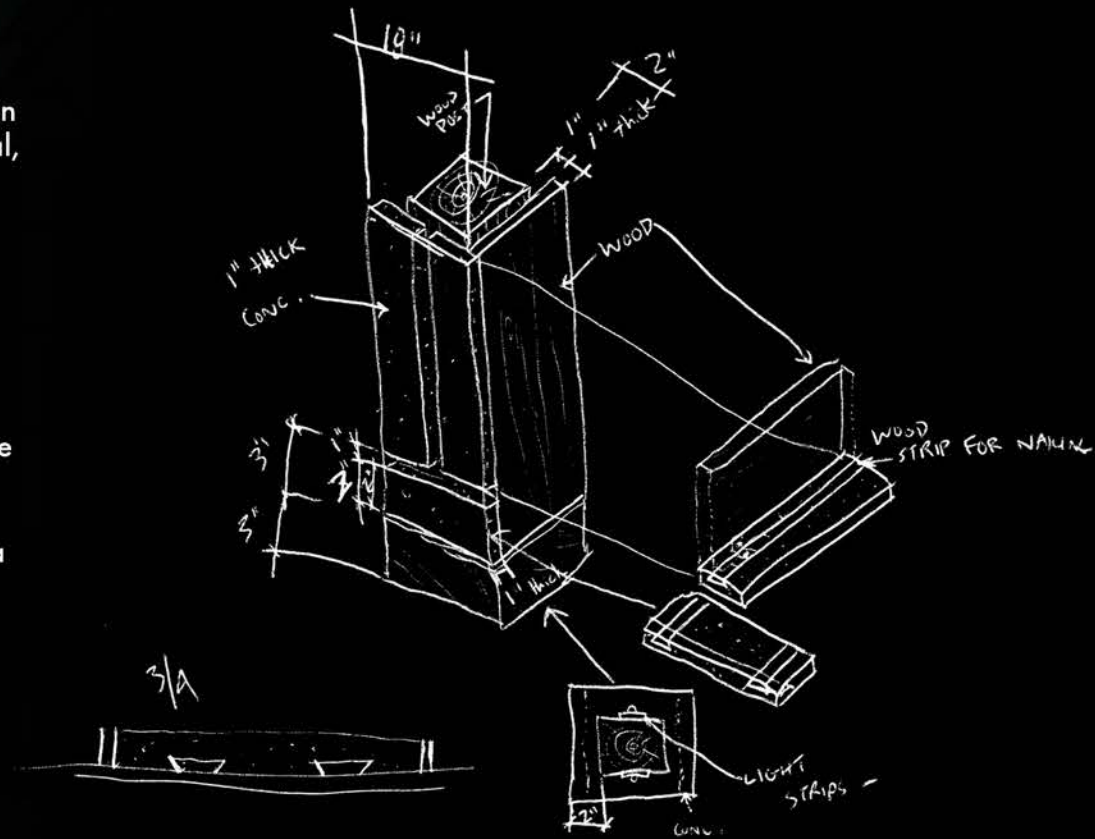
Create a model conveying the ideas of an existing building using glass, wood, metal, and concrete.

BUILDING

Casa Rotunda
by Mario Botta

SOLUTION

Wood was added behind a concrete face with lighting to add warmth and create contrast. The model is symbolically connected to the earth and sky through a void in the concrete, linking the stained glass to the grassy base.



GLASS



WOOD



METAL



CONCRETE



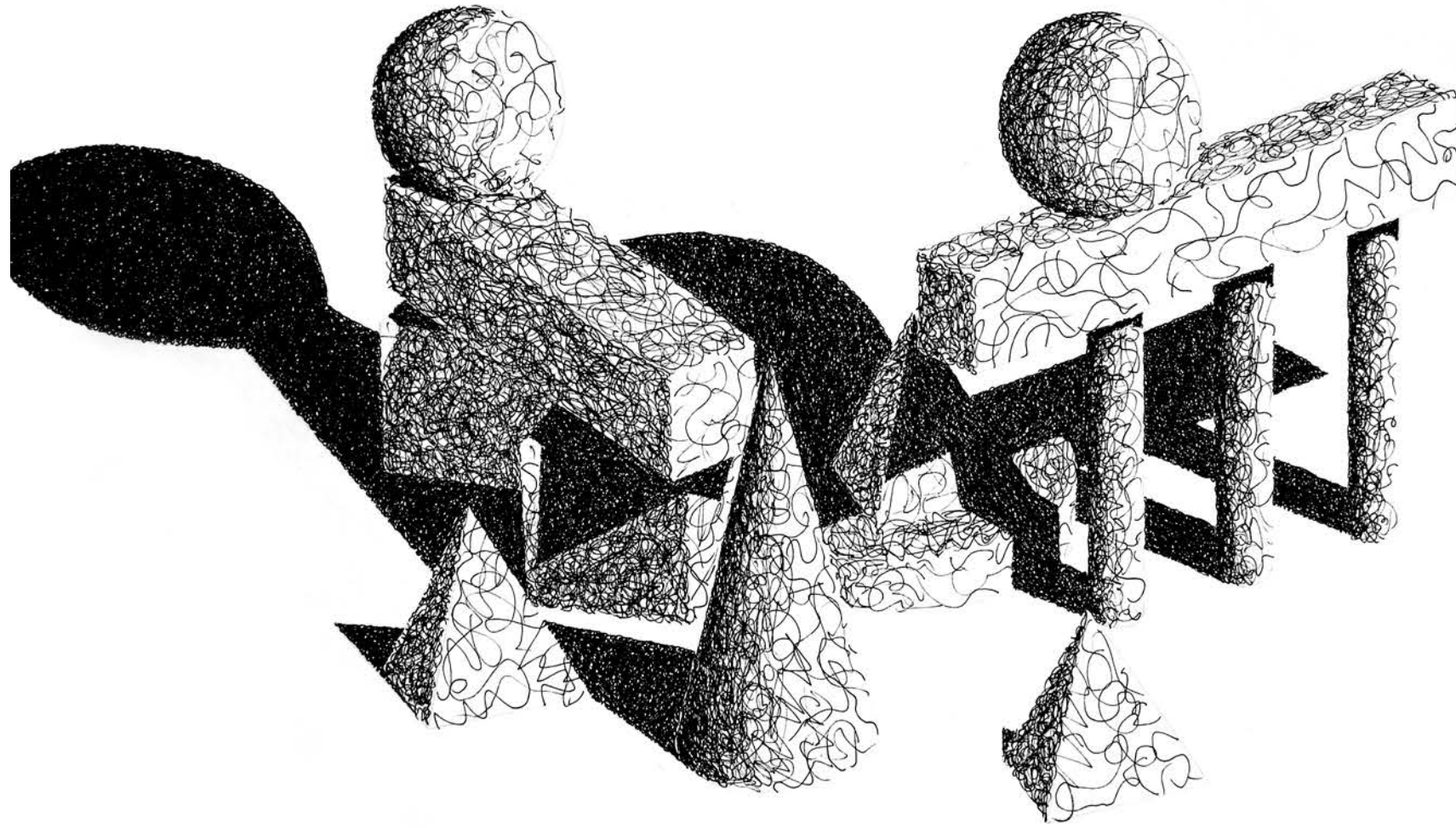
4 FT. TALL MODEL

STILL LIFE DRAWINGS

ARCH 1121 - TWO WEEKS

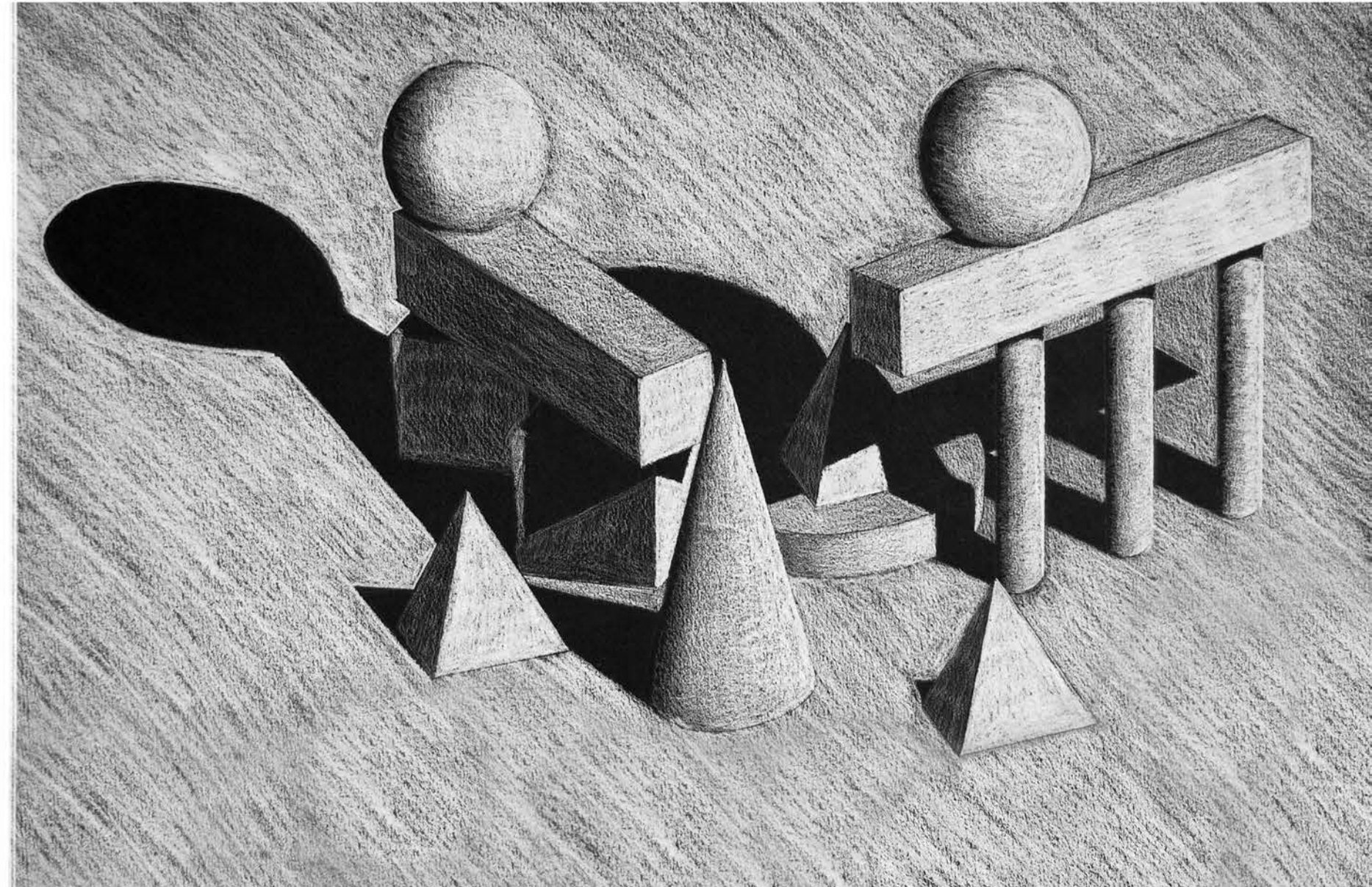
OBJECTIVE

Make 3D shapes out of paper then arrange and draw isometrically.



INK

WHITE COLOR PENCIL ON BLACK PAPER



SPATIAL SEQUENCE

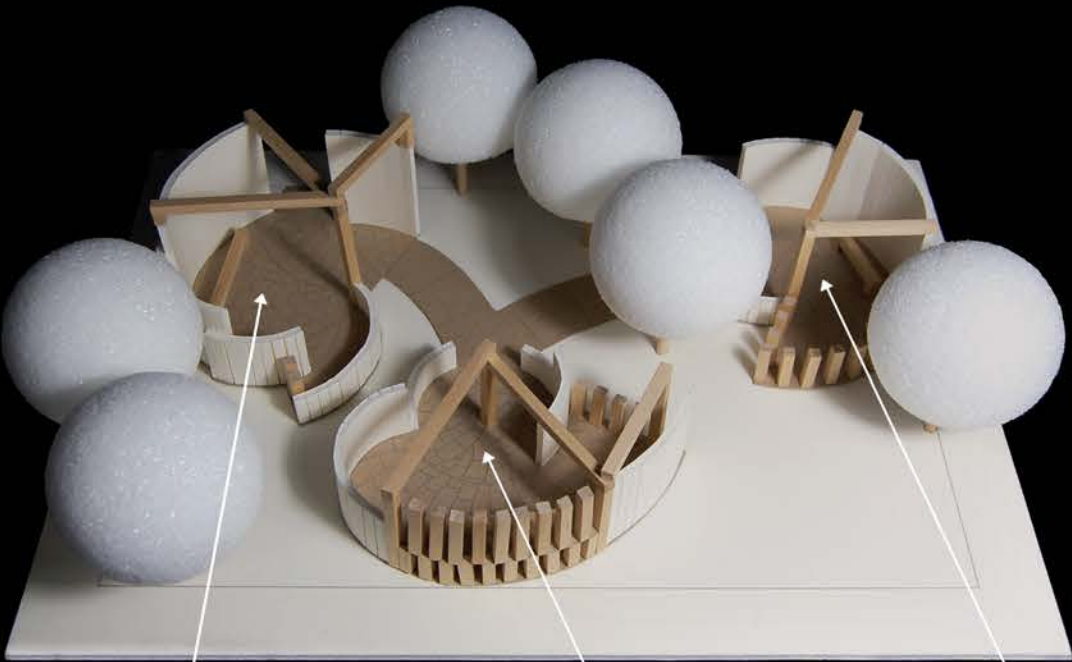
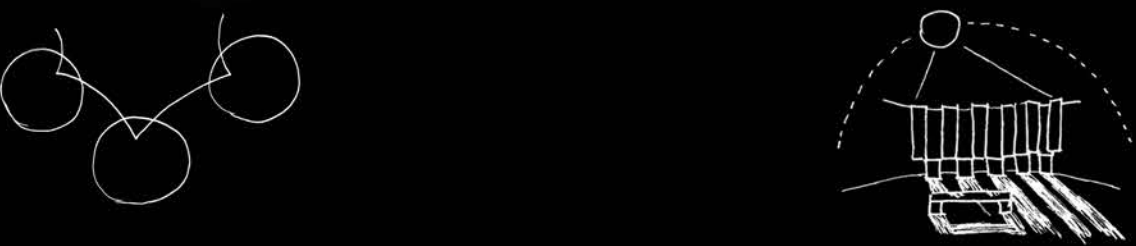
ARCH 1131 - TWO WEEKS

OBJECTIVE

With a restricted kit of model pieces create an outdoor space composed of three spaces for Spring Summer and Fall

SOLUTION

Depending on the temperature of the season and direction of sunlight I determined how much shade was needed for each space



SPRING



SUMMER



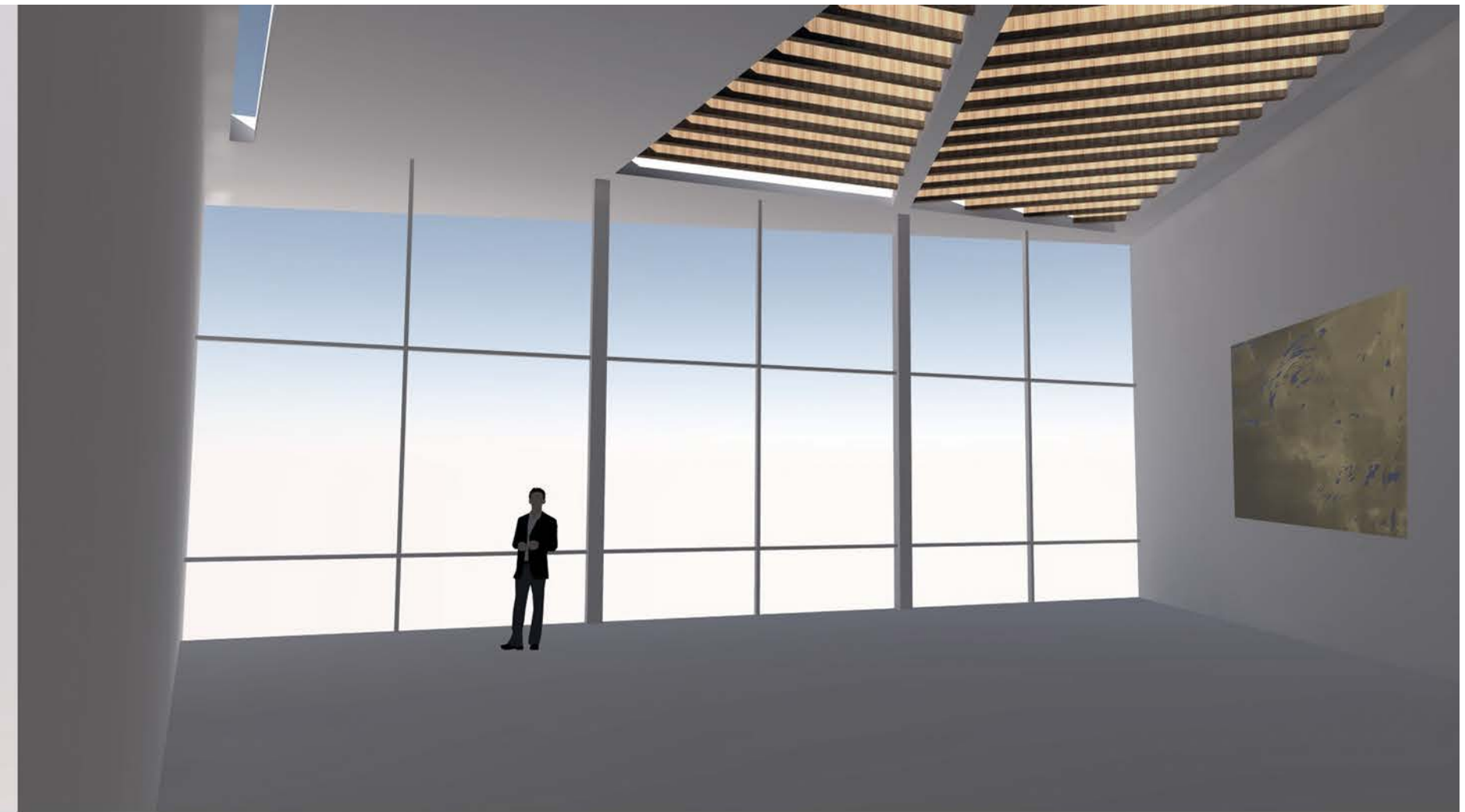
FALL



1/8 SCALE MODEL

NORTHERLY ISLAND EDUCATION CENTER

ARCH 2201- TEN WEEKS



"In wisdom gathered over time, I have found that every experience is a form of exploration."

-Ansel Adams



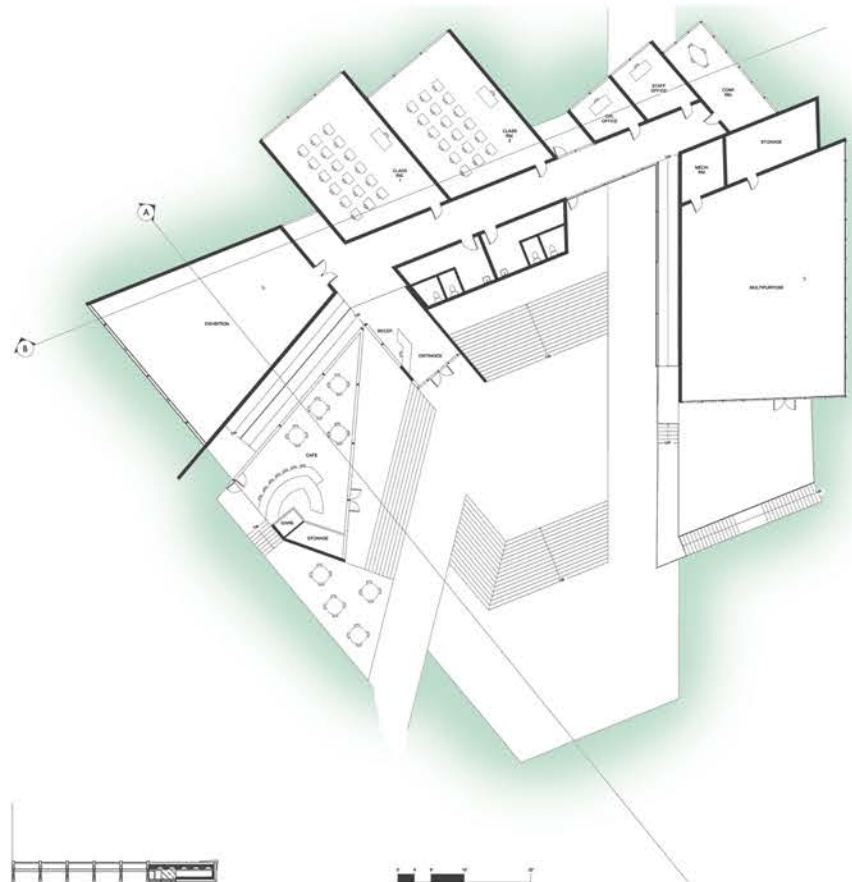
Chicago, being a busy urban city in the flat mid-west, I created a space that would encourage people to hang up their phones, unplug their ears, and return to the art of exploration.



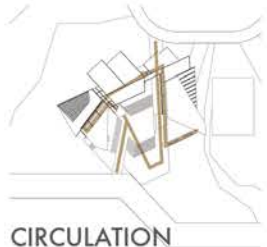
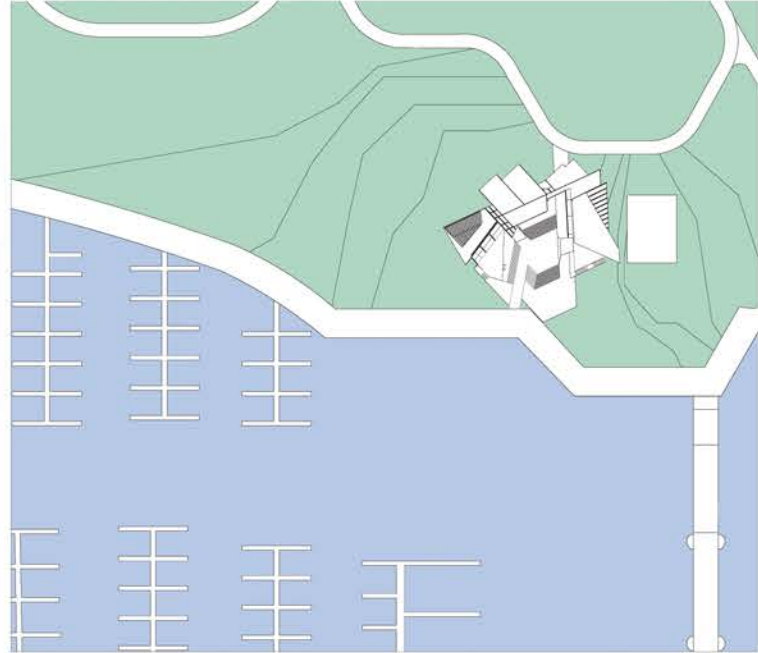
A MOUNTAIN-LIKE FORM
TO ENCOURAGE EXPLORATION
AND SYMBOLIZE THE PROCESS OF LEARNING.



EXHIBITION SPACE



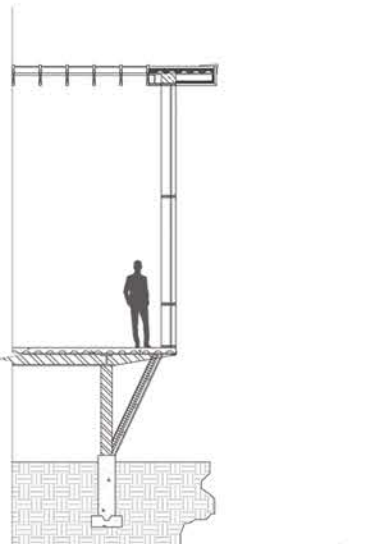
PLAN



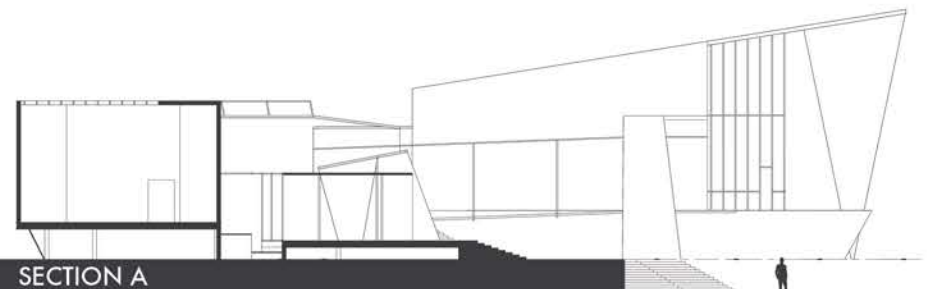
CIRCULATION



VIEWS



DETAIL WALL SECTION



SECTION A



STUDY MODEL 1



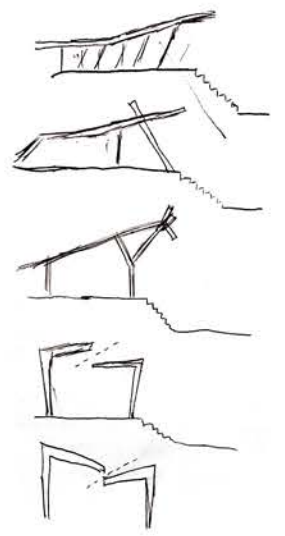
STUDY MODEL 2



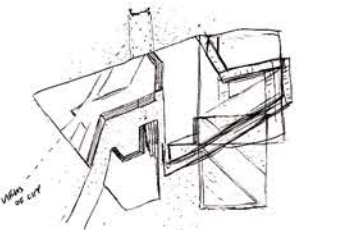
STUDY MODEL 3



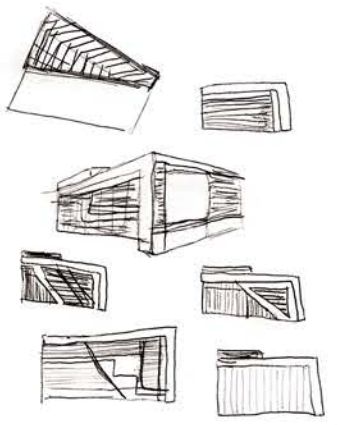
MAIN CONCEPT IDEA



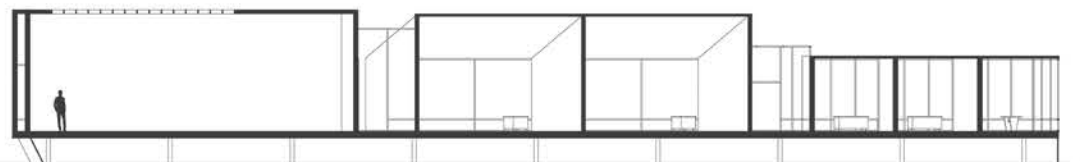
SKYLIGHT/ROOF CONCEPTS



SITE/PLAZA CONCEPT



EXHIBITION FACADE/ROOF CONCEPT



SECTION B