

Information:

Drawer: Accounts Payable - Invoices

Vendor Number: 1087070

Vendor Name: Nicor Gas

Invoice Number: 85804767714

Invoice Date: 03/27/18

PO Number:

Check Number: E0066485

Check Amount: \$ 1,055.92

Check Date: 04/11/2018

Department ID: 00721

Reviewer Name: None

Voucher Number: V0507631

Redaction Type: None

Document Type: AP Invoice

Document Below

APPROVED

nicorgas.com/myaccount

Nicor Gas

04/06/18 - CHRISTOPHER WOSACHLO

Account Summary for College of DuPage

Account Number: 85-80-47-6771 4	
Meter Number: 4622513	
Service Address: 425 Fawell Blvd Homeland Security Ctr Glen Ellyn	
Bill Period: 02/23/18 - 03/26/18 (31 days)	
Bill Issue Date: 03/27/18	
Total Previous Balance	\$2,414.79
Payment Received 03/15/2018 - Thank you!	-\$2,414.79
Remaining Balance	\$0.00
New Charges - Utility	\$1,055.92
Total Amount Due by 04/11/2018	\$1,055.92

A Message for You

Nicor Gas is optimizing meter reading routes in your area. The new routes may impact your bill issue date and due date. Your next bill will be generated later in the month than usual. To learn more, visit NicorGas.com/reroutes.

Your safety is important to us. Ask to see an employee ID when our field team is working in or around your premises. Also, verify your account information with customer service before making a transaction over the phone.

New Charges - Commercial - Non-Heat

Rate 4: Commercial Service

Delivery Charges 02/23/2018 - 03/25/2018 \$312.65

Monthly Customer Charge	\$166.27
First 150 Therms 150.00 @ \$0.1201	\$18.02
151 - 5000 Therms 1,904.38 @ \$0.0549	\$104.55
Environmental Cost Recovery 2,054.38 @ \$0.0051 =	\$10.48
Franchise Cost Adjustment	\$0.47
Efficiency Program 2,054.38 @ \$0.0062	\$12.74
Qualified Infrastructure Chrg \$ 231.86 @ 0.05%	\$0.12

Natural Gas Cost \$652.93

February @ 397.62 Therms x \$0.32	\$127.24
March @ 1,656.76 Therms x \$0.3173	\$525.69

Taxes \$90.34

Municipal Gas Use Tax for IL - Glen Ellyn 2,054.38 @ \$0.02 =	\$41.09
Utility Fund Tax \$965.58 @ 0.1%	\$0.97
State Revenue Tax \$965.58 @ 5%	\$48.28

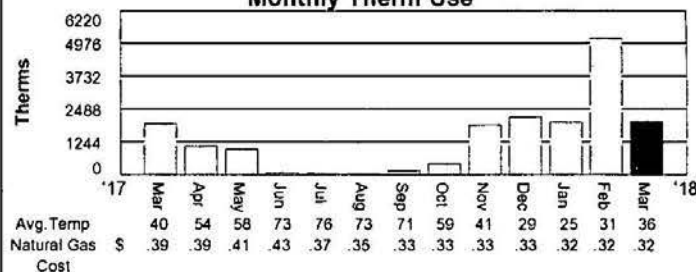
Total \$1,055.92

Monthly Energy Profile

Current Reading	Previous Reading	Usage CCF	BTU Factor	Therms	Avg. Daily Therms	Avg. Daily Therms
03/26/18 (Actual)	02/23/18 (Actual)	1983	1.036	2054.38	2017	2018
26784	24801				62.83	66.27

CCF x BTU Factor = Therms

Monthly Therm Use



Please see the reverse side of this bill for additional billing explanations.

Please do not include written inquiries as the stub is processed by machine. Return this portion with your check made payable to Nicor Gas.

Please circle an amount to add a one-time charitable donation to Sharing:

\$5 \$10 \$25 \$50

Payment Due By

04/11/2018

\$1,055.92

Account Number: 8580476771 4

Current bill \$1055.92 due by 04/11/2018

PO BOX 5407
CAROL STREAM IL 60197-5407



PO Box 2020
Aurora, IL 60507-2020

AV 01 009117 18642B 40 A**5DGT



College of DuPage
425 Fawell Blvd
Glen Ellyn IL 60137-6599

85 80 47 6771 4 0001055920 0001055920 922



IF YOU SMELL GAS: If you suspect a gas leak: **Leave the house immediately.** Don't use your phone; call Nicor Gas for assistance at 888.Nicor4u (888.642.6748) from a neighbor's house. Don't light a match. Don't turn on a light. Don't switch on anything electrical.

DANGER! Certain Older Gas Connectors May Be Dangerous!

Gas connectors are corrugated metal tubes used to connect gas appliances in your home to fuel gas supply pipes. Some older brass connectors have come apart, causing fires and explosions resulting in deaths and injuries. These older brass connectors have a serious flaw in how their tubing was joined to their end pieces. Over time, the end pieces can separate from the tubing and cause a serious gas leak, explosion or fire. To our knowledge, these dangerous uncoated brass connectors have not been made for more than 20 years, but many of them are still in use. The older these connectors get, the greater the possibility of failure. Although not all uncoated connectors have this flaw, it is very difficult to tell which ones do. **Therefore, any uncoated brass connector should be replaced immediately** with either a new plastic-coated brass or a new stainless steel connector. Connectors can wear out from too much moving, bending or corrosion. Connectors should always be replaced whenever the appliance is replaced or moved from its location.



WARNING: Only a qualified professional should check your connector and replace it if needed. Don't try to do this yourself. Moving the appliance, even slightly, whether to clean behind it or to inspect its gas connector, can cause the complete failure of one of these older weakened connectors, possibly resulting in a deadly fire or explosion. **Do not move your appliance to check the connector!** For additional information on appliance connectors please call us at 888.642.6748 or visit our website at nicorgas.com.

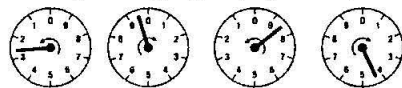
ILLINOIS COMMERCE COMMISSION

Consumer Services Div. 800.524.0795

The Consumer Services Division is available to assist customers and help resolve disputes with Nicor Gas; however, customers must first contact Nicor Gas before seeking assistance.

HOW TO READ YOUR METER

1. Read the numbers for each dial going from right to left.
2. Always read the numbers in the direction the arrow on the dial is pointing.
3. If the pointer is between two numbers, always select the smaller number, unless the pointer is between 0 and 9, then select 9.
4. If a pointer is directly on a number, look at the dial to its immediate right. If its pointer has not passed zero, record the lower number.
5. To enter your meter reading, visit nicorgas.com/myaccount.



In the example above, the reading is "2984."

PAYMENT INFORMATION

Auto Payment - You can have the amount of your gas bill electronically withdrawn from a checking or savings account on a specific date or when the bill is due. Sign up at nicorgas.com.

Options - Pay your bill by computer, mobile device, telephone or at a payment agent using your bank account, debit or credit. • • • • • Mail a check. • • • • • Payments authorize the company to make • • • • • one-time • • • • • electronic debit or debit re-presentment from your bank if the amount designated.

• • • • • Visit nicorgas.com or call 888.642.6748 for more information.

• • • • • **Payment Arrangement** - If you're behind on your gas bill payments, you may be able to establish a Deferred Payment Arrangement (DPA). Failure to pay DPA installments when due can result in default of the DPA. To make a payment arrangement, visit nicorgas.com/myaccount or call 888.642.6748.

• • • • • **Security Deposits** - In accordance with the Illinois Administrative Code, 26.030, Nicor Gas may request a cash security deposit under the following circumstances: • • • • • history of late payments, • • • • • failure to pay final bill at a prior address, service disconnection due to non-payment, meter tampering, or other reasons.

Sharing - A charitable program designed to help people pay their natural gas bills. To see if you could benefit from Sharing, contact your local Salvation Army. To contribute to Sharing, please circle the appropriate amount on your bill stub and add the amount to your payment.



TAXES

Municipal Use Tax - Some municipalities charge this tax based on your gas use. Your local municipality has an ordinance requiring collection of this tax.

Municipal Utility Tax - Some municipalities charge this tax based on utility revenue. It is authorized by Section 8-11-2 of the Illinois Municipal Code and is applied according to the local municipality's ordinance.

State Revenue Tax - This is mandated by the State of Illinois. It is not a sales tax.

State Use Tax - This tax is imposed on natural gas purchased outside of Illinois for use or consumption in Illinois.

Utility Fund Tax - This funds the ICC, which regulates all Illinois utilities and is mandated by the state.

DEFINITION OF TERMS (for more information visit nicorgas.com)

Actual Meter Reading - Your meter was read by a Nicor Gas meter reader.

Additional Products & Services - Non-utility charges such as Customer Select alternate supplier charges, HVAC warranty/repair or protection plans.

Adjustments/Other Charges - Adjustments such as credits or additional charges to your bill due to corrected billing, earned interest, late payment charges, LIHEAP, or Sharing grants.

Average Temperature - Average daily temperature during your billing period. The average temperature can help explain the amount of gas used throughout the month.

Balancing and Storage Adjustment - Customer Select customers are assessed this adjustment based on usage. The adjustment may change each month and is filed with the Illinois Commerce Commission (ICC).

BTU Factor - A factor which expresses the amount of heat content a CCF of gas contains. The BTU factor is applied to convert a volume of gas in CCF into therms and may change slightly from month to month.

Budget Plan - This plan spreads your estimated annual gas costs over 12 monthly payments.

Approximately every four months we evaluate your account and may adjust your monthly payment for changes in weather and/or the price of gas. Sign up on your bill stub or at nicorgas.com/myaccount. You must be current on your payments to sign up.

Budget Plan Amount Due - The monthly Budget Plan payment amount must be remitted by the bill due date in order to remain on the Budget Plan. Failure to pay the monthly Budget Plan payment amount due by the bill due date may result in removal from participation in the Budget Plan.

Capital Tax Adjustment - a per therm adjustment to recover or refund variations in the annual amount of Invested Capital Tax imposed on utilities pursuant to the Illinois Gas Revenue Tax Act.

CCF (100 cubic feet) - A measure of the volume of gas used. 1 CCF approximates 1 therm of gas.

Customer Read - You reported your meter reading to us.

Delivery Charges - These charges cover our operating and distribution costs. A portion of these charges varies from month to month based on your natural gas usage.

Efficiency Program Charge - A charge that pays for costs related to energy efficiency programs as approved by the Illinois Commerce Commission.

Energy Profile - Comparison between the current billing period and your gas usage for the same period last year as well as a chart showing your monthly gas usage, average temperature and gas supply charges for the past 12 months, when available.

Environmental Recovery Cost - Covers our costs for the environmental investigation and cleanup of former manufactured gas plants. Nicor Gas receives no profit from these charges.

Estimated Meter Reading - Your reading was estimated based on previous use and the weather.

Every other month, we estimate most customers' readings. Any difference between your actual use and estimated use is automatically corrected when we obtain an actual reading.

Franchise Cost - A charge for municipal franchise agreements.

Governmental Agency Adjustment - An adjustment for governmental fees and added costs, excluding franchise costs. The charge may change each month and is filed with the Illinois Commerce Commission (ICC).

Meter Exchange - If we exchanged your meter, this note means your bill is based on the reading of the meter we removed from your address.

Monthly Customer Charge - A minimum monthly charge that pays for some of the fixed costs for providing service even when you do not use any gas. This includes charges from the State of Illinois that funds energy assistance programs, renewable energy grants, and adjustments allowed by IL Public Act 96-0033.

Natural Gas Cost - The price we pay our suppliers for the natural gas we purchase and deliver to your home or business. The price, which includes applicable adjustments allowed by IL Public Act 96-0033, may change each calendar month, and is filed with the ICC.

Pressure Factor - If you require higher than normal gas pressure, the pressure factor is a multiplier that adjusts for increased gas volumes flowing through a meter.

Qualified Infrastructure Charge - A charge that pays for the costs of qualified infrastructure investments allowed under Section 9-220.3 of the Public Utilities Act.

Therm - A therm is the basic unit for measuring your natural gas consumption.

Transportation Service Credit - A credit to Customer Select customers based on usage.



ATTENTION! Please read important notice at top of page about dangerous gas connectors.

ATENCION! Para recibir una traducción al español de la advertencia relativa a conectores de gas peligrosos mencionada al inicio de esta página, favor de llamar al 888.642.6748 o visite nicorgas.com

Annual bill disclosure



At Nicor Gas we are committed to giving you the information you need to better understand your natural gas bill. Below please find our annual bill disclosure, which summarizes current natural gas rates, riders and definition and terms. This disclosure complies with Section 501.410 of Title 83 of the Illinois Administrative Code.

Above the Delivery Charges section of your bill, Nicor Gas shows a brief description of your delivery rate classification for your natural gas service. The most common rate classification that applies to non-residential customers is:

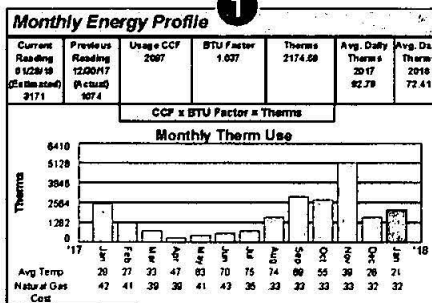
Rate 4 – General Service is available to any customer using gas for general purposes. Customers served under Rate 4 may elect transportation service under the Company's Rider 15 – Customer Select, or Rider 25 – Firm Transportation Service and purchase gas supplies from an alternative gas supplier. The Rate 4 monthly Customer Charge is based on Meter Class sizes A-C at \$25.85, \$90.00 and \$165.00, respectively.

Below please find an example of a Rate 4 classification bill. Please use the chart and definition of terms to see how rates are determined.

Account Summary for Commercial Customers, Inc.		A Message for You	
Account Number: 00-00-00-0000 0		Your safety is important to us. Ask to see an employee ID when our field team is working in or around your premises. Also, verify your account information with customer service before making a transaction over the phone.	
Meter Number: 0000000			
Service Address: 123 Street Address, Anytown			
Bill Period: 12/30/17 - 01/28/18 (29 days)			
Bill Issue Date: 01/28/18			
Total Previous Balance			
Payment Received 1/13/18 - Thank you!			
Remaining Balance			
New Charges - Utility			
Total Amount Due by 02/19/2018			

New Charges - Commercial - Heat Rate 4: Commercial Service

2	Delivery Charges 12/30/2017 - 01/18/2018	\$270.08
	Monthly Customer Charge	\$91.27
	First 150 Therms 150 @ \$0.1201	\$18.02
	151 - 5000 Therms 2,024.59 @ \$0.0549	\$111.15
	Environmental Cost Recovery 149.99 @ \$0.0047	\$0.70
	Environmental Cost Recovery 2,024.60 @ \$0.0051	\$10.33
	Government Agency Compensation Adjustment	\$0.04
	Franchise Cost Adjustment	\$0.10
	Efficiency Program 2,174.59 @ \$0.0062	\$13.48
	Qualified Infrastructure Chrg \$ 14.84 @ 12.68%	\$1.88
	Qualified Infrastructure Chrg \$ 200.30 @ 11.54%	\$23.11
3	Natural Gas Cost	\$697.37
	December @ 149.99 Therms x \$0.33	\$49.50
	January @ 2,024.60 Therms x \$0.32	\$647.87
4	Taxes	\$99.16
	Municipal Utility Tax for Anytown \$967.45 @ 5.15%	\$49.82
	Utility Fund Tax \$967.45 @ 0.1%	\$0.97
	State Revenue Tax \$967.45 @ 5%	\$48.37
Total		\$1,066.61



Rate 4 - General Service (Heat or No-heat)

Current Meter Reading	3171	Delivery Charges	\$270.08
Previous Meter Reading	1074	Monthly Customer Charge	\$91.27
Usage CCF	2097	Distribution Charge 150 @ \$0.1201	\$18.02
BTU Factor	1.037	Distribution Charge 2,024.59 @ \$0.0549	\$111.15
Usage Therms (CCF x BTU Factor)	2174.59	Env Cost Recovery 149.99 @ \$0.0047	\$0.70
Bill Period	12/30/17 - 01/28/18	Env Cost Recovery 2,024.60 @ \$0.0051	\$10.33
# of Bill Period Days	29	Gov Agency Compensation Adj	\$0.04
Mo. Customer Charge, Meter Class B	\$90.00	Franchise Cost Adj	\$0.10
Rd 1 Customer Charge Adj	\$5.30	Efficiency Program 2,174.59 @ \$0.0062	\$13.48
Rd 26 Uncollectible Expense Adj	-\$4.03	Qualified Infrastructure Chrg \$14.84 @ 12.68%	\$1.88
Distribution Charge (first 150 therms)	\$0.1201	Qualified Infrastructure Chrg \$200.30 @ 11.54%	\$23.11
Distribution Charge (next 4,850 therms)	\$0.0549	* Base Revenue = Customer Charge + Rd 26 + Distribution Charge + (Usage Therms x Rd 5 Rate)	
Distribution Charge (over 5,000 therms)	\$0.0482	* \$215.14 = \$90.00 + (\$4.03) + \$18.02 + \$111.15 + (2,174.59 x \$0.00)	
Rd 12 Environmental Rate (Dec.)	\$0.0047	Natural Gas Cost	\$697.37
Rd 12 Environmental Rate (Jan.)	\$0.0051	December @ 149.99 Therms x \$0.33	\$49.50
Rd 7 Gov Agency Compensation Adj	\$0.04	January @ 2,024.60 Therms x \$0.32	\$647.87
Rd 2 Franchise Cost Adj	\$0.10	Taxes	\$99.16
Rd 30 Efficiency Program Rate	\$0.0062	Municipal Utility Tax \$967.45 @ 5.15%	\$49.82
Rd 32 Qualified Infra Rate (Dec.)	12.68%	Utility Fund Tax \$967.45 @ 0.1%	\$0.97
Rd 32 Qualified Infra Rate (Jan.)	11.54%	State Revenue Tax \$967.45 @ 5.0%	\$48.37
Rd 5 Storage Service Recovery Rate	\$0.00	Total Current Charges	
Rd 6 Natural Gas Cost (Dec.)	\$0.33		
Rd 6 Natural Gas Cost (Jan.)	\$0.32		
Municipal Use Rate	5.15%		
Utility Fund Tax Rate	0.10%		
State Revenue Tax Rate	5.00%		
State Revenue Tax	\$0.024		

Definition of Terms

Following are definitions for some of the most common terms which may appear on a natural gas bill statement, as well as definitions for our riders which are used to determine your charges.

BTU Factor

A factor which expresses the amount of heat content a CCF of gas contains. The BTU factor is applied to convert a volume of gas in CCF into therms and may change slightly from month to month.

Distribution Charge

A variable charge billed each month to cover a portion of Nicor Gas' cost to make gas service available to customers. The charge varies based on the quantity of gas used in the bill period.

Monthly Customer Charge

A fixed charge billed each month to cover a portion of Nicor Gas' cost to make gas service available to customers. This is the minimum charge for most customers. The total monthly customer charge that appears on the bill may include Rd 1 and Rd 26 costs, if applicable.

Municipal Use Tax Rate

Some municipalities charge this tax based on your gas use. Your local municipality has an ordinance requiring collection of this.

Municipal Utility Tax Rate

Some municipalities charge this tax based on utility revenue. It is authorized by Section 8-11-12 of the Illinois Municipal Code and is applied according to the local municipality's ordinance.

Rd 1 Customer Charge Adj

A fixed monthly charge mandated by the State which funds low-income energy assistance programs, renewable energy, and clean coal technologies. This cost is included in the monthly customer charge.

Rd 2 Franchise Cost Adj

A charge for municipal franchise agreements.

Rd 5 Storage Service Recovery Rate

A variable charge or credit billed each month to recover or refund the cost of Nicor Gas' investment in unsubscribed or over-subscribed gas storage capacity.

Rd 6 Balancing & Storage Adj

A variable charge billed each month to Customer Select customers that recovers the cost of services Nicor Gas uses to balance the volume of 3rd-party Supplier deliveries with actual gas usage. Sales customers pay for these same charges through Nicor Gas' monthly natural gas cost.

Continued on reverse

Annual bill disclosure



Other rate classifications for non-residential customers could include:

Rate 5 – Seasonal Use Service is available to non-residential customers using the Company's gas service for general purposes and with minimal winter use. Annual usage is limited to 700,000 therms and usage during the winter period, as defined in the tariff, may not exceed 5% of total annual usage. Distribution charges are \$0.0473 per therm for all therms during the January-April winter period and \$0.0261 per therm for all therms during the summer period May-December. Rate 5 may also be combined with the Company's Rider 15 – Customer Select or Rider 25 Firm Transportation Service, providing options to purchase gas from an alternative gas supplier.

Rate 6 – Large General Service is available to any non-residential customer using the Company's gas service for general purposes, and generally preferable for customers using more than 1 million therms annually. Rate 6 carries a monthly customer charge of \$2,000, distribution charge of \$0.0329 for all therms, a minimum monthly bill amount of \$3,500, and a Gas Supply Cost component equal to the customer's Maximum Daily Contract Quantity (MDCQ) times 0.49 times the Demand Gas Cost (DGC). Daily meter reading equipment is also required. Rate 6 may also be combined with Rider 25 – Firm Transportation Service for use with an alternative gas supplier.

Rate 7 – Large Volume Service is available to any non-residential customer using the Company's gas service for general purposes, and generally preferable for customers using more than 10 million therms annually. Rate 7 carries a monthly customer charge of \$3,450, a demand charge based on the highest day of use in the bill period, a distribution charge of \$0.0177 for all therms, a minimum monthly bill amount of \$9,500, and a Gas Supply Cost component equal to the customer's Maximum Daily Contract Quantity (MDCQ) times 0.49 times the Demand Gas Cost (DGC). Daily meter reading equipment is also required. Rate 7 may also be combined with Rider 25 – Firm Transportation Service for use with an alternative gas supplier.

Rate 74 – General Transportation Service is available to non-residential customers using the Company's gas service for general purposes. Similar to Rider 25 – Firm Transportation Service, customers purchase gas from an alternative gas supplier; however, customers have the option to elect a reduced level of Company-supplied backup, as little as 0%, and also may elect a specific level of storage banking service (SBS) capacity. Monthly Customer Charges are identical to Rate 4, distribution charges are lower; however, storage banking service and any elected level of Firm Backup Service are separately charged. Daily meter reading equipment is a requirement.

Rate 75 – Seasonal Use Transportation Service is available to non-residential customers using the Company's gas service for general purposes and with minimal winter use. Annual usage is limited to 700,000 therms and usage during the winter period, as defined in the tariff, may not exceed 5% of total usage. Similar to Rate 74 – General Transportation Service, customers purchase gas from an alternative gas supplier, have the option to elect a reduced level of Company-supplied backup, as little as 0%, and also may elect a specific level of storage banking service (SBS) capacity. Monthly Customer Charges are identical to Rate 5, distribution charges are lower at \$0.0246 per therm for all therms during the winter period December-March and \$0.0034 per therm during the summer period April-November. Storage banking service and any elected level of Firm Backup Service are separately charged. Daily meter reading equipment is a requirement.

Rate 76 – Large Transportation Service is available to non-residential customers using the Company's gas service for general purposes, and generally preferable for customers using more than 1 million therms annually. Similar to Rates 74 and 75, customers purchase gas from an alternative gas supplier. Customers have the option to elect a reduced level of Company-supplied backup, as little as 0%, and also may elect a specific level of storage banking service (SBS) capacity. Rate 76 carries a monthly Customer Charge of \$2,000, distribution charge of \$0.0201 for all therms, a minimum monthly bill amount of \$2,900. Storage Banking Service (SBS) and any elected level of Firm Backup Service are separately charged. Daily meter reading equipment is a requirement.

Rate 77 – Large Volume Transportation Service is available to non-residential customers using the Company's gas service for general purposes, and generally preferable for customers using more than 10 million therms annually. Similar to Rate 76, customers purchase gas from an alternative gas supplier. Customers have the option to elect a reduced level of Company-supplied backup, as little as 0%, and also may elect a specific level of storage banking service (SBS) capacity. Rate 77 carries a monthly Customer Charge of \$3,450, a demand charge based on the highest day of use in the bill period, distribution charge of \$0.0044 for all therms, a minimum monthly bill amount of \$11,200. Storage Banking Service (SBS) and any elected level of Firm Backup Service are separately charged. Daily meter reading equipment is a requirement.

Definition of Terms

Rd 6 Natural Gas Cost

The price we pay our suppliers for the natural gas we purchase and deliver to your home. The price may change each calendar month and is filed with the Illinois Commerce Commission (ICC).

Rd 7 Gov Agency Compensation Adj

An adjustment for governmental fees and added costs, excluding franchise costs. The charge may change each month and is filed with the ICC.

Rd 12 Environmental Rate

Covers our costs for the environmental investigation and cleanup of former-manufactured gas plants. Nicor Gas receives no profit from these charges.

Rd 15 Transp Service Credit Rate

A credit to Customer Select customers based on usage.

Rd 26 Uncollectible Expense Adj

A fixed monthly charge or credit which recovers or refunds the difference between Nicor Gas' actual annual uncollectible expense and the amount of uncollectible expense included in our delivery service rates. This cost is included in the monthly customer charge.

Rd 30 Efficiency Program Rate

A charge that pays for costs related to energy efficiency programs as approved by the ICC.

Rd 32 Qualified Infra Rate

A charge that pays for the costs of qualified infrastructure investments allowed under Section 9-220.3 of the Public Utilities Act.

State Revenue Tax Rate

This is mandated by the State of Illinois. It is not a sales tax.

State Use Tax Rate

This tax is imposed on natural gas purchased outside of Illinois for use or consumption in Illinois.

Supplier Gas Charge (estimated)

A fixed or variable charge billed each month to Customer Select customers for the quantity of 3rd-party gas purchased from your Supplier during the bill period. This charge replaces Nicor Gas' monthly natural gas cost; however, this charge is not regulated by the ICC.

Usage CCF

A measure of the volume of gas used. 1 CCF approximates 1 therm of gas.

Utility Fund Tax Rate

This funds the ICC, which regulates all Illinois utilities and is mandated by the state.