

Information:

Drawer: Accounts Payable - Invoices

Vendor Number: 1178068

Vendor Name: ComEd/Commonwealth Edison-Carol Stream

Invoice Number: 319019-041823

Invoice Date: 4/18/2023

PO Number:

Check Number: 0311746

Check Amount: \$ 632.47

Check Date: 05/09/2023

Voucher Number: V0784355

Document Type: AP Invoice

Document Below



An Exelon Company

**Visit ComEd.com****Customer Service / Power Outage****English**

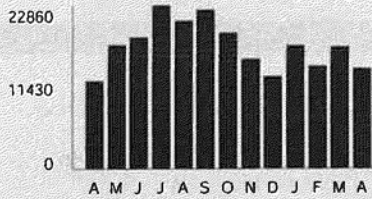
1.877.4COMED1 (1.877.426.6331)

**Español**

1.800.95.LUCES (1.800.955.8237)

**Hearing/Speech Impaired**

1.800.572.5789 (TTY)

**Your Usage Profile****13-Month Usage (Total kWh)****Electric Usage**

Month	kWh
Apr-22	12300
May-22	17340
Jun-22	18420
Jul-22	22860
Aug-22	20760
Sep-22	22320
Oct-22	19080
Nov-22	15360
Dec-22	12960
Jan-23	17220
Feb-23	14400
Mar-23	17040
Apr-23	14040

Month Billed	Average Daily kWh	Temp
Last Year	424.1	42
Last Month	549.7	34
Current Month	484.1	47

Page 1 of 4

**Account Number 6843319019**

Name COLLEGE OF DUPAGE

Service Location 500 KUHN RD CAROL STREAM

Phone Number 630-942-4225

Issue Date April 18, 2023

**Bill Summary**

Previous Balance	\$584.10
Total Payments	\$0.00
<b>Amount Due on June 5, 2023</b>	<b>\$1,216.57</b>

**Meter Information**

Read Dates	Meter Number	Load Type	Reading Type	Previous	Meter Reading Present	Difference	Multiplier X	Usage
3/20-4/18	230033556	General Service	Total kWh	27220 Actual	27454 Actual	234	60	14040
3/20-4/18	230033556	General Service	On Pk kW	0.00 Actual	0.67 Actual	0.67	60	40.40
3/20-4/18	230033556	General Service	Off Pk kW	0.00 Actual	0.65 Actual	0.65	60	38.84

Service from 3/20/2023 to 4/18/2023 - 29 Days

Retail Delivery Service - 0 to 100 kW

**Delivery Services - ComEd****\$420.74**

Customer Charge	16.82
Standard Metering Charge	6.24
Distribution Facilities Charge	40.40 kW X 8.55000 345.42
IL Electricity Distribution Charge	14,040 kWh X 0.00131 18.39
Nonstandard Facilities Charge	33.87

**Taxes and Other****\$211.73**

Environmental Cost Recovery Adj	14,040 kWh X 0.00036 5.05
Renewable Portfolio Standard	14,040 kWh X 0.00502 70.48
Zero Emission Standard	14,040 kWh X 0.00195 27.38
Carbon-Free Energy Resource Adj	14,040 kWh X -0.00033 -4.63
Energy Efficiency Programs	14,040 kWh X 0.00461 64.72
Energy Transition Assistance	14,040 kWh X 0.00072 10.11
Deferred Prosecution Agreement	14,040 kWh X -0.00505 -70.90
Franchise Cost	\$421.12 X 1.18300% 4.98
State Tax	45.01

For Electric Supply Choices visit  
pluginillinois.org

(continued on next page)

Return only this portion with your check made payable to ComEd. Please write your account number on your check.



An Exelon Company

**To pay by phone call 1-800-588-9477.  
A convenience fee will apply.**

Account Number

**6843319019**

Payment Amount

Please pay this  
amount by 6/5/2023**\$1,216.57**

0121500 01 AB 0.507 \*\*AUTO T1 0 1076 60137-670825 -C02-00-P21521-11 56



COLLEGE OF DUPAGE  
COLLEGE OF DUPAGE  
ACCTS PAYABLE  
425 FAWELL BLVD  
GLEN ELLYN, IL 60137-6708



COMED  
PO BOX 6111  
CAROL STREAM, IL 60197-6111



684331901900012165731561216570

1076-02-0121500-0001-0059509

Municipal Tax	59.53
<b>Total Current Charges</b>	<b>\$632.47</b>
<b>Miscellaneous</b>	<b>\$584.10</b>
Charges from previous bill	584.10
<b>Total Amount Due</b>	<b>\$1,216.57</b>

#### Message Center

##### ComEd

- This month's bill includes a one-time credit designated as "Deferred Prosecution Agreement" in accordance with the Illinois Commerce Commission's resolution of its investigation.
- **WAYS TO PAY:** Positive changes in the way you pay your bill! Additional fees are no longer assessed on payments made by credit and debit card, or electronic check. And you can now use PayPal, it's secure, convenient and free! Visit [ComEd.com/Pay](http://ComEd.com/Pay)
- **YOUR COMED BILL:** Need help understanding your bill line items? Get definitions at [ComEd.com/UnderstandBill](http://ComEd.com/UnderstandBill) or call 800-334-7661
- **STOP ENERGY SCAMS:** Scammers may threaten to disconnect service in exchange for immediate payment or personal information. We will never demand payment using prepaid cash cards, third-party banking apps, or cryptocurrency such as Bitcoin. Learn more: [ComEd.com/ScamAlert](http://ComEd.com/ScamAlert).
- **ENVIRONMENTAL DISCLOSURE STATEMENT:** ComEd's Annual Statement can now be found online at [ComEd.com/EnvironmentalDisclosure](http://ComEd.com/EnvironmentalDisclosure)
- **RESOLVING DISPUTES:** We are here to help you if you have a dispute on your bill. However, the Illinois Commerce Commission Consumer Division is available at 800-524-0795.

1076-02-0121500-0001-0059509



Recycling symbol

CME906R 03/10



## Savings For Your Small Business



## Reduce your costs and make improvements through ComEd's Energy Efficiency Program

The Small Business offering is a surefire way to save money and use less energy. We can easily identify savings through a no-cost facility assessment performed by an Authorized Energy Efficiency Service Provider. They will identify energy improvements and determine available incentives that can cover as much as 75% of your project cost. Saving money and energy for your small business couldn't be easier! Start your savings journey at [ComEd.com/SmallBiz](http://ComEd.com/SmallBiz).



## Yearly Comparison Reliability Report

2022

2021

## ► Your Reliability

## ► Power Outages

## ► Your Reliability

## ► Power Outages

99.99 %

1

99.93 %

2



## Power You Can Rely On



### When a storm is coming keep informed with updates

You can count on ComEd to keep the lights on and keep you informed.

Even during a storm, you can count on fewer and shorter outages. Access tools and information through any connected device with the ComEd app.

Download the ComEd app at [ComEd.com/App](http://ComEd.com/App) for dependable information.

## Your 2022 Personalized Reliability Report

500 Kuhn Rd

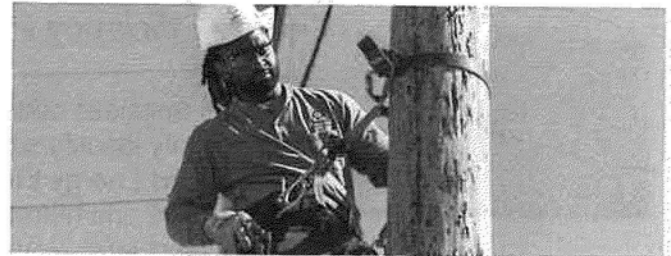
Dear College Of Dupage,

Providing our customers with reliable energy is the goal of every ComEd employee. We work 24 hours a day, seven days a week, to design, build and maintain a system that will provide the energy you need for your business.

Our commitment to our customers resulted in best-on-record reliability in 2022. We are committed to investing in the system to make sure that we are always there when you need us.

The attached report provides a summary of the reliability you experienced in your business last year. For more information about the work we are doing to improve the grid, please visit [ComEd.com/SmartGrid](http://ComEd.com/SmartGrid).

Terry Donnelly  
President & Chief Operating Officer



### Electric Service Reliability

Your Business



99.99 %

Your Town



99.99 %

ComEd



99.99 %



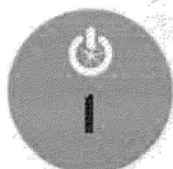
### Electric Service Reliability

#### Your Reliability



Your power  
was on 99.99 %  
of the time.

#### Power Outages



Your business  
experienced  
1 power  
outage(s).

#### Last Power Outage



Duration  
9 Minutes.  
This outage was  
caused by  
Tree Related.



### Power Outage(s)



Your business experienced  
1 power outage(s)  
during 2022.

*Most recent outages during 2022.*

DATE	CAUSE OF OUTAGE	DURATION OF OUTAGE
6/30/22	Tree Related	9 Minutes

*A power outage is defined as  
a loss of power lasting one minute or more.*



### How To Report An Outage Or Downed Power Line



Use the free ComEd  
mobile app to text **OUT** to  
**26633** (COMED) if you've  
already subscribed to  
Outage Alerts.



Call **800-334-7661**.  
During storms, our Care  
Center may experience  
high wait times.



Log on to Twitter  
or Facebook to  
report an outage.

**"Zerrudo, Marivic"** <zerrudom@cod.edu>

---

**Attached Image**

---

**"Zerrudo, Marivic"** <zerrudom@cod.edu>

Fri, Apr 21, 2023 at 09:00 PM UTC

CC:

BCC:

---

**1 attachment**

3562\_001.pdf