



**Are you ready to be an  
RN???**

# Objectives of this session



- Understand the NCLEX-RN and its administration
- Accurately complete the NCLEX-RN exam registration and application for licensure (in IL)
- Complete the program evaluation

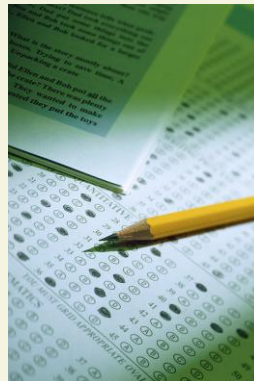
# BEST Resource



- 2017 NCLEX Examination Candidate Bulletin
  - Test participation
  - Test plan
- WEBSITE:
  - <https://www.ncsbn.org/nclex.htm>

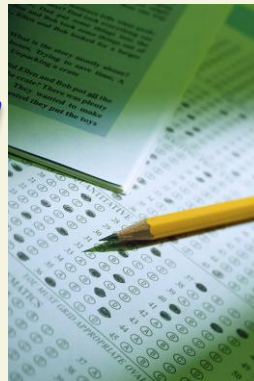
# Who is NCSBN? What about IDFPR?

- NCSBN
  - <https://www.ncsbn.org/index.htm>
- NCSBN Members ---
  - <https://www.ncsbn.org/boards.htm>
- Illinois Member to NCSBN is IDFPR
  - <http://www.idfpr.com/>



# Who is NCSBN? What about IDFPR?

- NCSBN
  - <https://www.ncsbn.org/index.htm>
- NCSBN Members ---
  - <https://www.ncsbn.org/boards.htm>
- Illinois Member to NCSBN is IDFPR
  - <http://www.idfpr.com/>





# **NCLEX-RN**

## **...THE TEST PLAN**

# Distribution of CONTENT



Client Needs	Percentage of Items from Each Category/Subcategory
Safe and Effective Care Environment	
■ Management of Care	17-23%
■ Safety and Infection Control	9-15%
Health Promotion and Maintenance	6-12%
Psychosocial Integrity	6-12%
Physiological Integrity	
■ Basic Care and Comfort	6-12%
■ Pharmacological and Parenteral Therapies	12-18%
■ Reduction of Risk Potential	9-15%
■ Physiological Adaptation	11-17%

<https://www.ncsbn.org/8507.htm> (Webinar)

# C.A.T.

- **C**omputerized  
**A**daptive  
**T**esting

<https://www.ncsbn.org/1216.htm>

- What is it?
- How does it work?
- What are the P/F rules?

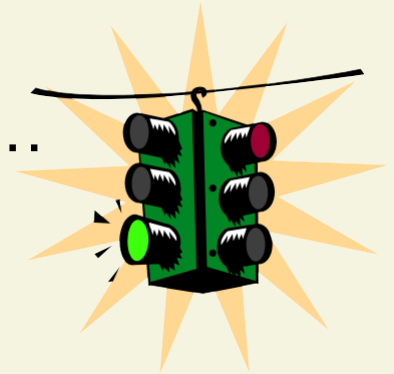






Applying for the exam and license...

**READY, SET, GO**





TEST → NCSBN →  
PEARSON VUE

LICENSE → IDFPR →  
CONTINENTAL TESTING  
SERVICE (CTS)

# Candidate

# CANDIDATE PROCESS



✓ Apply for licensure/eligibility to the board of nursing

AND

✓ Register and pay the \$200 fee for the NCLEX Examination with Pearson VUE

✓ Acknowledgement of Registration

✓ Authorization to Test (ATT)

Eligibility Granted

Continental Testing Service



# Do it when???



- Week after graduation
  - Apply --- Licensure...with WHO?
  - Register --- NCLEX-RN ...with WHO??
- Three weeks after licensure
  - Schedule your test...when you get your ATT ... from WHO?
- Exam day
- After exam day

# Other information in the Candidate Bulletin

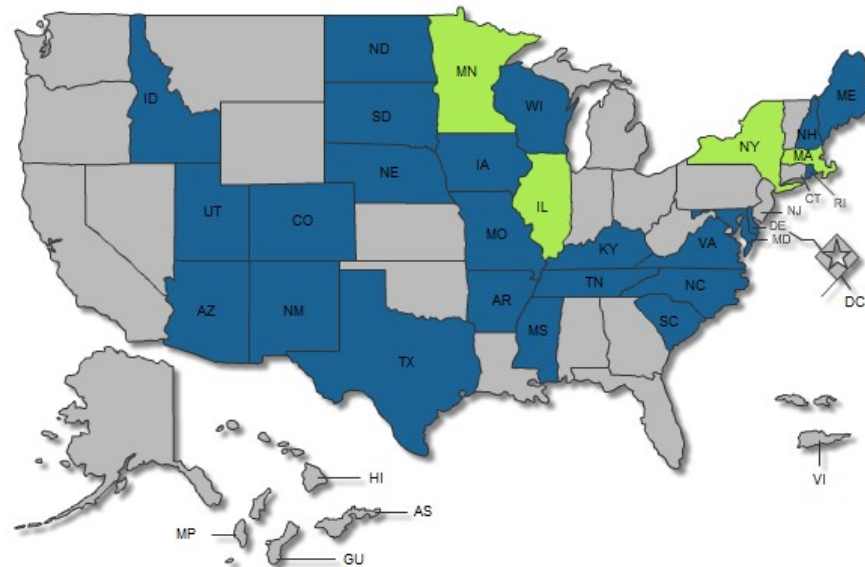


- Testing accommodations **p.4**
- Changing your appointment **p.6** ..it does cost \$\$\$\$
- Test rules and regulations **p.8**
  - Remember to take your ATT and a picture ID...names MUST be the same
- Check-In Process for day of testing **p.11**

# Nursing Licensure Compact

- <https://www.ncsbn.org/nurse-licensure-compact.htm>

NLC Member States (click state for contact info)





**Good Luck!**