

# Chapter 10 - Customizing Your System

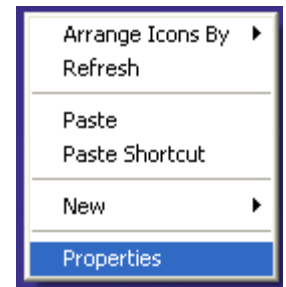
## Additional Activities

### PATTERNS AND WALLPAPER

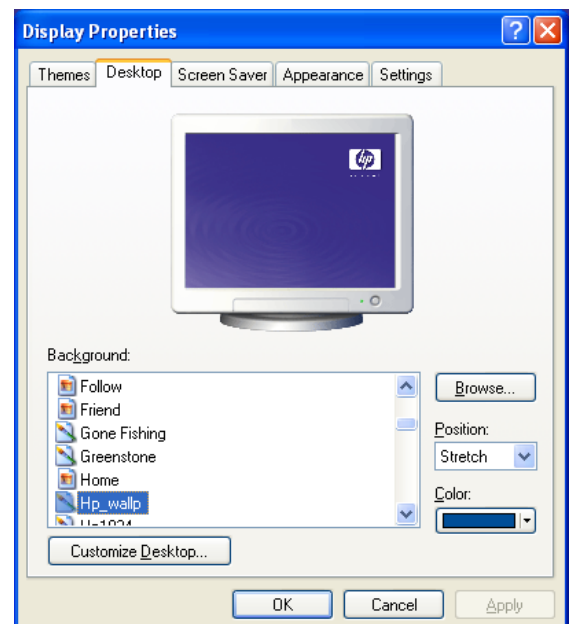
- **Pattern** - small grid of repeating dots that fills screen.
- **Wallpaper** - graphic image used to cover background of desktop.
  - Stored as bitmap graphics file in standard .bmp format in Windows folder.
  - Create own wallpaper.
    - Use graphics program.
    - Scan in image and modify it.
    - Modify existing wallpaper.
    - Purchase wallpaper files.
  - Use either wallpaper or pattern.
    - Pattern like paint on wall.
    - Wallpaper covers pattern.
      - Pattern will show in areas not covered by wallpaper.
  - Both wallpapers and patterns use memory.
  - Wallpaper uses more memory than a pattern.

### 10.5 ● Activity ● Using Patterns and Wallpapers

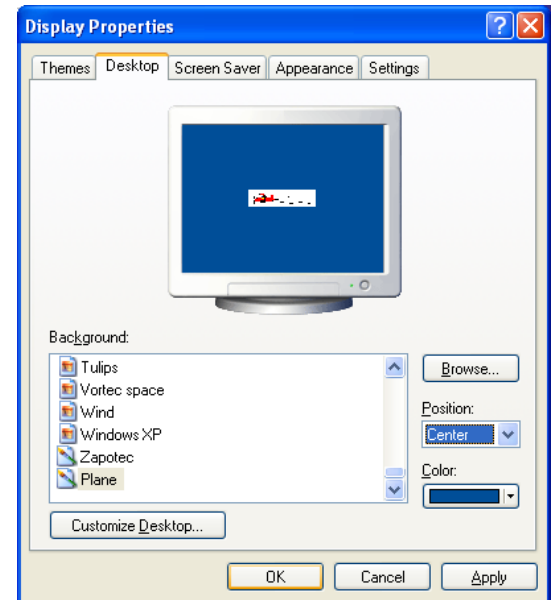
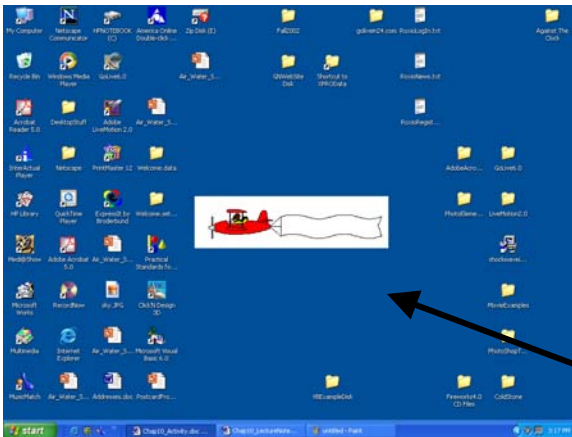
- Right-click the **desktop**. Click **Properties**.



- Click the Desktop tab.
- Click the **Browse...** button. This will allow you to choose a graphic for your desktop that is not stored in the Windows folder.
- Locate the XPROData folder on your hard drive.
- Click on plane.bmp.
- Click OK.



- Click the down arrow to choose *Center* under the *Position* Option.
- Click *OK*.



Centered image.

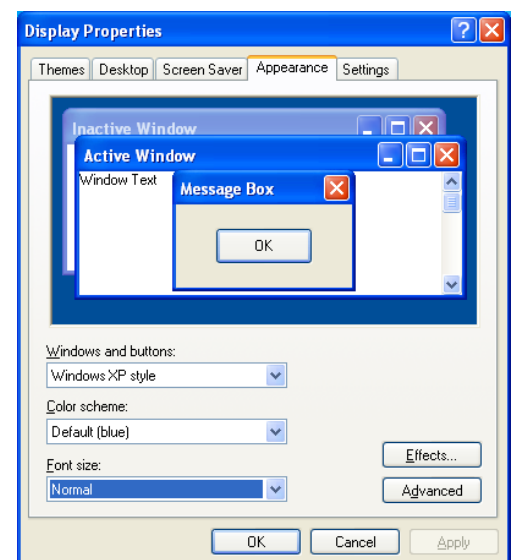
- Right-click the **desktop**. Click **Properties**.
- Click the down arrow to choose *Tile* under the *Position* Option.
- Click *OK*.

Tiled images

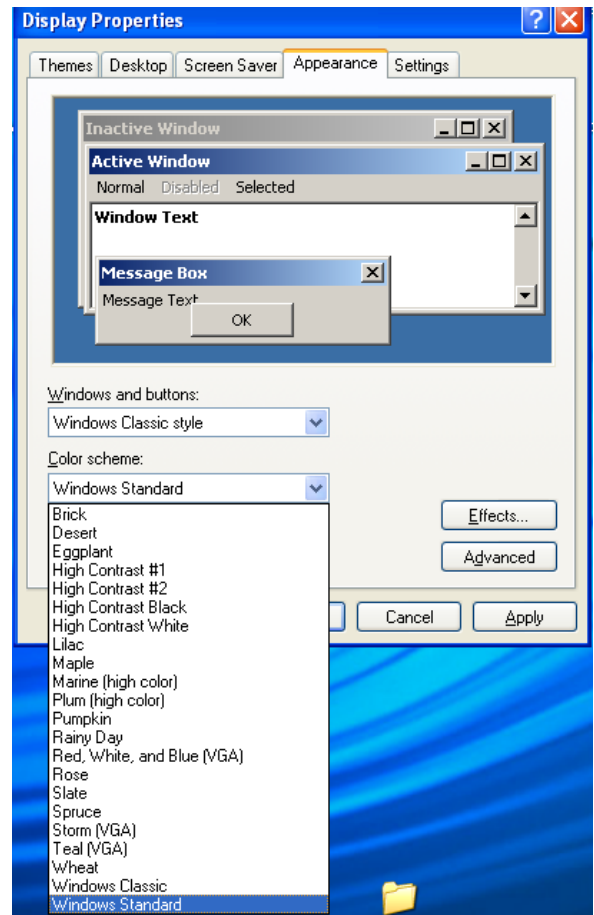
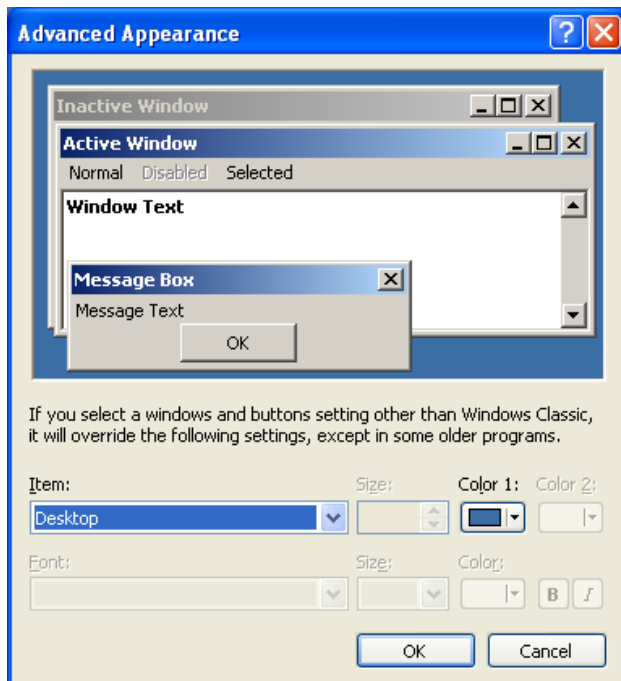


## 10.11 • Activity • Customizing the Desktop

- Right-click desktop. Click **Properties**. Click **Appearance** tab. Windows and buttons set at Windows XP style.
- Click the down arrow in *Color* scheme drop-down list box. You will have only several choices. Click one of the colors.
- Click the down arrow in the *Font* size drop-down list box and choose one of the three font sizes.
- Click **Apply**.
- Right-click desktop. Click **Properties**. Click **Appearance** tab.
- Reset the *Color* scheme to *Default(blue)* and *Font* size to *normal*.



- Click **Apply**.
- Click the Windows and buttons drop-down list box. Click **Windows Classic style**.
- Click Rainy Day or any of the choices you like. Windows Standard is the default.
- Click **Apply**.
- Click the Advanced button.



- You can click the down-arrow in the Item: list box or click on the appropriate item in the section above to change the appearance of your desktop and open windows.

- Experiment with different items, change colors, fonts, sizes, etc. The changes will be reflected in the appearance window at the top. To keep the settings, click **OK**. To return to your settings, click **Cancel**.

## SCREEN RESOLUTION SETTINGS

- Standard VGA - default screen configuration.
  - Grid of 640 × 480 pixels.
  - 16-color palette.
- W98 did not take advantage of all settings video card/monitor can support.
- Popular monitor size 15" & 17" with 19" gaining.

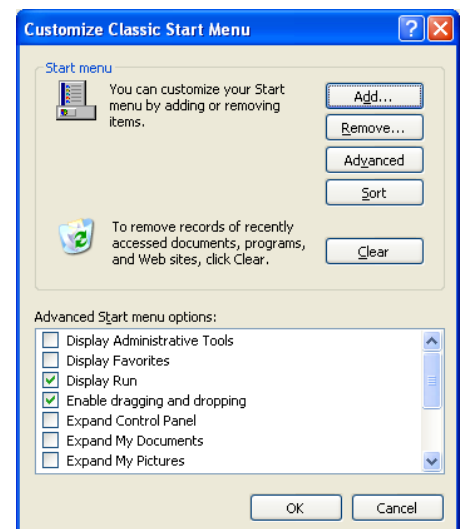
- 800 x 600 settings for text.
- 1,024 x 768 settings for graphics.
- Higher resolution.
  - Gain desktop workspace.
  - Display sharper but smaller.
- Some monitors/video cards allow display of more colors.
- Four choices.
  - 16 colors or 256 colors.
  - High Color (16 bits - 16,000 colors).
  - True Color (32 bits- 16 million colors).
- True Color - screen display as clear as high quality color slide.
- Drawback to higher resolutions/more colors.
  - System works harder to manage display.
- Amount of colors/resolutions limited by type of monitor and video card.

## CUSTOMIZING THE START MENU

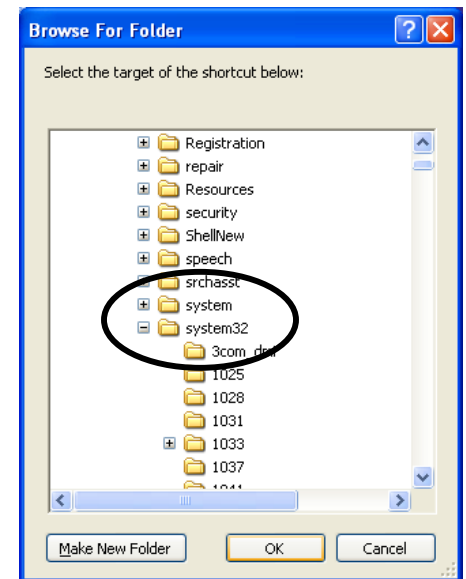
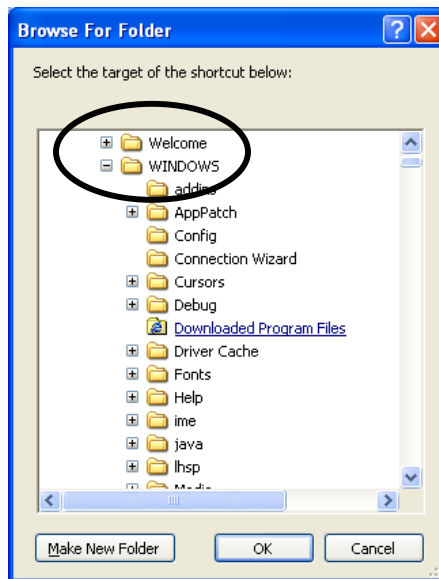
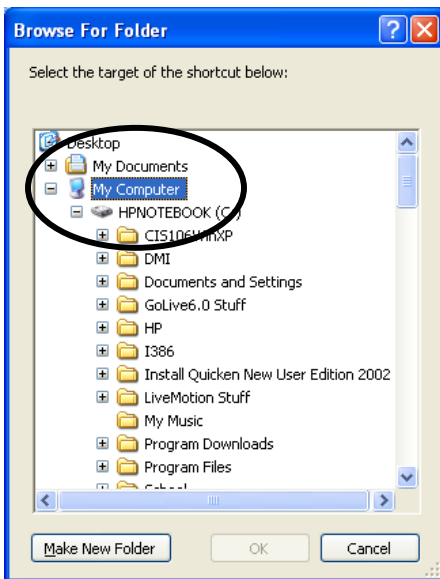
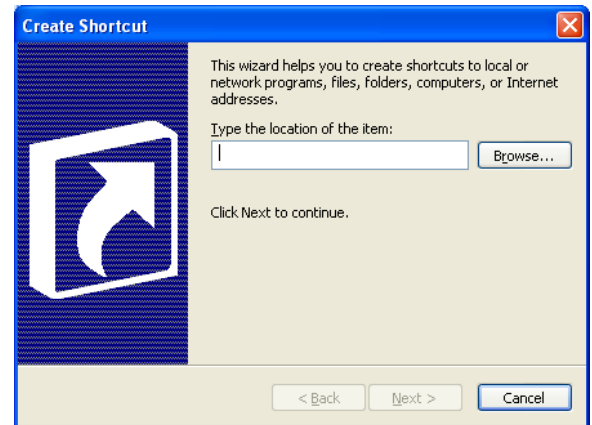
- Installation of program can place items on Start menu as well as on Program Menu.
- Menus can become large and unwieldy.
- Purpose of menus.
  - Click and point - quickly choose program of interest.
  - To make efficient use of menus may want to alter Start menu.
- Two sections of Start menu can be altered.
  - Top of Start Menu.
  - Cascading Programs menu.
- In these two sections, can move/remove or place any objects you wish.

## 10.20 ● Activity ● Customizing the Start Menu

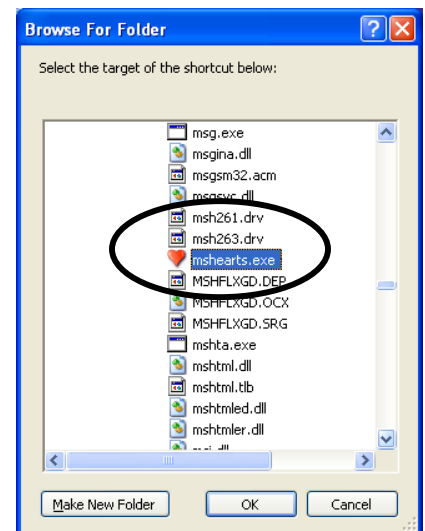
- You can customize your Start menu by adding or removing items.
- Click the **Add** button.
- Click the **Browse...** button and search for the location of the program you want to add to the start menu.



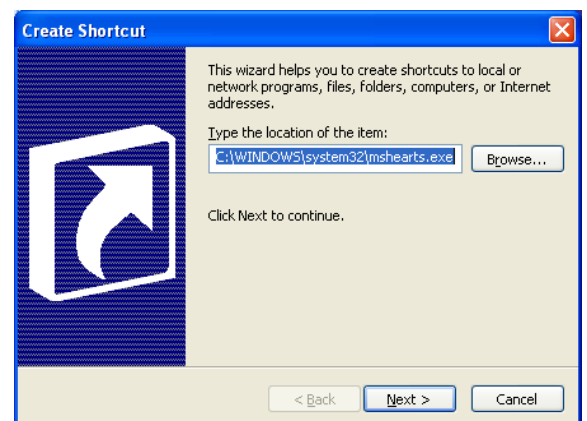
- Click the plus sign next to *My Computer*.
- Click the plus sign next to your hard drive.
- Click the plus sign next to *Windows*.
- Click the plus sign next to *system32*.



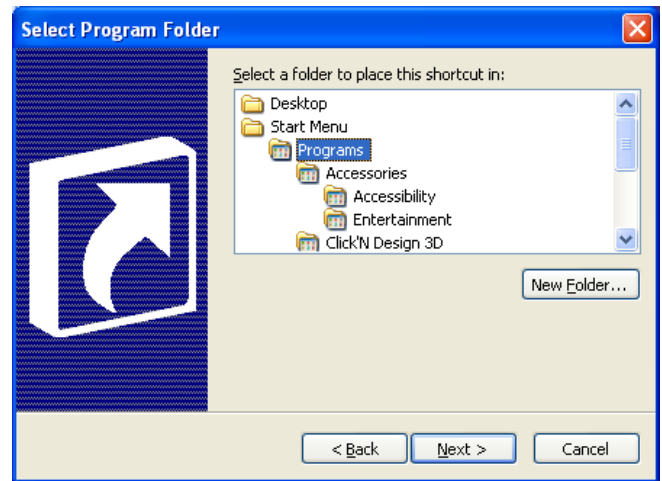
- Scroll the *system32* folder for *mshearts.exe*.
- Click **OK**.



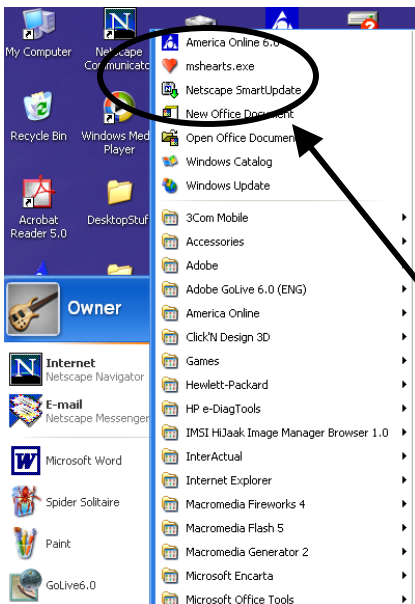
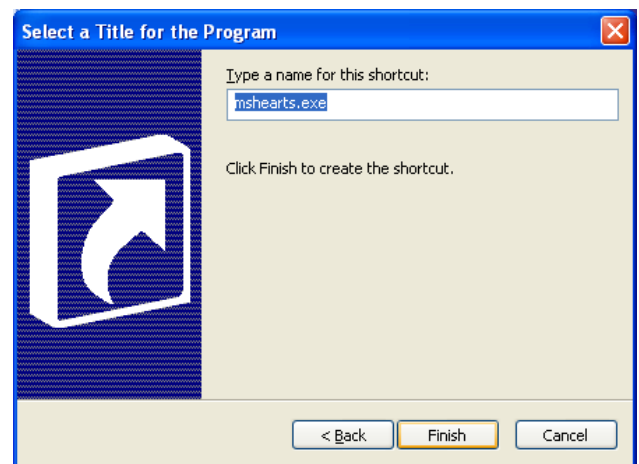
- This places the exact address to the executable file.
- Click **Next**.



- This screen allows you to specify where you want to have the program shortcut displayed on the Start Menu.
- Click **Start Menu**.
- Click **Next**.



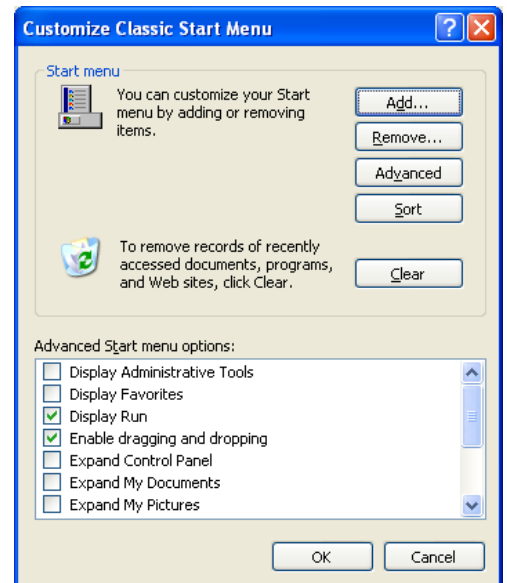
- Change the name of the shortcut to anything you like or leave it alone.
- Click **Finish**.



- If you choose Desktop in the Select Program Folder, you shortcut will appear on your desktop.
- Choosing the Start Menu will locate it above your program menu list as in the example to the left.
- The shortcut will be placed in whichever folder you choose or you can create a new folder in any location you want.

- Experiment by placing the mshearts.exe shortcut in the programs group.
- Create a new folder called Homework and place it in the Games folder and place the shortcut to mshearts.exe inside it.

- To remove the shortcuts and or folders, Right-click the taskbar. Click **Properties**.
- Click the Start Menu tab. Click **Classic Start Menu**.
- Click the **Remove...** button.



- Locate the files and or folders you want to remove. Click on the file or folder and click **Remove**. (Remember, you are only removing the shortcuts and not the actual program.)
- If you remove a folder, all the items in that folder are also removed.



## USER PROFILES AND USERS

- **User Profiles**
  - Used so two or more users can use same computer and maintain own customized settings.
  - User logs in - (if user profiles set up) restores computer settings that were in place when that user logged off.
  - Created in Control Panel.
  - On network.
    - Network administrator may have set up user profiles.
    - Network administrator determines how much customization (settings that can be changed) user can do.