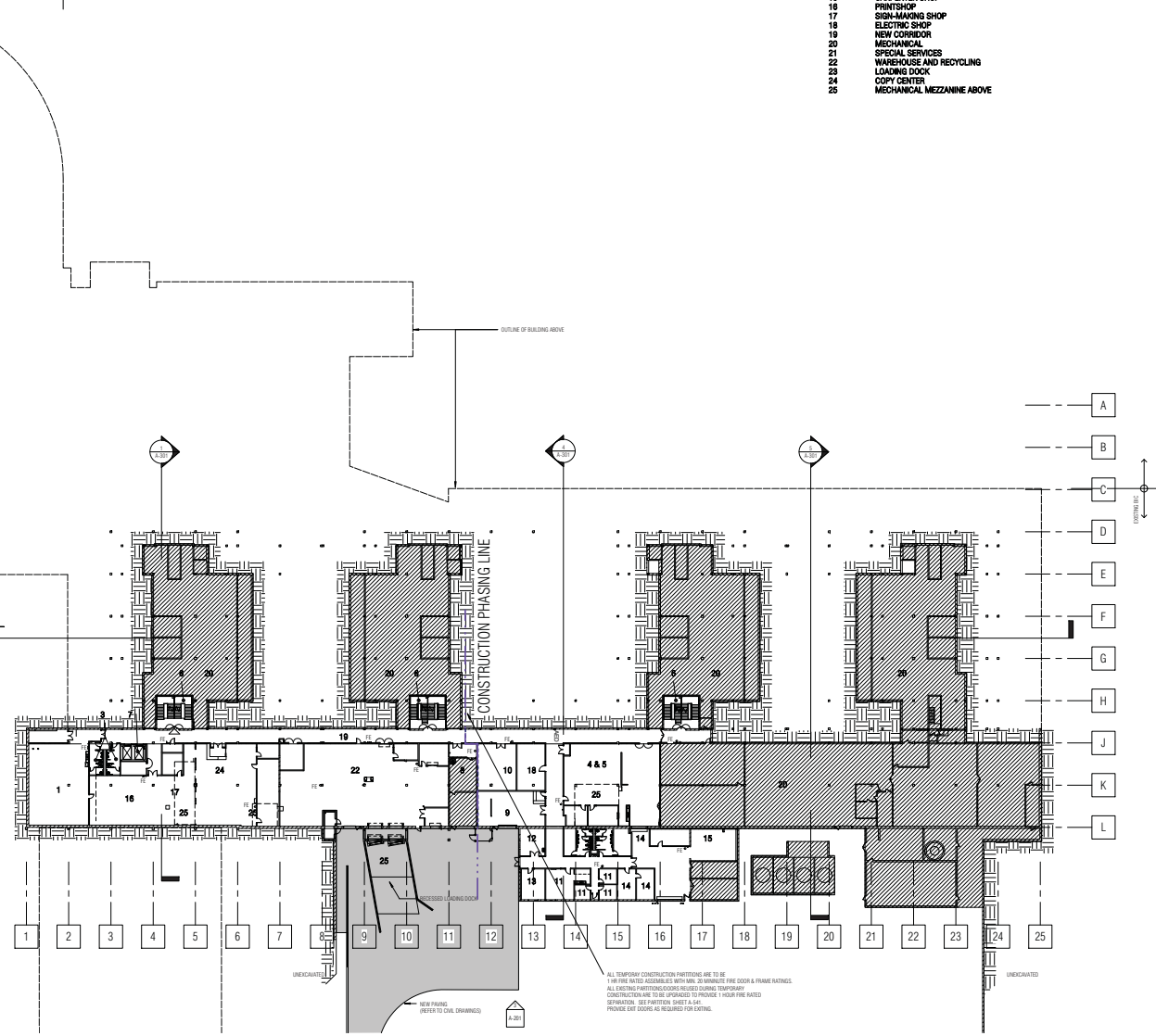


BIC & SRC RENOVATION & COLLEGE CENTER ADDITION
 COLLEGE OF DUPAGE
 425 FAWCETT BOULEVARD, GLEN ELYN, IL 60137

No.	Item	Date
1	DOCUMENT SET #1	07/2010
2	BILL OF MATERIALS	07/2010
3	CONTRACT SET #1	07/2010
4	CONTRACT SET #2	07/2010
5	CONTRACT SET #3	07/2010
6	CONTRACT SET #4	07/2010
7	CONTRACT SET #5	07/2010
8	CONTRACT SET #6	07/2010
9	CONTRACT SET #7	07/2010
10	CONTRACT SET #8	07/2010
11	CONTRACT SET #9	07/2010
12	CONTRACT SET #10	07/2010
13	CONTRACT SET #11	07/2010
14	CONTRACT SET #12	07/2010
15	CONTRACT SET #13	07/2010
16	CONTRACT SET #14	07/2010
17	CONTRACT SET #15	07/2010
18	CONTRACT SET #16	07/2010
19	CONTRACT SET #17	07/2010
20	CONTRACT SET #18	07/2010
21	CONTRACT SET #19	07/2010
22	CONTRACT SET #20	07/2010
23	CONTRACT SET #21	07/2010
24	CONTRACT SET #22	07/2010
25	CONTRACT SET #23	07/2010

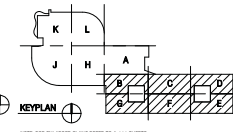
Drawn By: Author
 Check By: Checker
 Scale: AS NOTED
 Project No.: 07701-00
L1 - OVERALL BASEMENT 1 PLAN
 Sheet No.: A-101

- KEY LEGEND L1:**
- 1 GENERAL STORAGE
 - 2 NOT USED
 - 3 NEW TOILETS
 - 4 ARCHIVAL STORAGE
 - 5 IT STORAGE & STAGING
 - 6 BUILDING CORE
 - 7 NEW SERVICE ELEVATOR
 - 8 TRASH ROOM
 - 9 BUILDING TRADES STORAGE
 - 10 MAILROOM
 - 11 CUSTODIAL
 - 12 PAINT SHOP
 - 13 SIGN SHOP
 - 14 LOCKSMITH
 - 15 CARPENTER SHOP
 - 16 PRINTSHOP
 - 17 SIGN-MAKING SHOP
 - 18 ELECTRIC SHOP
 - 19 NEW CORRIDOR
 - 20 MECHANICAL
 - 21 SPECIAL SERVICES
 - 22 WAREHOUSE AND RECYCLING
 - 23 LOADING DOCK
 - 24 COPY CENTER
 - 25 MECHANICAL MEZZANINE ABOVE



ALL TEMPORARY CONSTRUCTION PARTITIONS ARE TO BE 1 HOUR FIRE RATED ASSEMBLIES WITH 1/2" MINIMUM Gypsum BOARD & FRAME RAILINGS.
 ALL EXISTING PARTITIONS ARE TO BE REMOVED DURING TEMPORARY CONSTRUCTION ARE TO BE UPGRADED TO PROVIDE 1 HOUR FIRE RATED SEPARATION. SEE EXISTING SHEET A-100.
 PROVIDE EXIT DOORS AS REQUIRED FOR EXITING.

L1 - OVERALL BASEMENT 1 PLAN
 1/8" = 1'-0"



NOTE: FOR ENLARGED PLANS REFER TO A-111 SHEETS

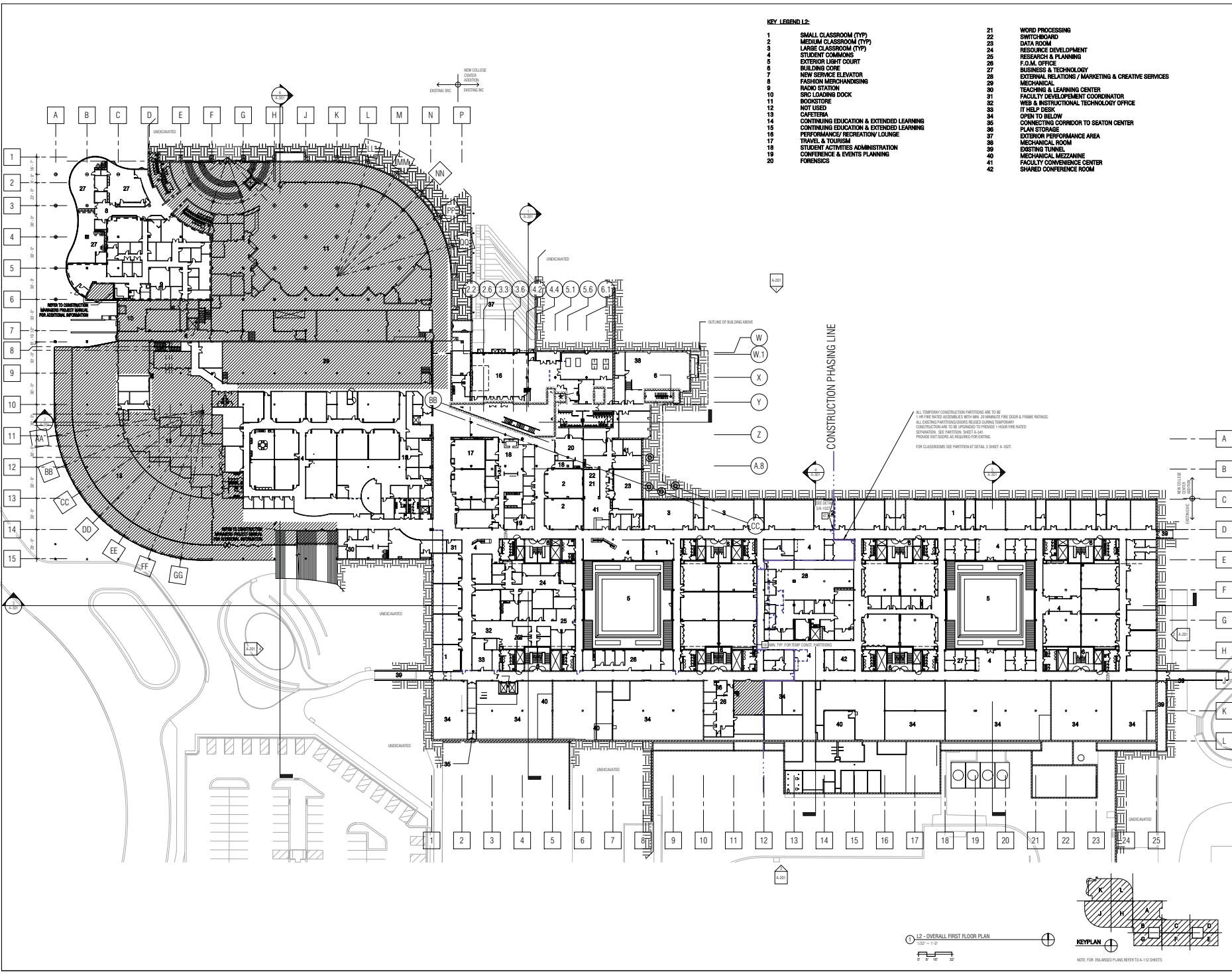
BIC & SRC RENOVATION & COLLEGE CENTER ADDITION
 COLLEGE OF DUPAGE
 425 FAWELL BOULEVARD, GLEN ELYN, IL 60137

NO.	DATE	DESCRIPTION	BY
1	08/14/13	ISSUED FOR PERMIT	LSH
2	08/14/13	ISSUED FOR PERMIT	LSH
3	08/14/13	ISSUED FOR PERMIT	LSH
4	08/14/13	ISSUED FOR PERMIT	LSH
5	08/14/13	ISSUED FOR PERMIT	LSH
6	08/14/13	ISSUED FOR PERMIT	LSH
7	08/14/13	ISSUED FOR PERMIT	LSH
8	08/14/13	ISSUED FOR PERMIT	LSH
9	08/14/13	ISSUED FOR PERMIT	LSH
10	08/14/13	ISSUED FOR PERMIT	LSH
11	08/14/13	ISSUED FOR PERMIT	LSH
12	08/14/13	ISSUED FOR PERMIT	LSH
13	08/14/13	ISSUED FOR PERMIT	LSH
14	08/14/13	ISSUED FOR PERMIT	LSH
15	08/14/13	ISSUED FOR PERMIT	LSH
16	08/14/13	ISSUED FOR PERMIT	LSH
17	08/14/13	ISSUED FOR PERMIT	LSH
18	08/14/13	ISSUED FOR PERMIT	LSH
19	08/14/13	ISSUED FOR PERMIT	LSH
20	08/14/13	ISSUED FOR PERMIT	LSH
21	08/14/13	ISSUED FOR PERMIT	LSH
22	08/14/13	ISSUED FOR PERMIT	LSH
23	08/14/13	ISSUED FOR PERMIT	LSH
24	08/14/13	ISSUED FOR PERMIT	LSH
25	08/14/13	ISSUED FOR PERMIT	LSH

Drawn By: Author
 Checked By: Checker
 Scale: AS NOTED
 Project No.: 07701-00
L2 - OVERALL FIRST FLOOR PLAN
 Sheet No.: A-102

KEY LEGEND:

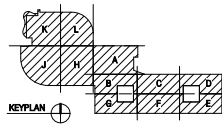
- | | | | |
|----|--|----|--|
| 1 | SMALL CLASSROOM (TYP) | 21 | WORD PROCESSING |
| 2 | MEDIUM CLASSROOM (TYP) | 22 | SWITCHBOARD |
| 3 | LARGE CLASSROOM (TYP) | 23 | DATA ROOM |
| 4 | STUDENT COMMONS | 24 | RESOURCE DEVELOPMENT |
| 5 | EXTERIOR LIGHT COURT | 25 | RESEARCH & PLANNING |
| 6 | BUILDING CORE | 26 | F.O.A. OFFICE |
| 7 | NEW SERVICE ELEVATOR | 27 | BUSINESS & TECHNOLOGY |
| 8 | FASHION MERCHANDISING | 28 | EXTERNAL RELATIONS / MARKETING & CREATIVE SERVICES |
| 9 | RADIO STATION | 29 | MECHANICAL |
| 10 | SIC LOADING DOCK | 30 | TEACHING & LEARNING CENTER |
| 11 | BOOKSTORE | 31 | FACILITY DEVELOPMENT COORDINATOR |
| 12 | NOT USED | 32 | WEB & INSTRUCTIONAL TECHNOLOGY OFFICE |
| 13 | CAFETERIA | 33 | IT HELP DESK |
| 14 | CONTINUING EDUCATION & EXTENDED LEARNING | 34 | OPEN TO BELOW |
| 15 | CONTINUING EDUCATION & EXTENDED LEARNING | 35 | CONNECTING CORRIDOR TO SEATON CENTER |
| 16 | PERFORMANCE / RECREATION LOUNGE | 36 | PLAN STORAGE |
| 17 | TRAVEL & TOURISM | 37 | EXTERIOR PERFORMANCE AREA |
| 18 | STUDENT ACTIVITIES ADMINISTRATION | 38 | MECHANICAL ROOM |
| 19 | CONFERENCE & EVENTS PLANNING | 39 | EXISTING TUNNEL |
| 20 | FORENSICS | 40 | MECHANICAL MEZZANINE |
| | | 41 | FACILITY CONFERENCE CENTER |
| | | 42 | SHARED CONFERENCE ROOM |



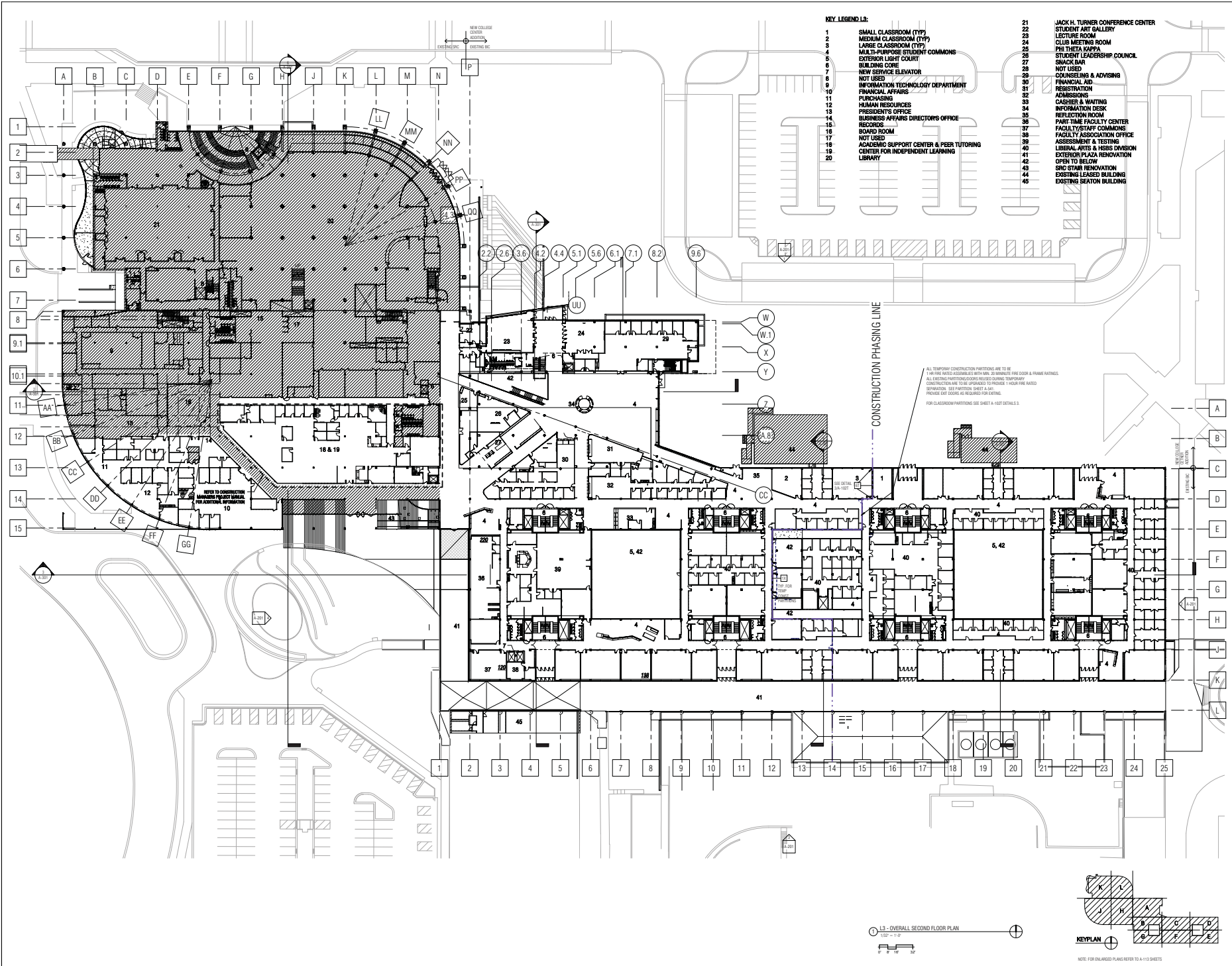
ALL TEMPORARY CONSTRUCTION PARTITIONS ARE TO BE 1 1/2\"/>

FOR CLASSROOMS SEE PARTITION DETAIL 9 SHEET A-102

L2 - OVERALL FIRST FLOOR PLAN



NOTE: FOR ENLARGED PLANS REFER TO A-112 SHEETS



KEY LEGEND:

- 1 SMALL CLASSROOM (TYP)
- 2 MEDIUM CLASSROOM (TYP)
- 3 LARGE CLASSROOM (TYP)
- 4 MULTI-PURPOSE STUDENT COMMONS
- 5 EXTERIOR LIGHT COURT
- 6 BUILDING CORE
- 7 NEW SERVICE ELEVATOR
- 8 NOT USED
- 9 INFORMATION TECHNOLOGY DEPARTMENT
- 10 FINANCIAL AFFAIRS
- 11 PURCHASING
- 12 HUMAN RESOURCES
- 13 PRESIDENT'S OFFICE
- 14 BUSINESS AFFAIRS DIRECTOR'S OFFICE
- 15 RECORDS OFFICE
- 16 BOARD ROOM
- 17 NOT USED
- 18 ACADEMIC SUPPORT CENTER & PEER TUTORING CENTER FOR INDEPENDENT LEARNING
- 19 LIBRARY
- 20

- 21 JACK H. TURNER CONFERENCE CENTER
- 22 STUDENT ART GALLERY
- 23 LECTURE ROOM
- 24 CLUB MEETING ROOM
- 25 PHI THETA KAPPA
- 26 STUDENT LEADERSHIP COUNCIL
- 27 SMOCK BAR
- 28 NOT USED
- 29 COUNSELING & ADVISING
- 30 FINANCIAL AID
- 31 REGISTRATION
- 32 ADMISSIONS
- 33 CASHIER & WAITING
- 34 INFORMATION DESK
- 35 REFLECTION ROOM
- 36 PART-TIME FACULTY CENTER
- 37 FACULTY/STAFF COMMONS
- 38 FACULTY ASSOCIATION OFFICE
- 39 ASSESSMENT & TESTING
- 40 LIBERAL ARTS & HSSB DIVISION
- 41 EXTERIOR PLAZA RENOVATION OPEN TO BELOW
- 42 SRC STAIR RENOVATION
- 43 EXISTING LEASED BUILDING
- 44 EXISTING SEATON BUILDING
- 45

ALL TEMPORARY CONSTRUCTION PARTITIONS ARE TO BE FIRE RATED ASSEMBLED WITH 10 MINUTE FIRE DOOR & FRAME RATINGS.
 ALL EXTERIOR PARTITIONS SHALL BE FIRE RATED TEMPORARY CONSTRUCTION ARE TO BE UPGRADED TO PROVIDE 1 HOUR FIRE RATED PARTITION. SEE PARTITION SHEET A-101.
 PROVIDE EXIT DOORS AS REQUIRED FOR EXITING.
 FOR CLASSROOM PARTITIONS SEE SHEET A-100 DETAILS.

CONSTRUCTION PHASING LINE

College of DuPage

Loebi Schlossman & Hackl
 ARCHITECTURE • PLANNING • INTERIORS

333 North Main Street
 Chicago, Illinois 60611
 312.557.8000
 www.loehibackl.com

CO CONTRACTOR
 ARCHITECT
 PLANNING
 INTERIORS

BIC & SRC RENOVATION & COLLEGE CENTER ADDITION

COLLEGE OF DUPAGE

425 FAWCETT BOULEVARD, GLEN ELLEN, IL 60137

NO.	DATE	DESCRIPTION	BY
1		DOCUMENTS CHECK #1	MS/MS
2		BVA CONTRACT DOCUMENTS	MS/MS
3		CONTRACT CHECK #1	MS/MS
4		VA CONTRACT DOCUMENTS	MS/MS
5		DOCUMENTS CHECK #1	MS/MS

Drawn By: Author
 Checked By: Checker
 Scale: AS NOTED
 Project No.: 87701-00

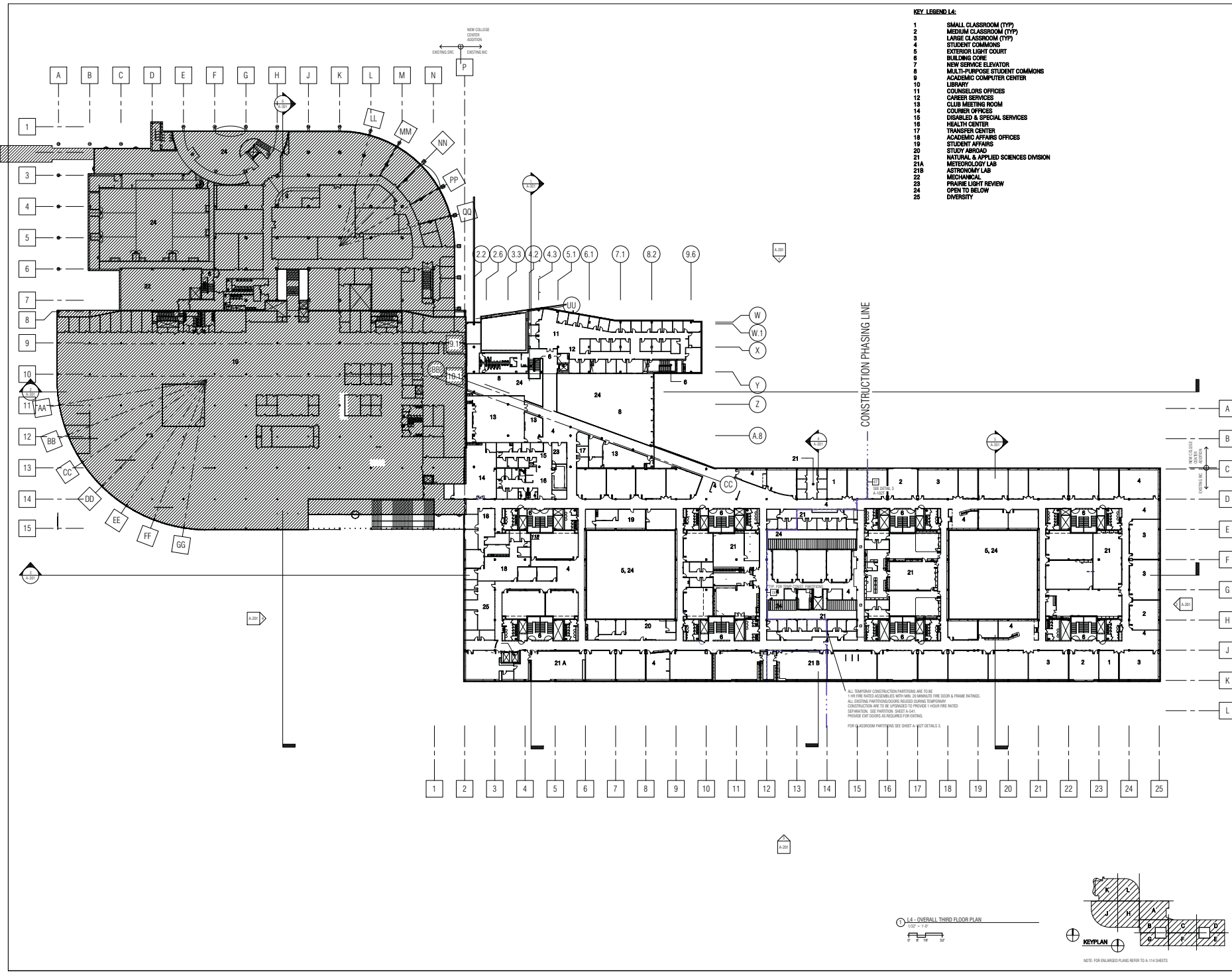
L3 - OVERALL SECOND FLOOR

Sheet No: **A-103**

No.	Rev.	Description	Date
1	1	DOCUMENT SET #1	10/15/10
2	1	BIC CONTRACT DOCUMENTS	10/15/10
3	1	CONTRACT SET #2	10/15/10
4	1	BIC CONTRACT DOCUMENTS	10/15/10
5	1	CONTRACT SET #3	10/15/10
6	1	BIC CONTRACT DOCUMENTS	10/15/10
7	1	CONTRACT SET #4	10/15/10
8	1	BIC CONTRACT DOCUMENTS	10/15/10
9	1	CONTRACT SET #5	10/15/10
10	1	BIC CONTRACT DOCUMENTS	10/15/10
11	1	CONTRACT SET #6	10/15/10
12	1	BIC CONTRACT DOCUMENTS	10/15/10
13	1	CONTRACT SET #7	10/15/10
14	1	BIC CONTRACT DOCUMENTS	10/15/10
15	1	CONTRACT SET #8	10/15/10
16	1	BIC CONTRACT DOCUMENTS	10/15/10
17	1	CONTRACT SET #9	10/15/10
18	1	BIC CONTRACT DOCUMENTS	10/15/10
19	1	CONTRACT SET #10	10/15/10
20	1	BIC CONTRACT DOCUMENTS	10/15/10
21	1	CONTRACT SET #11	10/15/10
22	1	BIC CONTRACT DOCUMENTS	10/15/10
23	1	CONTRACT SET #12	10/15/10
24	1	BIC CONTRACT DOCUMENTS	10/15/10
25	1	CONTRACT SET #13	10/15/10

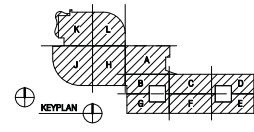
KEY LEGEND L4:

- 1 SMALL CLASSROOM (TYP)
- 2 MEDIUM CLASSROOM (TYP)
- 3 LARGE CLASSROOM (TYP)
- 4 STUDENT COMMONS
- 5 EXTERIOR LIGHT COURT
- 6 BUILDING CORE
- 7 NEW SERVICE ELEVATOR
- 8 MULTI-PURPOSE STUDENT COMMONS
- 9 ACADEMIC COMPUTER CENTER
- 10 LIBRARY
- 11 COUNSELORS OFFICES
- 12 CAREER SERVICES
- 13 CLUB MEETING ROOM
- 14 COURIER OFFICES
- 15 DISABLED & SPECIAL SERVICES
- 16 HEALTH CENTER
- 17 TRANSFER CENTER
- 18 ACADEMIC AFFAIRS OFFICES
- 19 STUDY AFFAIRS
- 20 STUDY ABROAD
- 21 NATURAL & APPLIED SCIENCES DIVISION
- 21A METEOROLOGY LAB
- 21B ASTRONOMY LAB
- 22 MECHANICAL
- 23 PRAIRIE LIGHT REVIEW
- 24 OPEN TO BELOW
- 25 DIVERSITY



ALL TEMPORARY CONSTRUCTION PARTITIONS ARE TO BE
 1. 1/2" MIN. Gypsum BOARD ON 2" X 4" STUDS
 2. 1/2" MIN. Gypsum BOARD ON 2" X 4" STUDS
 3. 1/2" MIN. Gypsum BOARD ON 2" X 4" STUDS
 4. 1/2" MIN. Gypsum BOARD ON 2" X 4" STUDS
 5. 1/2" MIN. Gypsum BOARD ON 2" X 4" STUDS
 6. 1/2" MIN. Gypsum BOARD ON 2" X 4" STUDS
 7. 1/2" MIN. Gypsum BOARD ON 2" X 4" STUDS
 8. 1/2" MIN. Gypsum BOARD ON 2" X 4" STUDS
 9. 1/2" MIN. Gypsum BOARD ON 2" X 4" STUDS
 10. 1/2" MIN. Gypsum BOARD ON 2" X 4" STUDS
 11. 1/2" MIN. Gypsum BOARD ON 2" X 4" STUDS
 12. 1/2" MIN. Gypsum BOARD ON 2" X 4" STUDS
 13. 1/2" MIN. Gypsum BOARD ON 2" X 4" STUDS
 14. 1/2" MIN. Gypsum BOARD ON 2" X 4" STUDS
 15. 1/2" MIN. Gypsum BOARD ON 2" X 4" STUDS
 16. 1/2" MIN. Gypsum BOARD ON 2" X 4" STUDS
 17. 1/2" MIN. Gypsum BOARD ON 2" X 4" STUDS
 18. 1/2" MIN. Gypsum BOARD ON 2" X 4" STUDS
 19. 1/2" MIN. Gypsum BOARD ON 2" X 4" STUDS
 20. 1/2" MIN. Gypsum BOARD ON 2" X 4" STUDS
 21. 1/2" MIN. Gypsum BOARD ON 2" X 4" STUDS
 22. 1/2" MIN. Gypsum BOARD ON 2" X 4" STUDS
 23. 1/2" MIN. Gypsum BOARD ON 2" X 4" STUDS
 24. 1/2" MIN. Gypsum BOARD ON 2" X 4" STUDS
 25. 1/2" MIN. Gypsum BOARD ON 2" X 4" STUDS

L4 - OVERALL THIRD FLOOR PLAN
 1/2" = 1'-0"



NOTE: FOR ENLARGED PLANS REFER TO A-114 SHEETS.