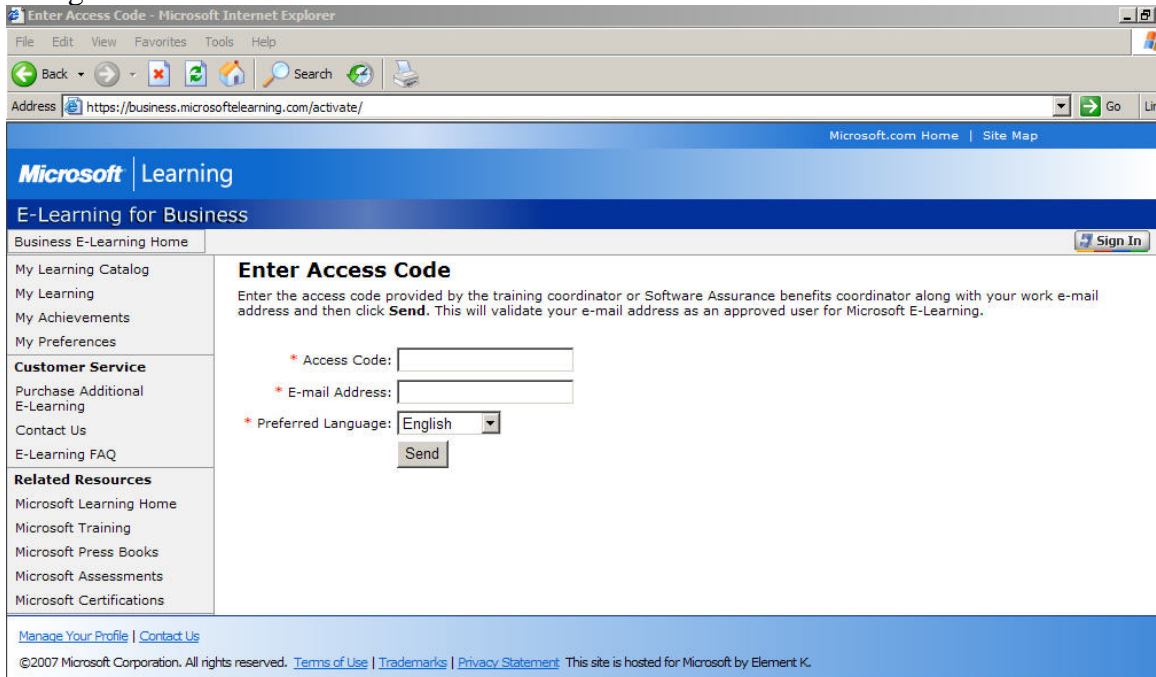


Instructions for Windows Live ID

If you do not have a Windows Live ID (formerly called Windows Passport) you will need to create one. Access <https://business.microsoftlearning.com/activate>, you should see the following screen. Enter the Access code given to you in your introduction letter and your college email address and click Send.

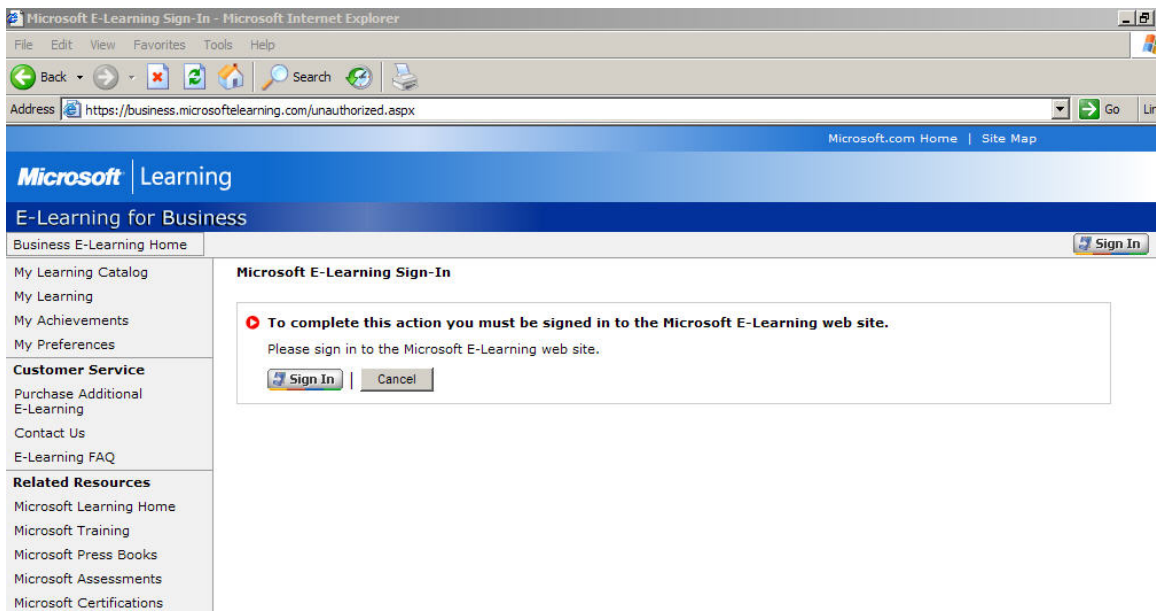


The screenshot shows a Microsoft Internet Explorer browser window displaying the 'Enter Access Code' page on the Microsoft Learning website. The address bar shows the URL <https://business.microsoftlearning.com/activate/>. The page header includes the Microsoft Learning logo and navigation links for 'Microsoft.com Home' and 'Site Map'. The main content area is titled 'Enter Access Code' and contains a form with the following fields:

- * Access Code:
- * E-mail Address:
- * Preferred Language:

A 'Send' button is located below the form. The left sidebar contains a navigation menu with categories like 'My Learning Catalog', 'Customer Service', and 'Related Resources'. The footer includes copyright information for 2007 Microsoft Corporation and links to 'Terms of Use', 'Trademarks', and 'Privacy Statement'.

At this screen click the Sign in button

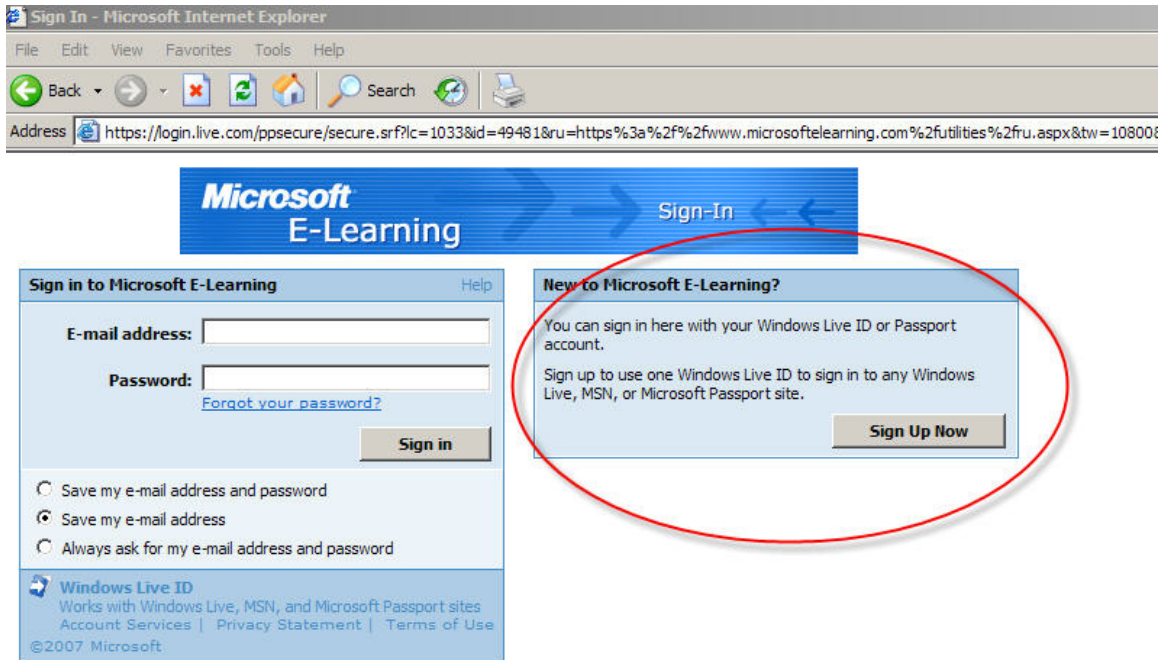


The screenshot shows a Microsoft Internet Explorer browser window displaying the 'Microsoft E-Learning Sign-In' page on the Microsoft Learning website. The address bar shows the URL <https://business.microsoftlearning.com/unauthorized.aspx>. The page header includes the Microsoft Learning logo and navigation links for 'Microsoft.com Home' and 'Site Map'. The main content area is titled 'Microsoft E-Learning Sign-In' and contains a message box with the following text:

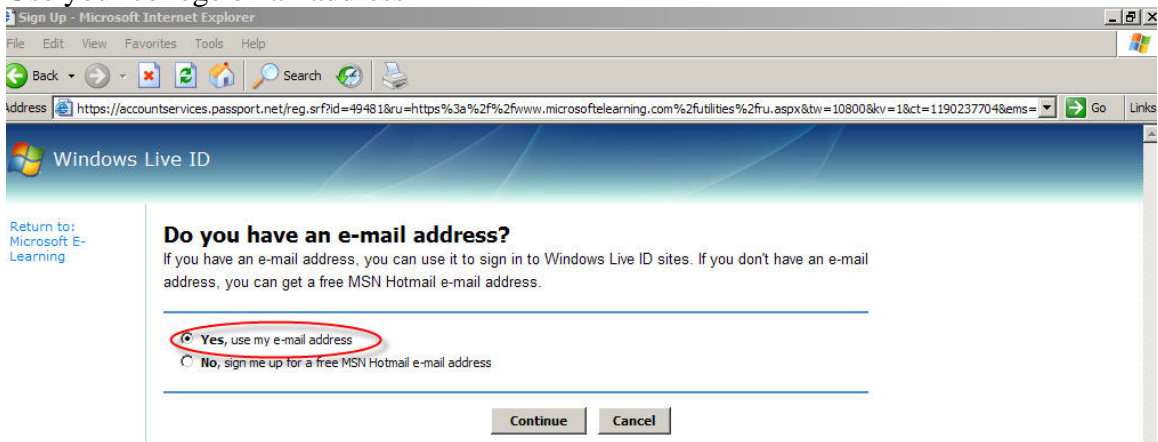
To complete this action you must be signed in to the Microsoft E-Learning web site.
Please sign in to the Microsoft E-Learning web site.

Below the message box are two buttons: 'Sign In' and 'Cancel'. The left sidebar contains a navigation menu with categories like 'My Learning Catalog', 'Customer Service', and 'Related Resources'. The footer includes copyright information for 2007 Microsoft Corporation and links to 'Terms of Use', 'Trademarks', and 'Privacy Statement'.

You will be redirected to the Microsoft E-Learning sign in page. Select Sign Up Now.



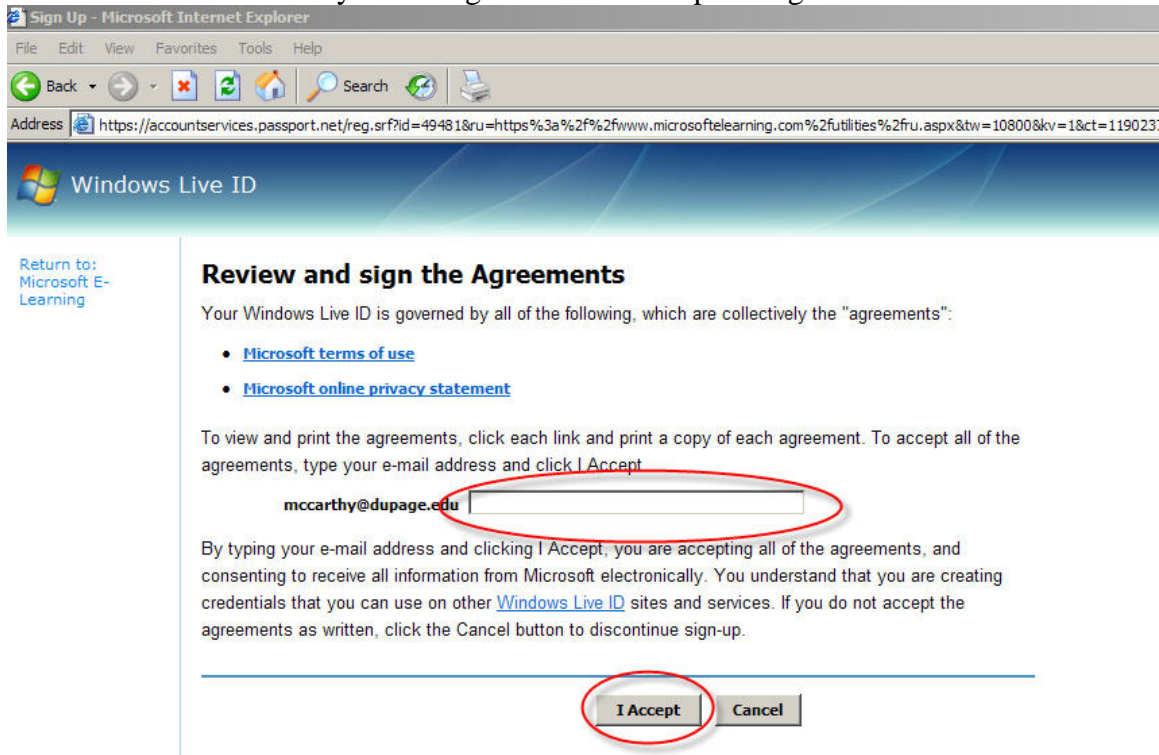
Use your college email address



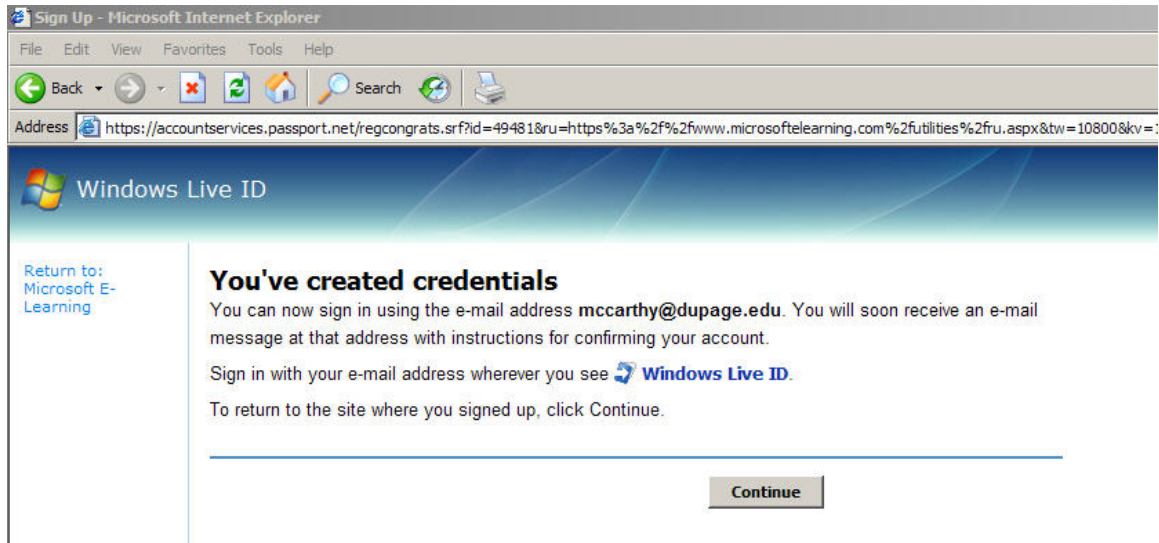
Fill out the information to create your credentials



You will need to re-enter your college email and accept the agreement



Click on continue



Follow the instructions to open your email and click on the validation.

Validate Email Address - Microsoft Internet Explorer
 Address: https://business.microsoftlearning.com/activate/default.aspx

Microsoft Learning
 E-Learning for Business

Business E-Learning Home Sign Out

Your access code redemption request was received and an e-mail validation message has been sent to the e-mail address you supplied on the Enter Access Code page. To continue with the Access Code redemption process, you must take the following action.

1. Go to your inbox and open the email validation message.
2. Click on the email validation link within the body of the message.

Note: if you are no longer signed into Windows Live ID, then you will be prompted to sign in before continuing.

My Learning Catalog
 My Learning
 My Achievements
 My Preferences

Customer Service
 Purchase Additional E-Learning
 Contact Us
 E-Learning FAQ

Related Resources
 Microsoft Learning Home
 Microsoft Training
 Microsoft Press Books
 Microsoft Assessments
 Microsoft Certifications

Manage Your Profile | Contact Us
 ©2007 Microsoft Corporation. All rights reserved. [Terms of Use](#) | [Trademarks](#) | [Privacy Statement](#) This site is hosted for Microsoft by Element K.

After you **confirm** your Windows Live ID open the **ACTION REQUESTED** email and select the link to Microsoft E-Learning.

From	Subject	Received
2 Microsoft E-Learning	ACTION REQUESTED: Microsoft E-Learning email access conf...	Wed 9/19/2007 4:44 PM
1 Microsoft Customer Support	Confirm your e-mail address for Windows Live ID	Wed 9/19/2007 4:43 PM
Windows Live ID	Welcome to Windows Live ID	Wed 9/19/2007 4:43 PM

Open My Learning Catalog and select the courses you wish to complete.

Microsoft Learning
 E-Learning for Business

Business E-Learning Home Sign Out

Thank You
 Your Access Code has been accepted and you now have access to the offer listed below.

E-Learning	Expiration Date
Official Microsoft E-Learning for Software Assurance - Systems (English)	2008-10-31

Go to [My Learning Catalog](#) to see your online content.

My Learning Catalog
 My Learning
 My Achievements
 My Preferences

Customer Service
 Purchase Additional E-Learning
 Contact Us
 E-Learning FAQ

Related Resources
 Microsoft Learning Home
 Microsoft Training
 Microsoft Press Books
 Microsoft Assessments
 Microsoft Certifications

My Learning Catalog

Use the search below to find specific E-Learning courses or sort by the column headings by clicking on the column header. Select the Course Name to see a description of the course and to add it to [My Learning](#).

Search:

Select the courses you wish to complete.

es) and "Add to My Learning" to add course(s) to your [My Learning](#) page. 1-15 (of 15)

<input type="checkbox"/>	Course Name	Language	Audience
<input type="checkbox"/>	Course 4114: Doing More with Microsoft® Windows® SharePoint® Services	English	Information Worker
<input type="checkbox"/>	Course 4115: Getting Started with Microsoft® Windows® SharePoint® Services	English	Information Worker
<input type="checkbox"/>	Course 4119: Core Training for Microsoft® Windows® XP Professional Service Pack 2	English	Information Worker
<input type="checkbox"/>	Course 4120: Core Training for Microsoft® Windows® XP Professional	English	IT Professional
<input type="checkbox"/>	Course 5407: Getting Started with Windows Vista	English	IT Professional
<input type="checkbox"/>	Course 5408: Working Efficiently in Windows Vista	English	IT Professional
<input type="checkbox"/>	Course 5409: Working with Folders and Files in Windows Vista	English	IT Professional
<input type="checkbox"/>	Course 5410: Personalizing Windows Vista	English	IT Professional
<input type="checkbox"/>	Course 5411: Installing and Configuring Devices in Windows Vista	English	IT Professional
<input type="checkbox"/>	Course 5412: Using Windows Internet Explorer in Windows Vista	English	IT Professional
<input type="checkbox"/>	Course 5413: Working with Programs in Windows Vista	English	IT Professional

All of your selected courses can be accessed from the My Learning link in the left pane.

Microsoft.com Home | Site Map

Microsoft Learning

E-Learning for Business

Business E-Learning Home

<ul style="list-style-type: none">My Learning CatalogMy LearningMy AchievementsMy PreferencesCustomer ServicePurchase Additional E-LearningContact UsE-Learning FAQRelated ResourcesMicrosoft Learning HomeMicrosoft TrainingMicrosoft Press BooksMicrosoft AssessmentsMicrosoft Certifications	<h3>Thank You</h3> <p>Your Access Code has been accepted and you now have access to the offer listed below.</p> <table border="1"><thead><tr><th>E-Learning</th><th>Expiration Date</th></tr></thead><tbody><tr><td>Official Microsoft E-Learning for Software Assurance - Systems (English)</td><td>2008-10-31</td></tr></tbody></table> <p>Go to My Learning Catalog to see your online content.</p>	E-Learning	Expiration Date	Official Microsoft E-Learning for Software Assurance - Systems (English)	2008-10-31
E-Learning	Expiration Date				
Official Microsoft E-Learning for Software Assurance - Systems (English)	2008-10-31				